

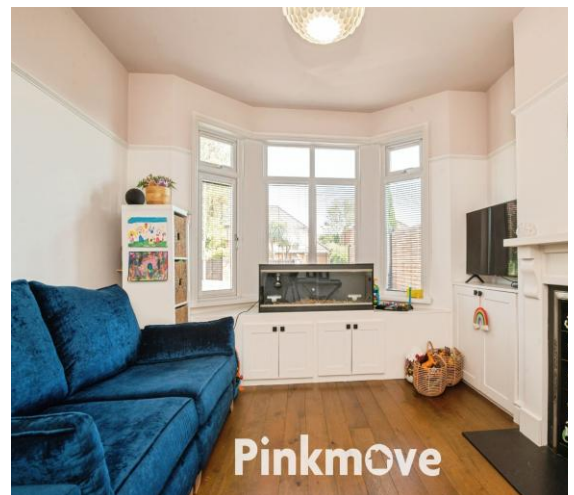


Pinkmove

Catsash Road

Offers in the region of £575,000

- Elegant bay-fronted lounge plus second reception room
- Contemporary kitchen with central island, skylights and integrated appliances
- Utility room, downstairs WC and internal garage access
- Four well-proportioned bedrooms
- Principal bedroom with stylish en-suite
- Landscaped garden with terrace and versatile garden bar/outbuilding
- EPC Rating: C



4 2 2

Pinkmove

01633 746088
team@pinkmove.co.uk



About the property

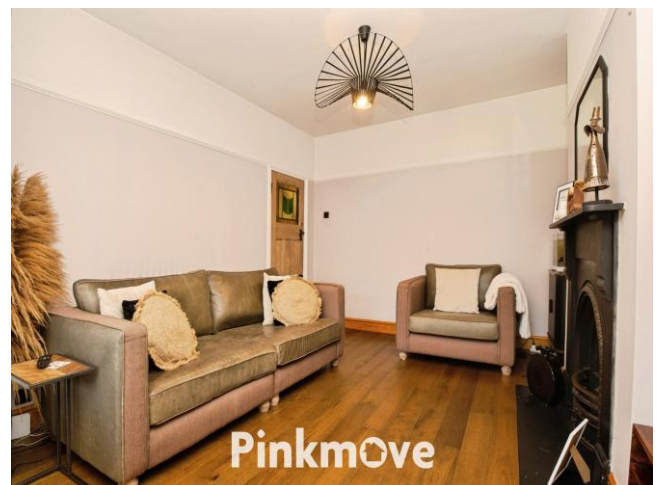
To the front of the property is an elegant bay-fronted lounge showcasing attractive period features, complemented by a second reception room that offers versatile space for family living or entertaining.

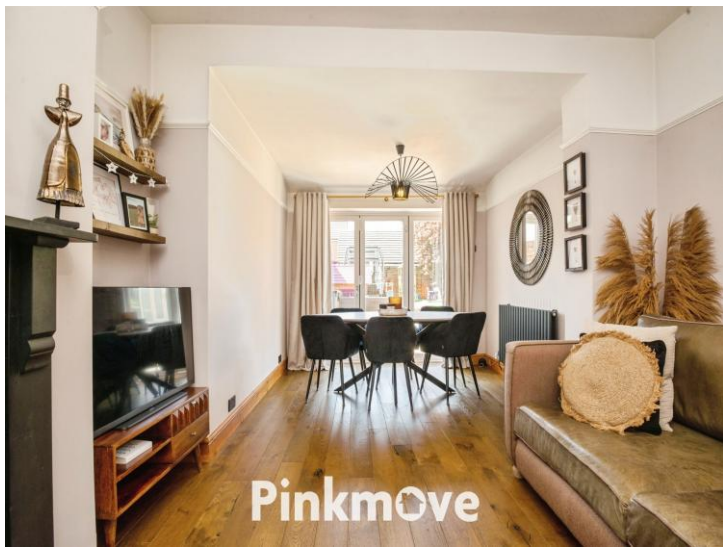
To the rear, the property features an impressive contemporary kitchen, fitted with sleek cabinetry, integrated appliances and a central island providing additional seating. Skylights flood the space with natural light, creating a bright and functional environment ideal for modern living.

The property also benefits from a separate rear living/dining room with garden views and bi-fold doors opening onto the patio, creating an excellent indoor-outdoor entertaining space while maintaining defined living areas.

Further ground floor benefits include a separate utility room, a downstairs WC and convenient internal access to the garage. Upstairs, the home offers four well-proportioned bedrooms, including a generous principal bedroom with a stylish en-suite shower room. The remaining bedrooms are served by a luxurious family bathroom, featuring a striking freestanding bath and contemporary finishes.

Externally, the beautifully landscaped rear garden has been designed with entertaining in mind, boasting a large paved terrace, raised planters and an impressive garden bar/outbuilding. This versatile space is ideal for social gatherings, a home gym or a home office, while offering privacy and practicality for family life.





Accommodation

Lounge

Living Room

Kitchen

Utility

Wc

Garage

Bedroom 1

En-Suite

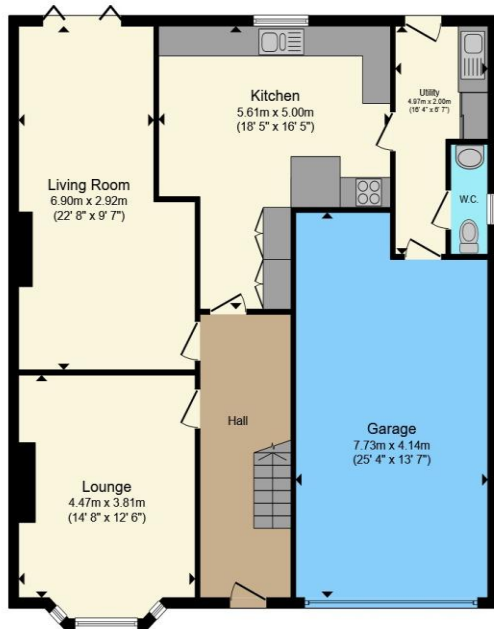
Bedroom 2

Bedroom 3

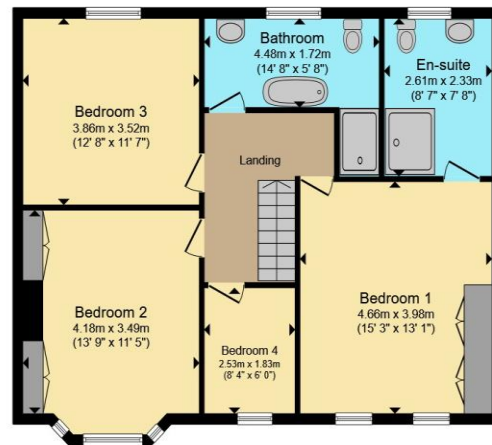
Bedroom 4

Bathroom

Floorplan



Ground Floor



First Floor

Total floor area 198.1 sq.m. (2,132 sq.ft.) approx

This floor plan is for illustrative purposes only. It is not drawn to scale. Any measurements, floor areas (including any total floor area), openings and orientation are approximate. No details are guaranteed, they cannot be relied upon for any purpose and they do not form part of any agreement. No liability is taken for any error, omission or misstatement. A party must rely upon its own inspection(s). Powered by www.localagent.com

Important Information

Note while we endeavour to make our sales details accurate and reliable, if there is any point which is of particular interest to you, please contact the office and we will be pleased to confirm the position for you. We have not personally tested any apparatus, equipment, fixtures, fittings or services and cannot verify they are in working order or fit for their purposes. Nothing in these particulars is intended to indicate that carpets or curtains, furnishings or fittings, electrical goods (whether wired or not). Gas fires or light fittings or any other fixtures not expressly included form part of the property offered for sale. This computer generated Floorplan, if applicable, is intended as a general guide to the layout and design of the property. It is not to scale and should not be relied upon for dimensions. Tenure: We cannot confirm the tenure of the property as we have not had access to the legal documents. The buyer is advised to obtain verification from their solicitor or surveyor.

Peter Alan Limited is registered in England and Wales under company number 2073153, Registered Office is Cumbria House, 16-20 Hockliffe Street, Leighton Buzzard, Bedfordshire, LU7 1GN. VAT Registration Number is 500 2481 05. For activities relating to regulated mortgages and non-investment insurance contracts, Peter Alan Limited is an appointed representative of Connells Limited which is authorised and regulated by the Financial Conduct Authority. Connells Limited's Financial Services Register number is 302221. Most buy-to-let

