



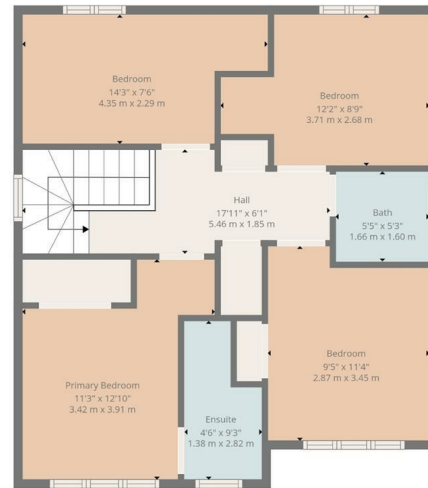
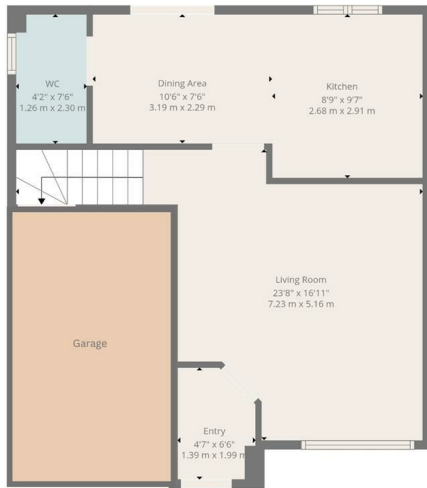
HEMMINGS HOMES

OFFERS OVER

£290,000

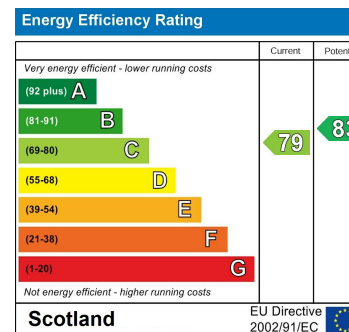
Harrowslaw Drive

Hamilton, ML3 8SL



TOTAL: 1090 sq. ft, 102 m2
 Ground floor: 470 sq. ft, 44 m2, 1st floor: 620 sq. ft, 58 m2
 EXCLUDED AREAS: WALLS: 103 sq. ft, 8 m2

Floor Plan Created By Cubicasa App. Measurements Deemed Highly Reliable But Not Guaranteed.



Agents Note: Whilst every care has been taken to prepare these particulars, they are for guidance purposes only. All measurements are approximate and are for general guidance purposes only and whilst every care has been taken to ensure their accuracy, they should not be relied upon and potential buyers/tenants are advised to recheck the measurements



OFFICE ADDRESS
 376 Brandon Street
 Motherwell
 North Lanarkshire
 ML1 1XA

OFFICE DETAILS
 01698 263413
enquiries@hemmingshomes.co.uk
hemmingshomes.co.uk