



Shrubbery Road, SW16
£575,000

Dexters



Shrubbery Road, SW16

This split level maisonette offers generous living space extending to over 1,190 sq ft, perfectly designed for comfortable modern living. Boasting three well proportioned bedrooms, the property provides ample space for families, professionals, or those seeking flexible accommodation. The home features two bathrooms, separate kitchen and a private garden with the added benefit of split-level character and charm.

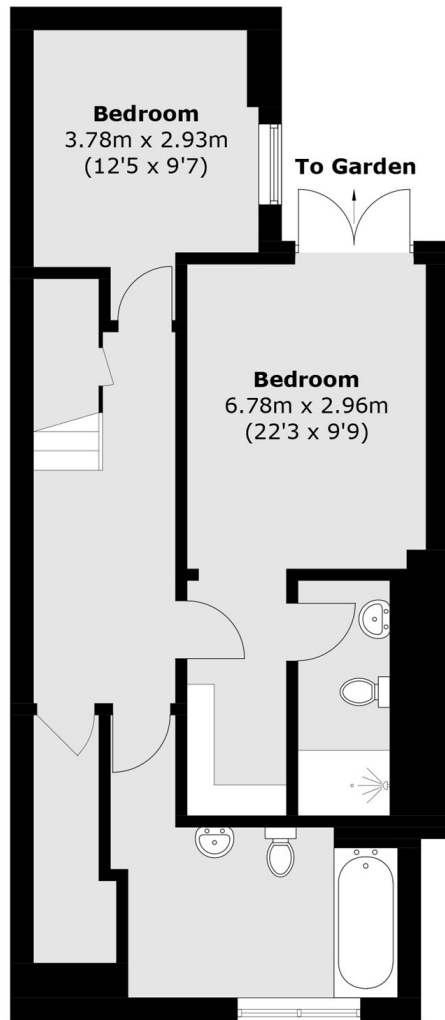
Ideally located just off Streatham High Road, Shrubbery Road offers excellent access to a wide range of local amenities, including shops, cafés, and transport links. The expansive open spaces of Tooting Common and Streatham Common are also nearby, providing the perfect setting for leisure, recreation, and outdoor enjoyment.

Features

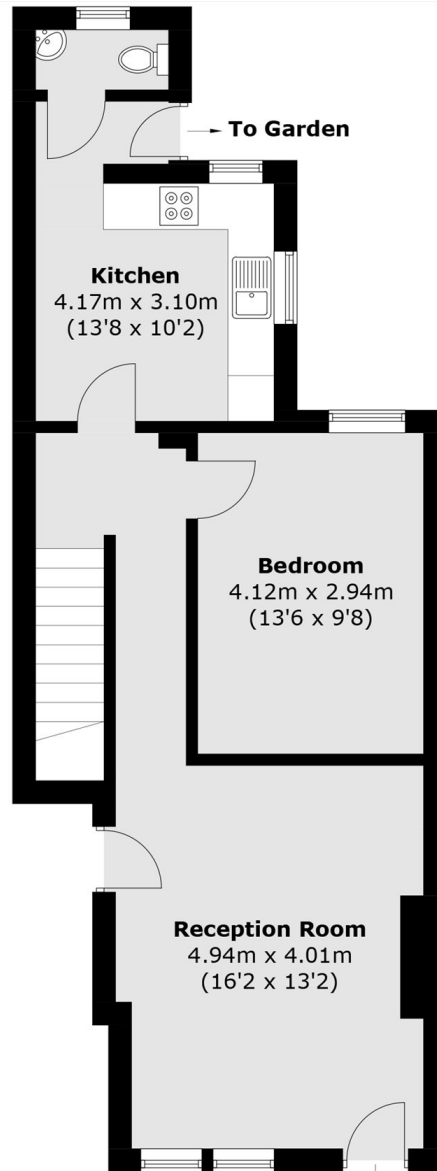
- Three Double Bedrooms
- Private Garden
- Over 1,190 Sq Ft
- Two Bathrooms
- Own Front Door
- Split Level



Shrubbery Road,
LONDON, SW16



Basement



Ground Floor

Total area (approx.): 110.6 sq. m (1,190.5 sq. ft)