

ROSEWICK

R E S I D E N T I A L



Summersgill Square, Horsforth, LS18

Estate and Letting Agents | Residential Spatial Advisors | Property Management

Office: 1 Elizabeth Court Collingham Leeds LS22 5JL

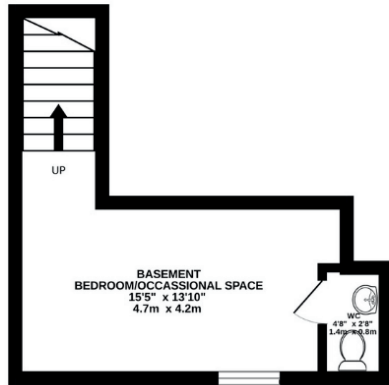
Collingham: 01937 326 032 | Leeds: 0113 873 0737 | Email: hello@rosewickresidential.co.uk

Web: rosewickresidential.co.uk

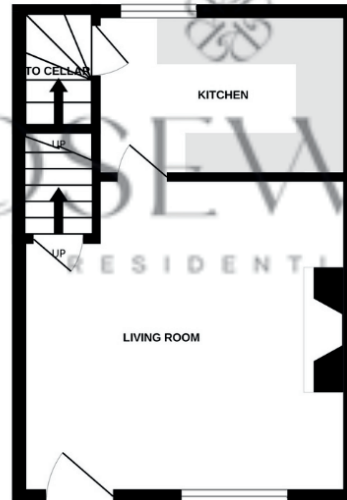




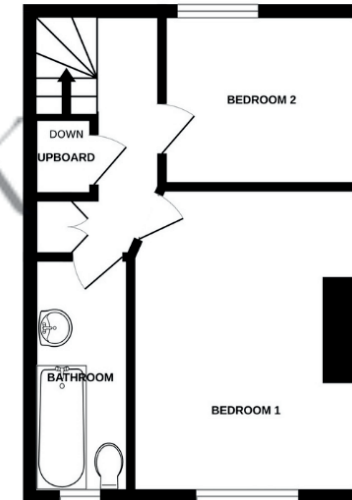
BASEMENT
139 sq.ft. (12.9 sq.m.) approx.



GROUND FLOOR
273 sq.ft. (25.4 sq.m.) approx.



1ST FLOOR
276 sq.ft. (25.6 sq.m.) approx.



Approximate Area:
687 sq.ft
63.9 sq.m

All measurements, doors, windows, rooms and items shown are approximate. No responsibility is taken for errors, omissions or mis-statements. Plans are for illustrative purposes only and should not be relied upon as fact. Services, systems and appliances have not been tested and no guarantee of operability or efficiency is given.

Made with Metropix ©2025