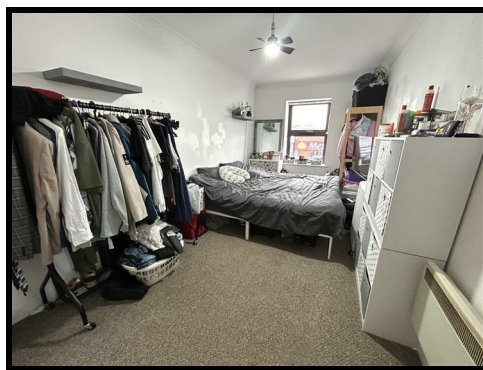


COUNTRYSIDE

ESTATES



Flat 2, Knights Court Foksville Road, Canvey Island, SS8 7GF

£1,000 PCM

TO LET - A large two bedroom apartment situated in central Canvey within walking distance to the High Street shopping facilities and local amenities. Offering spacious accommodation to include a lounge, two generous size bedrooms, kitchen and three piece bathroom suite. Plus allocated parking!

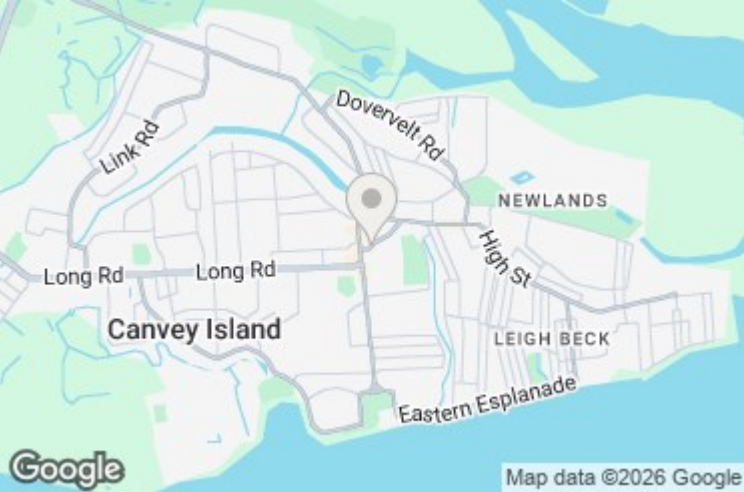
Flat 2, Knights Court Foksville Road, Canvey Island, SS8 7GF

Large First Floor Apartment /
Fantastic Town Centre Location /
Lounge 11'11 x 18'06 /
Modern Kitchen 7'02 x 9'04 /
Bedroom One 18'05 x 8'06 /
Bedroom Two 14'08 x 8'11 /
Three Piece Bathroom Suite 7'03 x 8'11 /
Allocated Parking /
Secure Phone Entry System /

EPC Band C / Council Tax Band A / Referencing Required /
Available From March /

Energy Efficiency Rating		
	Current	Potential
Very energy efficient - lower running costs		
(92 plus) A		
(81-91) B		
(69-80) C		
(55-68) D		
(39-54) E		
(21-38) F		
(1-20) G		
Not energy efficient - higher running costs		
England & Wales		EU Directive 2002/91/EC

Environmental Impact (CO ₂) Rating		
	Current	Potential
Very environmentally friendly - lower CO2 emissions		
(92 plus) A		
(81-91) B		
(69-80) C		
(55-68) D		
(39-54) E		
(21-38) F		
(1-20) G		
Not environmentally friendly - higher CO2 emissions		
England & Wales		EU Directive 2002/91/EC



205 High Road, Benfleet, SS7 5HY | 01268 755555 | sales@countrysideestates.co.uk | www.countrysideestates.co.uk



COUNTRYSIDE ESTATES (SALES) LTD | COMPANY No.: 11867260 (England)
REGISTERED ADDRESS: Matrix House 12-16 Lionel Road, Canvey Island, England, SS8 9DE | VAT No.: 332342143