



## ST. PAULS MEWS, NW1

£1,500,000

Freehold  
Gated Street  
Off Street Parking  
Newly Renovated  
Four Bedrooms  
Three Bathrooms

@marshandparsons  
marshandparsons.co.uk

MARSH &  
PARSONS



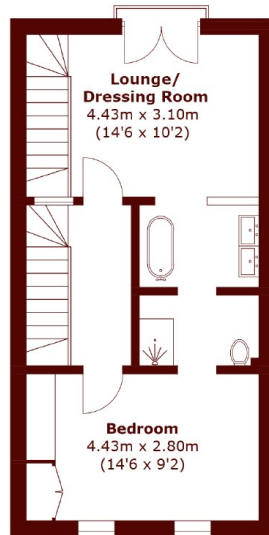
# ABOUT THE PROPERTY

Architecturally Refined Freehold Home with Unrivalled Space and Immediate Access to the King's Cross Global Hub. Tucked away within the secure, gated environs of St. Paul's Mews, this residence is not merely a house; it is a meticulously re-imagined, high-specification sanctuary that delivers a central London lifestyle without compromise.

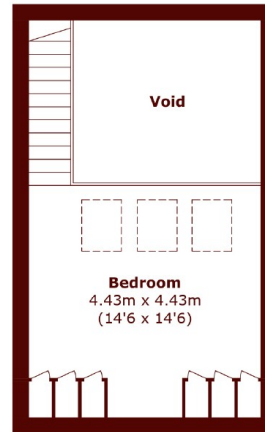
This four-bedroom, three-bathroom freehold home spans over 1,500 sq ft, offering a scale and the invaluable inclusion of private off-street parking that is virtually unrivalled at this central NW1 price point. Rebuilt to an exceptional standard, the property is defined by bespoke luxury, towering ceiling heights, and a flood of natural



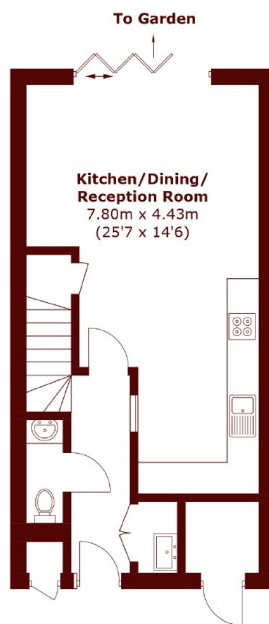
# STEP INSIDE ST. PAULS MEWS



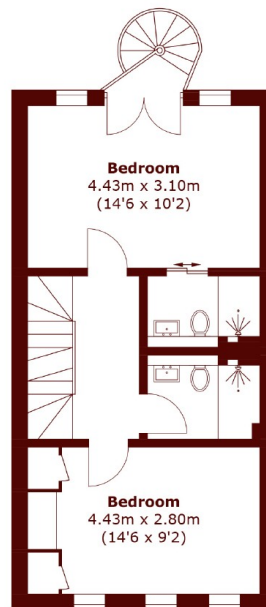
**Second Floor**



**Mezzanine**



**Ground Floor**



**First Floor**

Total area (approx.): 143.5 sq. m (1,544.5 sq. ft)  
(Including Mezzanine / Excluding Void)  
External Storage : 2.5 sq. m (26.9 sq. ft)

**Camden**  
020 7244 2200

Energy Rating: C We aim to make our particulars both accurate and reliable. However, they are not guaranteed; nor do they form part of an offer or contract. If you require clarification on any points then please contact us, especially if you're traveling some distance to view. Please note that appliances and heating systems have not been tested and therefore no warranties can be given as to their good working order

**MARSH &  
PARSONS**