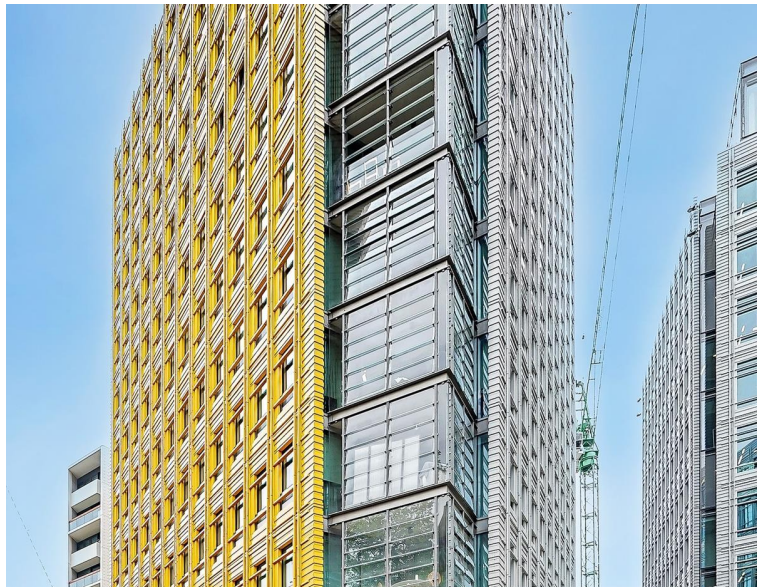




**Central St. Giles Piazza, London WC2H**  
Price £2,491 per month - Furnished





## Description

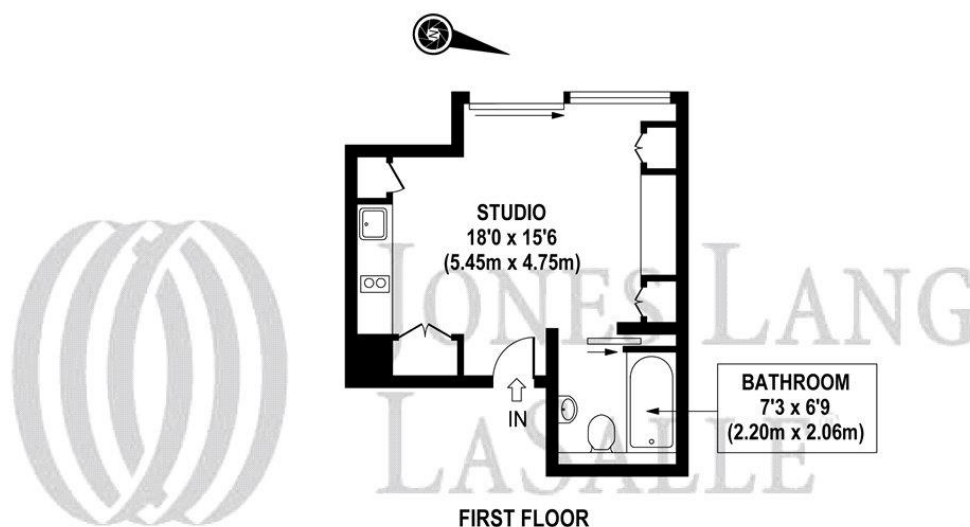
A stylish and bright studio apartment in this award winning development with 24 hour concierge, located at the newest Piazza of WC2, and ideally located for Covent Garden, Shaftesbury Avenue and Bloomsbury.

Council tax band: D. Rent is payable on a monthly basis and you may be required to pay more than a month's rent in advance, depending on your circumstances. You will be required to pay a 1 week holding deposit following a successful offer. Tenancies with annual rents up to £50,000 will require a 5 weeks' security deposit, while those exceeding this threshold will require a 6 weeks' deposit. Utility bills, council tax, telephone line and broadband are not included in the rent. As well as paying the rent, you may also be required to make some additional permitted payments. If your tenancy does not qualify as an AST, additional fees may apply. Please visit [jll.co.uk/fees](http://jll.co.uk/fees) for details of fees that may be payable when renting a property. To check broadband and mobile phone coverage please visit Ofcom here [ofcom.org.uk/phones-telecoms-and-internet/advice-for-consumers/advice/ofcom-checker](http://ofcom.org.uk/phones-telecoms-and-internet/advice-for-consumers/advice/ofcom-checker)

- Open plan kitchen with studio room
  - Bathroom
  - First Floor
  - Furnished
  - Interior Designed
  - Contemporary Interiors
  - 24 hour Concierge
  - Lift
  - Close to Covent Garden
  - Centrally Located
-

# Floorplan

277 sq ft | 26 sq m



APPROX. GROSS INTERNAL AREA 277 sq.ft / 25.80 sq.m

Floorplan is for illustrative purposes only and is not to scale. Every attempt has been made to ensure the accuracy of the floorplan shown. However all measurements, fixtures, fittings and data shown are an approximate interpretation for illustrative purposes only. Liability for errors, omissions or mis-statement through negligence or otherwise is hereby excluded.

CP | CREATIVE  
Property Marketing

Mayfair and Marylebone  
St George Street,  
London W1S 2FQ  
+44 207 399 5550  
mayfair@jll.com

*Urban living, your way.*

[jll.co.uk/residential](http://jll.co.uk/residential)

© 2019 Jones Lang LaSalle IP, Inc. All rights reserved. All information contained herein is from sources deemed reliable; however, no representation or warranty is made to the accuracy thereof.

