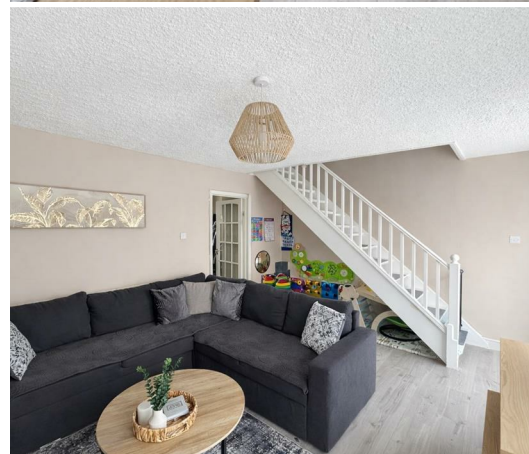


HUNTERS®

HERE TO GET *you* THERE



Armeston , Sheephouse Way, KT3

£1,700 Per Calendar Month

- Two Double Bedroom Maisonette
- Large Newly Fitted Kitchen
- Close to Local Amenities
- Split Level
- Family Bathroom
- Close to Malden Manor Station
- Wood Floors
- Unfurnished
- Available Mid March



Council Tax: C Tenure: