



JONES POTTS TAYLOR



35 Samuel Street

Atherton, Manchester, M46 9AY

£875

JonesPottsTaylor are delighted to offer TO LET this two bedroom, pavement fronted, mid-terrace property. Situated in a popular residential location in Hindsford, Atherton, close to transport and network links, schools, shops and amenities. The property briefly comprises of; entrance hallway, downstairs W/C,, living room and kitchen / dining room. To the first floor are two well-proportioned double bedrooms, one benefitting from fitted wardrobes a further family bathroom and separate W/C. Outside to the rear is an enclosed low maintenance garden offering off road parking.

Viewings will be required and under a block viewing schedule.

Viewing

Please contact our Jones Potts Taylor Office on 01942 368600 if you wish to arrange a viewing appointment for this property or require further information.



2



2

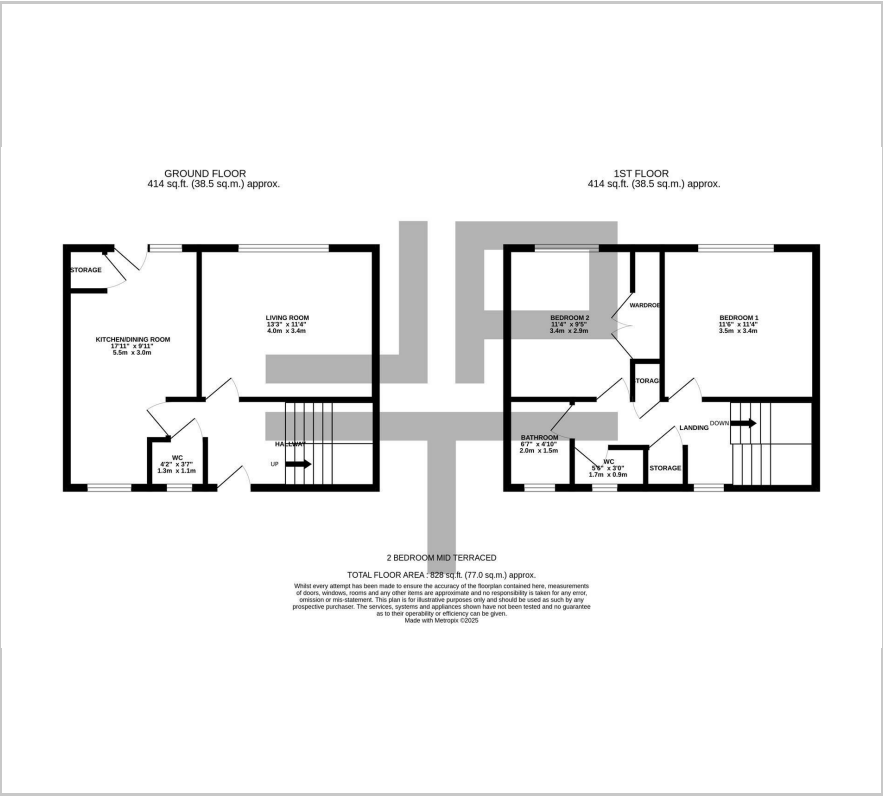


1



C

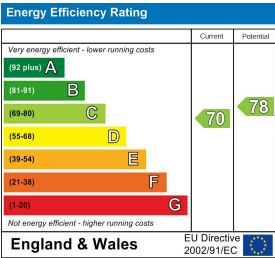
Floor Plan



Area Map



Energy Efficiency Graph



These particulars, whilst believed to be accurate are set out as a general outline only for guidance and do not constitute any part of an offer or contract. Intending purchasers should not rely on them as statements of representation of fact, but must satisfy themselves by inspection or otherwise as to their accuracy. No person in this firms employment has the authority to make or give any representation or warranty in respect of the property.