



92 Osborne Crescent, Chichester, PO19 7QJ

£165,000 Leasehold



1 Bedroom



1 Bathroom



1 Reception Room

Sw
Sims Williams

Key Features

- First Floor Purpose Built Flat
- Eastern Edge Of Chichester
- Westerly Facing Balcony
- Bright Sitting Dining Room
- Fitted Kitchen
- Double Bedroom
- Bathroom With Shower Over
- Private Garden
- Ideal First Time Buy

EPC Rating

Current = D

Potential = C

Council Tax Band

Band = B

Tenure - Leasehold

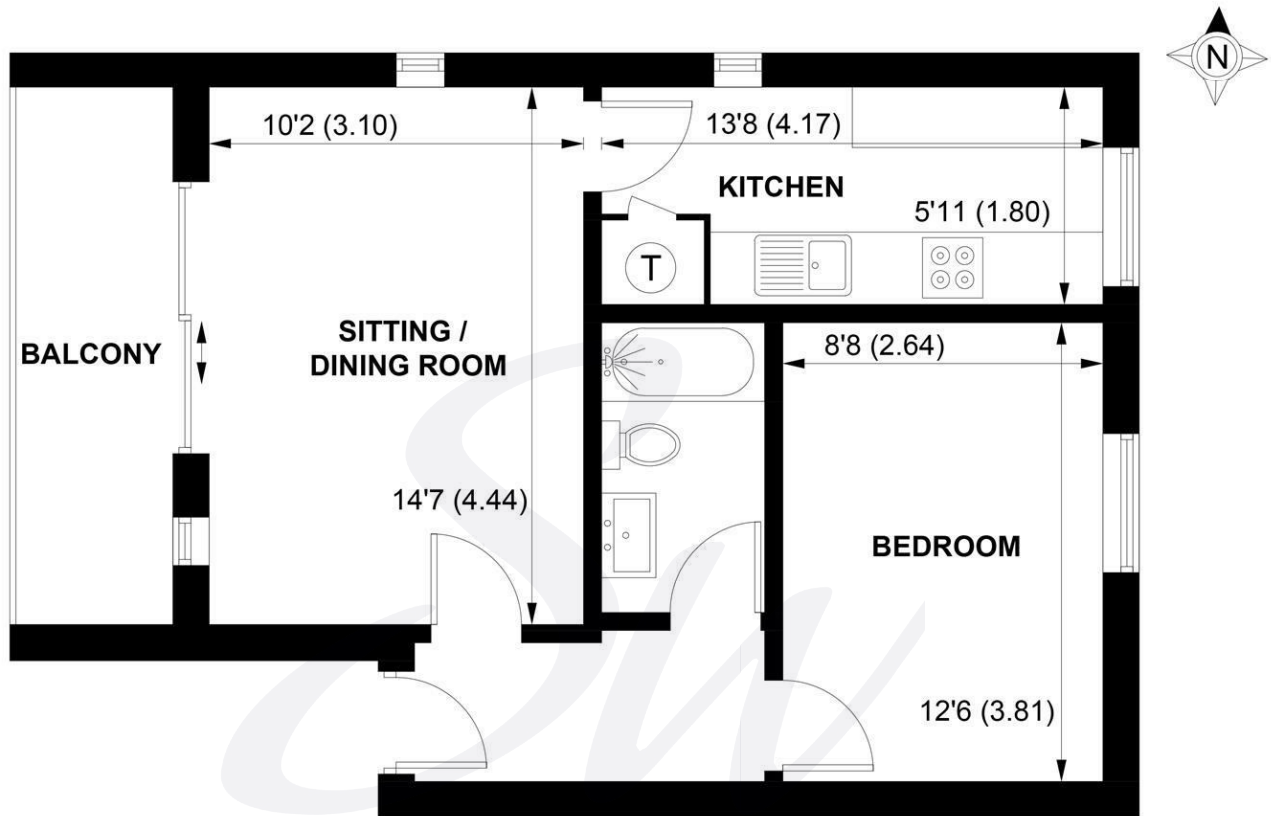
Length of Lease: 125 years

Years Remaining: 90 years

Ground Rent: £10.00 pa

Service Charge: £147.66 pa





FIRST FLOOR

APPROXIMATE GROSS INTERNAL AREA = 439 SQ FT / 40.8 SQ M

NOT TO SCALE (For illustrative purposes only as defined by RICS Code of Measuring Practice) 2026 ©
Produced for Sims Williams



simswilliams.co.uk

CHICHESTER

8-9 Southgate
Sales 01243 787868
Lettings 01243 836055
chichester@simswilliams.co.uk

WALBERTON

5 Maple Parade
Sales 01243 551368
Lettings 01243 836055
walberton@simswilliams.co.uk

ARUNDEL

8a High Street
Sales 01903 885678
Lettings 01903 881133
arundel@simswilliams.co.uk

BOGNOR REGIS

46 High Street
Sales 01243 862626
Lettings 01243 836055
bognor-regis@simswilliams.co.uk

Viewing Strictly by arrangement via the vendor's agent Sims Williams 01243 787868. These particulars are believed to be correct but their accuracy is not guaranteed and they do not form part of any contract.