



## First Floor Flat

St Stephen's Gardens | | London | W2 5NJ

£4,020 Per month

**ESON2**  
REAL ESTATE

## Key features

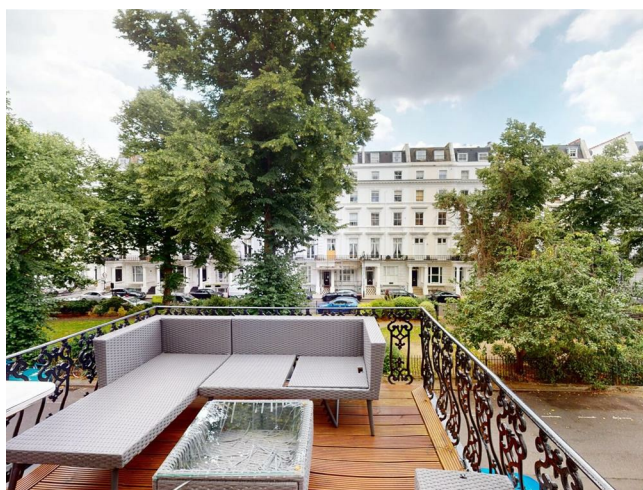
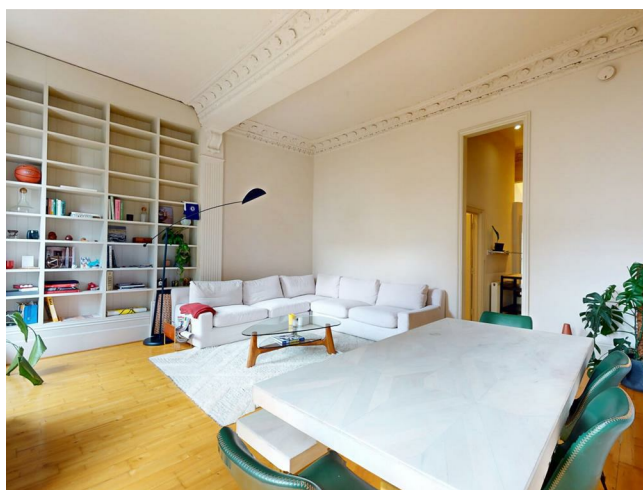
- Prime position on a coveted Notting Hill garden square
- Grand Victorian stucco building
- Generous open-plan reception and dining room
- Private terrace with ornate ironwork and garden square views
- Second flexible room — guest bedroom or storage
- High ceilings and intricate original cornicing throughout
- Moments from Notting Hill Gate, Westbourne Grove

## Description

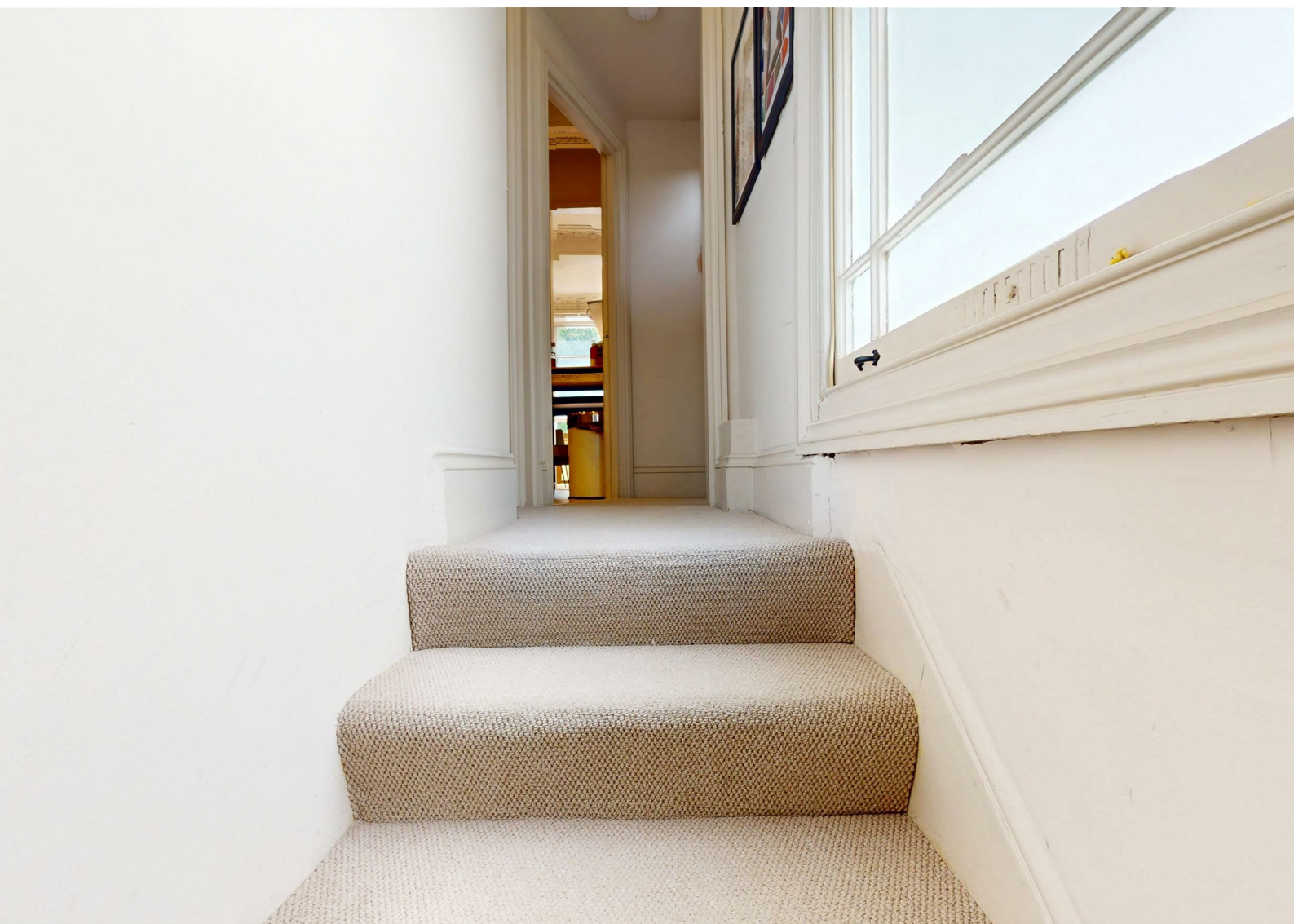
Set on one of Notting Hill's most elegant garden squares, this first floor apartment strikes a confident balance between period grandeur and relaxed contemporary living. Original cornicing and soaring ceilings sit effortlessly alongside warm oak floors, a curated interior and a full-height bespoke bookcase anchoring the generous open-plan reception.

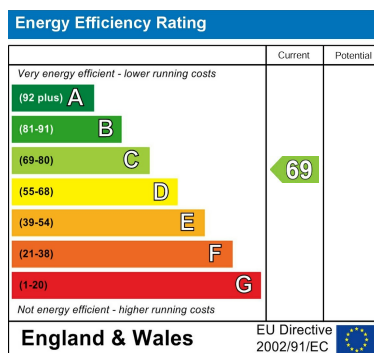
A rare private terrace at first floor level a private decked terrace looking out over the tree-lined square is an undoubted highlight. A characterful galley kitchen with bold monochrome encaustic tiles, a calm principal bedroom, Fully equipped shower room and a second flexible room complete this special Notting Hill home.

## Directions



An exceptional two-bedroom residence in a prestigious white stucco-fronted period building, overlooking beautifully maintained communal gardens. This refined apartment combines grand architectural heritage with sophisticated contemporary design.





Council Tax Band E    EPC Rating C



301 Michelin House 81 Fulham road  
London  
Greater London  
SW3 6RD  
07920 257649  
fayeel@eson2.co.uk  
www.eson2.co.uk