

Picton Place, KT6

£499,950

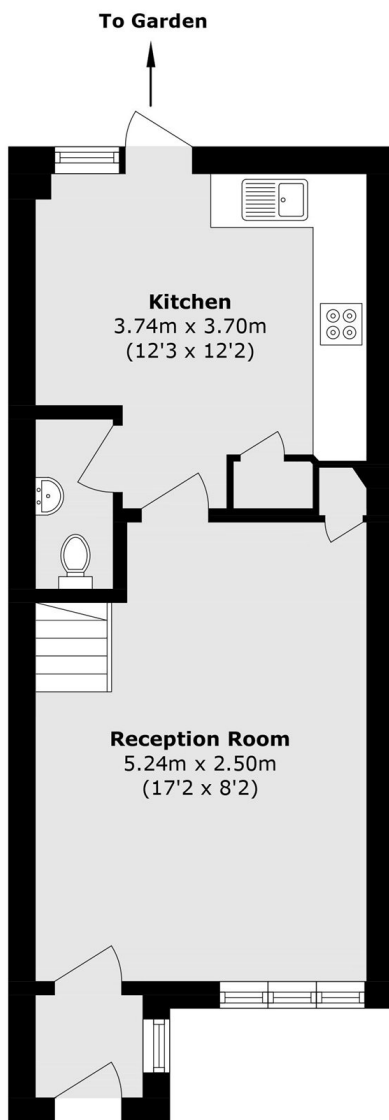
Tucked away in Picton Place is a well presented Mews house. There is a bright front reception room, separate eat-in kitchen/diner, two well proportioned bedrooms, one of which has an en-suite and an additional family bathroom. The property further benefits from a large rear garden, allocated parking and no onward chain.

The property is nestled in Picton Place off of Pyne Road and is ideally positioned for the local supermarkets, bars, restaurants, gyms, health centres and mainline stations, offering direct and efficient access in to London Waterloo.

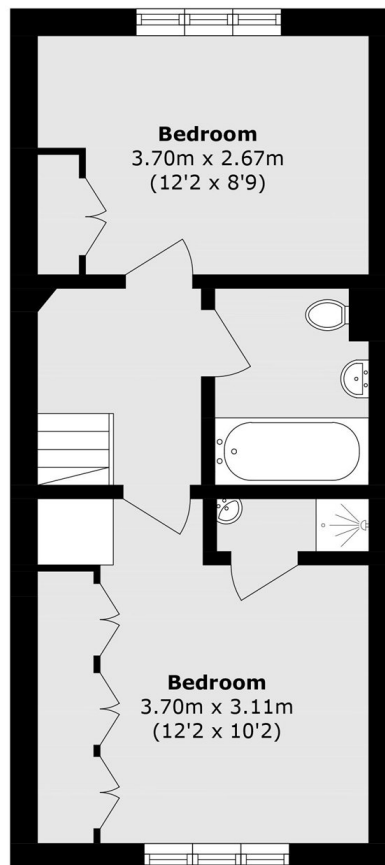
Features

- Mews Home
- Two Double Bedrooms
- En-Suite Shower Room
- Large Rear Garden
- Allocated Parking
- No Onward Chain

Picton Place, Surbiton, KT6



Ground Floor



First Floor

Total area (approx.): 68.3 sq. m (735.1 sq. ft)