

Well Presented 3-Bedroom Detached Bungalow in a Wonderful Location

Tenure: Freehold

Approx 156 sq meters (1679 sq ft)

Plot: Approx 0.18 acre

2 Denewood Copse,
West Moors, Ferndown. BH22 0NB

Price £600,000

- Entrance Poch & Spacious Hall
- Exceptionally Large Lounge/Dining Room
- Conservatory
- Superb Kitchen/Diner
- 3 Double Bedrooms
- En-Suite Shower Bathroom & Shower Room
- Gas Central Heating & Double-Glazing
- Delightful Landscaped Gardens
- Wide Driveway
- Integral Garage accessible from Bungalow
- Near to Amenities
- No Chain! Viewing Recommended!

Exceptionally spacious 3-bedroom detached bungalow with a floor area of approximately 1679 sq ft, occupying a mature location near to local amenities & protected forest walks. West Moors is a thriving village surrounded by greenbelt and yet within easy access to nearby towns such as Ferndown, Ringwood & Wimborne. Bournemouth, Poole & the New Forest National Park are within easy reach.

The property offers light & airy, well-planned accommodation combined with generous room dimensions. Features include an exceptionally large lounge/dining room & stunning kitchen/diner with vaulted ceiling. Viewing highly recommended!

Accommodation and approximate room sizes:

- **Enclosed Porch:** Ceramic tiled floor & LED lighting.
- **Spacious Hall:** Hatch to insulated roof space. Half-glazed double doors to:
- **Lounge/Dining Room:** An exceptionally spacious room with options for furniture layout. Opening to:
- **Conservatory:** Double & single door to garden. Self cleaning glass roof.
- **Kitchen/Diner:** An impressive room with a vaulted ceiling having sky-light windows flooding the room with natural light. Good range of base cupboards & drawers. Extensive worktops with inset Franke sink unit & electric Induction hob. AGA stove, run via gas supply. Integrated dishwasher & fridge/freezer. Door to garden.
- **Utility Room:** Sink unit & cupboards below. Space for washing machine & tumble dryer. Worcester boiler & cupboard housing pressurised water cylinder. Door to garage.
- **Bedroom 1:** Large fitted wardrobe. Window to side aspect.
- **En-Suite Bathroom:** Panelled bath with mixer tap and thermostatic shower over. Vanity wash basin & WC. Useful storage cabinets. Chrome heated towel rail.
- **Bedroom 2:** Front aspect window.
- **Bedroom 3:** Built-in double wardrobe. Front aspect window.
- **Shower Room:** Luxury wet room style shower with large rain shower head & hand held shower. Vanity wash basin & WC. Heated towel rail & vertical radiator.
- **Gas Central Heating, Double-Glazing & Cavity Wall Insulation**
- **Rear Garden:** Landscaped garden with large paved patio to the rear of the bungalow leading to lawn with mature shrub borders. Outside taps. Exterior electric point. Side gate. The garden enjoys a good degree of privacy and a sunny aspect.
- **Delightful front garden with wide driveway providing ample off-road parking, leading to:**
- **Integral Garage:** Electric up & over door. Door to Utility Room. Water tap. PIR lighting.
- **Council Tax Band 'E' Energy Rating 'C'**



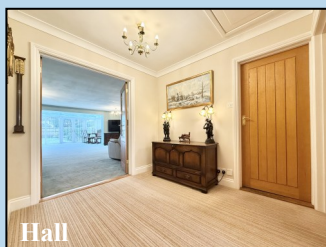
Superb Kitchen/Diner



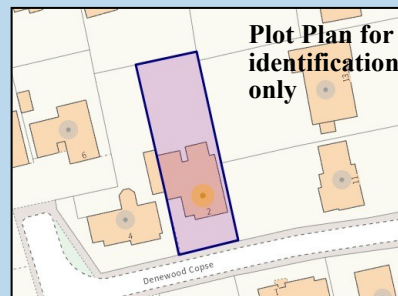
Vaulted Ceiling, Oak Doors & AGA



Porch



Hall



Plot Plan for identification only

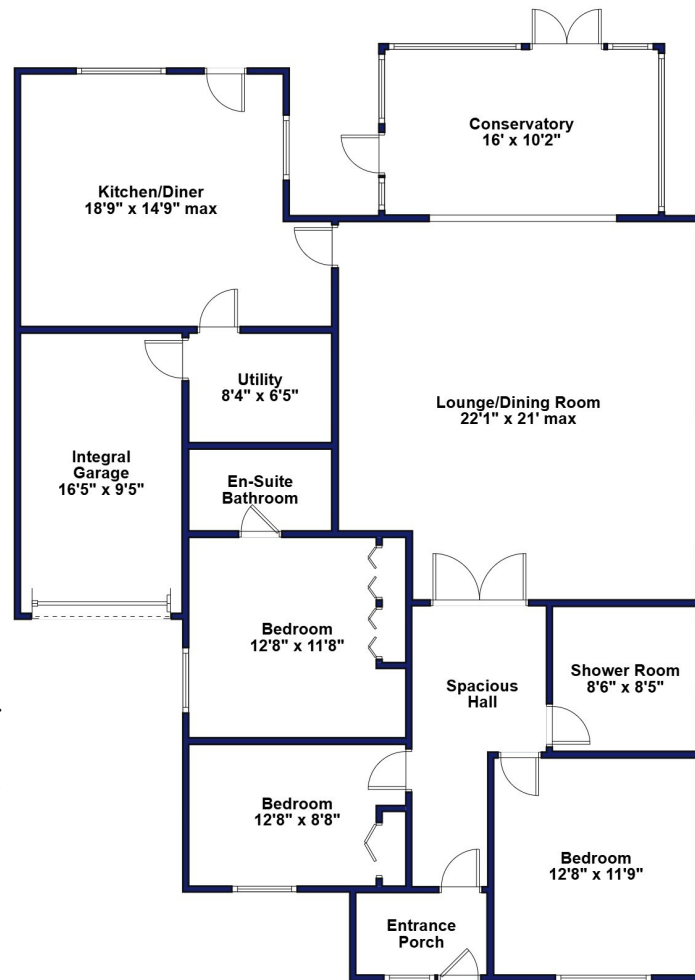


Sky Light Windows



Utility Room

IMPORTANT NOTE: These particulars are believed to be correct but their accuracy is not guaranteed. They do not form part of any contract. Nothing in these particulars shall be deemed to be a statement that the property is in good structural condition or otherwise, nor that any of the services, appliances, equipment or facilities are in good working order or have been tested. Purchasers should satisfy themselves on such matters prior to purchase. Ref W05201



This drawing has been prepared for diagrammatic purpose.
All measurements are approximate.
Not to scale.





Good 'Off-Road' Parking



Mature Garden



Sunny Garden



Rear Elevation