



*jordan fishwick*

Peveril Mews Disley Stockport



## Peveril Mews Disley Stockport SK12 2RN

Guide Price £253,500



### The Property

Tucked away on a small cul-de-sac, within a popular modern development, a superbly presented, brick built, **TWO DOUBLE BEDROOM** end mews property. Convenient for Newtown Railway Station and perfect for the First Time Buyer, this lovely home ticks the boxes! Driveway parking AND a single garage, enclosed low maintenance gardens with Indian Stone Paving, Pvc Double Glazing and Gas Central Heating. Comprising: entrance porch, living room, dining kitchen, two first floor bedrooms (smallest 12'0 x 7'8) and a re-fitted bathroom. Viewing highly recommended.



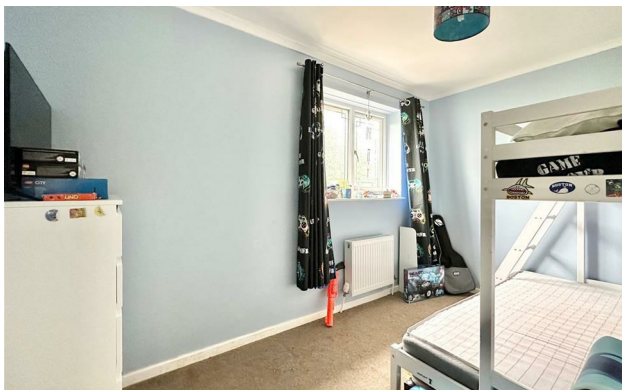
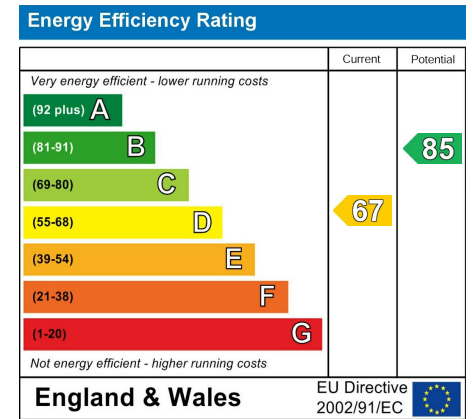
- Two Double Bed End Mews
- Tucked Away From The Cul-De-Sac
- Popular Modern Development
- Indian Stone Paved Garden
- Well Presented Throughout
- Convenient Location For Newtown Railway Station
- Pvc Double Glazing and Gas Central Heating
- Perfect For First Time Buyer
- Re-fitted Bathroom
- Viewing Advised

**Postcode** SK12 2RN

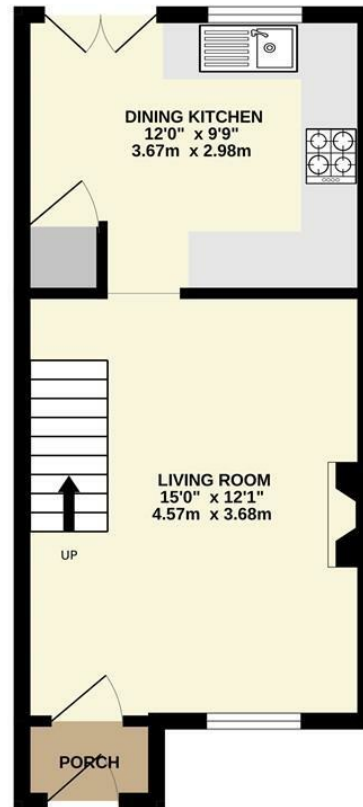
**EPC Rating** D

**Local Authority** Cheshire East

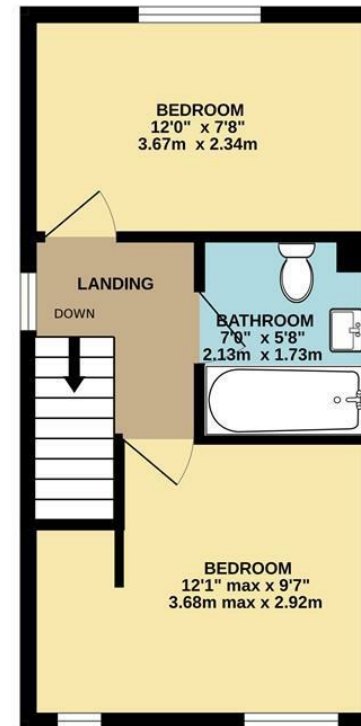
**Council Tax** B



GROUND FLOOR



1ST FLOOR



Whilst every attempt has been made to ensure the accuracy of the floorplan contained here, measurements of doors, windows, rooms and any other items are approximate and no responsibility is taken for any error, omission or mis-statement. This plan is for illustrative purposes only and should be used as such by any prospective purchaser. The services, systems and appliances shown have not been tested and no guarantee as to their operability or efficiency can be given.  
Made with Metropix ©2025



These particulars are believed to be accurate but they are not guaranteed and do not form a contract. Neither Jordan Fishwick nor the vendor or lessor accept any responsibility in respect of these particulars, which are not intended to be statements or representations of fact and any intending purchaser or lessee must satisfy himself by inspection or otherwise as to the correctness of each of the statements contained in these particulars. Any floorplans on this brochure are for illustrative purposes only and are not necessarily to scale.

Offices at: Chorlton, Didsbury, Disley, Hale, Glossop, Macclesfield, Manchester Deansgate, Manchester Whitworth Street, New Mills, Sale, Wilmslow and Withington

14 Market St, Disley, Cheshire, Stockport SK12 2AA

01663 767878

disley@jordanfishwick.co.uk

www.jordanfishwick.co.uk