



FORD ABBEY

Pudleston, Herefordshire



A HISTORIC FORMER MONASTIC ABBEY SET IN ITS OWN BEAUTIFUL VALLEY WITH GROUNDS SURROUNDING A NATURAL WATER GARDEN.

The Abbey

Hall | Drawing room | Sitting room | Dining room | Garden room | Study | Kitchen breakfast room | Cloakroom
Principal bedroom with dressing room and bathroom | Four further bedroom and bathrooms

The Barn

Divided into four houses each with open plan kitchen and living rooms, two with one bedroom and two with two bedrooms

Leisure complex

Heated indoor swimming pool, games room/potential gym, studio and shower rooms

Outbuildings

Garaging for three cars | Further barn with potential for additional garaging | Machinery stores | Additional stores | Orchard stables

Garden and grounds

Extensive landscaped grounds encompassing a natural water garden with running streams | Ornamental ponds
Delightful walkways | Four bridges and planting.

Land

Productive apple orchards and grassland paddock of about 8.5 acres

In all about 24.11 acres



Ford Abbey was first documented in the late 1120s as a chapelry of Leominster Priory, and by the early 1200s, it had come under the ownership of Reading Abbey. It is believed that a small community of monks resided there, primarily to care for the sick. Following the dissolution of Reading Abbey in 1539, the property passed into the hands of the Patehall family. Notably, John Patehall, who was appointed Escheator of Herefordshire in 1496—a royal officer responsible for managing the King’s rights in the county—became associated with the estate.

The current owners acquired Ford Abbey as a derelict farmstead and, driven by a deep respect for its heritage, commissioned a series of archaeological surveys to uncover its rich history. They then undertook a comprehensive restoration and enhancement of the property. Today, the main house serves as a comfortable family residence, enjoying charming views across the landscaped gardens and surrounding grounds.

Adjacent to the main house stands a substantial barn, which has been thoughtfully converted into four additional homes and a leisure complex. For a time, the property also operated as a boutique hotel, but it has since returned to being a private family home.





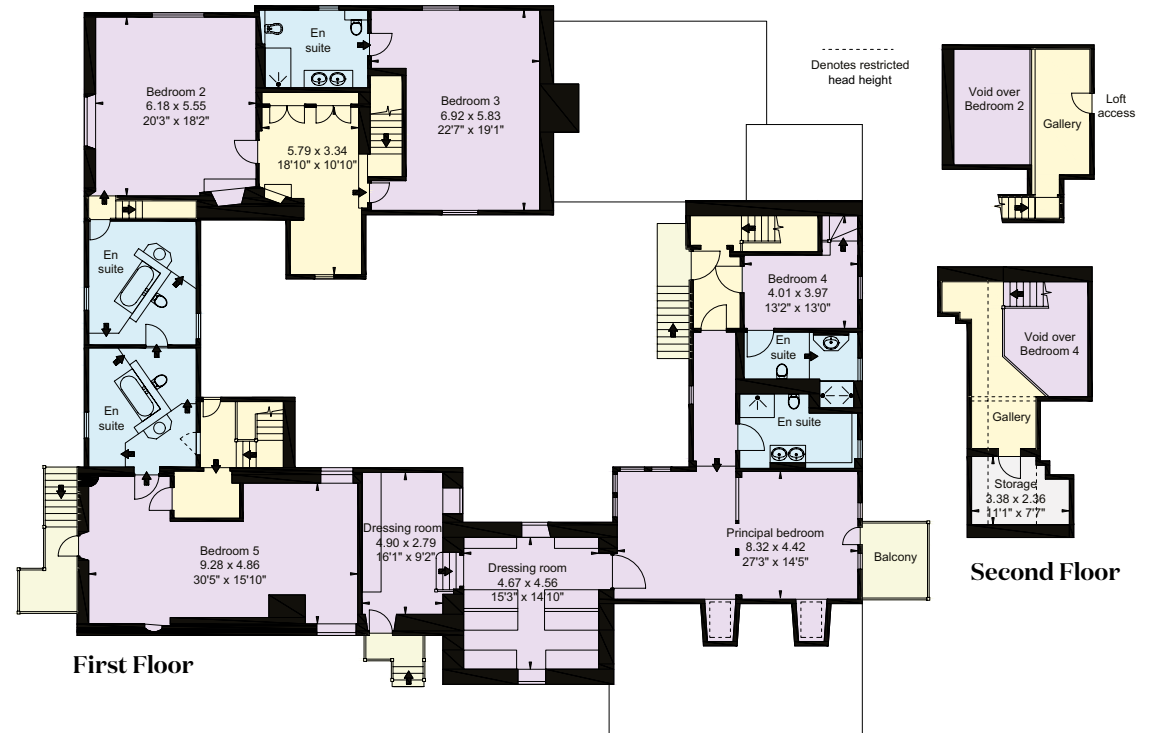
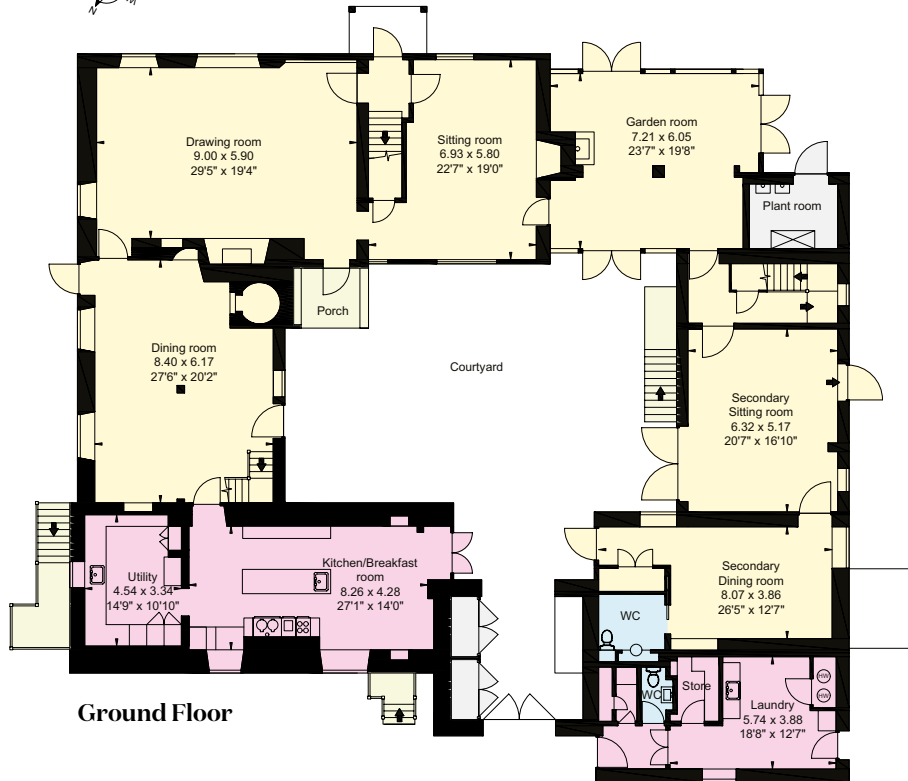








- Reception
- Bedroom
- Bathroom
- Kitchen/Utility
- Storage
- Outside



Approximate Gross Internal Area
House: 734 sq m (7,902 sq ft)

This plan is for layout guidance only. Not drawn to scale unless stated. Windows and door openings are approximate. Whilst every care is taken in the preparation of this plan, please check all dimensions, shapes and compass bearings before making any decisions reliant upon them.





Nestled in a tranquil and picturesque valley, completely secluded and surrounded by unspoiled countryside, this property offers a rare sense of peace and privacy—an increasingly precious asset in today’s fast-paced world. Located within the parish of Pudleston, a charming rural hamlet with deep historical roots, it is even recorded in the Domesday Book, reflecting its long-standing place in the English landscape.

The property sits at the heart of approximately 24.11 acres of beautifully maintained land, offering both space and serenity in equal measure. The house is perfectly positioned to take full advantage of its idyllic setting, surrounded by thoughtfully landscaped gardens and grounds that have been carefully designed to harmonise with the natural contours of the land. A meandering watercourse runs through the property, enhancing its natural beauty and creating a soothing, ever-present connection to the surrounding environment.

Numerous outdoor seating areas, lawns, and garden features have been strategically placed to provide inviting spaces for relaxation, contemplation, and entertaining—each offering its own unique view over the rolling countryside beyond. Whether enjoying a peaceful moment by the stream, taking in the views from a quiet garden nook, or walking the boundaries of the estate, the property delivers a rare combination of rural charm, natural beauty, and timeless elegance.

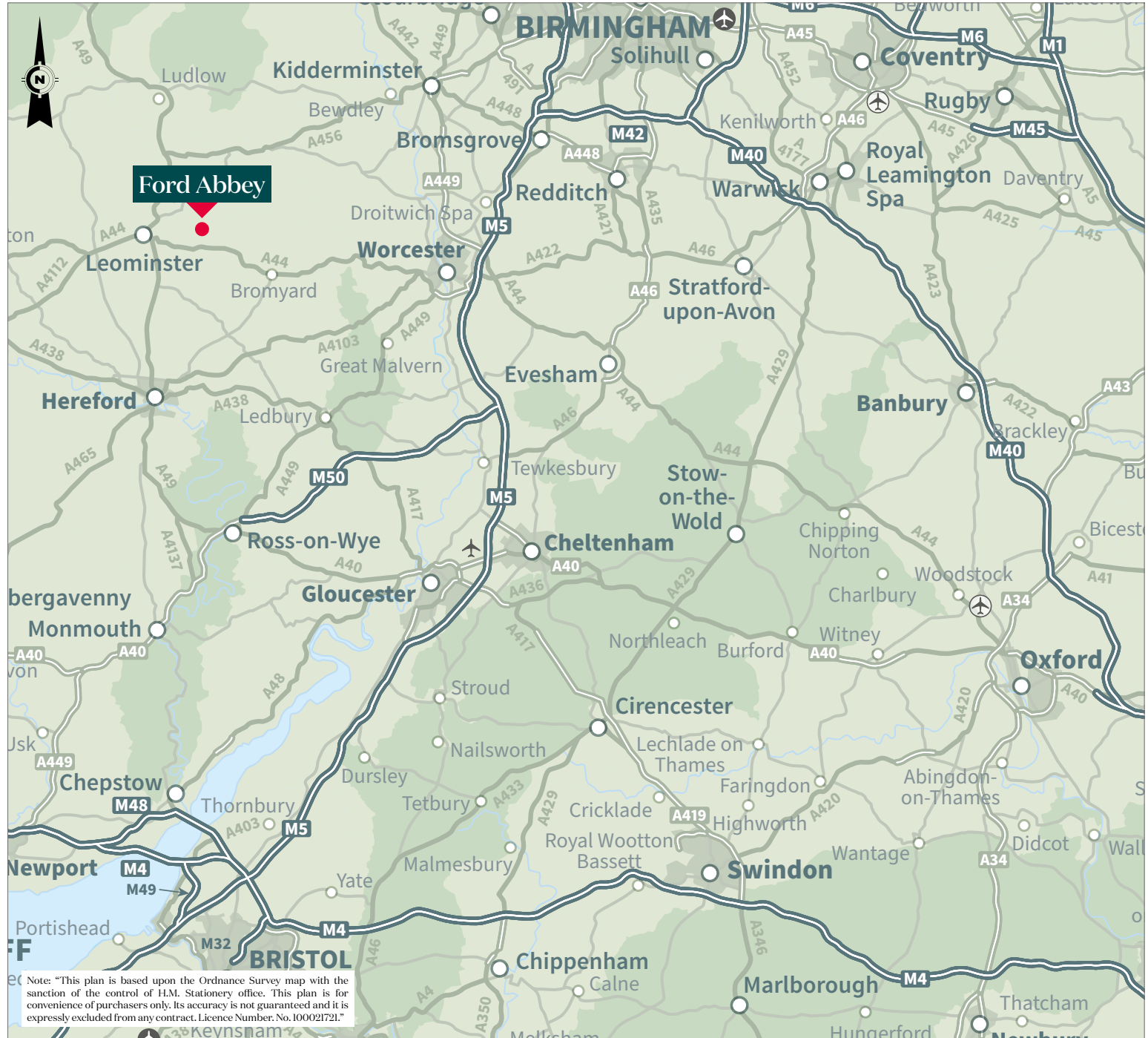
Communications are excellent with the historic towns of Hereford 18 miles and Worcester 24 miles, whilst the major centre of Birmingham is within 45 miles and London 170 miles.











We would be delighted
to tell you more.

Charles Probert
01905 746884
charles.probert@knightfrank.com

Knight Frank Hereford
The Rickyard, Hereford
HR1 3SJ

Christopher Dewe
020 7861 1779
christopher.dewe@knightfrank.com

Knight Frank National Country Department
55 Baker Street, London
W1U 8AN

knightfrank.co.uk

Your partners in property

Important Notice 1. Particulars: These particulars are not an offer or contract, nor part of one. You should not rely on statements given by KF West Midlands Ltd., in the particulars, by word of mouth or in writing ("information") as being factually accurate about the property, its condition or its value. Neither KF West Midlands Ltd, nor any joint agent has any authority to make any representations about the property, and accordingly any information given is entirely without responsibility on the part of KF West Midlands Ltd. 2. Material Information: Please note that the material information is provided to KF West Midlands Ltd, by third parties and is provided here as a guide only. While KF West Midlands Ltd, has taken steps to verify this information, we advise you to confirm the details of any such material information prior to any offer being submitted. If we are informed of changes to this information by the seller or another third party, we will use reasonable endeavours to update this as soon as practical. 3. Photos, Videos etc: The photographs, property videos and virtual viewings etc. show only certain parts of the property as they appeared at the time they were taken. Areas, measurements and distances given are approximate only. 4. Regulations etc: Any reference to alterations to, or use of, any part of the property does not mean that any necessary planning, building regulations or other consent has been obtained. A buyer must find out by inspection or in other ways that these matters have been properly dealt with and that all information is correct. 5. Fixtures and fittings: A list of the fitted carpets, curtains, light fittings and other items fixed to the property which are included in the sale (or may be available by separate negotiation) will be provided by the Seller's Solicitors. 6. VAT: The VAT position relating to the property may change without notice. 7. To find out how we process Personal Data, please refer to our Group Privacy Statement and other notices at <https://www.knightfrank.com/legals/privacy-statement>.

Particulars dated April 2026. Photographs and videos dated May 2025. All information is correct at the time of going to print. KF West Midlands Limited, a company registered in England and Wales with registered number 13144773. Our registered office is at 9 College Hill, Shrewsbury, Shropshire, SY1 1LZ. KF West Midlands Limited is an independently owned member of the Knight Frank Network operating under licence from Knight Frank LLP. Brochure by wordperfectprint.com