



# STURFORD MEAD

Corsley, Wiltshire



# A BEAUTIFULLY RESTORED REGENCY COUNTRY HOUSE

Set in established landscaped gardens and grounds, overlooking parkland and open countryside

## Summary of accommodation

**Ground Floor:** Reception hall | Dining room | Drawing room | Library | Morning room | Kitchen | Utility room | Pantry | Plate room  
Boot room | Cloakroom WC | TV room | Secondary Kitchen | Office

**First Floor:** Principal bedroom with dressing room and en suite bathroom | Seven further bedrooms | Four further bathrooms | Sitting room | WC

**Basement:** Extensive stores including Boiler room | Butler's pantry | Wine cellar | Old scullery | Office | Log store | Further storerooms

**Traditional outbuildings including:** Potting shed | Staff mess room | Garages | Parking

**Landscaped gardens and grounds:** Walled garden | Parterre | Pool terrace | Theatre garden | Ha-Ha  
Ornamental lake with waterfall | Arboretum | Woodland stream

**Lot 2 – Beech Tree Cottage:** Kitchen | Sitting room | Two bedrooms | Bathroom | Private garden | Parking

**In all about 9.72 acres**

**Distances:** Warminster 3 miles, Frome 5 miles, Westbury 6 miles (London Paddington from 1hr 20 minutes)  
Bath 17 miles, Bristol 29 miles, Bristol International Airport 40 miles, A303 8 miles  
(All distances and times are approximate)

# SITUATION

Sturford Mead is situated outside the village of Corsley near the Somerset border, and on the edge of the Longleat estate. Corsley is 3 miles from the market town of Warminster and 5 miles from the town of Frome. Both towns provide day-to-day amenities, shopping and leisure facilities. The World Heritage City of Bath is 17 miles away and offers an extensive range of shops, restaurants, museums and recreational facilities and high speed trains to London.

There is an excellent range of schools in the area, including the Royal High School, Kingswood and King Edward's School in Bath, Bryanston, the Sherborne schools, Marlborough College, Dauntsey's and Millfield further afield.

Communications are excellent; the A303 is approximately 8 miles to the south of the property; there are regular high speed trains from Westbury and Bath to London. There are also regular train services from Warminster and Frome. Bristol International Airport offers an extensive range of National and International flights.

# HISTORY

Sturford Mead was built in 1820 for Henry Austin Fussell, a clothier who owned a dye works nearby. The architect John Pinch the elder (1770-1825) was commissioned to design the house and did so in a style reminiscent of his work in Bath for which he is renowned.

In 1854, following the collapse of the cloth trade in the area, the house was sold to the Longleat Estate. They leased the house to various tenants until in the early 1930's Henry Thynne (Lord Weymouth, eldest son of the 5th Marquess of Bath) moved in with his wife Daphne. Many well known names of the time were guests at Sturford Mead including Evelyn Waugh, Lord Beaverbrook, Rex Whistler and the Mitford sisters being amongst them.



The death of the 5th Marquess after the war led to substantial death duties and Sturford Mead was auctioned. It failed to make its reserve and was eventually sold to a diplomat, Lees Mayall who lived at Sturford Mead for over 40 years.

On the death of Lees Mayall the house was sold to the Bradshaws who ran it as a bed and breakfast until 2008 when it was purchased by the present owner who over the last 18 years embarked on an extensive renovation aimed at restoring the original feel of the house.

## LOT 1: THE PROPERTY

Sturford Mead is a handsome Grade II listed country house, built in the Greek Revival style. It is set amongst beautiful grounds and enjoys glorious views over rolling open countryside. The house also looks across to Cley Hill, a prominent local landmark and Iron Age Hill Fort.

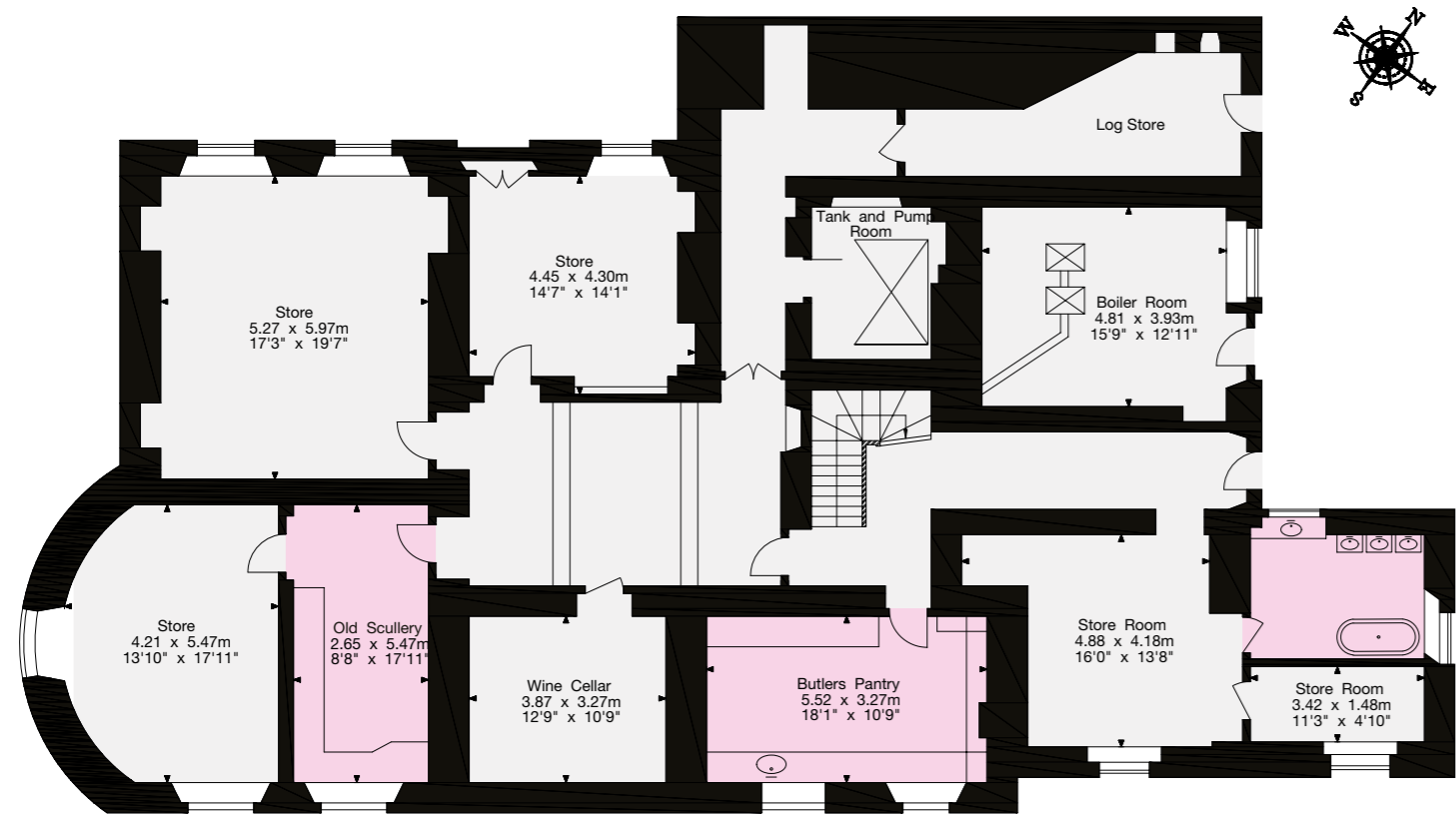
The ground floor provides impressive, well-proportioned reception rooms with floor to ceiling windows, all arranged around an elegant, cantilevered stone staircase. The space is ideal for entertaining as well as for comfortable daily family living. There is a stunning new kitchen with utility room and pantry. Additional rooms include plate room, TV room, office, secondary kitchen, and boot room.

The first floor provides a luxurious principal bedroom with dressing room and en suite bathroom, seven further double bedrooms, four further bathrooms, three of them renovated, sitting room and WC.

The basement houses extensive stores, including a scullery, wine cellar and numerous storerooms. The renovations have included replumbing throughout, new boilers, bespoke cabinetry, marble bathrooms, recently finished bespoke Guild Anderson kitchen, reinstated fireplaces, plus the reuse of original floorboards and period features.



- Reception
- Bedroom
- Bathroom
- Kitchen/Utility
- Storage
- Outside



Basement



Ground Floor



First Floor

Approximate Gross Internal Area  
1,045 sq m / 11,248 sq ft

This plan is for layout guidance only. Not drawn to scale unless stated. Windows and door openings are approximate. Whilst every care is taken in the preparation of this plan, please check all dimensions, shapes and compass bearings before making any decisions reliant upon them.



## GARDEN, GROUNDS AND OUTBUILDINGS

The beautiful gardens and grounds are a mixture of formal and informal areas interlinked with pathways. There are wide paved terraces, mature yew and beech hedging, a delightful parterre designed by Arabella Lennox-Boyd, a walled garden, mature wisteria and climbing roses, a theatre garden, and a wonderful array of specimen trees.





There has been extensive tree planting to create an arboretum, to include Oak, Beech, Copper Beech, Hornbeam, Metasequoia, Willow, Acer, Monkey Puzzle, and Ginkgo, enlivened by a waterfall and woodland stream.

There is extensive dry stone walling for security and privacy and a Ha-Ha along the boundary between Sturford Mead and Beech Tree cottage land.

To the south of the main house is a walled garden with established wisteria and climbing roses. There is also a potting shed, double garage, double machinery garage and numerous outbuildings.





# LOT 2: BEECH TREE COTTAGE

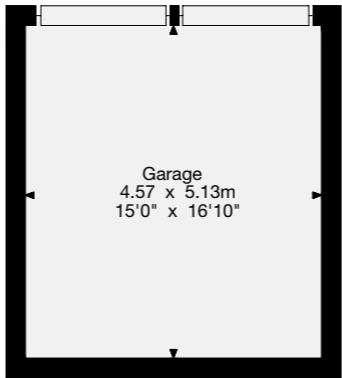
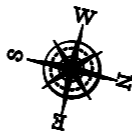
Situated on the north side of the house is a charming two bedroom cottage, which enjoys a private garden, a parking area and is set within approximately 3 acres.

## PROPERTY INFORMATION

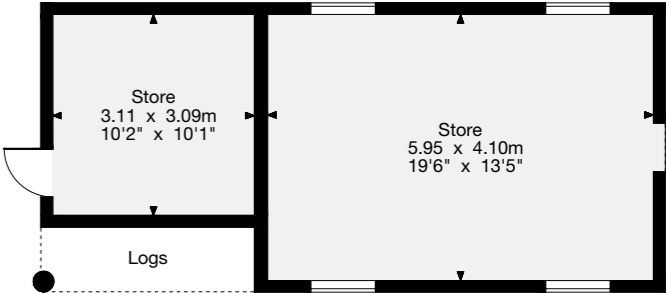
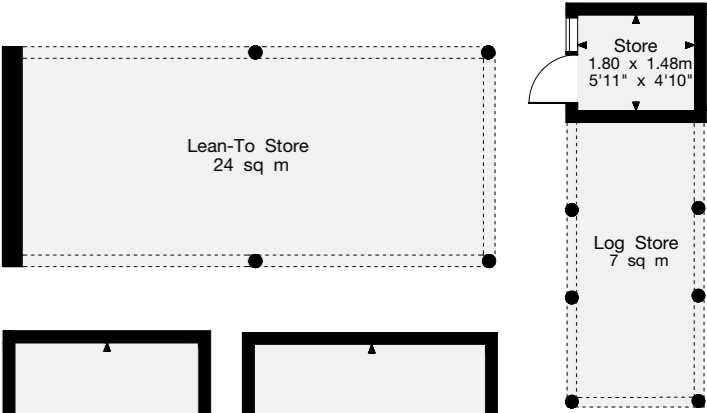
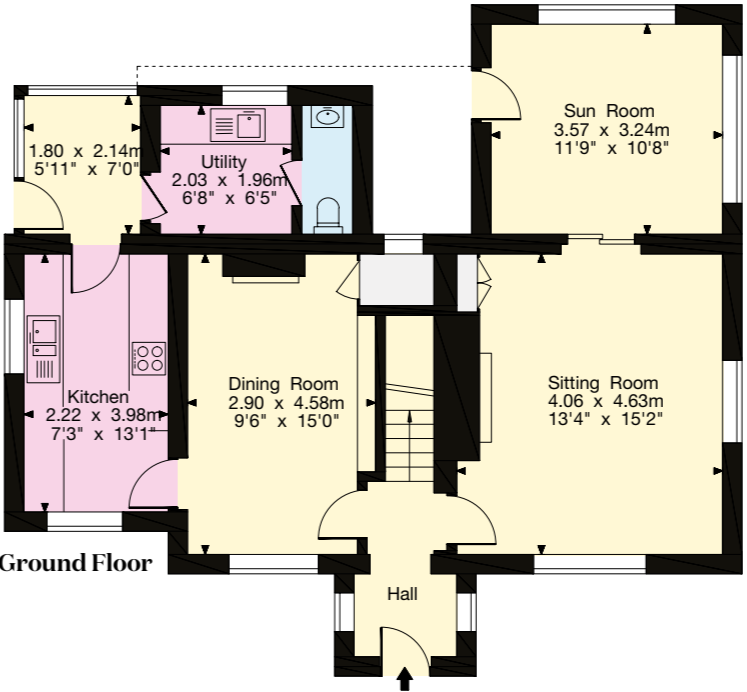
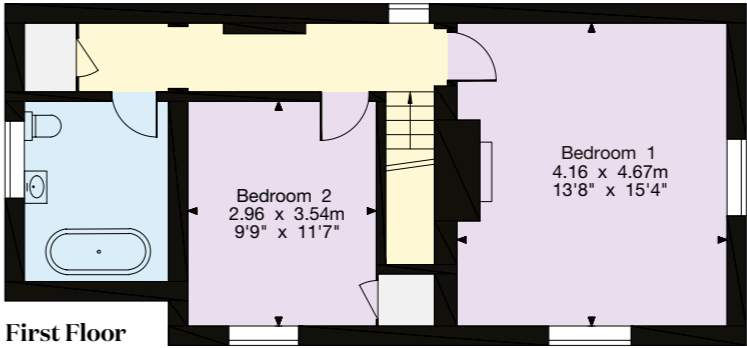
- Tenure:** Freehold
- Services:** Mains electricity, water and drainage.
- Local Authority:** Wiltshire County Council
- Council Tax Band:** H
- EPC Ratings:**  
Sturford Mead: E  
Beech Tree Cottage: F
- Postcode:** BA12 7QT
- What3Words:** ///walked.ladders.chum



- Reception
- Bedroom
- Bathroom
- Kitchen/Utility
- Storage
- Outside



Garage



Outbuildings

Approximate Gross Internal Area  
Main House = 124 sq m / 1,334 sq ft  
Garage = 23 sq m / 247 sq ft  
Outbuildings = 56 sq m / 602 sq ft  
Total Area = 203 sq m / 2,183 sq ft

This plan is for layout guidance only. Not drawn to scale unless stated. Windows and door openings are approximate. Whilst every care is taken in the preparation of this plan, please check all dimensions, shapes and compass bearings before making any decisions reliant upon them.



Charlie Taylor  
01225 325993  
charlie.taylor@knightfrank.com

Knight Frank Bath  
4 Wood Street, Bath  
BA1 2JQ

knightfrank.co.uk

James Walker  
020 7861 1186  
james.walker@knightfrank.com

Knight Frank Country Department  
55 Baker Street, London  
W1U 8AN

Hamish Humfrey  
020 7861 1717  
hamish.humfrey@knightfrank.com

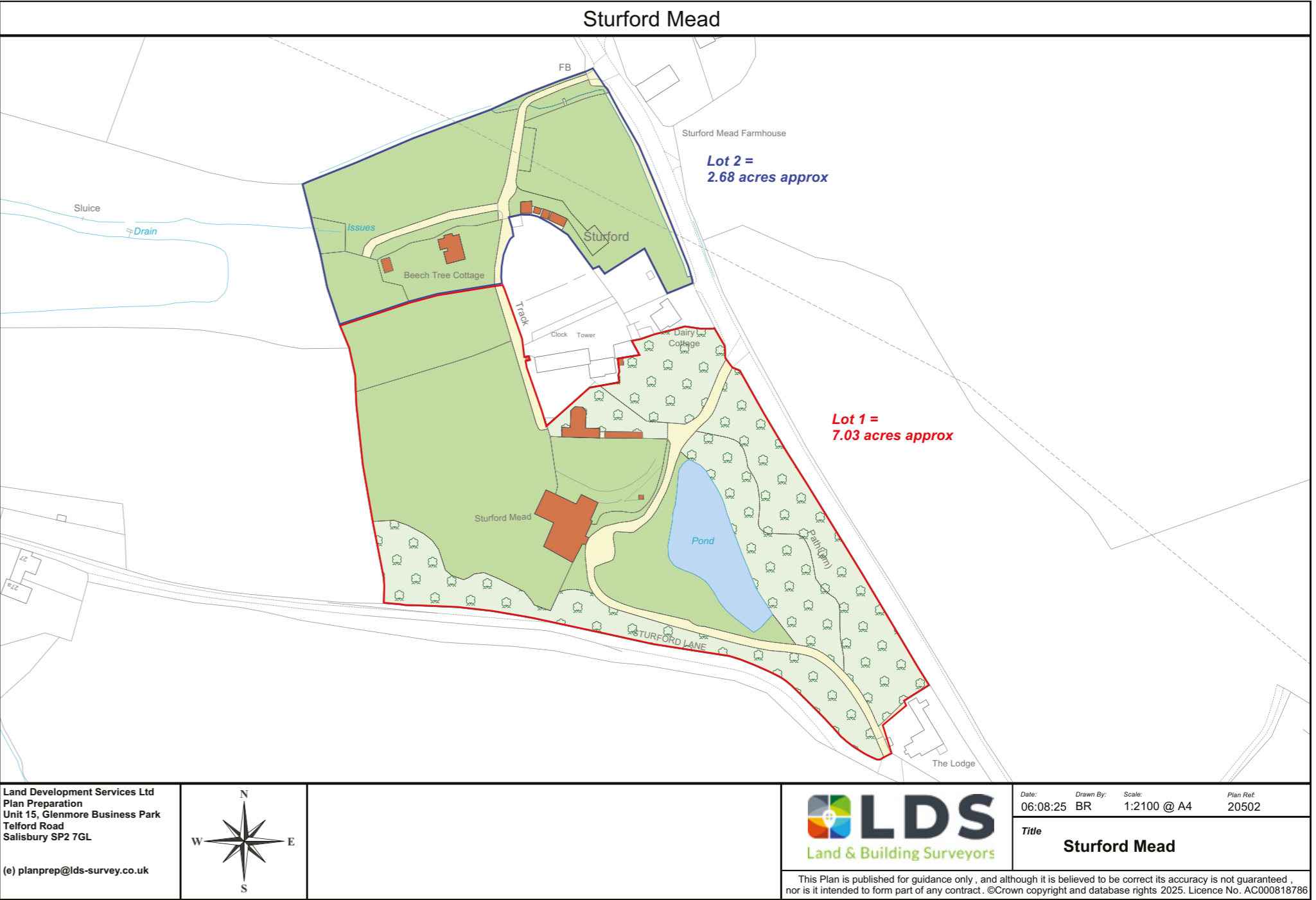
Knight Frank South West Region  
55 Baker Street, London  
W1U 8AN



Your partners in property

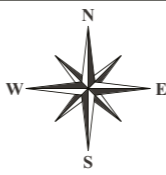
1. Particulars: These particulars are not an offer or contract, nor part of one. You should not rely on statements given by Knight Frank in the particulars, by word of mouth or in writing ("information") as being factually accurate about the property, its condition or its value. Neither Knight Frank nor any joint agent has any authority to make any representations about the property, and accordingly any information given is entirely without responsibility on the part of Knight Frank. 2. Material Information: Please note that the material information is provided to Knight Frank by third parties and is provided here as a guide only. While Knight Frank has taken steps to verify this information, we advise you to confirm the details of any such material information prior to any offer being submitted. If we are informed of changes to this information by the seller or another third party, we will use reasonable endeavours to update this as soon as practical. 3. Photos, Videos etc: The photographs, property videos and virtual viewings etc. show only certain parts of the property as they appeared at the time they were taken. Areas, measurements and distances given are approximate only. 4. Regulations etc: Any reference to alterations to, or use of, any part of the property does not mean that any necessary planning, building regulations or other consent has been obtained. A buyer must find out by inspection or in other ways that these matters have been properly dealt with and that all information is correct. 5. Fixtures and fittings: A list of the fitted carpets, curtains, light fittings and other items fixed to the property which are included in the sale (or may be available by separate negotiation) will be provided by the Seller's Solicitors. 6. VAT: The VAT position relating to the property may change without notice. 7. To find out how we process Personal Data, please refer to our Group Privacy Statement and other notices at <https://www.knightfrank.com/legals/privacy-statement>.

Particulars dated January 2026. Photographs and videos dated July 2025. All information is correct at the time of going to print. Knight Frank is the trading name of Knight Frank LLP. Knight Frank LLP is a limited liability partnership registered in England and Wales with registered number OC305934. Our registered office is at 55 Baker Street, London W1U 8AN. We use the term 'partner' to refer to a member of Knight Frank LLP, or an employee or consultant. A list of members names of Knight Frank LLP may be inspected at our registered office. If you do not want us to contact you further about our services then please contact us by either calling 020 3544 0692, email to [marketing.help@knightfrank.com](mailto:marketing.help@knightfrank.com) or post to our UK Residential Marketing Manager at our registered office (above) providing your name and address.



Land Development Services Ltd  
Plan Preparation  
Unit 15, Glenmore Business Park  
Telford Road  
Salisbury SP2 7GL

(e) [planprep@lds-survey.co.uk](mailto:planprep@lds-survey.co.uk)



Date: 06:08:25  
Drawn By: BR  
Scale: 1:2100 @ A4  
Plan Ref: 20502

Title  
**Sturford Mead**

This Plan is published for guidance only, and although it is believed to be correct its accuracy is not guaranteed. It is not intended to form part of any contract. ©Crown copyright and database rights 2025. Licence No. AC000818786

