



HILLVIEW, HILLTOP CLOSE, SHREWTON, SALISBURY SP3 4EB

01722 238711

BAXTERS
PROPERTY & LAND AGENTS



HILLVIEW, HILLTOP CLOSE, SHREWTON, SALISBURY SP3 4EB
PRICE GUIDE: £595,000

Here we have Hillview, a brand new 4 bedroom detached bungalow of about 1200sqft presently under construction. The property enjoys a pleasant location with easy access to all local amenities and has the benefit of far reaching countryside views. It is expected that the property will be completed and available for occupation in August 2026.

The accommodation comprises of a large central reception hall, open plan living with a double aspect sitting area and a large well equipped kitchen/dining area with bifold doors opening out to a large landscaped garden, principal bedroom with ensuite shower room, three further double bedrooms and a family bathroom.

The bungalow will be completed to a high standard with a specification yet to be finalised, but which will include:

Internal:

Full triple glazing
Air source heating (underfloor) - Vaillant Air Source Pump
Amtico flooring throughout
Oak internal doors
On-trend Kitchen with integrated appliances
On-trend bathroom and shower room sanitaryware and fittings

External:

Gravelled Drive
Point for EV Charger
Power Point and security lighting
Water tap
Garden to be landscaped with porcelain paved patio and turfed lawn

TENURE AND SERVICES: Tenure: Freehold. Local Authority: Wiltshire Council. Council Tax Band TBC . Mains Water and Electricity. Air Source Heat Pump. Mains Drainage. Fully Double Glazed.

LOCATION: Shrewton offers a range of facilities including a general store, garage, schooling, public houses and a doctor's surgery. The famous cathedral city of Salisbury, to the south, has an excellent range of shops, sports and social amenities including a thriving theatre and arts centre and there are many excellent schools in the private and state sector in the region. The city has a mainline rail station serving London's Waterloo and the West Country. A mainline rail service also operates from Pewsey to London (Paddington). In addition there are good road links to the A303 and the M3.

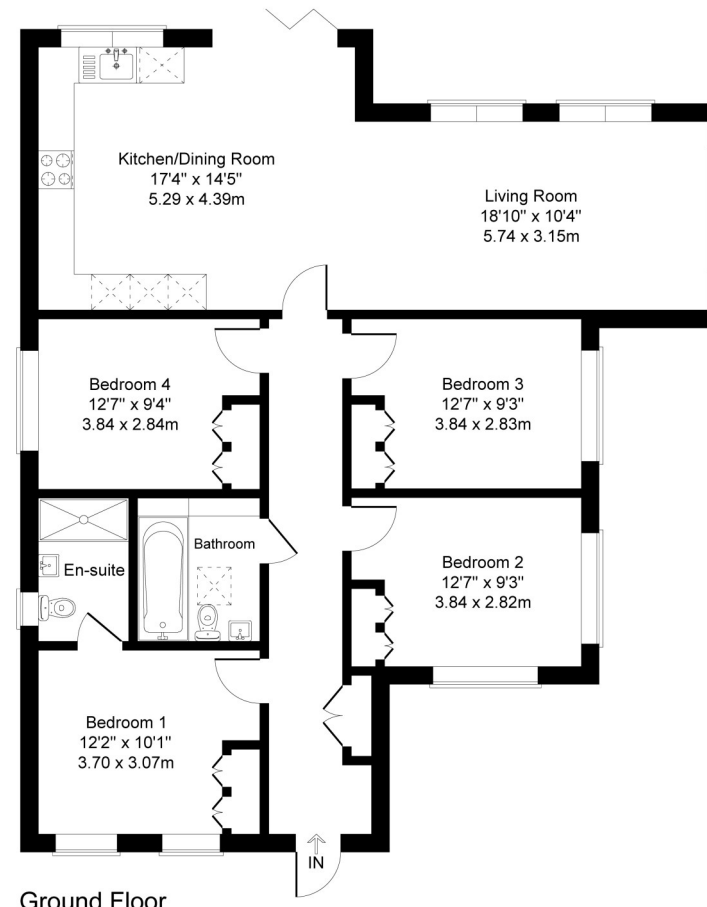
DIRECTIONS: From the Cathedral city of Salisbury proceed along the A360 Devizes Road for approximately 8 miles to the Longbarrow roundabout (the junction with the A303), continue across still following the A360 and proceed to the next roundabout with Stonehenge Visitor Centre on your right hand side. Take the first exit left, still following the A360 and continue into Shrewton, at the roundabout turn right onto the High Street and take the second right into Highfield Rise, continue up the hill taking the 2nd right signed Highfield Rise, leading to Hilltop Close. The property can be found on the left hand side.

AWAITING SAP



Hillview Hilltop Close Shrewton Salisbury SP3 4ED

Approximate Gross Internal Area = 1199 sq ft - 111 sq m



Ground Floor

Illustration for identification purposes only, measurements are approximate, not to scale.

DECLARATION: For clarification, we wish to inform prospective purchasers that we have prepared these particulars as a general guide. We have not carried out a detailed survey nor tested the services, appliances and specific fittings. Room sizes should not be relied upon for carpets and furnishings. The particulars do not constitute or form part of an offer or contract nor may they be regarded as representations. All interested parties must themselves verify their accuracy. Ref: 10833.