



Primrose Close, Ramsey Huntingdon
£210,000 Freehold

**Sharman
Quinney**

Key Features



- Downstairs Cloakroom
- Recently Redecorated Throughout
- Village Location
- Garden Room Built In 2019
- Walking Distance to Local Primary School and Convenience Store

Description

Ground Floor

Entrance Hall
Leading to

Kitchen/ Breakfast Room - 14'0" x 9'6" (4.27m x 2.90m)

Recently renovated and fitted with a matching range of base and eye-level units with oak worktops and window to front.

Cloakroom

Fitted with a two-piece suite and comprising of a wash hand basin, low-level-WC and window to front.



Lounge - 16'7" Max x 15'9" Max (5.05m Max x 4.80m Max)

Featured electric fireplace, understairs storage cupboard, window to rear and French Doors leading to the Garden.

First Floor

Master Bedroom - 13'3" Max x 9'6" (4.04m Max x 2.90m)

Fitted wardrobes with window to front and leading to;

En-Suite

Recently renovated and fitted with a three-piece suite and comprising of a shower cubicle, wash hand basin and low-level-WC.

Bedroom 2 - 10'8" x 9'5" (3.25m x 2.87m)

Window to rear.

Family Bathroom

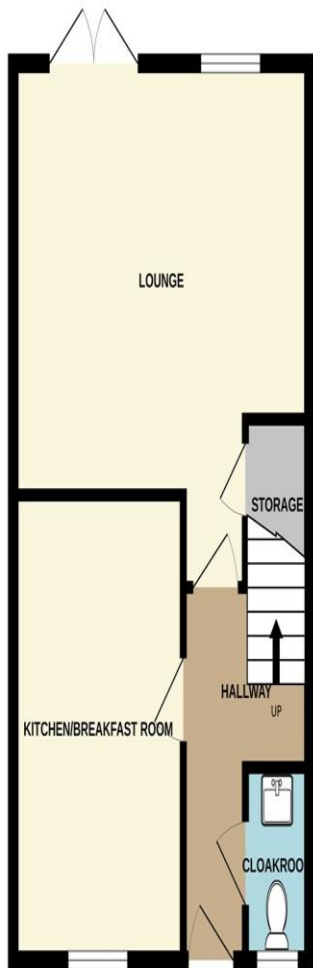
Fitted with a three-piece suite and comprising of a bath with overhead shower, wash hand basin, low-level-WC and window to rear.

Bedroom 3 - 9'0" x 6'8" (2.74m x 2.03m)

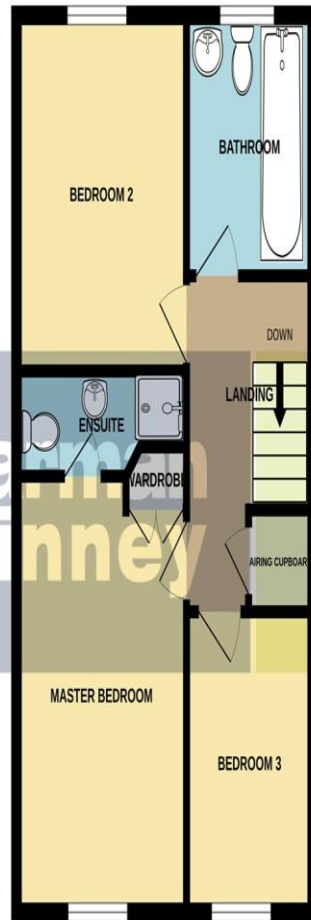
Window to front.



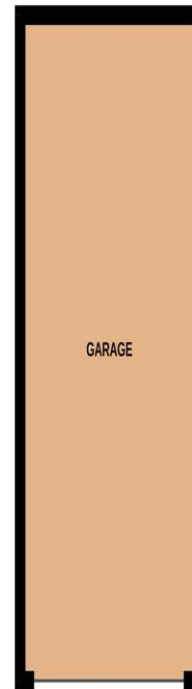
GROUND FLOOR



1ST FLOOR



GARAGE



Outside

The rear enclosed garden offers a generous decked seating area with laid lawn to the rear and gravelled walkway to side leading through to the Single Garage and Off-Road Parking.

Garden Room

Built in 2019, the Garden Room offers a multifunctional space with electric, and French Doors to front. The side of the Garden Room offers a purposed build storage area perfect for all garden tools.

Whilst every attempt has been made to ensure the accuracy of the floorplan contained here, measurements of doors, windows, rooms and any other items are approximate and no responsibility is taken for any error, omission or mis-statement. This plan is for illustrative purposes only and should be used as such by any prospective purchaser. The services, systems and appliances shown have not been tested and no guarantee as to their operability or efficiency can be given.
Made with Metropix ©2026

To view this property call Sharman Quinney on:
01487 710345

Selling your property?

Contact us to arrange a **FREE** home valuation.

 01487 710345

 17 Great Whyte, Ramsey, HUNTINGDON,
Cambridgeshire, PE26 1HG

 ramsey@sharmanquinney.co.uk

 www.sharmanquinney.co.uk



 SCAN ME



Sharman Quinney Holdings Limited is registered in England and Wales under company number 4174227, Registered Office is Cumbria House, 16-20 Hockliffe Street, Leighton Buzzard, Bedfordshire, LU7 1GN. VAT Registration Number is 500 2481 05.

1: These particulars do not constitute part or all of an offer or contract. 2: The measurements indicated are supplied for guidance only and as such must be considered incorrect. 3: Potential buyers are advised to recheck the measurements before committing to any expense. 4: Sharman Quinney has not tested any apparatus, equipment, fixtures, fittings or services and it is the buyers interests to check the working condition of any appliances. 5: Sharman Quinney has not sought to verify the legal title of the property and buyers must obtain verification from their legal representative. 6: Intending purchasers will be asked to produce identification documentation at a later stage and we would ask your co-operation in order that there will be no delay in agreeing the sale. Ref: RAM204769 - 0001

