



219 Fairview Road, Stevenage

Stevenage

CHANDLERS

Guide Price £600,000

# 219 Fairview Road

Stevenage, Stevenage

An attractive and well-presented 1930s bay-fronted semi-detached home, benefiting from a superb private rear garden extending to approximately 150ft. Ideally located within a short walk of the mainline railway station, New Town Centre, and the Historic Old Town High Street.

The property has been thoughtfully enhanced, including a loft conversion creating a spacious fourth bedroom with modern en-suite, and an extended, refitted open-plan kitchen/breakfast room, ideal for contemporary living.

Retaining a number of original character features, the home includes exposed floorboards, stripped internal doors, elegant bay windows to the lounge and principal bedroom with curved radiators, and attractive leaded stained-glass detailing. Additional benefits include hardwood double-glazed windows in places, gas central heating, and bespoke oak built-in furniture to the dining room and two bedrooms.

The accommodation comprises an entrance porch, welcoming reception hallway, cloakroom/WC, lounge with feature fireplace, dining room, and open-plan kitchen/breakfast room. The first floor offers three well-proportioned bedrooms and a four-piece family bathroom, while the second floor provides the loft-converted fourth bedroom with en-suite.

Externally, a recently re-laid driveway provides off-road parking for at least multiple vehicles with an electric vehicle charging point. The property also benefits from a new roof installed in December 2023 with a 25-year guarantee.

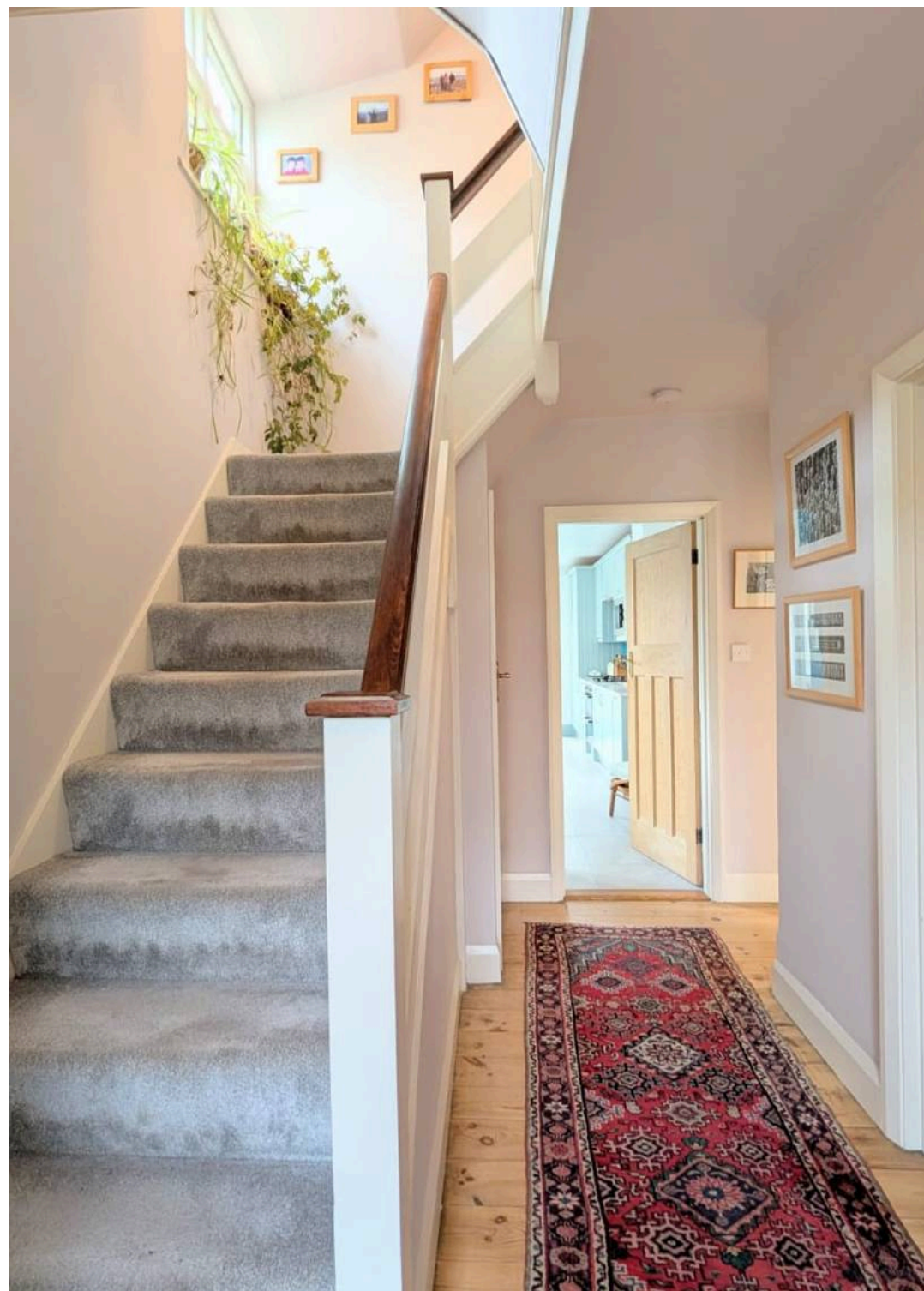
(Stevenage Borough Council - Council Tax Band E - EPC D)

Council Tax band: E

Tenure: Freehold

EPC Energy Efficiency Rating: D

EPC Environmental Impact Rating: E





## 219 Fairview Road

Stevenage, Stevenage

- Well presented 1930's bay fronted semi detached home
- Highly desirable location within walking distance to the train station, historic high street and town centre
- Original features including bay windows, exposed floorboards, stripped doors and stained glass windows
- Spacious entrance hallway and downstairs wc
- Lounge with feature fireplace and bay window
- Modern kitchen and separate dining room
- Three spacious bedrooms and bathroom to the first floor
- Loft conversion to main bedroom and en-suite
- Large 150ft rear garden
- Driveway to the front for multiple cars





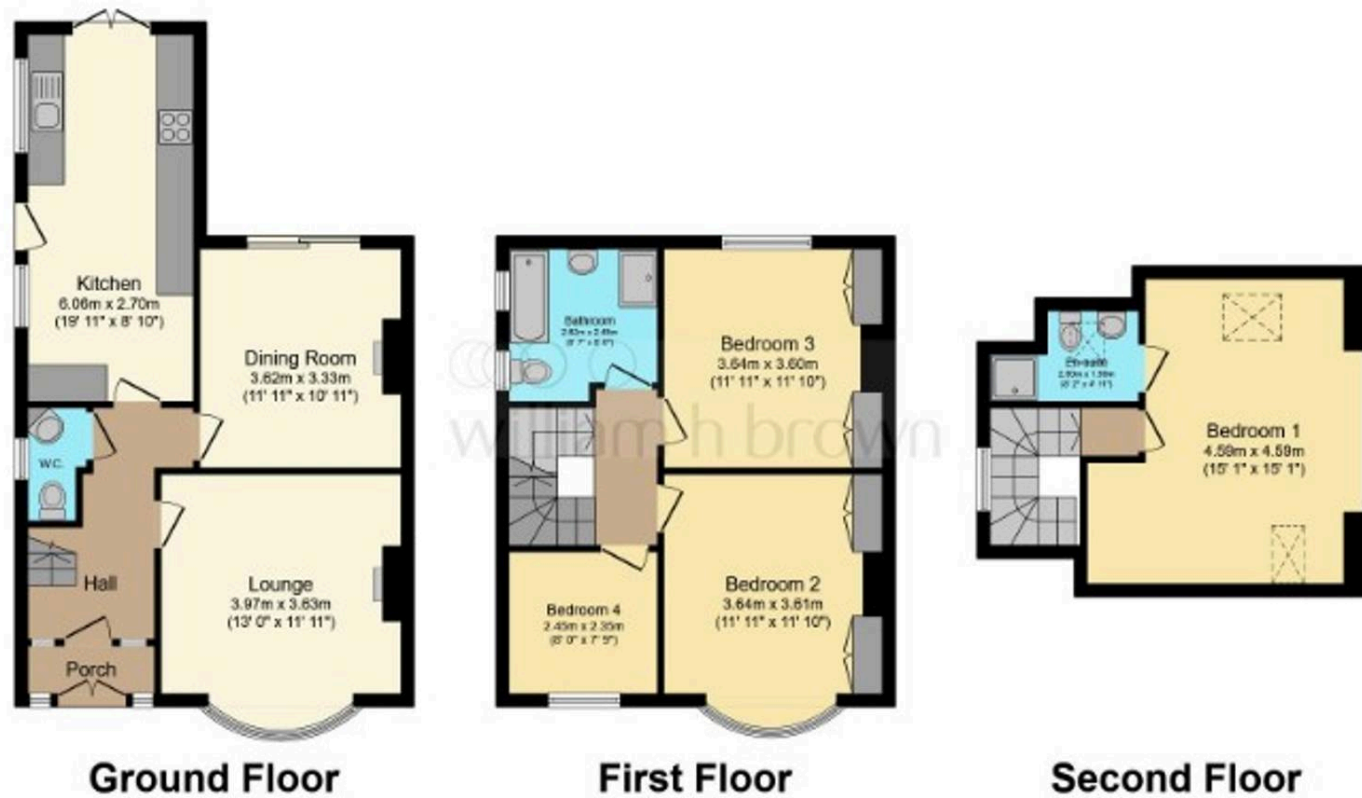


**DRIVEWAY**

3 Parking Spaces







Total floor area 130.5 m<sup>2</sup> (1,405 sq.ft.) approx

This floor plan is for illustrative purposes only. It is not drawn to scale. Any measurements, floor areas (including any total floor area), openings and orientation are approximate. If details are guaranteed, they cannot be relied upon for any purpose and they do not form part of any agreement. No liability is taken for any error, omission or misstatement. A purchaser must rely upon its own inspection(s). Powered by [www.focalagent.com](http://www.focalagent.com)

## Chandlers Estate Agents

Chandlers, 18 Market Place – SGI 1DB

01438356635

[sales@chandlers-estates.co.uk](mailto:sales@chandlers-estates.co.uk)

[www.chandlers-estates.co.uk/](http://www.chandlers-estates.co.uk/)

While we believe the details provided to be correct, we do not guarantee their accuracy. Prospective buyers should verify all information independently before making any decisions. No responsibility is taken for any errors, omissions, or misstatements.