



Isabella Close, London, N14

Addison Townsend are delighted to offer this well presented ground floor studio apartment offered to the market chain free. Located 0.4 miles from Southgate Tube Station (Piccadilly Line) & High Street, the property also benefits from being within the catchment area of several well regarded local schools. The property has been well maintained throughout & offers a spacious reception area, separate sleeping area, a fully fitted kitchen & a three piece bathroom suite, making it an ideal choice for first time buyers & investors alike. The property is also offered with an extended lease of approximately 160 years.

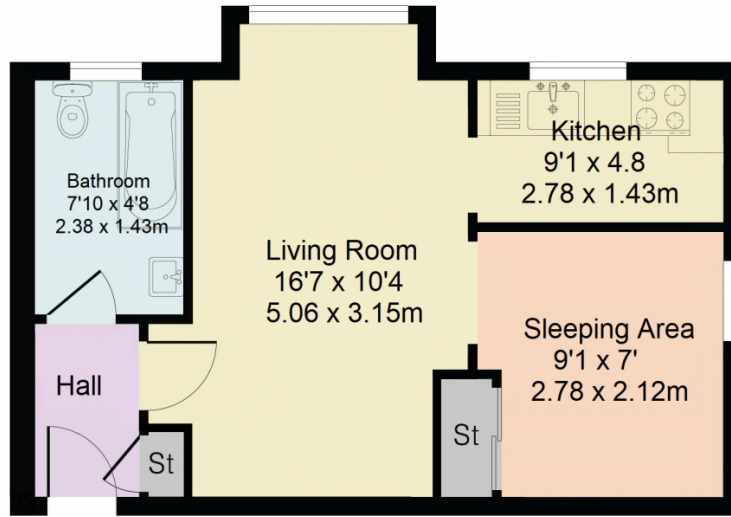




Tenure : Leasehold
Council Tax Banding : C
EPC D
Sq.Ft : 333



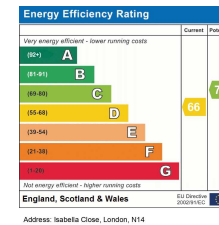
Approximate Gross Internal Area 334 sq ft - 31 sq m



Although Pink Plan Ltd ensures the highest level of accuracy, measurements of doors, windows and rooms are approximate and no responsibility is taken for error, omission or misstatement. These plans are for representation purposes only as defined by RICS code of measuring practise. No guarantee is given on total square footage of the property within this plan. The figure icon is for initial guidance only and should not be relied on as a basis of valuation.



Whilst every care has been taken to prepare these particulars, they are for guidance purposes only. All measurements are approximate and for general guidance purposes only. Whilst every care has been taken to ensure their accuracy, they should not be relied upon and potential buyers/ternants are advised to recheck the measurements



02088826828

www.addisontownsend.co.uk

info@addisontownsend.co.uk



ADDISON TOWNSEND
PROPERTY PROFESSIONALS

