



## Great Cumberland Place, W1H

£5,416 Per calendar month

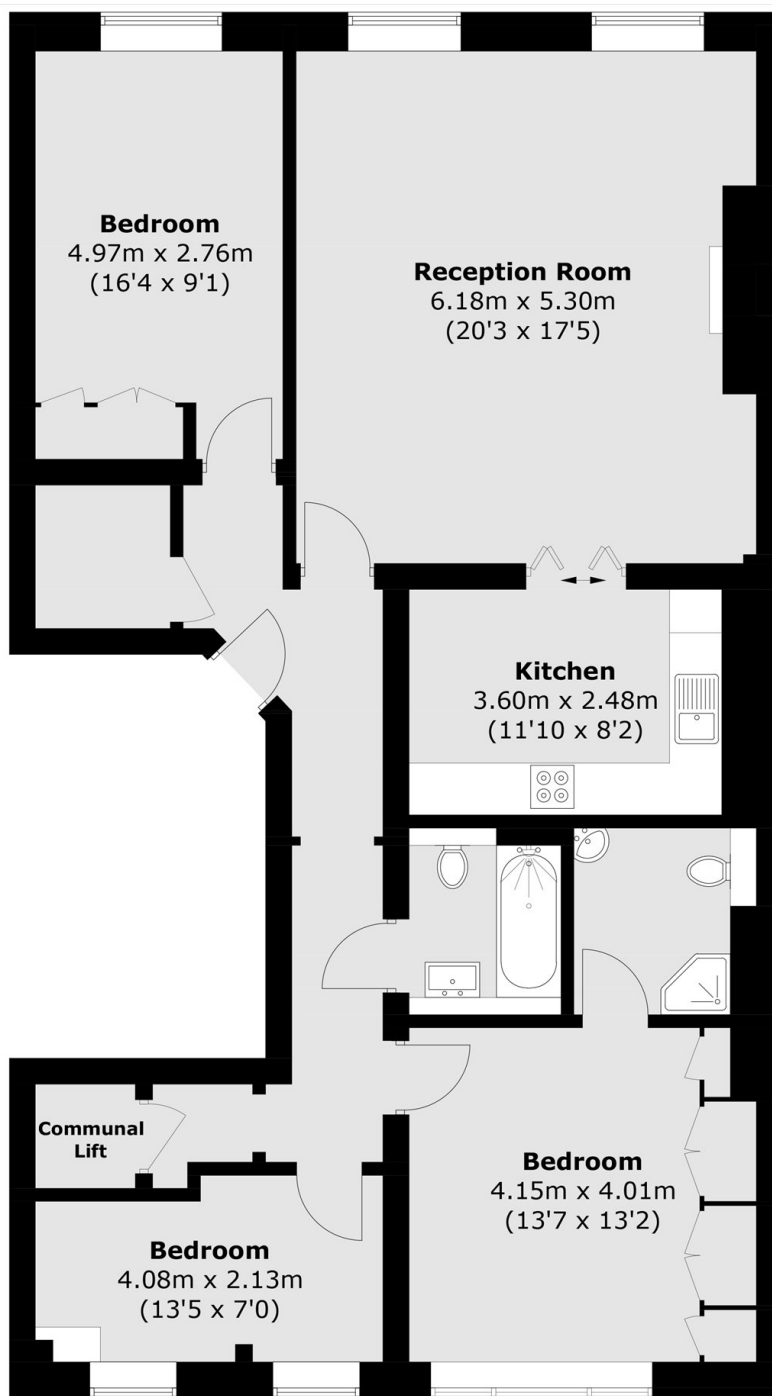
A three bedroom apartment on the second floor of this Georgian building on Great Cumberland Place. The flat has a good sized reception room which leads through to the kitchen, two double bedrooms, a third smaller bedroom and two bathrooms.

Great Cumberland Place is a short walk from the boutique shops, bars and restaurants of Marylebone High Street. Portman Village is just a few streets away; the independent restaurants, cafés and wine bars are popular with locals and tourists alike.

### Features

Second Floor Flat  
Three Bedrooms  
Reception & Kitchen  
Two Bathrooms  
Unfurnished  
The Portman Estate

# Great Cumberland Place, London, W1H



Total area (approx.): 111.2 sq. m (1,196.9 sq. ft)