



## AKERMAN ROAD, SW9

£950,000

Three bedroom house  
End-of-terrace  
Large garden  
Close to transport  
Side access  
No onward chain

@marshandparsons  
marshandparsons.co.uk

MARSH &  
PARSONS

# ABOUT THE PROPERTY

Amassing approximately 1,259 sq ft, this beautifully presented three bedroom Victorian end-of-terrace home is set on the sought after Akerman Road, ideally positioned between the vibrant neighbourhoods of Brixton and Oval. Blending period charm with modern comfort, the property is arranged over two floors and offers generous, light filled living space throughout.

Situated on Akerman Road, residents can enjoy the nearby green open spaces of Myatt's Fields Park, while Brixton, Oval, Stockwell, and Loughborough Junction stations provide excellent transport links across London. A wealth of trendy shops, cafés, bars, and restaurants are all within easy reach, ensuring the best of London living



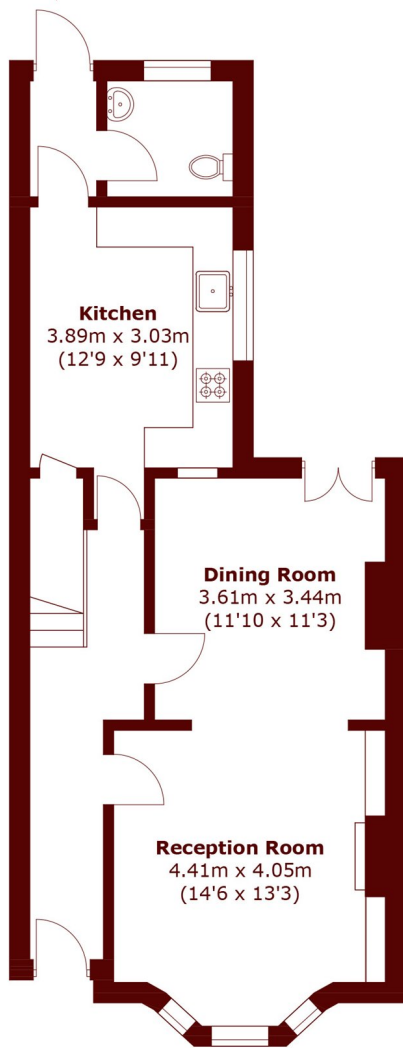




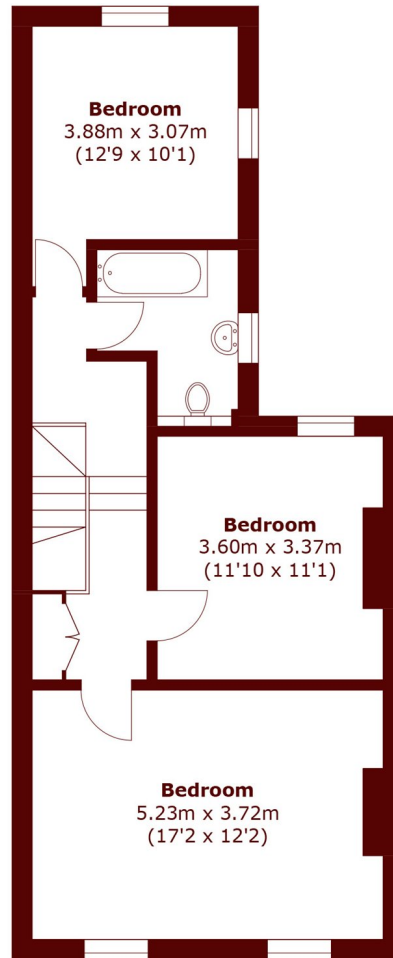


# STEP INSIDE AKERMAN ROAD

To Garden



**Ground Floor**



**First Floor**

Total area (approx.): 117.0 sq. m (1,259.4 sq. ft)

**Kennington**  
020 7587 1533

Energy Rating: C We aim to make our particulars both accurate and reliable. However, they are not guaranteed; nor do they form part of an offer or contract. If you require clarification on any points then please contact us, especially if you're traveling some distance to view. Please note that appliances and heating systems have not been tested and therefore no warranties can be given as to their good working order

**MARSH &  
PARSONS**