



A beautifully presented and spacious three bedroom apartment located on Manor Road in Chigwell which is a short walk to two central line stations, fine restaurants, shops and amenities.

This stunning apartment is positioned on the fourth (top floor) with a lift and stairs to all floors. The secure entrance hall and communal areas to the apartments in Montpellier House are finished to a very high standard.



JOHN THOMA
BESPOKE ESTATE AGENCY
www.johnthoma.co.uk



JOHN THOMA
BESPOKE ESTATE AGENCY
www.johnthoma.co.uk



JOHN THOMA
BESPOKE ESTATE AGENCY
www.johnthoma.co.uk



JOHN THOMA
BESPOKE ESTATE AGENCY
www.johnthoma.co.uk



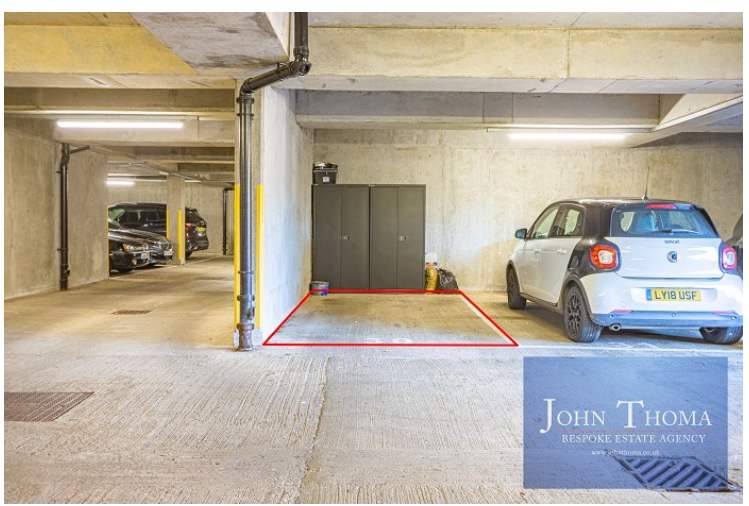
JOHN THOMA
BESPOKE ESTATE AGENCY
www.johnthoma.co.uk



JOHN THOMA
BESPOKE ESTATE AGENCY
www.johnthoma.co.uk

- ◆ THE APARTMENT IS OVER 1,400 SQUARE IN SIZE WITH A SPACIOUS LOUNGE MEASURING 20' 8" x 13' 5" IN SIZE
- ◆ A STUNNING BESPOKE AND FULLY FITTED KITCHEN-BREAKFAST ROOM MEASURING 20' 1" x 10' 7" IN SIZE
- ◆ THE MASTER BEDROOM MEASURES 16' x 13' 5" WITH A WALK-IN WARDROBE AND AMAZING EN-SUITE BATHROOM
- ◆ BEDROOM TWO IS ALSO OF AN EXCELLENT PROPORTION MEASURING 16' 7" x 12' 6" WITH FITTED WARDROBES

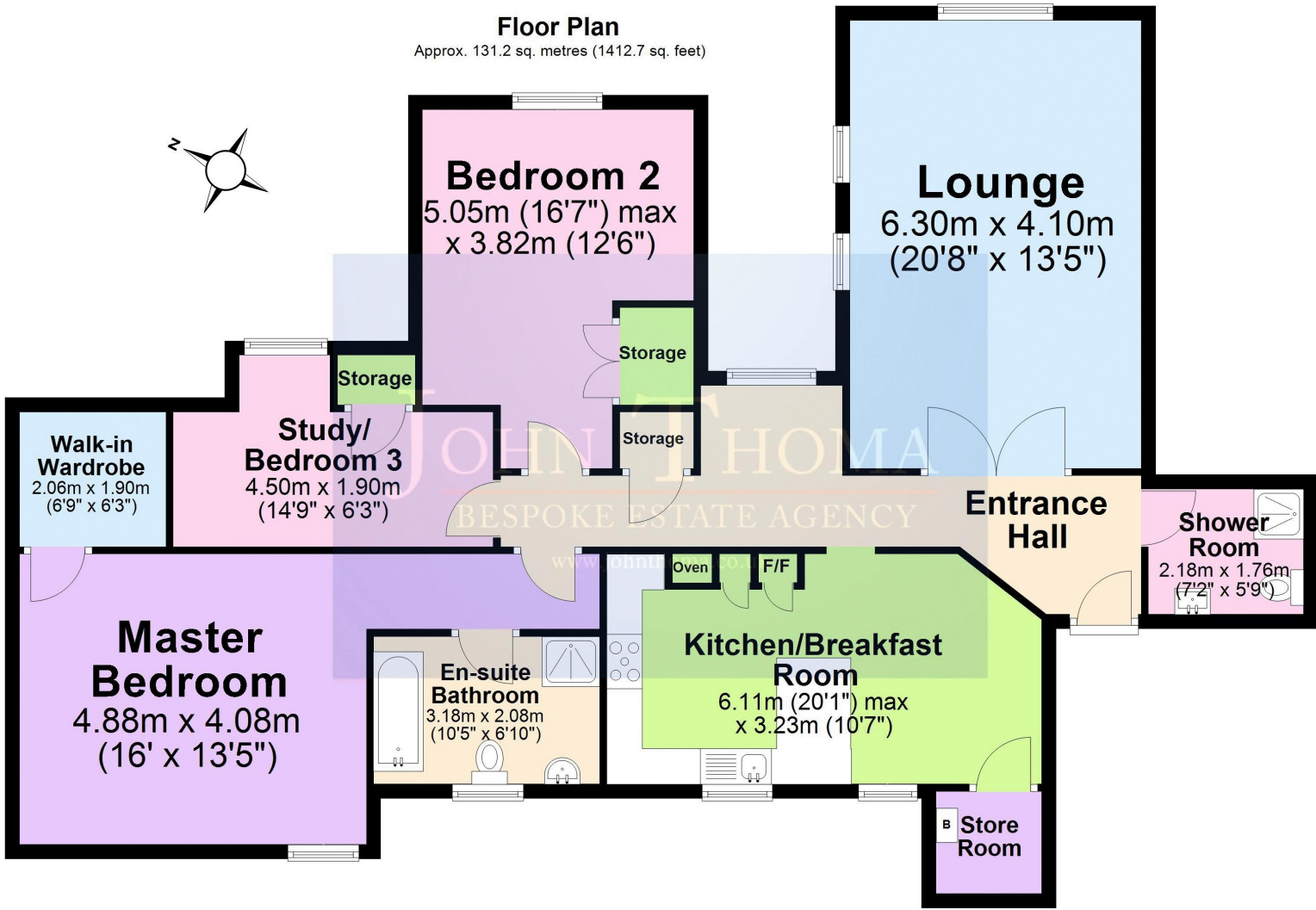
- ◆ THE APARTMENT HAS A THIRD BEDROOM OR STUDY MEASURING 14' 9" x 6' 3" WITH A STORAGE CUPBOARD
- ◆ THERE IS A MODERN SHOWER ROOM AND TWO ALLOCATED PARKING SPACES, ONE IS SECURELY GATED
- ◆ THE APARTMENT HAS BEEN REFURBISHED AND FINISHED TO A VERY HIGH STANDARD THROUGHOUT
- ◆ THERE ARE BEAUTIFULLY LANDSCAPED COMMUNAL GROUNDS FOR THE RESIDENTS AND GUESTS



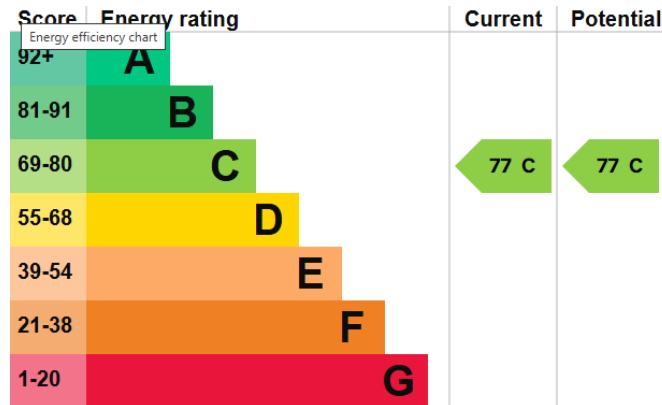
Agent Note: The information provided about this property does not constitute or form part of an offer or contract, nor may it be regarded as representations. All interested parties must verify accuracy and your solicitor must verify tenure/lease information, fixtures & fittings and, where the property has been extended/converted, planning/building regulation consents. All dimensions are approximate and quoted for guidance only as are floor plans which are not to scale and their accuracy cannot be confirmed. Reference to appliances and/or services does not imply that they are necessarily in working order or fit for the purpose.

Floor Plan

Approx. 131.2 sq. metres (1412.7 sq. feet)



Total area: approx. 131.2 sq. metres (1412.7 sq. feet)



[John Thoma Bespoke Estate Agency, Chigwell Branch](#)

The Coach House 201 High Road Chigwell Essex IG7 5BJ
 020 8340 8833 Local call rate