



Price

£950,000

Freehold

5x  3x  2x 

**The Orchards, Primrose
Drive, Ridgewood, East
Sussex, TN22**

cubitt & west
Helping you move forwards



Main features

- New home
- 5 bedrooms
- 2 en-suites
- Utility room
- Lounge with log burner
- Open plan kitchen/dining/family area

Accommodation

GROUND FLOOR

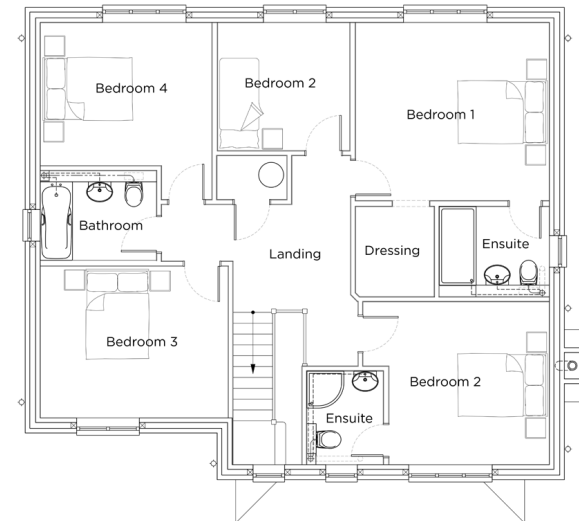
- Entrance hall
- Study: 13'3 x 7'10 (4.04m x 2.39m)
- Lounge: 14'2 x 13'8 (4.32m x 4.17m)
- Kitchen: 14'8 x 11'9 (4.47m x 3.58m)
- Dining Family Room: 21'6 x 16'10 (6.56m x 5.13m)
- Cloakroom
- Utility

FIRST FLOOR

- Landing
- Bedroom 1: 16'7 x 13'9 (5.06m x 4.19m)
- En-suite
- Dressing Room
- Bedroom 2: 11'4 x 10'8 (3.46m x 3.25m)
- En-suite
- Bedroom 3: 13'4 x 10'9 (4.07m x 3.28m)
- Bedroom 4: 12'2 x 10'1 (3.71m x 3.08m)
- Bedroom 5: 9'4 x 8'11 (2.85m x 2.72m)
- Bathroom

OUTSIDE

- Front & Rear Gardens
- Garage & Drive



Call Uckfield - 01825 768915 ■ cubittandwest.co.uk

- If buying to let, the energy rating will need to be improved to at least 'E' rating before you can let the property
- Legal advice should be taken to verify fixtures/fittings, planning, alterations and/or lease details
- Appliances & services are untested, dimensions are approximate and floor plans are not to scale



22824637/20260223/JL/DK