



**5 Roundway, Reabrook, Shrewsbury, SY3 7TG**

3 bedroom end terrace house — £235,000 Freehold

# 5 Roundway, Reabrook, Shrewsbury, SY3 7TG

£235,000 Freehold — 3 bedroom end terrace house

sales@cgpooks.co.uk

Occupying a lovely position with a pleasant outlook, this beautifully presented and extended end of terrace house offers very practical and improved accommodation, with a private landscaped garden and driveway parking.

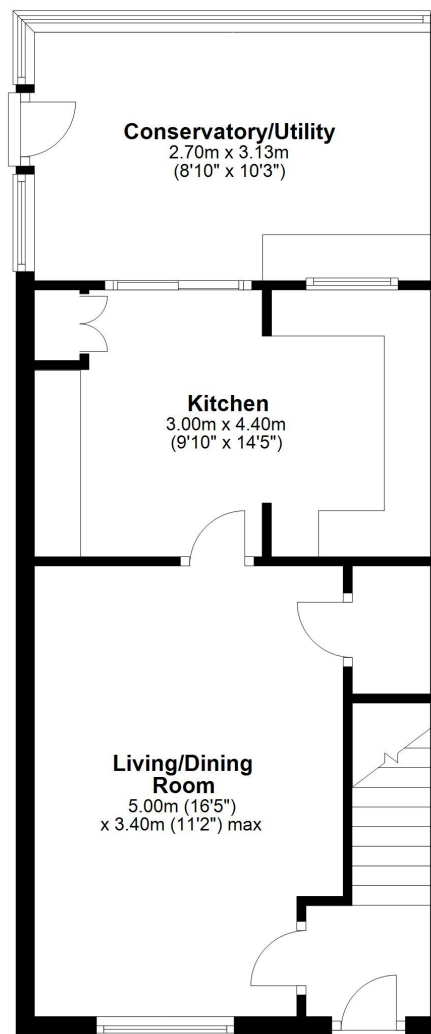
## KEY FEATURES

- Entrance hall opening to a good-sized living/dining room with a large window to front and useful under stairs storage
- Open plan kitchen/breakfast room, complete with a range of fitted units, space for appliances, and breakfast bar
- The versatile conservatory has a very practical utility area, and glazed door onto the garden
- On the first floor are three bedrooms and a well-appointed family bathroom with shower
- uPVC double glazed windows and gas fired central heating
- Private landscaped rear garden, laid to artificial lawn, with a paved sun terrace, planted borders, and a useful timber garden store, as well as gated access to both the side and rear
- Beyond the garden is a driveway providing parking for one car, with space to park another in front
- Quietly and conveniently situated within a very popular residential area, a short walk from some excellent amenities, the Reabrook Valley Nature Reserve, road links via the bypass, and less than two miles from the town centre
- The property has been recently improved by the current owners, with upgrades including new windows and door to the front, updated bathroom suite, fitted utility area, landscaping of the garden, and general decor throughout
- Sold with no upward chain

Coopergreenpooks.co.uk

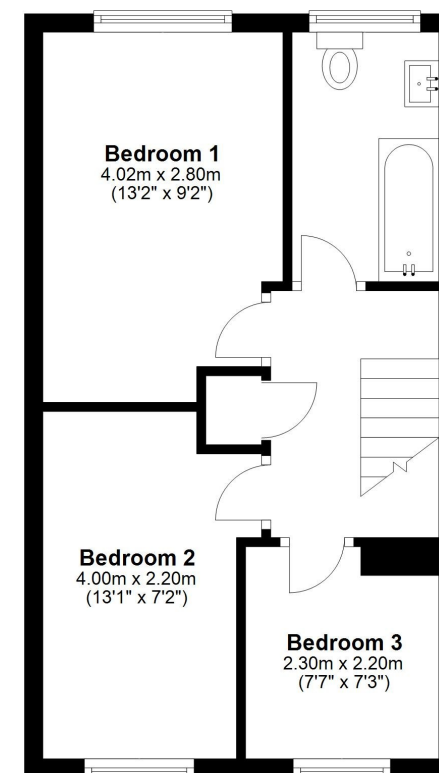
## Ground Floor

Approx. 42.8 sq. metres (461.0 sq. feet)



## First Floor

Approx. 34.0 sq. metres (365.9 sq. feet)



Total area: approx. 76.8 sq. metres (826.9 sq. feet)









# 5 Roundway, Reabrook, Shrewsbury, SY3 7TG

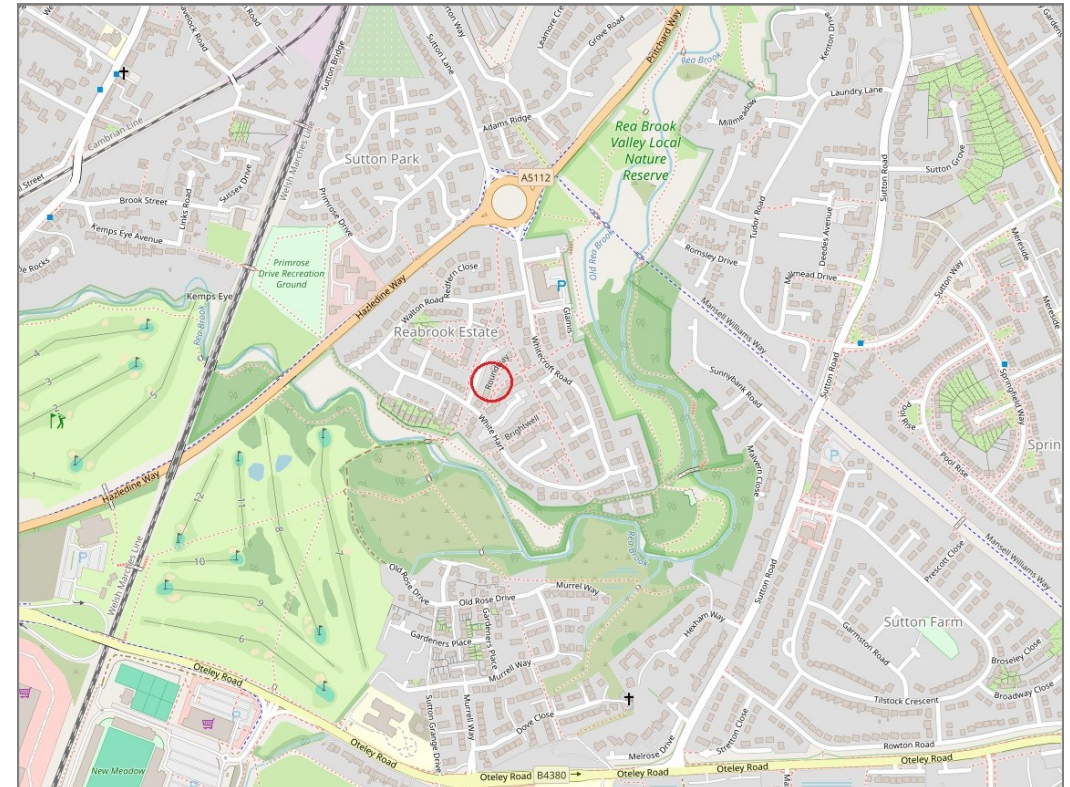
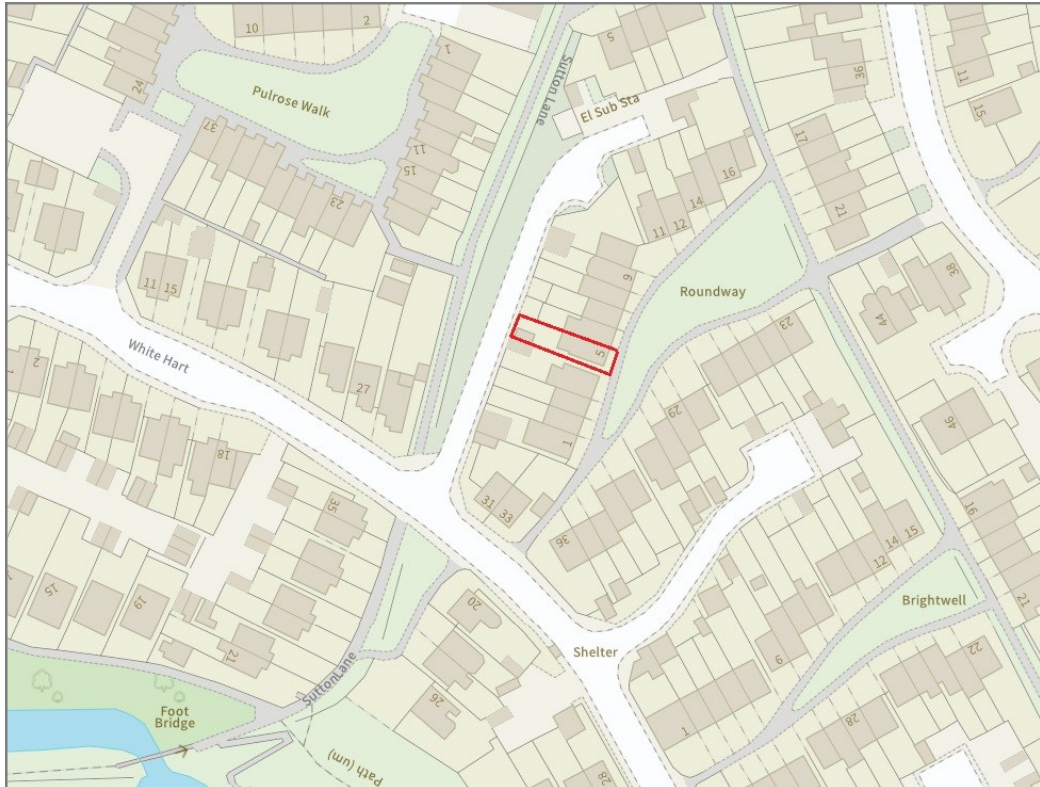
£235,000 Freehold — 3 bedroom end terrace house

sales@cgpooks.co.uk

rightmove 

onTheMarket.com 

 **RICS**  
Regulated by RICS



**BOUNDARIES NOT CONFIRMED**

Tenure	<b>Freehold</b>
Local Authority	<b>Shropshire Council</b>
Council Tax	<b>Band B</b>
EPC Band	<b>Band D</b>
Services	<b>All mains services are connected</b>

 **Expert mortgage advice available**

3 Barker St, Shrewsbury SY1 1QF

**Cooper Green Pooks**  
**01743 276666**



Your home may be repossessed if you do not keep up repayments on your mortgage.

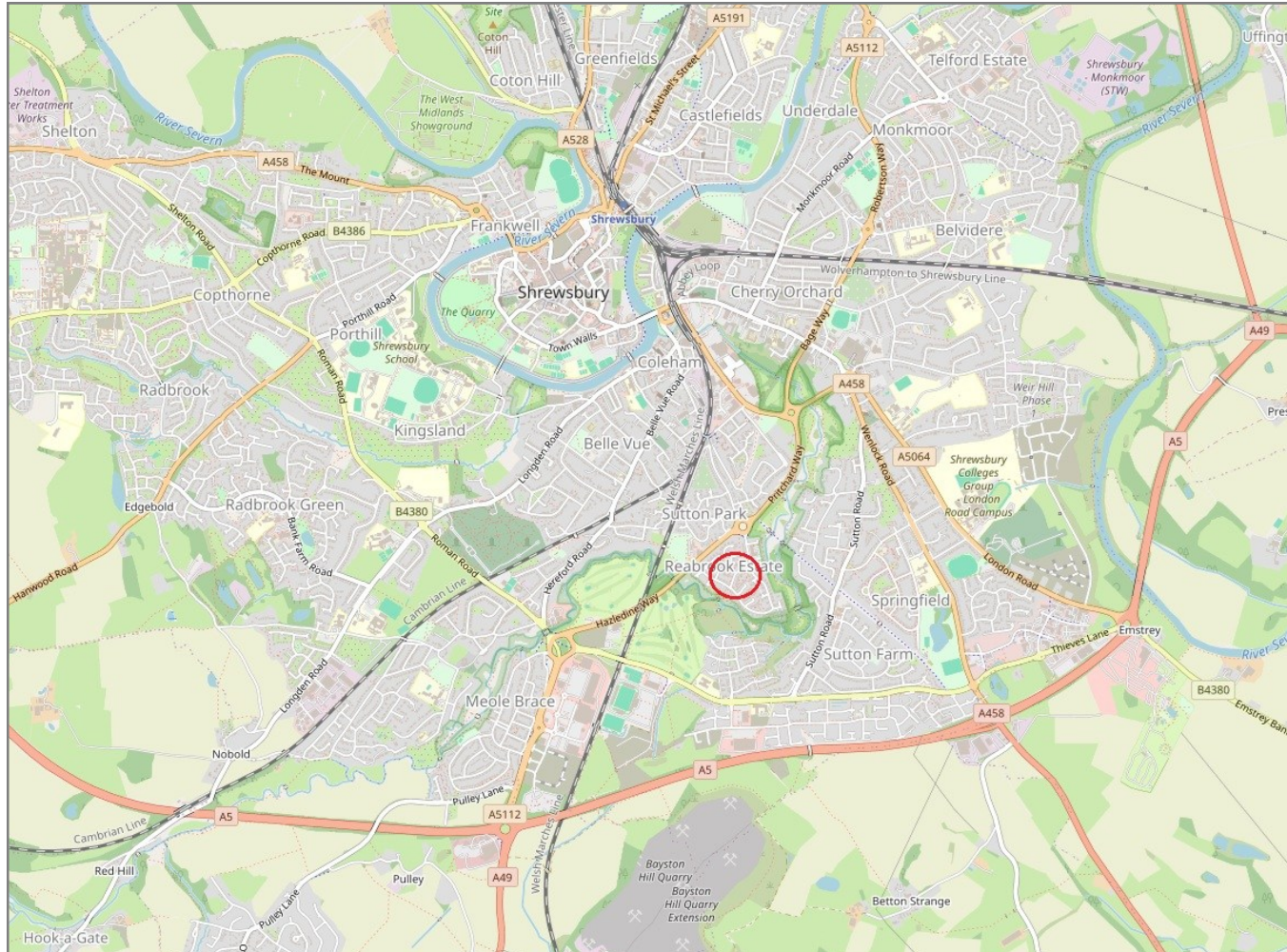
There may be a fee for mortgage advice. The actual amount you pay will depend upon your circumstances. The fee is up to 1% but a typical fee is 0.3% of the amount borrowed.

# 5 Roundway, Reabrook, Shrewsbury, SY3 7TG

Coopergreenpooks.co.uk

£235,000 Freehold — 3 bedroom end terrace house

sales@cgpooks.co.uk



**IMPORTANT NOTICE:** Cooper Green Pooks for themselves and for the lessors or vendors of this property whose agents they are give notice that: 1 No appliances, services or service installations have been tested and no warranty as to suitability or serviceability is implied. Any prospective purchaser or lessee is advised to obtain verification from their surveyor or solicitor. 2. The particulars are set out as a general outline only for the guidance of the intended purchasers or lessees and do not constitute, nor constitute part of, an offer or contract. 3. All descriptions, reference to condition and necessary permissions for use and occupation and other details are given in good faith and are believed to be correct but any intending purchasers or lessees should not rely on them as statements or representation of fact but satisfy themselves by inspection or otherwise as to the correctness of each of them. 4. No person in the employment of Cooper Green Pooks has any authority to make or give any representation or warranty whatsoever in relation to this property. 5. All rentals and prices are quoted exclusive of Stamp Duty, legal and surveyors fees and any other associated purchasers or lessees costs. 6. Floor plans are indicative only and should not be relied on. 7. The plan showing the boundary of the property is indicative only and has not been checked against the legal title so should not be relied on. 8. All dimensions, floor areas and site areas are only approximate and should not be relied on. Dimensions are generally maximum room dimension.