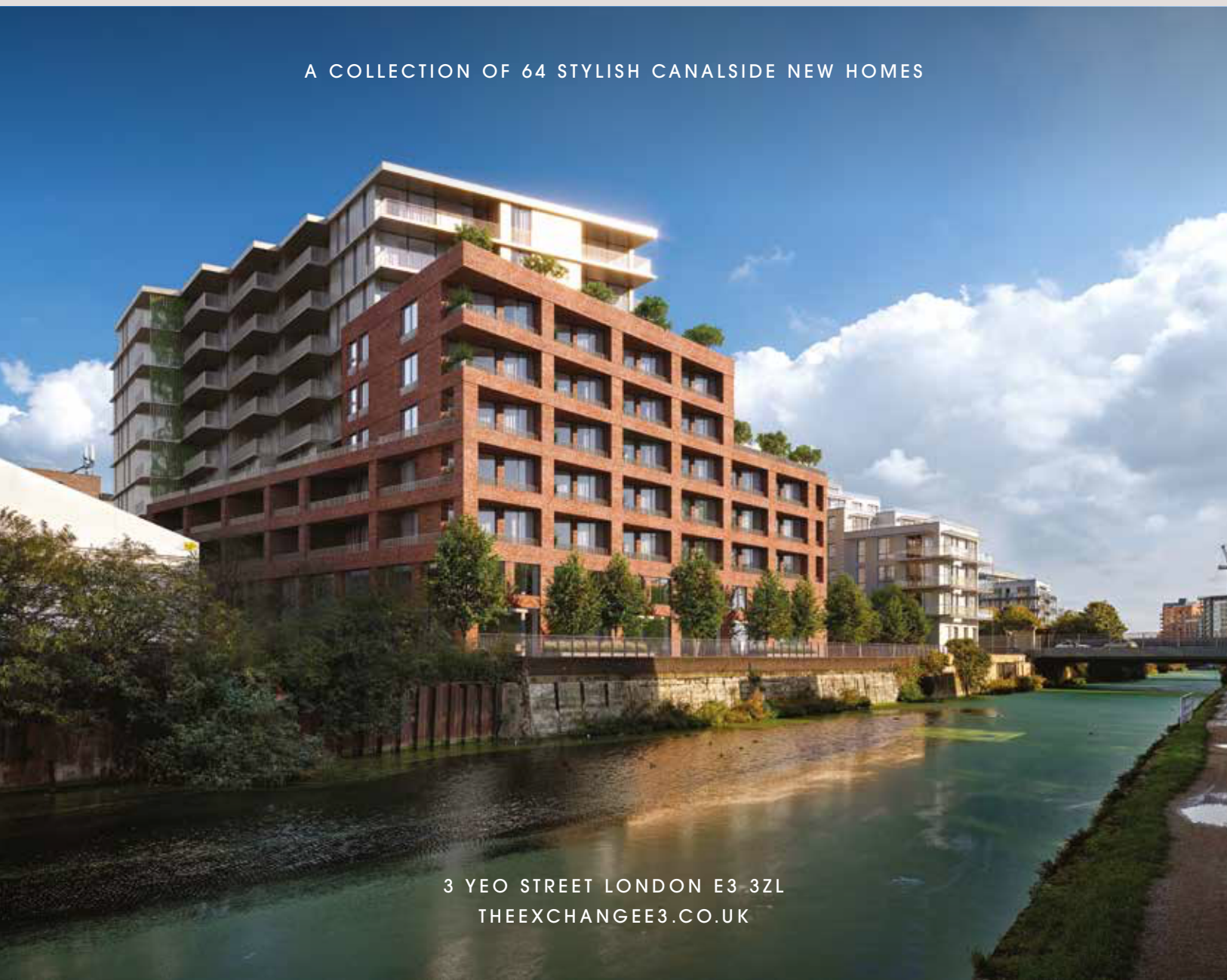




A COLLECTION OF 64 STYLISH CANALSIDE NEW HOMES



3 YEO STREET LONDON E3 3ZL
THEEXCHANGE3.CO.UK



LIVE YOUR LONDON LIFE
ON THE EDGE OF TRANQUILLITY

State-of-the-art
urban waterside
living on the edge
of the capital's
oldest canal

3 YEO STREET LONDON E3 3ZL
THEEXCHANGE3.CO.UK

Buying with Us

The developer’s in-house sales team provide a personalised buying experience combining years of expertise with first-hand knowledge of the development.

DOMINUS NEW HOMES

Dominus New Homes has completed many successful and popular new build and conversion schemes in London and the home counties over the past 15 years. It has constructed over 800 residential properties and are continuously working to provide stylish homes for buyers. A selection of recently completed projects by Dominus New Homes is listed here.

EXPERIENCE

The sales team has over 20 years’ combined experience of the London new homes property market, with a wealth of expertise which will make buying your new home a smooth process.

KNOWLEDGE

With first-hand knowledge of the development, from the site being acquired through to the final finishes, the sales team will be able to assist you with any query you may have, no matter how big or small.

AFTERCARE

Your new home comes with a 10-year building warranty from the date the building is completed, with a dedicated aftercare team for the developer defect warranty period.*

*Refer to your policy hand book

020 3967 7567
enquiries@theexchangee3.co.uk
DOMINUSNEWHOMES.CO.UK



Disclaimer: While reasonable effort has been made to ensure the accuracy of this document and the information contained within, this cannot be guaranteed and no representation or warranty is made in that regard and all such representations and warranties (whether express, implied or otherwise) are excluded to the extent permitted by law. The specification included herein is the anticipated specification as at the date of this brochure and is designed specifically as a guide and we reserve the right to amend the specification where necessary or desirable and without notice. Computer generated images are indicative of the quality and style of the development and are not intended to represent fully accurate depictions. Apartment and amenity designs, sizes, layouts and other details are indicative only and may be subject to change. Any areas, measurements or distances shown in any text or plan are indicative and for information purposes only and may be different once actually constructed. Any reference to use of the property does not mean that any necessary planning, building regulations or other consent has been obtained. Variances occur between apartment types. Please refer to the sales team for details of a particular apartment. A management company will be appointed to provide building management services. Please note that the design of this development is ongoing and certain items of the specification may be amended to an item of equivalent quality without notice. Plans are not to scale. All measurements are approximate. All furniture and planting is shown for context only, not supplied with the apartment. Prices are subject to change without notice.

OUR DEVELOPMENTS INCLUDE:

The Icon Wood Green N22
A stylish collection of 99 studios, one, two and three bedroom apartments and penthouses.

The Woodcote & Garden Square KT18
A collection of 98 luxury homes within and surrounding a Grade II listed Georgian manor house.

The Wallis E9
39 new apartments and penthouses located in the heart of one of London’s coolest neighbourhoods, Hackney Wick.

Earlsfield Place SW18
A stylish collection of 117 studio, 1, 2 and 3 bedroom apartments and six 3 bedroom freehold houses in Earlsfield, South London.

Smithfield Yard N8
48 boutique apartments creating its own North London community.

Lansbury Lofts E3
A 1930s conversion of 16 apartments in the heart of the Tredegar Square Conservation Area.

Hatcham Works SE14
Beautifully restored Victorian warehouses in the Hatcham Park Conservation Area, comprising 6 houses and 10 apartments.

Walworth Collection SE1
A collection of 73 beautifully appointed apartments in London’s vibrant Elephant and Castle.

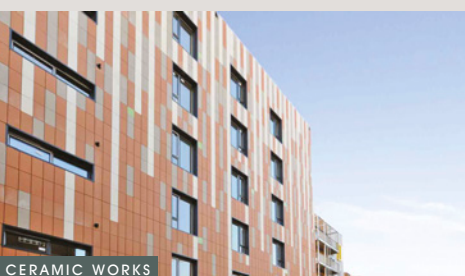
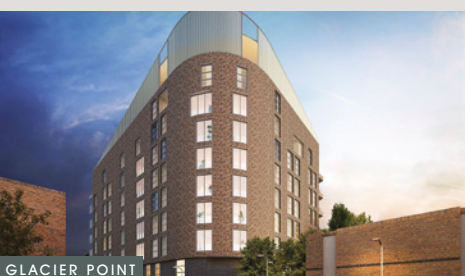
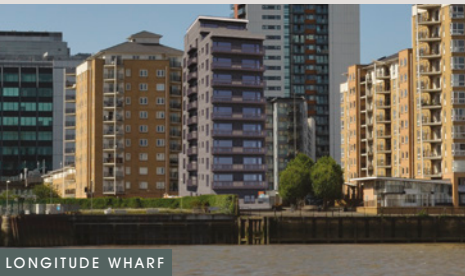
Luxe Tower & Eastlight Apartments E1
A lovingly curated collection of 89 homes in the heart of London’s vibrant E1.

Glacier Point E2
64 incredible new properties in a landmark development in the heart of Bethnal Green.

Longitude Wharf: Prime Meridian Walk E14
23 spectacular apartments overlooking the River Thames.

Chapel Ford Lofts E3
14 lofts, hewn from a former factory, with stunning architecture and original features.

Ceramic Works E9
An iconic development of 52 new homes in the heart of Hackney.



Welcome



Set along the banks of the Limehouse Cut, part of London's historic waterways, the Exchange E3 is a visionary development at the very heart of London's East End.

The City is just to the west and Stratford and Canary Wharf to the north and south respectively. But this 'Green Lung' of the East End is replete with picturesque parks and woodland adventures, with waterside wanderings on your doorstep.

East London has been growing in stature and confidence since the London 2012 Olympics. With developments in infrastructure and cultural diffusion across the region, as well as a strong sense of community, E3 has become an attractive postcode to set up home.

Vibrant and revamped Tower Hamlets boasts the highest job growth in the country, which has created a local buzz giving rise to more housing, businesses, shops, restaurants, galleries, and clubs than ever before.

As they say locally: "You're minutes from the City; seconds from the water." At the The Exchange E3, you're connected to the world's greatest city thanks to world class transport links and you're in touch with the world via London City Airport (a 15 minute ride away). Canary Wharf is just a 6 minute hop on the DLR.

to Bow

EDUCATION

In addition to the many nearby well-regarded educational facilities, the East London Arts and Music college is close by, breaking new ground for studying games design, music, film and television. There are three secondary schools located within easy access of the development, which makes your only quandary one of choice.

The local non-selective secondary comprehensive, Bow School, is rated good by Ofsted, and St Paul’s Way Trust is considered outstanding. The local primary Gainsborough School is good while the Mossbourne Riverside Primary Academy, St Agnes Catholic Primary School and the Old Palace Primary on St Leonards Street are all graded as outstanding.

- Mossbourne Riverside Primary Academy
- St Paul’s Way Trust
- St Agnes Catholic Primary School
- Old Palace Primary School
- Bow School
- Gainsborough School
- Bobby Moore Academy
- Cardinal Pole Catholic School
- The Urswick School

GREAT SHOPPING IS JUST A FEW STOPS AWAY

It’s easy to go up West, or to save yourself time, go North to Westfield Stratford – one of the greatest shopping emporiums in Europe with 244 stores all mingling under the same roof, just 10 minutes away. There you’ll find everything from Arabian Oud and All Saints to Zara and Zenergii. Fine dining, luxury bowling and cocktails at the All Star Lanes – these are just some of the added extracurricular distractions that will make shopping a treat.

TOP TABLES

The best international cuisine is well within range, whether it’s the inspired Indian dishes of the Shukran Gourmet, or the Michelin-starred Noodle Street at Docklands just 20 minutes away.

A bike ride along the Capital Ring will take you to some of London’s most exciting eating establishments in the arty enclave of Hackney Wick, home to the annual Hackney Wicked festival. Plate-sharing perfection from Chef Tom Brown can be had at Cornerstone and delectable dishes galore are available at the Hackney PEARL. Or lap up an American dining experience at The Breakfast Club, set alongside the “Hackney Riviera” aka the River Lea. Nearby, Stour Space Café & Bar sources seasonal and local ingredients while making exquisite cocktails and speciality grade coffee. There is also the world’s oldest salmon smokers – Forman & Son – which boasts an art gallery and knockout views of the Olympic Park from its terrace and outdoor riverside lounge.

- Salento Restaurant
- Shukran Gourmet
- Noodle Street
- Cornerstone
- PEARL Hackney Wick
- Scoffs Grill
- Formans Restaurant
- The Breakfast Club



FASTER HIGHER STRONGER

One of the legacies of London 2012 is a fitter, happier locality, with a range of outlets to keep you in shape, even if you’re not aiming to win a medal at the next Olympic Games. You can have your pick of places to take a dip within a two mile radius, whether it’s the London Aquatic Centre at the Queen Elizabeth Olympic Park or the Poplar Baths and Leisure Centre – with added gym, classes, studios and football pitches.

Another legacy of the Olympics is Premier League Football: West Ham United are now the occupants at the historic London Stadium. Just an easy walk away for the Happy Hammer in your household.

- Poplar Baths and Leisure Centre
- Mile End Park Leisure Centre
- PureGym
- London Aquatic Centre
- Bow Yoga
- The London Stadium
- York Hall, Old Ford Road
- Tennis at Victoria Park



LIMEHOUSE CUT ▶

The Limehouse Cut was the first navigable canal to be dug in London. Today the towpath provides a pleasant and alluring walkway through a cool, urban setting.

◀ WHITECHAPEL GALLERY

The Whitechapel Gallery is a welcoming and intimate space. The art gallery, founded in 1961, focuses on visual art collections which are aimed at providing stimulation as much as appreciation.

◀ WEST INDIA QUAY

This historic warehouse in the London Docklands was once used to store imported goods and its now a Grade I listed building. The area features a cinema, hotel and several restaurants facing the water for al fresco dining.

Whether it’s a morning stroll along the Limehouse Cut, a picnic in Victoria Park, or a night out at a local brewery, you can find the perfect spot for any occasion within walking or cycling distance.



URBAN OUTDOORS

Wildlife and work converge happily at The Exchange E3, meaning you get the best of both worlds. There are parks in every direction and different waterways intersect in the heart of East London: the Bow Creek, the River Lea and the Limehouse Cut – known collectively as The Three Rivers – meet just a walk away from your front door. You can also wander down to the Limehouse Basin, home to a marina full of vessels of all shapes and sizes.

Access to green space is quick and easy. The local Bartlett Park is ten minutes away on foot and boasts football pitches, an outdoor gym, play areas and changing rooms, while the Queen Elizabeth Olympic Park, with its Olympic and Paralympic Games venues, café, boat tour and ArcelorMittal Orbit ride, is a great place to visit or take guests. Or how about capping off a trip to Canary Wharf Shopping Centre with a tour of the impressive Crossrail Place Roof Garden with all its exotic plant life and colour.

- Bartlett Park
- Tower Hamlet Cemetery Park
- Crossrail Place Roof Garden
- Queen Elizabeth Olympic Park
- Victoria Park
- Hackney Marshes



COLUMBIA ROAD FLOWER MARKET ▲

CULTURAL CAPITAL

Whether it's history, heritage or art you seek, this local London village has it all, from the phantasmagoria of Dennis Severs' House on Folgate Street and the Young V&A, formerly the Museum of Childhood. Then there's the low key, cutting edge art of the Trinity Gallery, the high drama of the Tower of London, and the engineering magnificence of the Brunel Museum, all just a bus or bike ride away.

Entertainment and leisure are also at your disposal, whether it's a trip to the O2 for a gig, an amble by the waterside at St Katharine Docks Marina or a stroll up to the Observatory in Greenwich for some schooling in astronomy and navigation. Or if it's cultural cachet you're after then a visit to Rich Mix, a converted leather factory at the top of Brick Lane, which offers a diverse independent cinema on three screens with multiple performance spaces for exotic, unforgettable nights.

- Museum of London Docklands
- Trinity Gallery
- Chisenhale Gallery
- Whitechapel Gallery
- Brunel Museum
- Dennis Severs' House
- Young V&A
- The O2
- St Katharine Docks Marina
- Greenwich Observatory
- Rich Mix Cinema

DRINKS LOCALLY

You will be able to enjoy the famous East End pub experience at your local, whether you choose the wrought iron bar and workbenches of the Galvanisers Union, or stone baked pizzas and London Pride at the Morgan Arms, within earshot of St. Mary-le-Bow. The Grapes runs regular quiz nights, sometimes hosted by its owner Sir Ian McKellen.

- The Grapes
- The Wentworth Arms
- Galvanisers Union
- Morgan Arms
- Rusty Bike Pub Mile End
- Slug & Lettuce
- The Crown

MARKET REPORT

East London has always had a reputation for thriving markets for bargain hunters or fashionistas and that's still the case. Food and Farmers markets are also commonplace, from Roman Road to Broadway Market. Fortuitously, Crisp Street Market, with eighty stalls, adjacent pubs and outlets serving up pie and mash and Chinese and Indian cuisine, is just 10 minutes away on foot and open six days a week.

- Crisp Street Market
- Broadway Market
- Brick Lane
- Spitalfields
- Roman Road
- Columbia Road Flower Market

Wildlife and work converge happily at The Exchange E3. You get the best of both worlds, access to green space and the tranquillity of the waterway is always quick and easy.



VICTORIA PARK ►

Locally known as 'Vicky Park', Victoria Park is the largest park in Tower Hamlets and one of London's most visited green spaces with approximately 9 million visitors every year. The park spans over 86 hectares and is just 15 minutes from The Exchange E3.



From A ————— to E3

London's sprawling variety is laid out before you with all its opportunity a mere tube ride away.

3 YEO STREET, LONDON E3 3ZL

Devons Road Station, with mainline and DLR services, is six minutes on foot from the The Exchange E3. The 108 bus route which runs from Stratford International to Lewisham is accessible close by on Cranwell Close.

Bromley-By-Bow Station, Mile End and the Langdon Park DLR are all within walking distance.



Average journey times sourced from City Mapper, TFL & Google maps
Public Transport times are station to station

On Foot

TESCO EXPRESS
2 mins

DEVONS ROAD STATION
DLR
6 mins

LANGDON PARK STATION
DLR
8 mins

E5 POPLAR BAKEHOUSE
9 mins

CHRISP STREET MARKET
12 mins

BROMLEY-BY-BOW STATION
District, Hammersmith & City
14 mins

LIDL
15 mins

Car Clubs

CAR CLUB
London has a huge car hire app network many of which have locations close by, including Zip Car, Ubeeqo, Enterprise, Hertz, and Sixt. To find out more, please visit their website.* (See footnote)

ZIP CAR
3 mins walk

UBEEQO
13 mins walk

ENTERPRISE
20 mins walk

Car Clubs subject to change

*towerhamlets.gov.uk/ignl/transport_and_streets/Parking/car_clubs

By Bicycle

BARTLETT PARK
4 mins

TESCO SUPERSTORE
9 mins

QUEEN ELIZABETH OLYMPIC PARK
11 mins

CANARY WHARF STATION
11 mins

VICTORIA PARK
16 mins

WHITECHAPEL GALLERY
16 mins

BRICK LANE
17 mins

SPITALFIELDS MARKET
18 mins

Parking

LOCAL PARKING
[Yourparkingspace.co.uk](https://yourparkingspace.co.uk), Three Mill Lane, London E3 3AF

ELECTRIC VEHICLE PARKING
PodPoint Charging Station, Hancock Road, London E3 3DA

PRIVATE PARKING
Stratford Multi-Storey Car Park, Service Route No 1, London E15 1XE
6 mins from Devons Road

Public Transport

CANARY WHARF STATION
7 mins from Devons Road

STRATFORD INTERNATIONAL
8 mins from Devons Road

WESTFIELD STRATFORD CITY
Shopping Centre
8 mins from Devons Road

BANK STATION
11 mins from Devons Road

LONDON CITY AIRPORT
14 mins from Devons Road

LIVERPOOL STREET STATION
19 mins from Devons Road

ST PANCRAS INTERNATIONAL
23 mins from Devons Road

BOND STREET
25 mins from Devons Road



64 Stylish New Homes

Here are just a few things
you will love about your
new home.

- Tranquil setting
- Canal views*
- Private balconies
- Chic bathrooms
- Fitted wardrobes
- Stylish Betty Holland Kitchens
- Bosch integrated appliances
- Quartz kitchen worktops
- Kone access control system

Located just a few miles from both the City of London and Canary Wharf, The Exchange E3 is an exciting place in which to live. Situated in the ever popular and vibrant East London, you're perfectly located for work and play.

Architecturally designed with style and comfort in mind, every new home has been built with attention to detail, to create an elegant home with an enviable finish and specification throughout.

The development includes a stunning landscaped atrium for residents and is within easy reach of Langdon Park and Devons Road stations. The DLR provides easy access to the surrounding areas of Canary Wharf, the City, Docklands, Shoreditch and beyond.

This unique collection of one, two, three and four bedroom apartments nestles alongside the Limehouse Cut canal, with views of tranquil water through large windows from many apartments.

*Canal views from some apartments



CGIs are illustrative and may be subject to changes.

Carefully curated to form a perfect blend of style and comfort, with a harmonious tactile palette of quality materials.



CGIs are illustrative and may be subject to changes.





CGIs are illustrative and may be subject to changes.





CGIs are illustrative and may be subject to changes.

The apartments have a contemporary bespoke interior and include integrated appliances, stone worktops, chic bathrooms and stylish kitchens, all handpicked to create a home that you will love returning to at the end of each day.

The Exchange E3 is situated on Yeo Street in an area of East London that has enjoyed a cultural Renaissance over recent years. With its easy access to Canary Wharf and the City, and an influx of cafés and restaurants, it has become a popular area for young professionals and families, who've been steadily moving into the area in their droves.





CGIs are illustrative and may be subject to changes.



The Luxury of Life

The Exchange E3 offers a carefully curated stylish specification.



CGIs are illustrative and may be subject to changes.

KITCHENS

Kitchens expertly designed by the Betty Holland team, exceptional quality Italian kitchens with integrated appliances including:

- Induction hob
- Oven
- Fridge/freezer
- Dishwasher
- Washer/dryer
- Microwave where applicable
- Extractor with carbon filters
- LED lights under cabinets
- Quartz worktop

BEDROOMS

- Fitted wardrobes with shelf and hanging rail to master bedroom and second bedroom where applicable

BATHROOMS & EN SUITES

- Bathroom suites with black taps and mixers
- Bath with glazed screen and thermostatic mixer shower
- Shower enclosure to en suites
- Mirrored vanity cabinet unit above sink in main bathroom
- Wall mounted vanity units are fitted in the en suites with a wall hung mirror above
- Heated towel rail
- Contemporary tiling
- Low voltage, two pin power outlets (shavers/toothbrush charging)

FLOOR FINISHES

- Tiled floor finish in bathroom and en suite
- Engineered wood flooring in living rooms, hallways, kitchens and bedrooms

PAINT FINISHES

- Walls in matt emulsion, brilliant white
- Ceilings in matt emulsion, brilliant white
- Skirting and architraves in eggshell, pure brilliant white

INTERNAL DOORS

- Panel doors painted eggshell, pure brilliant white
- Matt black handles

INTERNAL GENERAL

- Screwless double power sockets
- Screwless flat plate light switch
- Telephone outlet sockets
- Connection points ready for Sky Q/BT/Terrestrial TV
- Spot lighting throughout with feature lights, where applicable

HEATING

- All apartments feature vertical column radiators.
- Heating and hot water are provided by a dedicated communal, energy efficient, heating system*

*Heat interface units are installed in each property and their usage is metered by a data logger, so you will only be billed for the hot water or heating you use. Vertical radiators with thermostatic valves and thermostat controls are installed in each property. Your managing agent will source the most cost effective gas supplier.

**From when the building is completed

FLATS EXTERNAL

- Private balcony, where applicable
- Lighting on balconies, where applicable

MAIN ENTRANCE AND COMMON AREAS

- Communal lighting with movement sensors
- Secure cycle storage
- Refuse storage

SECURITY

- KONE Access control entry system to each apartment
- CCTV system covering main entrance
- Fire doors
- Fully integrated smoke alarms and heat detectors to all apartments

BUILDING STANDARDS AND WARRANTY

- 10-year building warranty**
- Lease length 999 years

Disclaimer: All details contained within this sales information are correct at the time of production. However, in the interest of continuous improvement and to meet market conditions the developer reserves the right to modify plans, exteriors, specifications, and products without notice or obligation. Actual usable floor space may vary from the stated floor area. Any CGIs depicted are an artist's concept of the completed building and/or its interiors only. The content contained within these particulars may not be current and can be changed at any time without notice.

Floor Plans

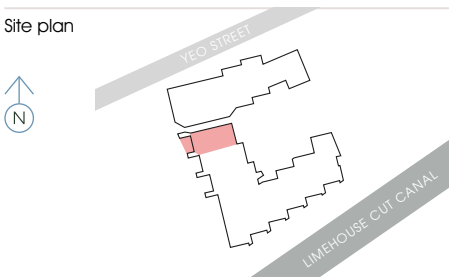
ONE BEDROOM APARTMENTS	13
TWO BEDROOM APARTMENTS	41
THREE BEDROOM APARTMENTS	9
FOUR BEDROOM APARTMENT	1



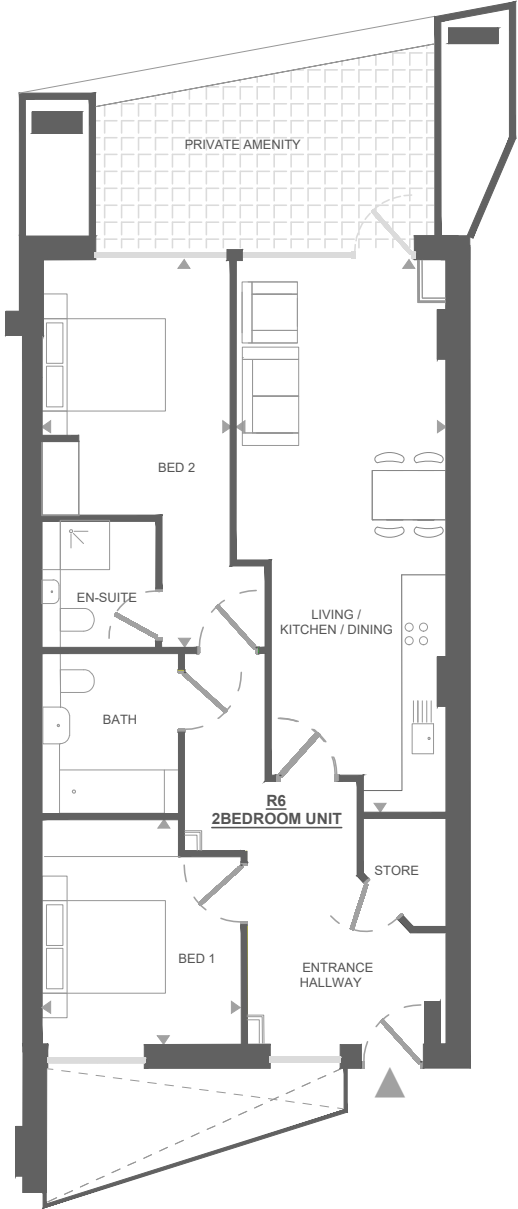
CGIs are illustrative and may be subject to changes.



Apartment R6
Core B
First Floor
82.7 sqm / 890 sqft
2 Bedrooms
2 Bathrooms
Terrace



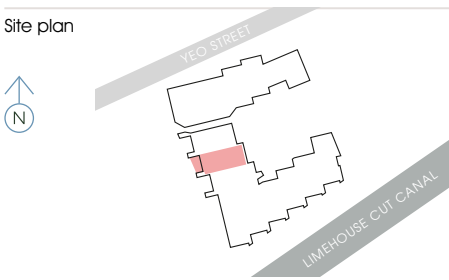
Kitchen/Living/Dining	3.4 × 9.0 m
Bedroom 1	3.2 × 3.6 m
Bedroom 2	3.0 × 6.3 m
Total	82.7 sqm
	890 sqft
Outside space	13.5 sqm
	145 sqft



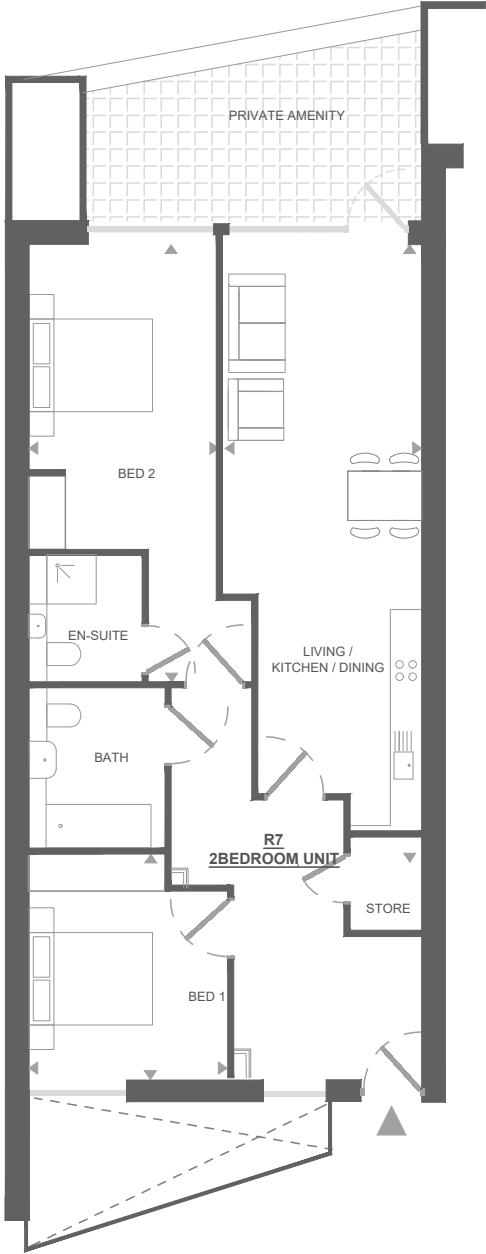
All measurements are approximate and are taken at maximum widths and lengths of rooms. Plans are drawn to scale at a design phase and may vary during build. Kitchens and wardrobes sizes and layouts may differ to those shown. Furniture layouts are indicative only (where they appear). All total sqft and sqm are gross measurements. Window styles and positions may vary. Floorplans are not to scale.



Apartment R7
Core B
First Floor
86.6 sqm / 932 sqft
2 Bedrooms
2 Bathrooms
Terrace



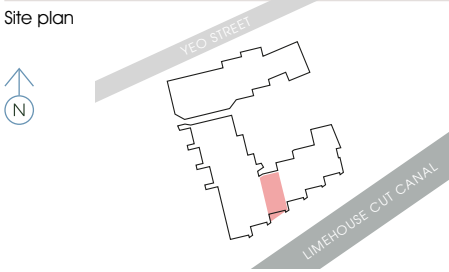
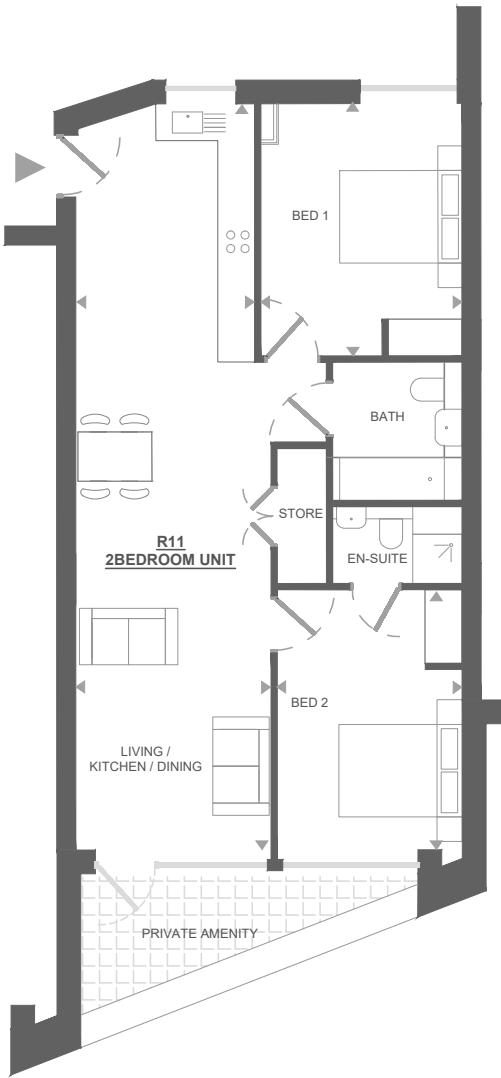
Kitchen/Living/Dining	3.3 × 9.5 m
Bedroom 1	3.2 × 3.6 m
Bedroom 2	3.1 × 7.1 m
Total	86.6 sqm
	932 sqft
Outside space	13.5 sqm
	145 sqft



All measurements are approximate and are taken at maximum widths and lengths of rooms. Plans are drawn to scale at a design phase and may vary during build. Kitchens and wardrobes sizes and layouts may differ to those shown. Furniture layouts are indicative only (where they appear). All total sqft and sqm are gross measurements. Window styles and positions may vary. Floorplans are not to scale.



Apartment R11
Core B
First Floor
75 sqm / 807 sqft
2 Bedrooms
2 Bathrooms
Terrace

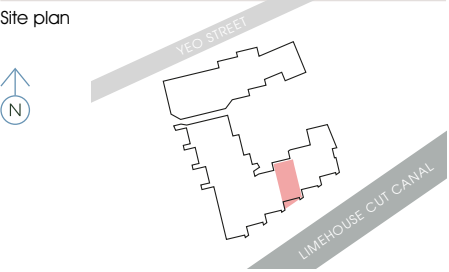
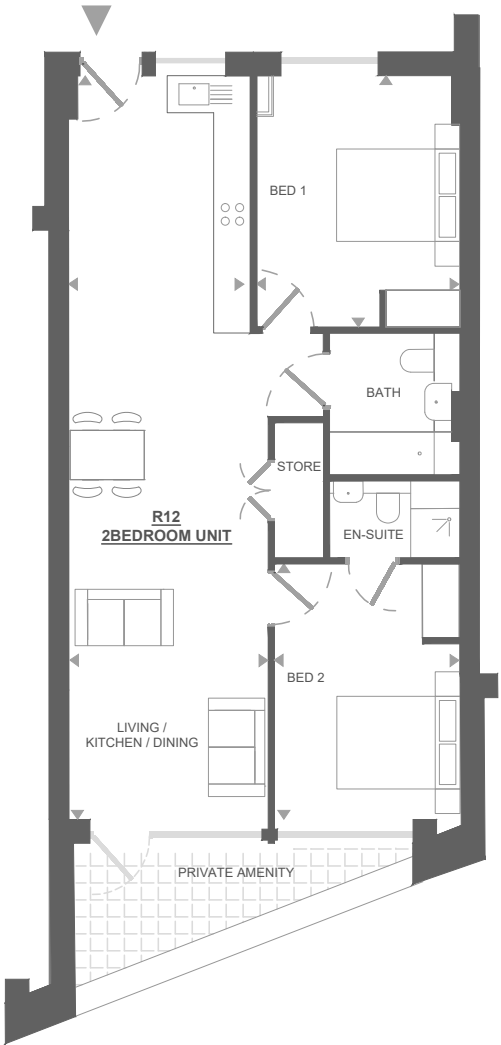


Kitchen/Living/Dining	3.2 × 12.1 m
Bedroom 1	3.3 × 4.1 m
Bedroom 2	3.0 × 4.2 m
Total	75 sqm
	807 sqft
Outside space	7 sqm
	75 sqft

All measurements are approximate and are taken at maximum widths and lengths of rooms. Plans are drawn to scale at a design phase and may vary during build. Kitchens and wardrobes sizes and layouts may differ to those shown. Furniture layouts are indicative only (where they appear). All total sqft and sqm are gross measurements. Window styles and positions may vary. Floorplans are not to scale.



Apartment R12
Core B
First Floor
76.5 sqm / 823 sqft
2 Bedrooms
2 Bathrooms
Terrace

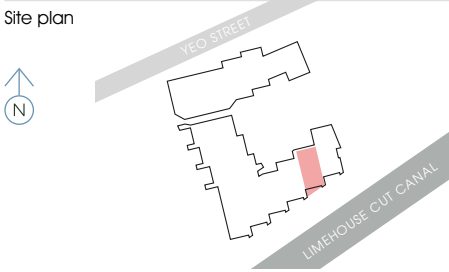
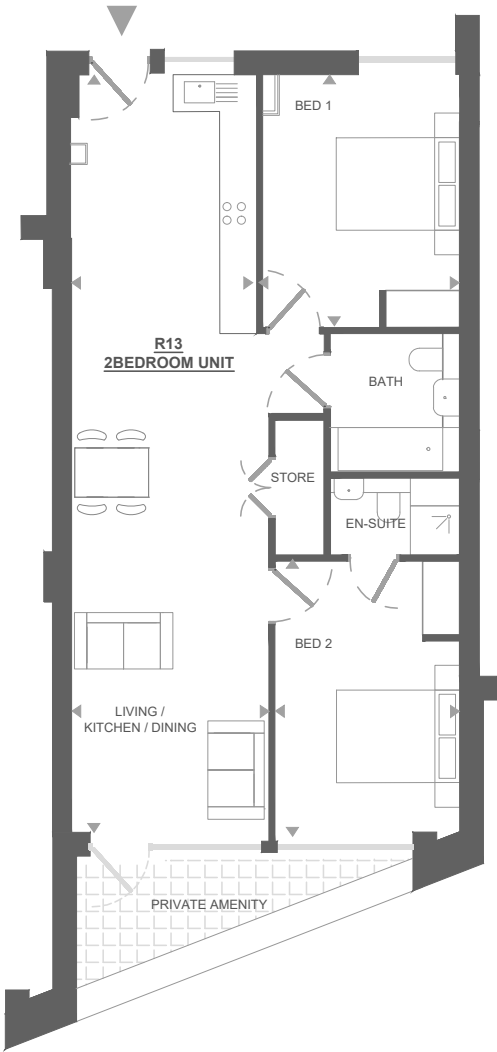


Kitchen/Living/Dining	3.2 × 12.1 m
Bedroom 1	3.3 × 4.1 m
Bedroom 2	3.0 × 4.1 m
Total	76.5 sqm
	823 sqft
Outside space	7 sqm
	75 sqft

All measurements are approximate and are taken at maximum widths and lengths of rooms. Plans are drawn to scale at a design phase and may vary during build. Kitchens and wardrobes sizes and layouts may differ to those shown. Furniture layouts are indicative only (where they appear). All total sqft and sqm are gross measurements. Window styles and positions may vary. Floorplans are not to scale.



Apartment R13
Core B
First Floor
77 sqm / 829 sqft
2 Bedrooms
2 Bathrooms
Terrace

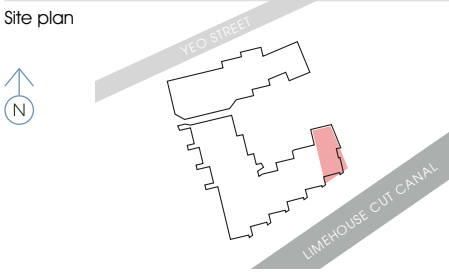
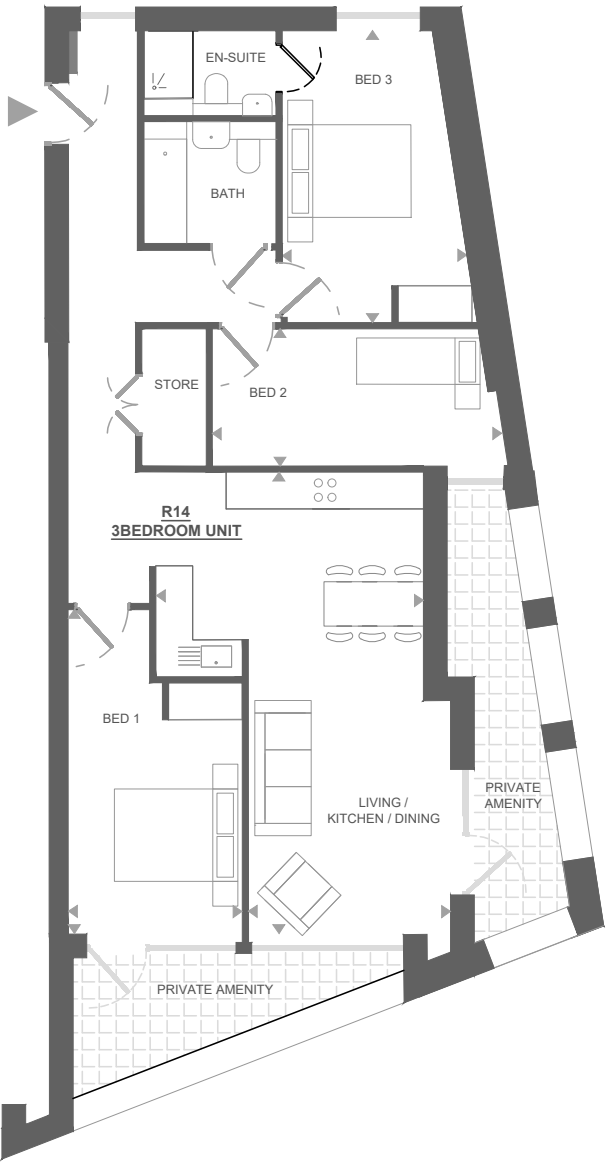


Kitchen/Living/Dining	3.2 × 12.3 m
Bedroom 1	3.2 × 4.1 m
Bedroom 2	3.0 × 4.4 m
Total	
	77 sqm
	829 sqft
Outside space	7 sqm
	75 sqft

All measurements are approximate and are taken at maximum widths and lengths of rooms. Plans are drawn to scale at a design phase and may vary during build. Kitchens and wardrobes sizes and layouts may differ to those shown. Furniture layouts are indicative only (where they appear). All total sqft and sqm are gross measurements. Window styles and positions may vary. Floorplans are not to scale.



Apartment R14
Core B
First Floor
90.5 sqm / 974 sqft
3 Bedrooms
2 Bathrooms
2 Terraces

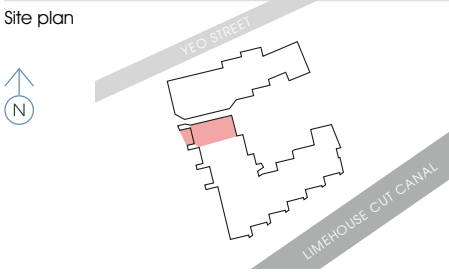
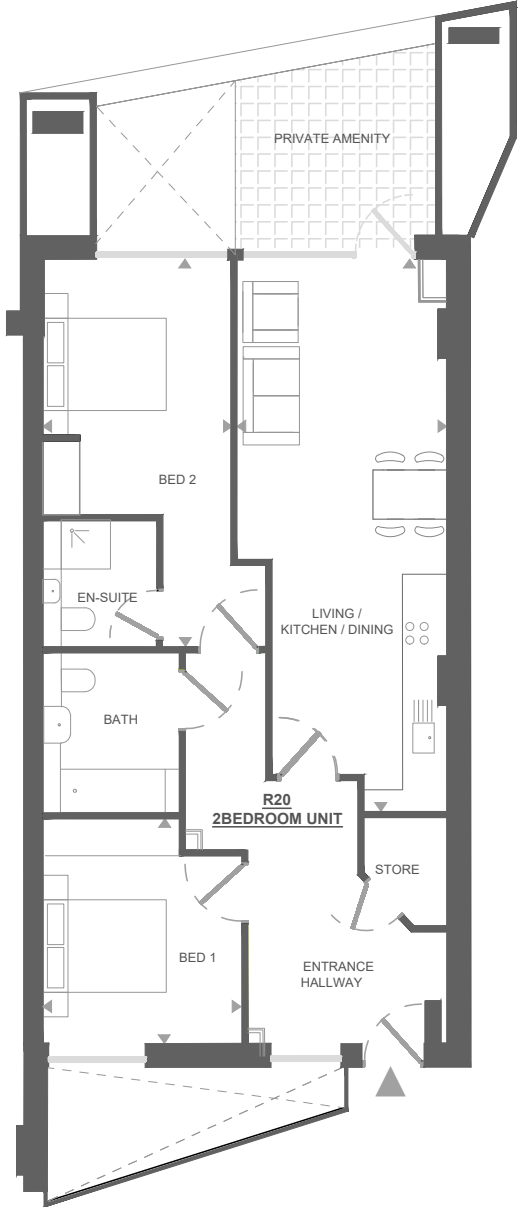


Kitchen/Living/Dining	3.3 × 7.5 m
Bedroom 1	2.8 × 5.3 m
Bedroom 2	4.7 × 2.2 m
Bedroom 3	3.0 × 4.7 m
Total	
	90.5 sqm
	974 sqft
Outside space	15.5 sqm
	167 sqft

All measurements are approximate and are taken at maximum widths and lengths of rooms. Plans are drawn to scale at a design phase and may vary during build. Kitchens and wardrobes sizes and layouts may differ to those shown. Furniture layouts are indicative only (where they appear). All total sqft and sqm are gross measurements. Window styles and positions may vary. Floorplans are not to scale.



Apartment R20
Core B
Second Floor
82.7 sqm / 890 sqft
2 Bedrooms
2 Bathrooms
Terrace

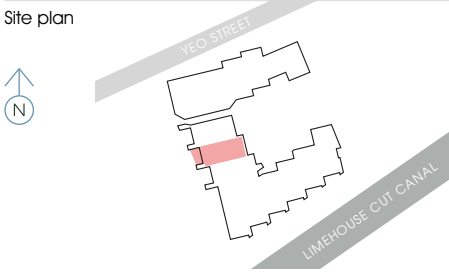
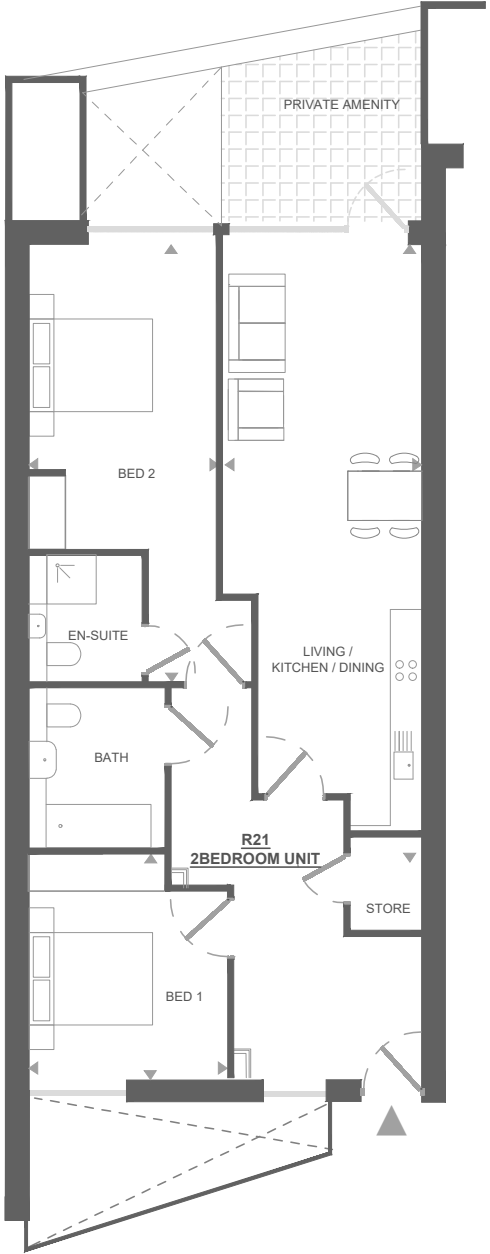


Kitchen/Living/Dining	3.4 × 9.0 m
Bedroom 1	3.2 × 3.6 m
Bedroom 2	3.0 × 6.3 m
Total	82.7 sqm
	890 sqft
Outside space	8.5 sqm
	91 sqft

All measurements are approximate and are taken at maximum widths and lengths of rooms. Plans are drawn to scale at a design phase and may vary during build. Kitchens and wardrobes sizes and layouts may differ to those shown. Furniture layouts are indicative only (where they appear). All total sqft and sqm are gross measurements. Window styles and positions may vary. Floorplans are not to scale.



Apartment R21
Core B
Second Floor
86.6 sqm / 932 sqft
2 Bedrooms
2 Bathrooms
Terrace

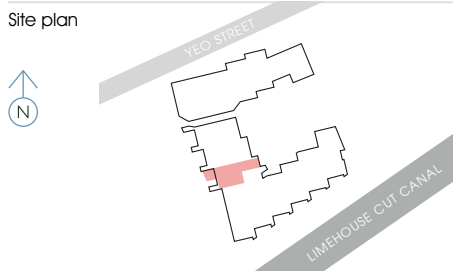


Kitchen/Living/Dining	3.3 × 9.5 m
Bedroom 1	3.2 × 3.6 m
Bedroom 2	3.1 × 7.1 m
Total	86.6 sqm
	932 sqft
Outside space	8.5 sqm
	91 sqft

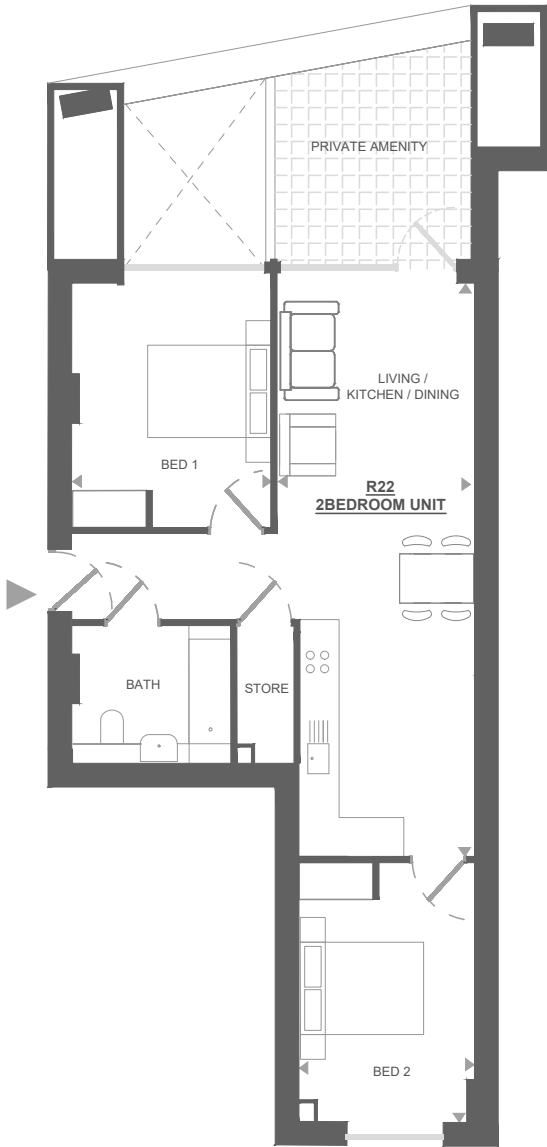
All measurements are approximate and are taken at maximum widths and lengths of rooms. Plans are drawn to scale at a design phase and may vary during build. Kitchens and wardrobes sizes and layouts may differ to those shown. Furniture layouts are indicative only (where they appear). All total sqft and sqm are gross measurements. Window styles and positions may vary. Floorplans are not to scale.



Apartment R22
Core B
Second Floor
67 sqm / 721 sqft
2 Bedrooms
1 Bathroom
Terrace



Kitchen/Living/Dining	3.2 × 9.3 m
Bedroom 1	3.2 × 4.0 m
Bedroom 2	2.8 × 4.2 m
Total	67 sqm
	721 sqft
Outside space	10 sqm
	108 sqft

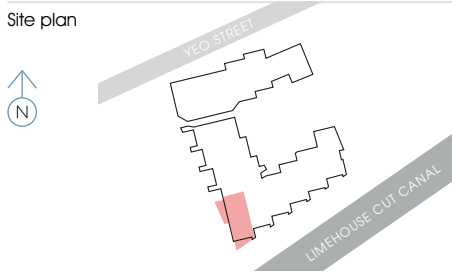


All measurements are approximate and are taken at maximum widths and lengths of rooms. Plans are drawn to scale at a design phase and may vary during build. Kitchens and wardrobes sizes and layouts may differ to those shown. Furniture layouts are indicative only (where they appear). All total sqft and sqm are gross measurements. Window styles and positions may vary. Floorplans are not to scale.

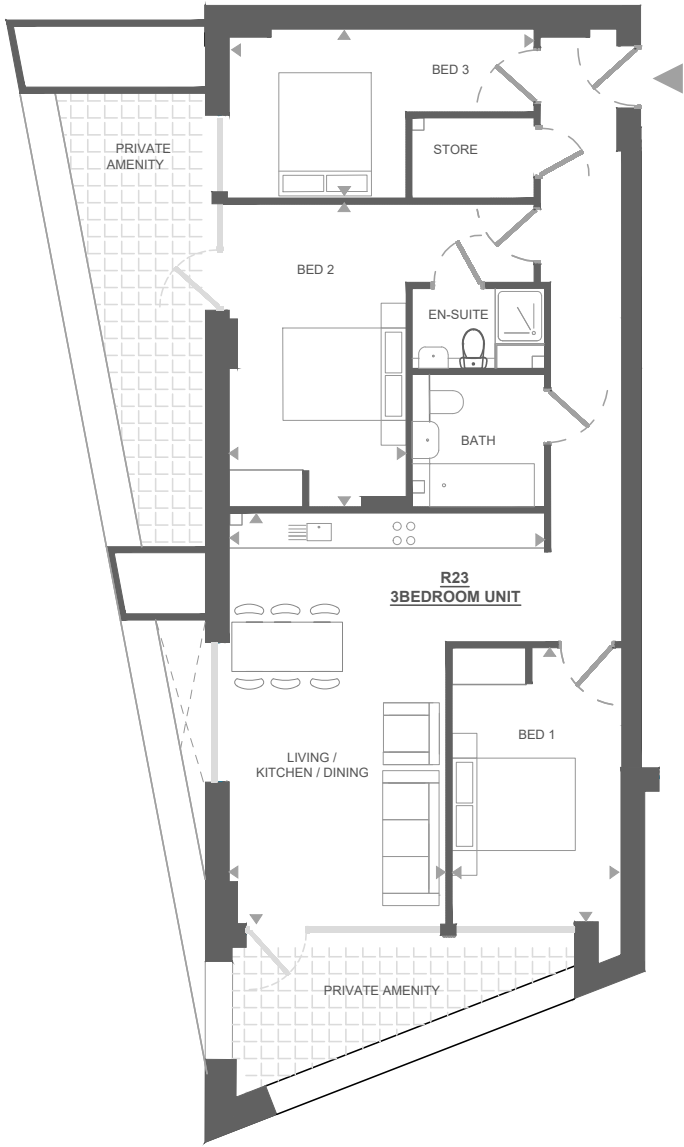
YEO STREET, BOW, LONDON E3 | THEEXCHANGE3.CO.UK



Apartment R23
Core B
Second Floor
91.5 sqm / 985 sqft
3 Bedrooms
2 Bathrooms
2 Terraces



Kitchen/Living/Dining	5.1 × 6.7 m
Bedroom 1	2.8 × 4.5 m
Bedroom 2	5.0 × 4.9 m
Bedroom 3	5.0 × 2.7 m
Total	91.5 sqm
	985 sqft
Outside space	20.5 sqm
	221 sqft

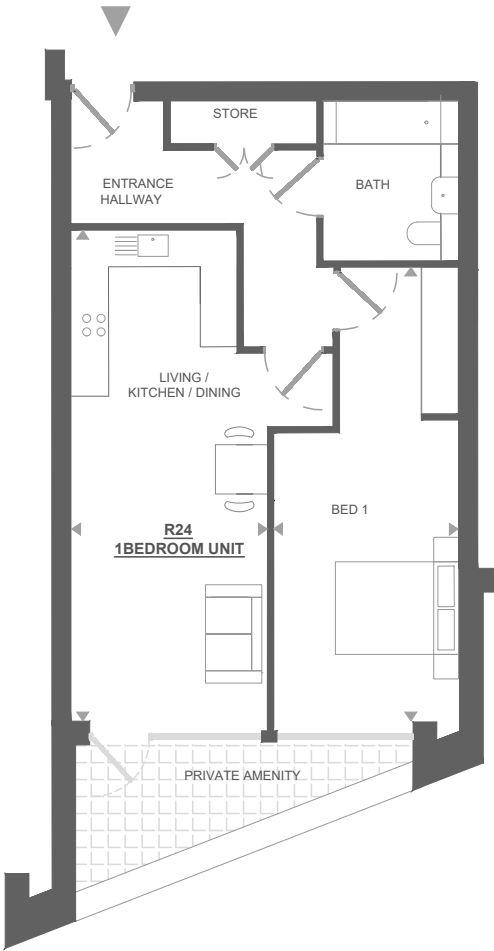


All measurements are approximate and are taken at maximum widths and lengths of rooms. Plans are drawn to scale at a design phase and may vary during build. Kitchens and wardrobes sizes and layouts may differ to those shown. Furniture layouts are indicative only (where they appear). All total sqft and sqm are gross measurements. Window styles and positions may vary. Floorplans are not to scale.

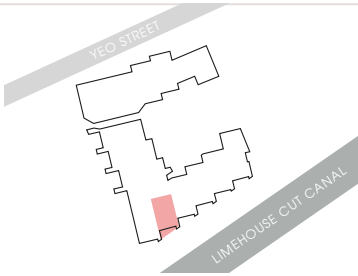
YEO STREET, BOW, LONDON E3 | THEEXCHANGE3.CO.UK



Apartment R24
Core B
Second Floor
63 sqm / 678 sqft
1 Bedroom
1 Bathroom
Terrace

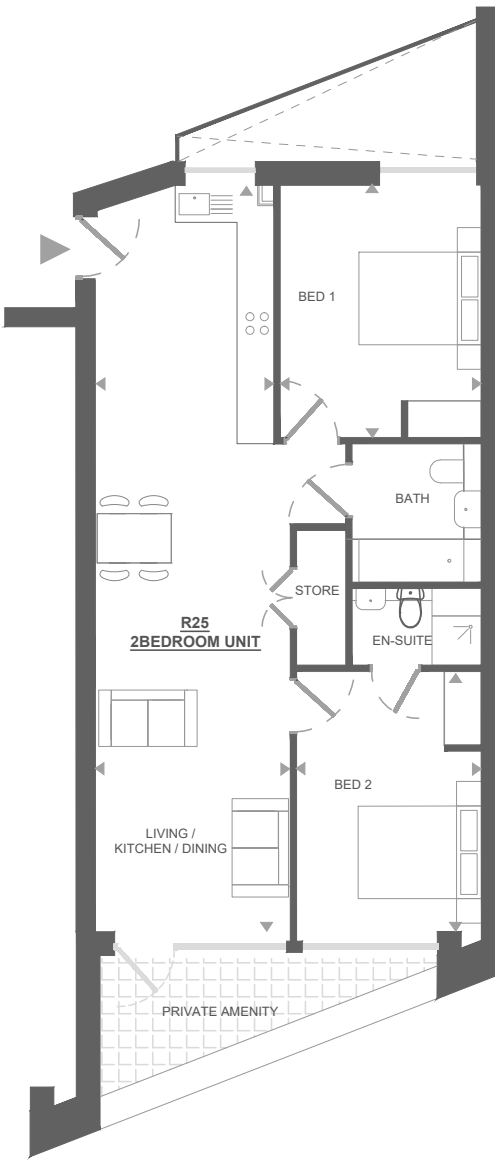


Site plan

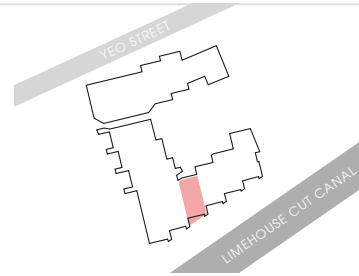


Kitchen/Living/Dining	3.2 × 7.9 m
Bedroom 1	3.0 × 7.3 m
Total	63 sqm
	678 sqft
Outside space	7 sqm
	75 sqft

Apartment R25
Core B
Second Floor
75 sqm / 807 sqft
2 Bedrooms
2 Bathrooms
Terrace



Site plan



Kitchen/Living/Dining	3.2 × 12.1 m
Bedroom 1	3.3 × 4.1 m
Bedroom 2	3.0 × 4.2 m
Total	75 sqm
	807 sqft
Outside space	7 sqm
	75 sqft



All measurements are approximate and are taken at maximum widths and lengths of rooms. Plans are drawn to scale at a design phase and may vary during build. Kitchens and wardrobes sizes and layouts may differ to those shown. Furniture layouts are indicative only (where they appear). All total sqft and sqm are gross measurements. Window styles and positions may vary. Floorplans are not to scale.

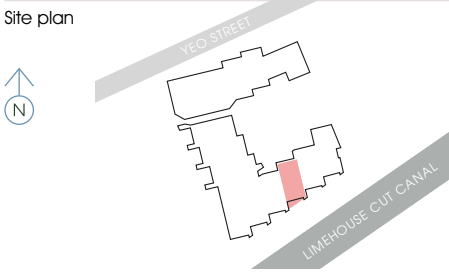
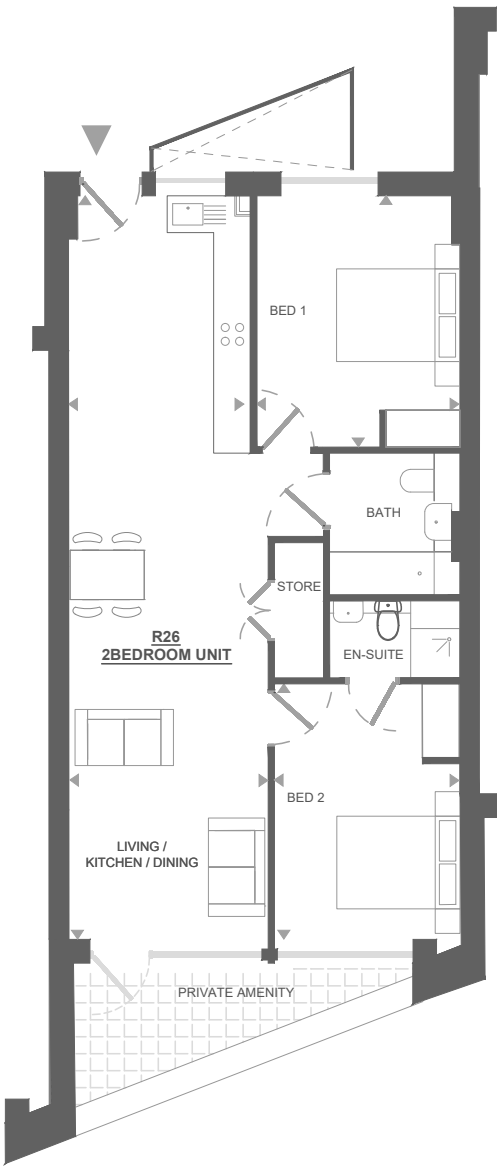
YEO STREET, BOW, LONDON E3 | THEEXCHANGE3.CO.UK



All measurements are approximate and are taken at maximum widths and lengths of rooms. Plans are drawn to scale at a design phase and may vary during build. Kitchens and wardrobes sizes and layouts may differ to those shown. Furniture layouts are indicative only (where they appear). All total sqft and sqm are gross measurements. Window styles and positions may vary. Floorplans are not to scale.

YEO STREET, BOW, LONDON E3 | THEEXCHANGE3.CO.UK

Apartment R26
Core B
Second Floor
76.5 sqm / 823 sqft
2 Bedrooms
2 Bathrooms
Terrace

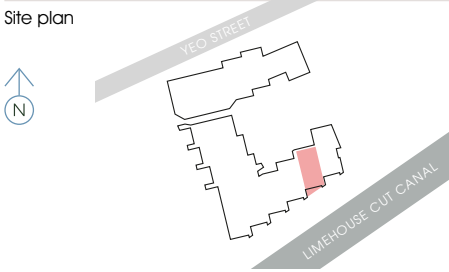
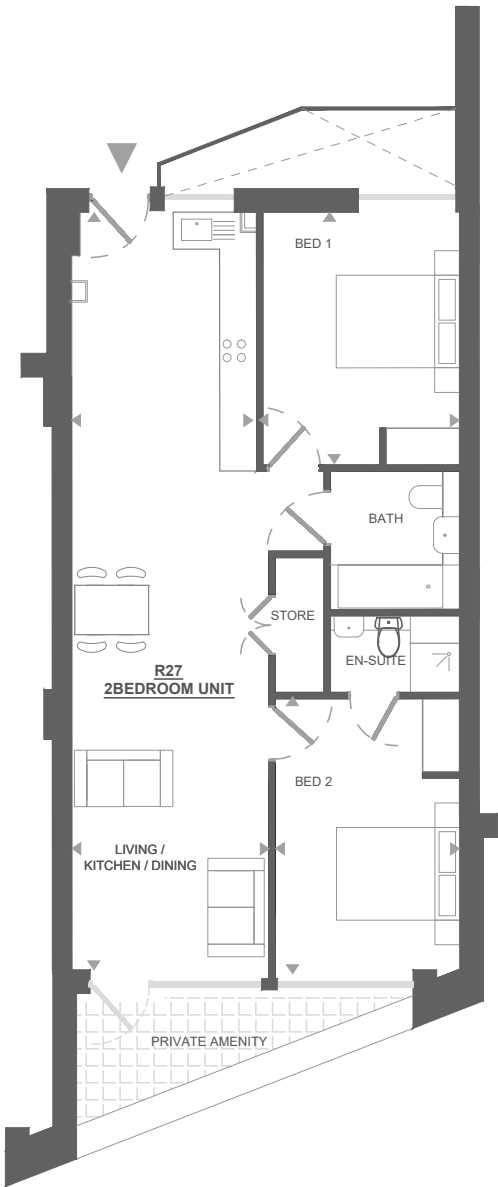


Kitchen/Living/Dining	3.2 × 12.1 m
Bedroom 1	3.3 × 4.1 m
Bedroom 2	3.0 × 4.1 m
Total	76.5 sqm
	823 sqft
Outside space	7 sqm
	75 sqft

All measurements are approximate and are taken at maximum widths and lengths of rooms. Plans are drawn to scale at a design phase and may vary during build. Kitchens and wardrobes sizes and layouts may differ to those shown. Furniture layouts are indicative only (where they appear). All total sqft and sqm are gross measurements. Window styles and positions may vary. Floorplans are not to scale.



Apartment R27
Core B
Second Floor
77 sqm / 829 sqft
2 Bedrooms
2 Bathrooms
Terrace

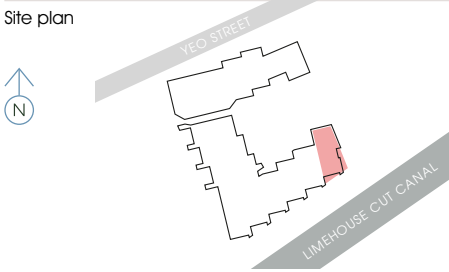
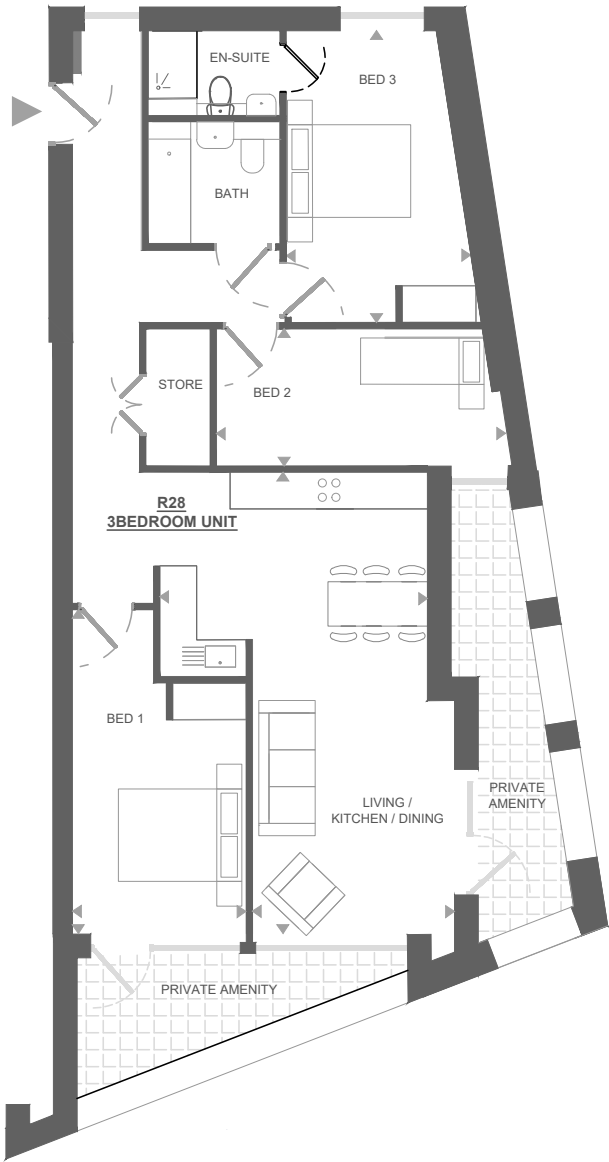


Kitchen/Living/Dining	3.2 × 12.3 m
Bedroom 1	3.2 × 4.1 m
Bedroom 2	3.0 × 4.4 m
Total	77 sqm
	829 sqft
Outside space	7 sqm
	75 sqft

All measurements are approximate and are taken at maximum widths and lengths of rooms. Plans are drawn to scale at a design phase and may vary during build. Kitchens and wardrobes sizes and layouts may differ to those shown. Furniture layouts are indicative only (where they appear). All total sqft and sqm are gross measurements. Window styles and positions may vary. Floorplans are not to scale.



Apartment R28
Core B
Second Floor
90.5 sqm / 974 sqft
3 Bedrooms
2 Bathrooms
2 Terraces

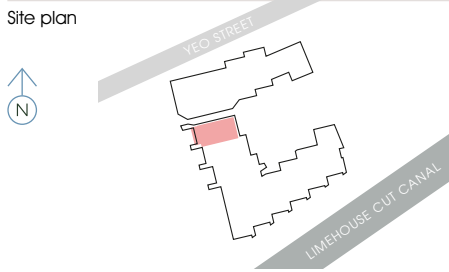
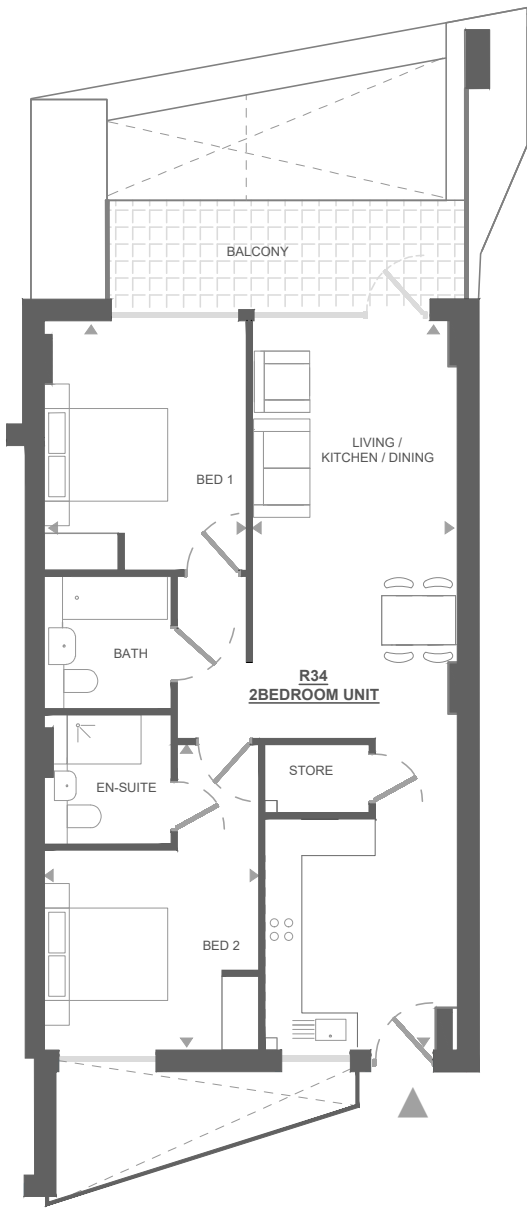


Kitchen/Living/Dining	3.3 × 7.5 m
Bedroom 1	2.8 × 5.3 m
Bedroom 2	4.7 × 2.2 m
Bedroom 3	3.0 × 4.7 m
Total	90.5 sqm
	974 sqft
Outside space	15.5 sqm
	167 sqft

All measurements are approximate and are taken at maximum widths and lengths of rooms. Plans are drawn to scale at a design phase and may vary during build. Kitchens and wardrobes sizes and layouts may differ to those shown. Furniture layouts are indicative only (where they appear). All total sqft and sqm are gross measurements. Window styles and positions may vary. Floorplans are not to scale.



Apartment R34
Core B
Third Floor
78.5 sqm / 845 sqft
2 Bedrooms
2 Bathrooms
Terrace

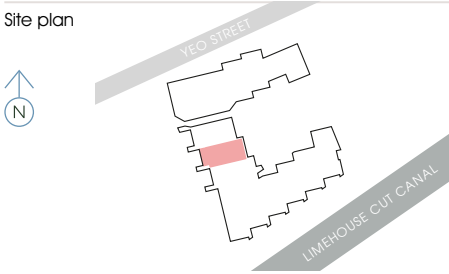


Kitchen/Living/Dining	3.3 × 11.8 m
Bedroom 1	3.3 × 4.1 m
Bedroom 2	3.5 × 5.0 m
Total	78.5 sqm
	845 sqft
Outside space	9 sqm
	97 sqft

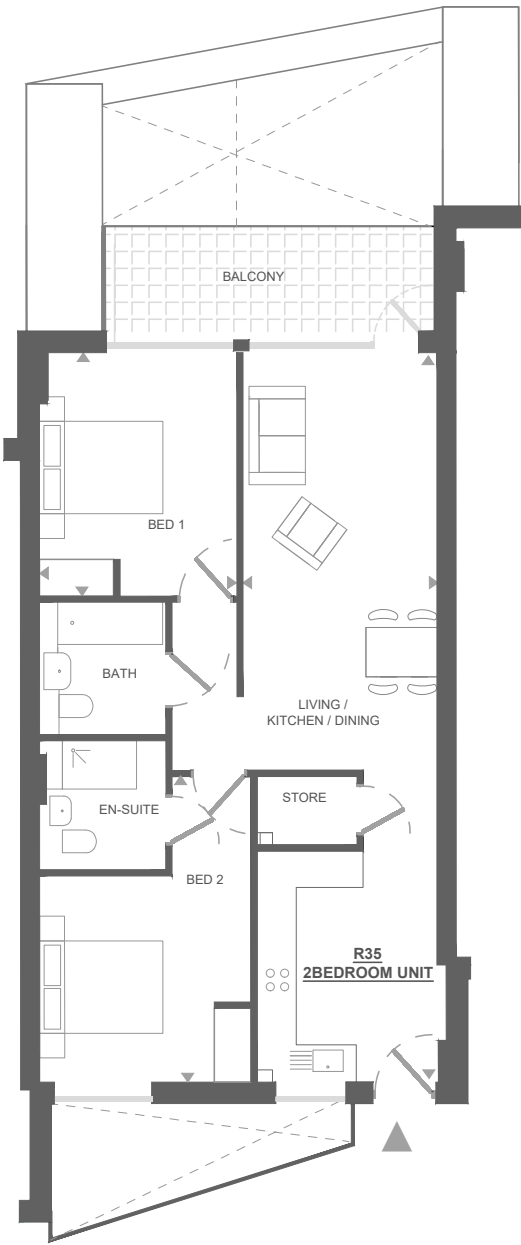
All measurements are approximate and are taken at maximum widths and lengths of rooms. Plans are drawn to scale at a design phase and may vary during build. Kitchens and wardrobes sizes and layouts may differ to those shown. Furniture layouts are indicative only (where they appear). All total sqft and sqm are gross measurements. Window styles and positions may vary. Floorplans are not to scale.



Apartment R35
Core B
Third Floor
76 sqm / 818 sqft
2 Bedrooms
2 Bathrooms
Terrace



Kitchen/Living/Dining	3.2 × 11.8 m
Bedroom 1	3.2 × 4.0 m
Bedroom 2	3.4 × 5.0 m
Total	76 sqm
	818 sqft
Outside space	9 sqm
	97 sqft

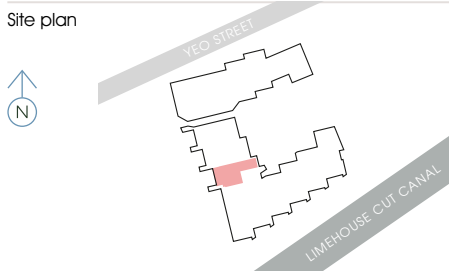


All measurements are approximate and are taken at maximum widths and lengths of rooms. Plans are drawn to scale at a design phase and may vary during build. Kitchens and wardrobes sizes and layouts may differ to those shown. Furniture layouts are indicative only (where they appear). All total sqft and sqm are gross measurements. Window styles and positions may vary. Floorplans are not to scale.

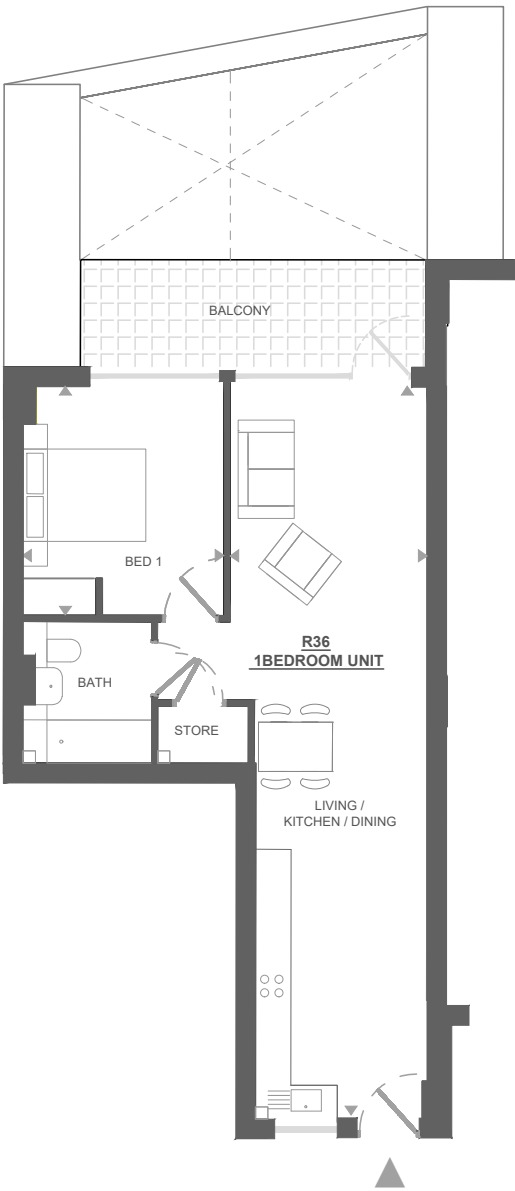
YEO STREET, BOW, LONDON E3 | THEEXCHANGE3.CO.UK



Apartment R36
Core B
Third Floor
55 sqm / 592 sqft
1 Bedroom
1 Bathroom
Terrace



Kitchen/Living/Dining	3.1 × 12.0 m
Bedroom 1	3.2 × 3.8 m
Total	55 sqm
	592 sqft
Outside space	9 sqm
	97 sqft

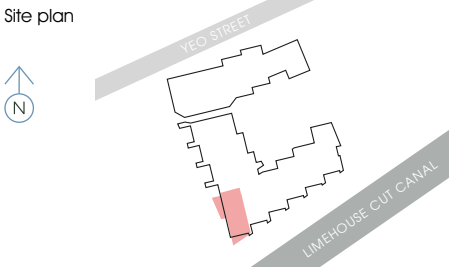
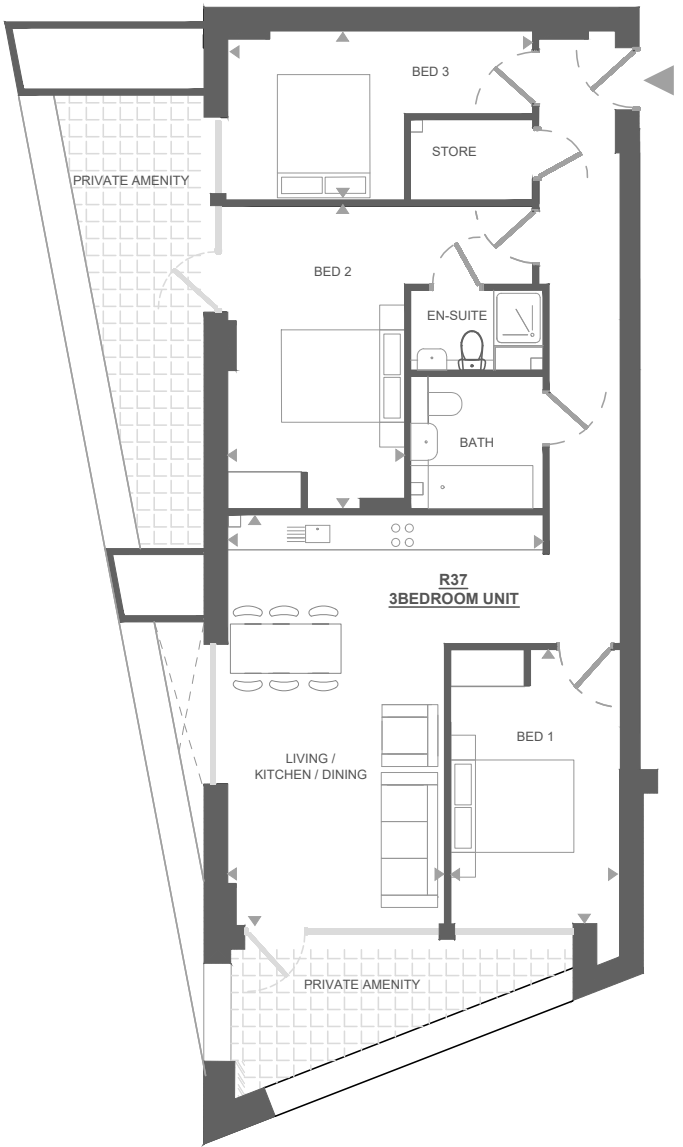


All measurements are approximate and are taken at maximum widths and lengths of rooms. Plans are drawn to scale at a design phase and may vary during build. Kitchens and wardrobes sizes and layouts may differ to those shown. Furniture layouts are indicative only (where they appear). All total sqft and sqm are gross measurements. Window styles and positions may vary. Floorplans are not to scale.

YEO STREET, BOW, LONDON E3 | THEEXCHANGE3.CO.UK



Apartment R37
Core B
Third Floor
91.5 sqm / 985 sqft
3 Bedrooms
2 Bathrooms
2 Terraces



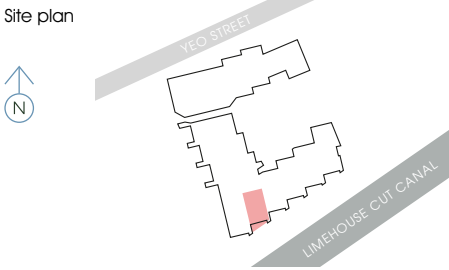
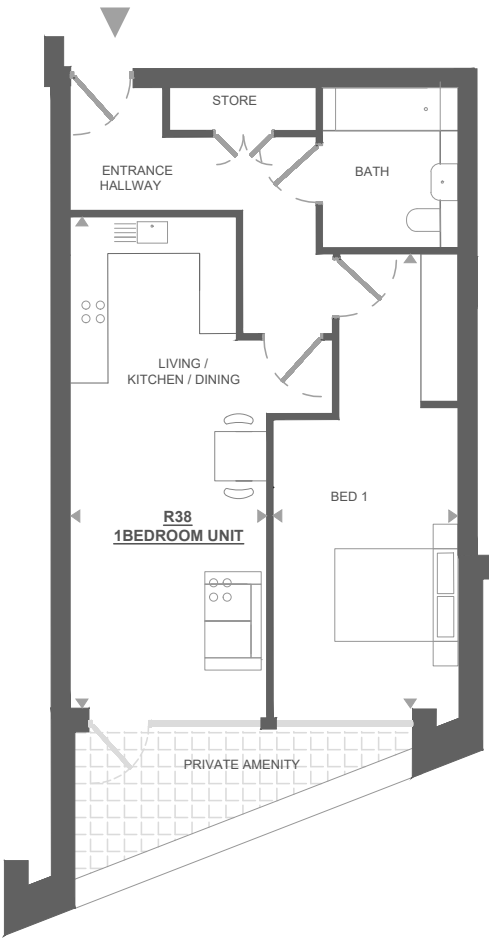
Kitchen/Living/Dining	5.1 × 6.7 m
Bedroom 1	2.8 × 4.5 m
Bedroom 2	5.0 × 4.9 m
Bedroom 3	5.0 × 2.7 m
Total	91.5 sqm
	985 sqft
Outside space	20.5 sqm
	221 sqft

All measurements are approximate and are taken at maximum widths and lengths of rooms. Plans are drawn to scale at a design phase and may vary during build. Kitchens and wardrobes sizes and layouts may differ to those shown. Furniture layouts are indicative only (where they appear). All total sqft and sqm are gross measurements. Window styles and positions may vary. Floorplans are not to scale.

YEO STREET, BOW, LONDON E3 | THEEXCHANGE3.CO.UK



Apartment R38
Core B
Third Floor
63 sqm / 678 sqft
1 Bedroom
1 Bathroom
Terrace



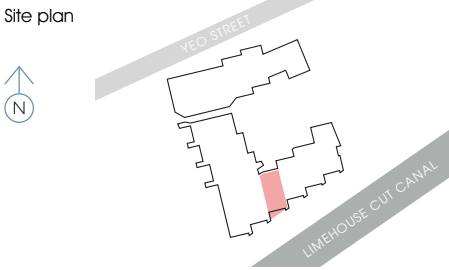
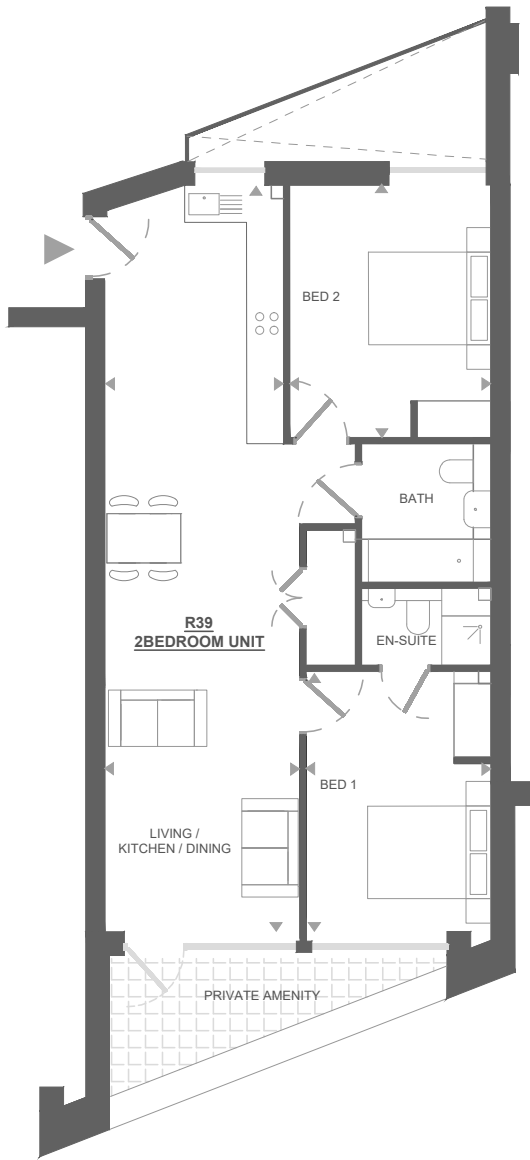
Kitchen/Living/Dining	3.2 × 7.9 m
Bedroom 1	3.0 × 7.3 m
Total	63 sqm
	678 sqft
Outside space	7 sqm
	75 sqft

All measurements are approximate and are taken at maximum widths and lengths of rooms. Plans are drawn to scale at a design phase and may vary during build. Kitchens and wardrobes sizes and layouts may differ to those shown. Furniture layouts are indicative only (where they appear). All total sqft and sqm are gross measurements. Window styles and positions may vary. Floorplans are not to scale.

YEO STREET, BOW, LONDON E3 | THEEXCHANGE3.CO.UK



Apartment R39
Core B
Third Floor
75 sqm / 807 sqft
2 Bedrooms
2 Bathrooms
Terrace

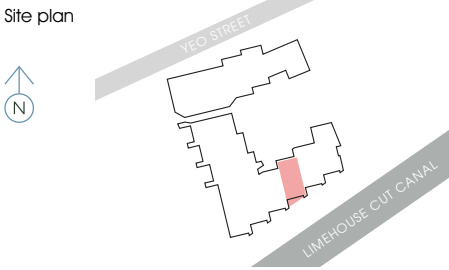
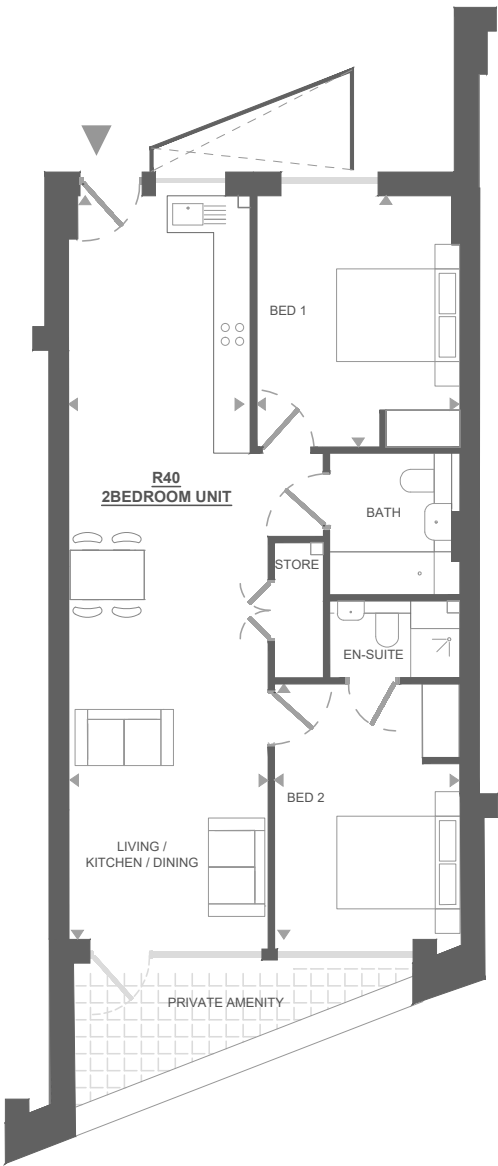


Kitchen/Living/Dining	3.2 × 12.1 m
Bedroom 1	3.3 × 4.1 m
Bedroom 2	3.0 × 4.2 m
Total	75 sqm
	807 sqft
Outside space	7 sqm
	75 sqft

All measurements are approximate and are taken at maximum widths and lengths of rooms. Plans are drawn to scale at a design phase and may vary during build. Kitchens and wardrobes sizes and layouts may differ to those shown. Furniture layouts are indicative only (where they appear). All total sqft and sqm are gross measurements. Window styles and positions may vary. Floorplans are not to scale.



Apartment R40
Core B
Third Floor
76.5 sqm / 823 sqft
2 Bedrooms
2 Bathrooms
Terrace

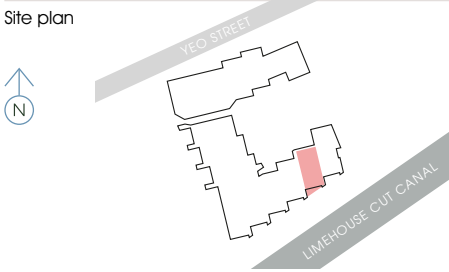
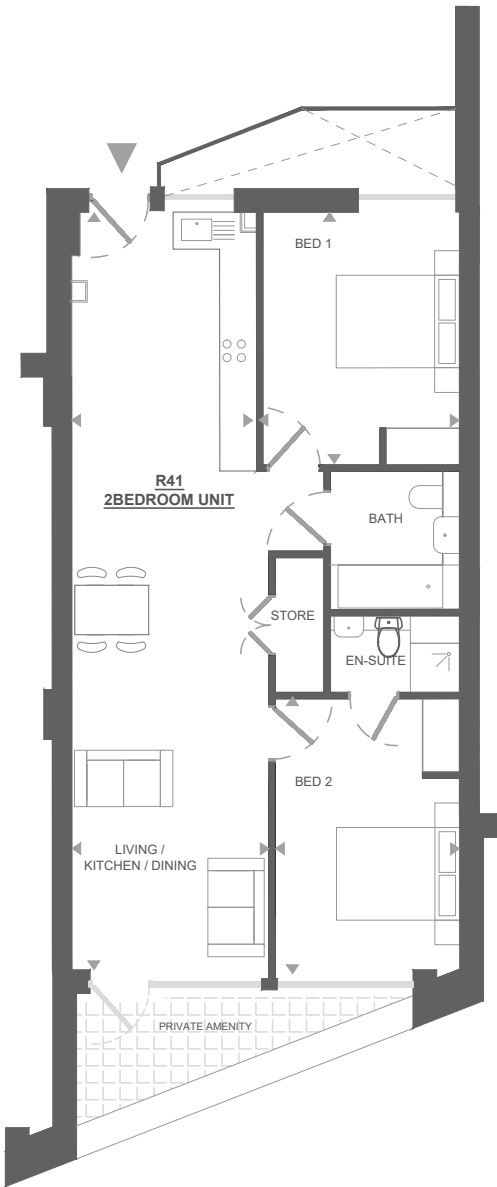


Kitchen/Living/Dining	3.2 × 12.1 m
Bedroom 1	3.3 × 4.1 m
Bedroom 2	3.0 × 4.1 m
Total	76.5 sqm
	823 sqft
Outside space	7 sqm
	75 sqft

All measurements are approximate and are taken at maximum widths and lengths of rooms. Plans are drawn to scale at a design phase and may vary during build. Kitchens and wardrobes sizes and layouts may differ to those shown. Furniture layouts are indicative only (where they appear). All total sqft and sqm are gross measurements. Window styles and positions may vary. Floorplans are not to scale.



Apartment R41
Core B
Third Floor
77 sqm / 829 sqft
2 Bedrooms
2 Bathrooms
Terrace

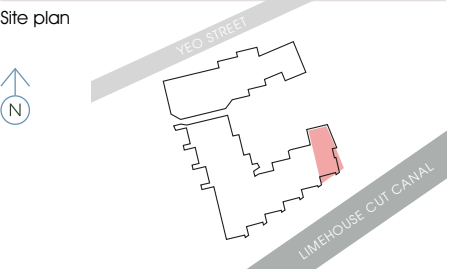
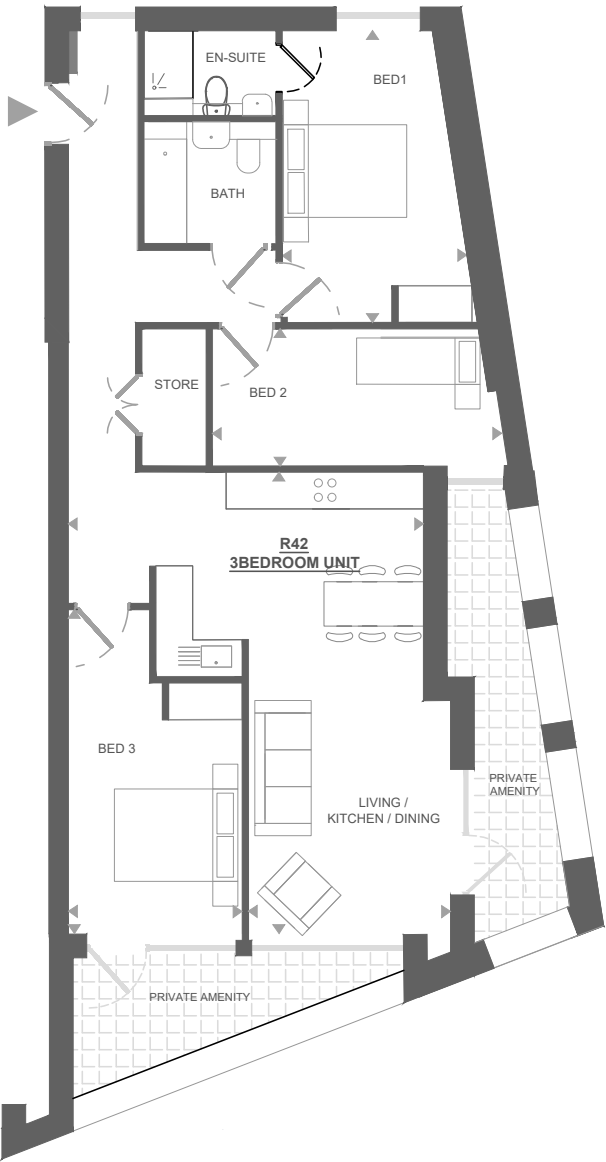


Kitchen/Living/Dining	3.2 × 12.3 m
Bedroom 1	3.2 × 4.1 m
Bedroom 2	3.0 × 4.4 m
Total	77 sqm
	829 sqft
Outside space	7 sqm
	75 sqft

All measurements are approximate and are taken at maximum widths and lengths of rooms. Plans are drawn to scale at a design phase and may vary during build. Kitchens and wardrobes sizes and layouts may differ to those shown. Furniture layouts are indicative only (where they appear). All total sqft and sqm are gross measurements. Window styles and positions may vary. Floorplans are not to scale.



Apartment R42
Core B
Third Floor
90.5 sqm / 974 sqft
3 Bedrooms
2 Bathrooms
2 Terraces

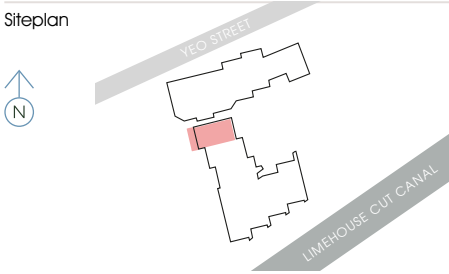


Kitchen/Living/Dining	3.3 × 7.5 m
Bedroom 1	2.8 × 5.3 m
Bedroom 2	4.7 × 2.2 m
Bedroom 3	3.0 × 4.7 m
Total	90.5 sqm
	974 sqft
Outside space	15.5 sqm
	167 sqft

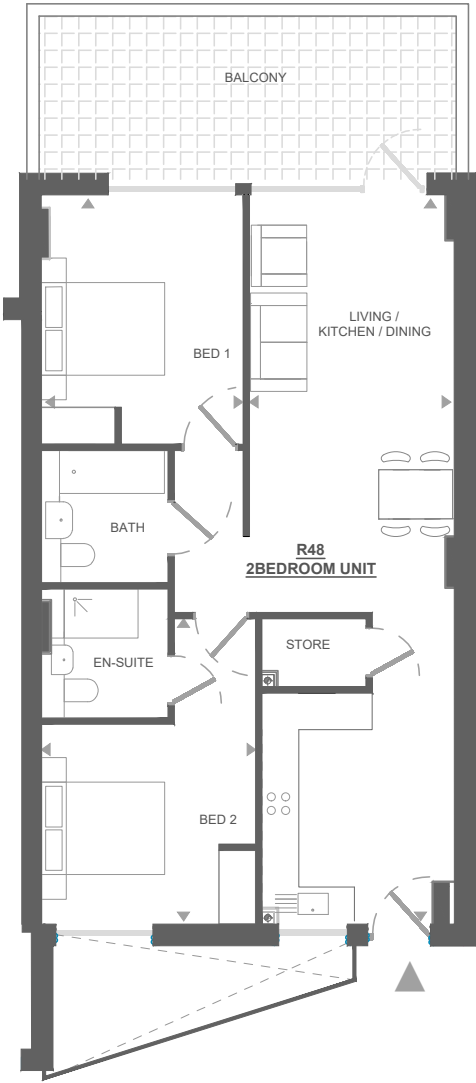
All measurements are approximate and are taken at maximum widths and lengths of rooms. Plans are drawn to scale at a design phase and may vary during build. Kitchens and wardrobes sizes and layouts may differ to those shown. Furniture layouts are indicative only (where they appear). All total sqft and sqm are gross measurements. Window styles and positions may vary. Floorplans are not to scale.



Apartment R48
Core B
Fourth Floor
78.5 sqm / 845 sqft
2 Bedrooms
2 Bathrooms
Terrace



Kitchen/Living/Dining	3.3 × 11.8 m
Bedroom 1	3.3 × 4.1 m
Bedroom 2	3.5 × 5.0 m
Total	78.5 sqm
	845 sqft
Outside space	15 sqm
	162 sqft

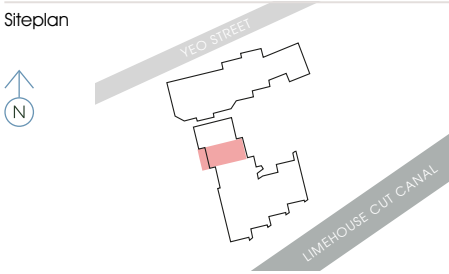


All measurements are approximate and are taken at maximum widths and lengths of rooms. Plans are drawn to scale at a design phase and may vary during build. Kitchens and wardrobes sizes and layouts may differ to those shown. Furniture layouts are indicative only (where they appear). All total sqft and sqm are gross measurements. Window styles and positions may vary. Floorplans are not to scale.

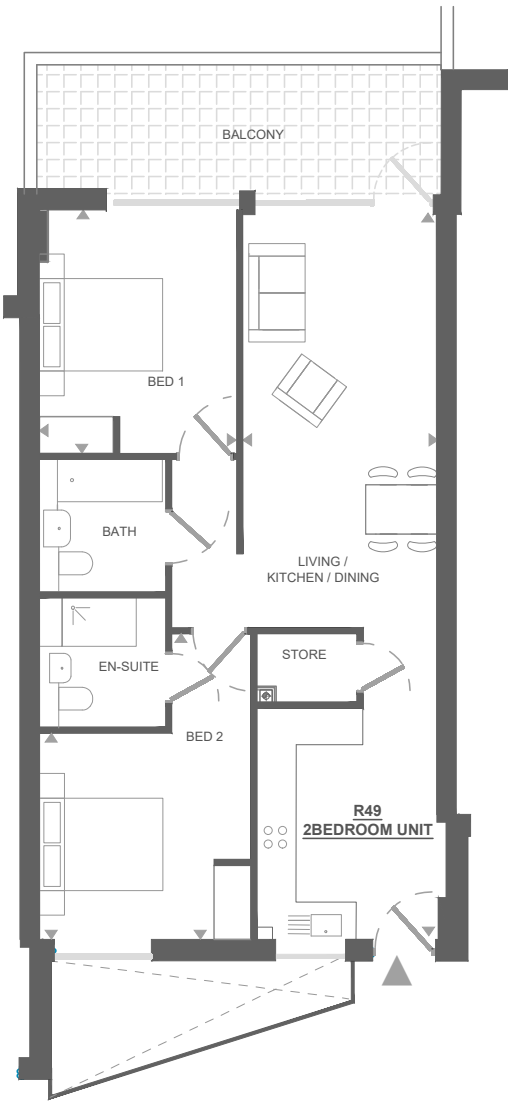
YEO STREET, BOW, LONDON E3 | THEEXCHANGE3.CO.UK



Apartment R49
Core B
Fourth Floor
76 sqm / 818 sqft
2 Bedrooms
2 Bathrooms
Terrace



Kitchen/Living/Dining	3.2 × 11.8 m
Bedroom 1	3.2 × 4.0 m
Bedroom 2	3.4 × 5.0 m
Total	76 sqm
	818 sqft
Outside space	14 sqm
	151 sqft

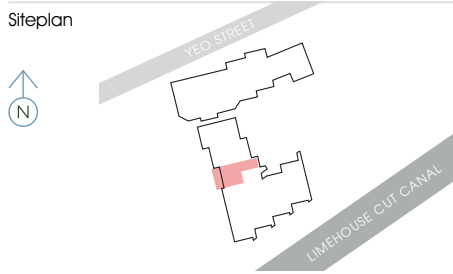


All measurements are approximate and are taken at maximum widths and lengths of rooms. Plans are drawn to scale at a design phase and may vary during build. Kitchens and wardrobes sizes and layouts may differ to those shown. Furniture layouts are indicative only (where they appear). All total sqft and sqm are gross measurements. Window styles and positions may vary. Floorplans are not to scale.

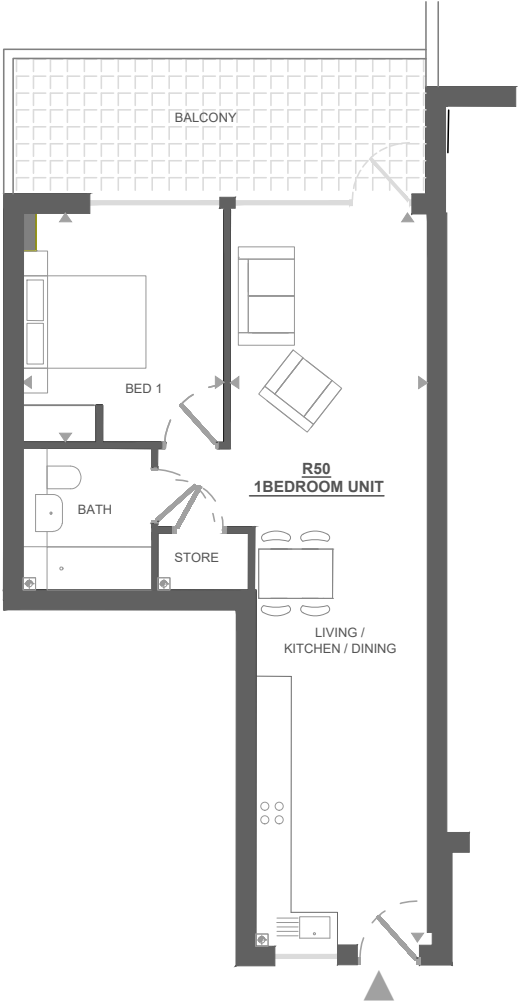
YEO STREET, BOW, LONDON E3 | THEEXCHANGE3.CO.UK



Apartment R50
Core B
Fourth Floor
55 sqm / 592 sqft
1 Bedroom
1 Bathroom
Terrace



Kitchen/Living/Dining	3.1 × 12.0 m
Bedroom 1	3.2 × 3.8 m
Total	55 sqm
	592 sqft
Outside space	14.5 sqm
	156 sqft

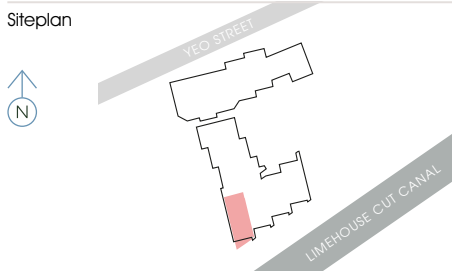


All measurements are approximate and are taken at maximum widths and lengths of rooms. Plans are drawn to scale at a design phase and may vary during build. Kitchens and wardrobes sizes and layouts may differ to those shown. Furniture layouts are indicative only (where they appear). All total sqft and sqm are gross measurements. Window styles and positions may vary. Floorplans are not to scale.

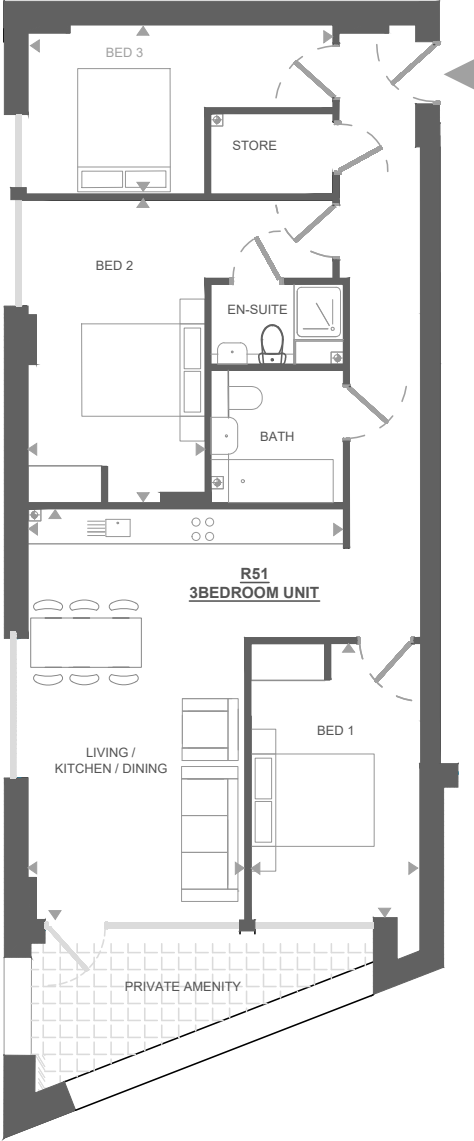
YEO STREET, BOW, LONDON E3 | THEEXCHANGE3.CO.UK



Apartment R51
Core B
Fourth Floor
91.5 sqm / 985 sqft
3 Bedrooms
2 Bathrooms
Terrace



Kitchen/Living/Dining	5.1 × 6.7 m
Bedroom 1	2.8 × 4.5 m
Bedroom 2	5.0 × 4.9 m
Bedroom 3	5.0 × 2.7 m
Total	91.5 sqm
	985 sqft
Outside space	8 sqm
	86 sqft

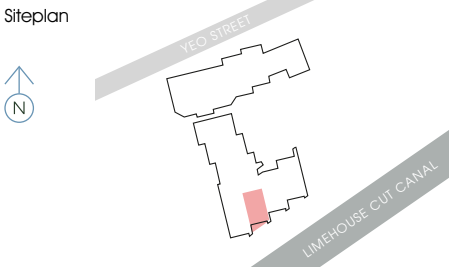
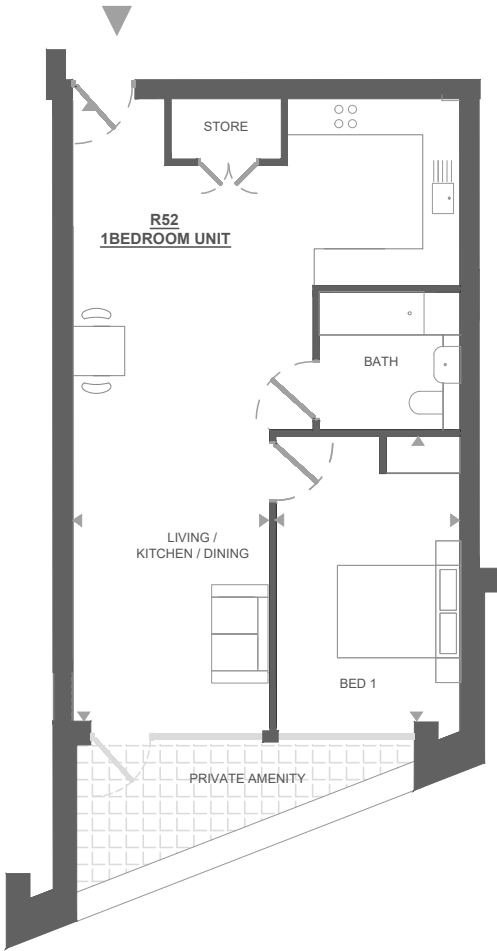


All measurements are approximate and are taken at maximum widths and lengths of rooms. Plans are drawn to scale at a design phase and may vary during build. Kitchens and wardrobes sizes and layouts may differ to those shown. Furniture layouts are indicative only (where they appear). All total sqft and sqm are gross measurements. Window styles and positions may vary. Floorplans are not to scale.

YEO STREET, BOW, LONDON E3 | THEEXCHANGE3.CO.UK



Apartment R52
Core B
Fourth Floor
63 sqm / 678 sqft
1 Bedroom
1 Bathroom
Terrace

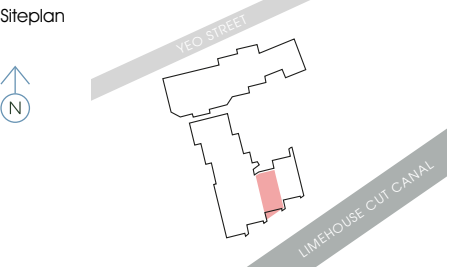
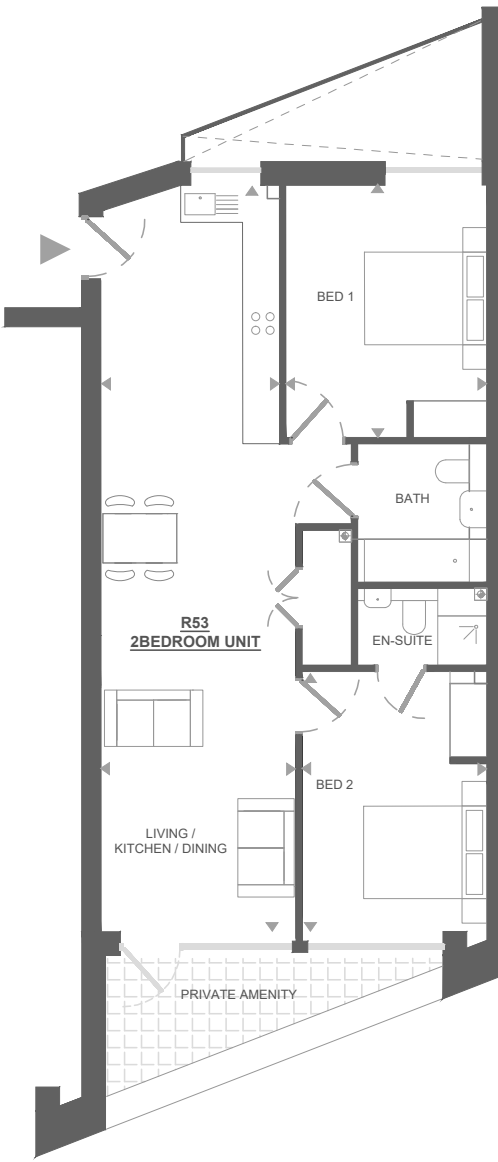


Kitchen/Living/Dining	3.2 × 10.0 m
Bedroom 1	3.0 × 4.6 m
Total	63 sqm
	678 sqft
Outside space	7 sqm
	75 sqft

All measurements are approximate and are taken at maximum widths and lengths of rooms. Plans are drawn to scale at a design phase and may vary during build. Kitchens and wardrobes sizes and layouts may differ to those shown. Furniture layouts are indicative only (where they appear). All total sqft and sqm are gross measurements. Window styles and positions may vary. Floorplans are not to scale.



Apartment R53
Core B
Fourth Floor
75 sqm / 807 sqft
2 Bedrooms
2 Bathrooms
Terrace

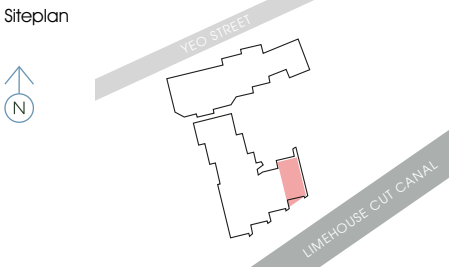
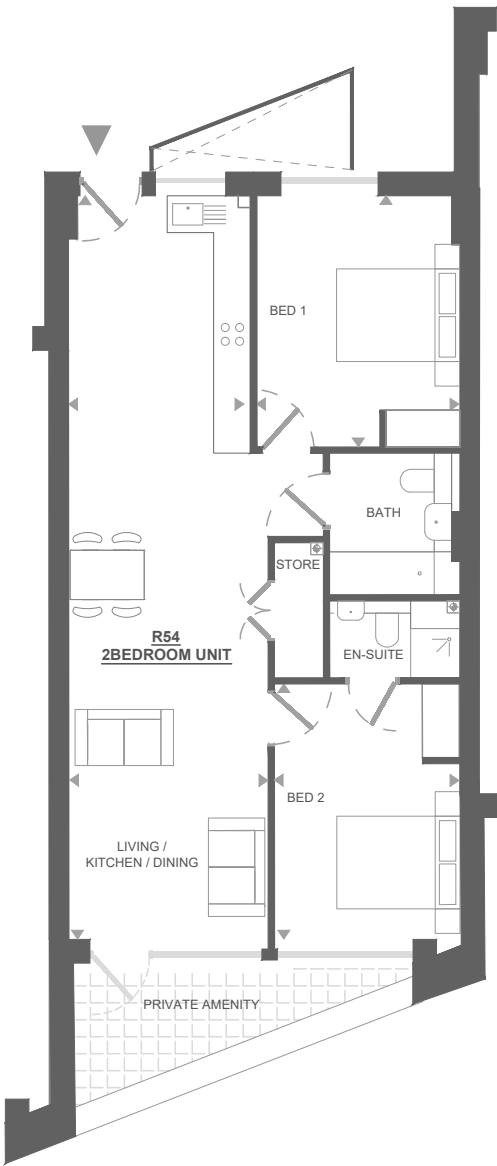


Kitchen/Living/Dining	3.2 × 12.1 m
Bedroom 1	3.3 × 4.1 m
Bedroom 2	3.0 × 4.2 m
Total	75 sqm
	807 sqft
Outside space	7 sqm
	75 sqft

All measurements are approximate and are taken at maximum widths and lengths of rooms. Plans are drawn to scale at a design phase and may vary during build. Kitchens and wardrobes sizes and layouts may differ to those shown. Furniture layouts are indicative only (where they appear). All total sqft and sqm are gross measurements. Window styles and positions may vary. Floorplans are not to scale.



Apartment R54
Core B
Fourth Floor
76.5 sqm / 823 sqft
2 Bedrooms
2 Bathrooms
Terrace

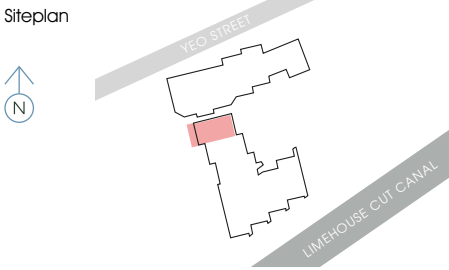
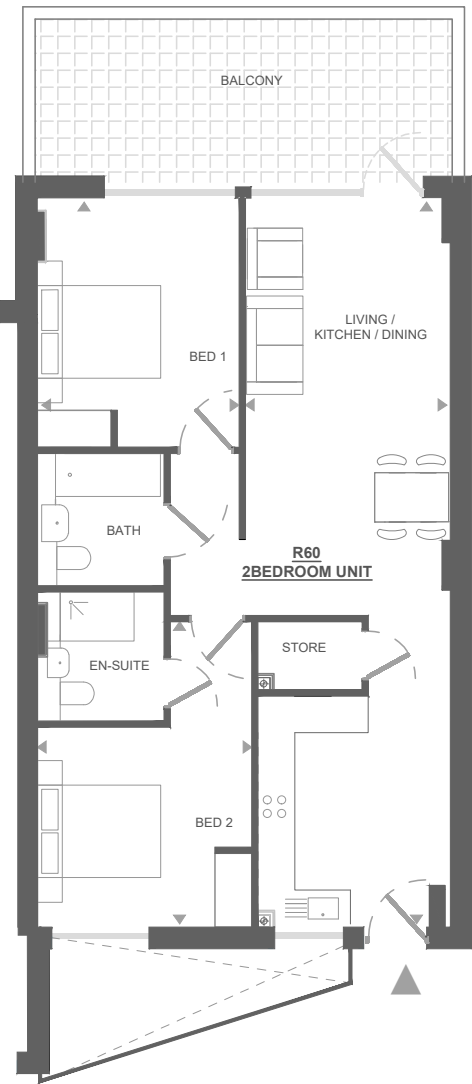


Kitchen/Living/Dining	3.2 × 12.1 m
Bedroom 1	3.3 × 4.1 m
Bedroom 2	3.0 × 4.1 m
Total	76.5 sqm
	823 sqft
Outside space	7 sqm
	75 sqft

All measurements are approximate and are taken at maximum widths and lengths of rooms. Plans are drawn to scale at a design phase and may vary during build. Kitchens and wardrobes sizes and layouts may differ to those shown. Furniture layouts are indicative only (where they appear). All total sqft and sqm are gross measurements. Window styles and positions may vary. Floorplans are not to scale.



Apartment R60
Core B
Fifth Floor
78.5 sqm / 845 sqft
2 Bedrooms
2 Bathrooms
Terrace

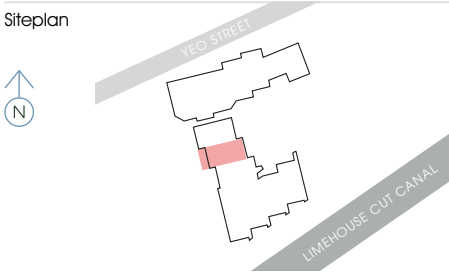


Kitchen/Living/Dining	3.3 × 11.8 m
Bedroom 1	3.3 × 4.1 m
Bedroom 2	3.5 × 5.0 m
Total	78.5 sqm
	845 sqft
Outside space	15 sqm
	161 sqft

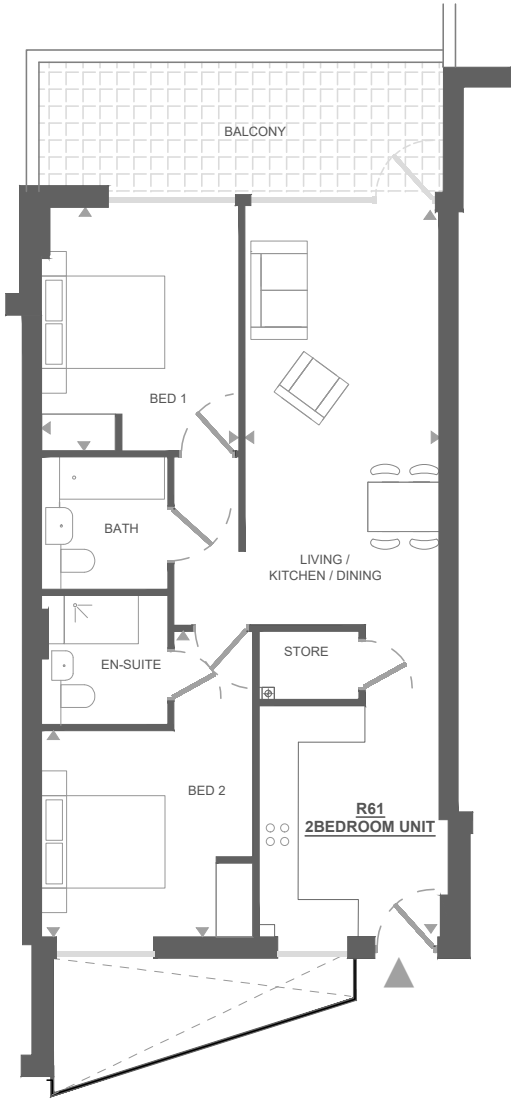
All measurements are approximate and are taken at maximum widths and lengths of rooms. Plans are drawn to scale at a design phase and may vary during build. Kitchens and wardrobes sizes and layouts may differ to those shown. Furniture layouts are indicative only (where they appear). All total sqft and sqm are gross measurements. Window styles and positions may vary. Floorplans are not to scale.



Apartment R61
Core B
Fifth Floor
76 sqm / 818 sqft
2 Bedrooms
2 Bathrooms
Terrace



Kitchen/Living/Dining	3.2 × 11.8 m
Bedroom 1	3.2 × 4.0 m
Bedroom 2	3.4 × 5.0 m
Total	76 sqm
	818 sqft
Outside space	14 sqm
	151 sqft

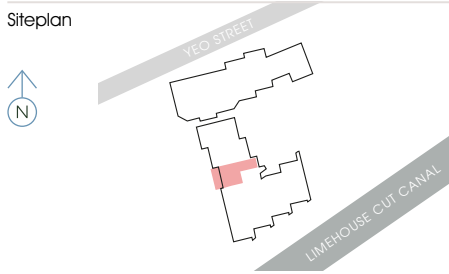


All measurements are approximate and are taken at maximum widths and lengths of rooms. Plans are drawn to scale at a design phase and may vary during build. Kitchens and wardrobes sizes and layouts may differ to those shown. Furniture layouts are indicative only (where they appear). All total sqft and sqm are gross measurements. Window styles and positions may vary. Floorplans are not to scale.

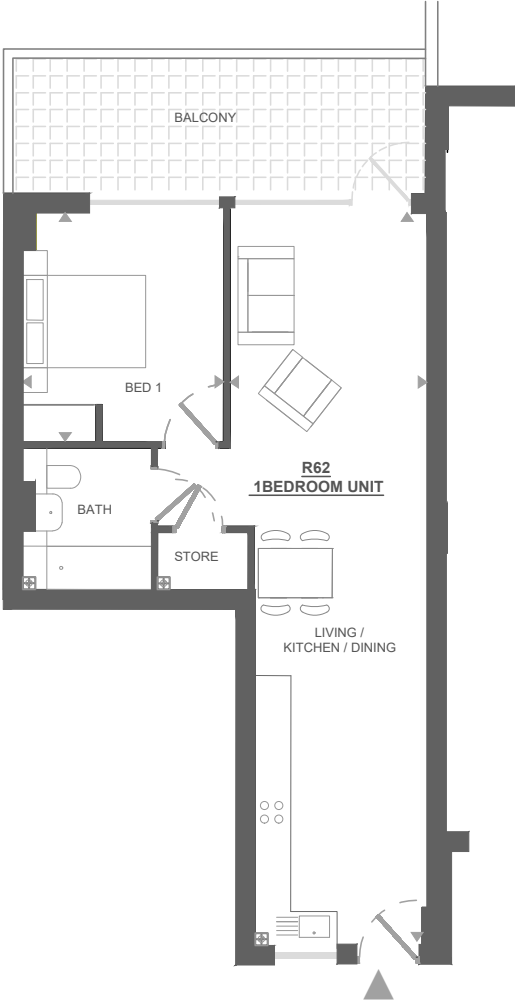
YEO STREET, BOW, LONDON E3 | THEEXCHANGE3.CO.UK



Apartment R62
Core B
Fifth Floor
55 sqm / 592 sqft
1 Bedroom
1 Bathroom
Terrace



Kitchen/Living/Dining	3.1 × 12.0 m
Bedroom 1	3.2 × 3.8 m
Total	55 sqm
	592 sqft
Outside space	14.5 sqm
	156 sqft

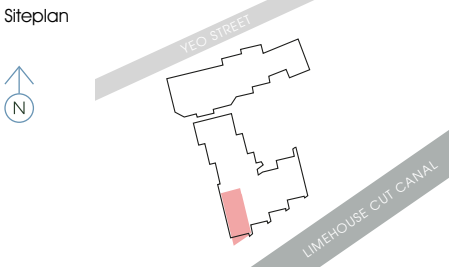
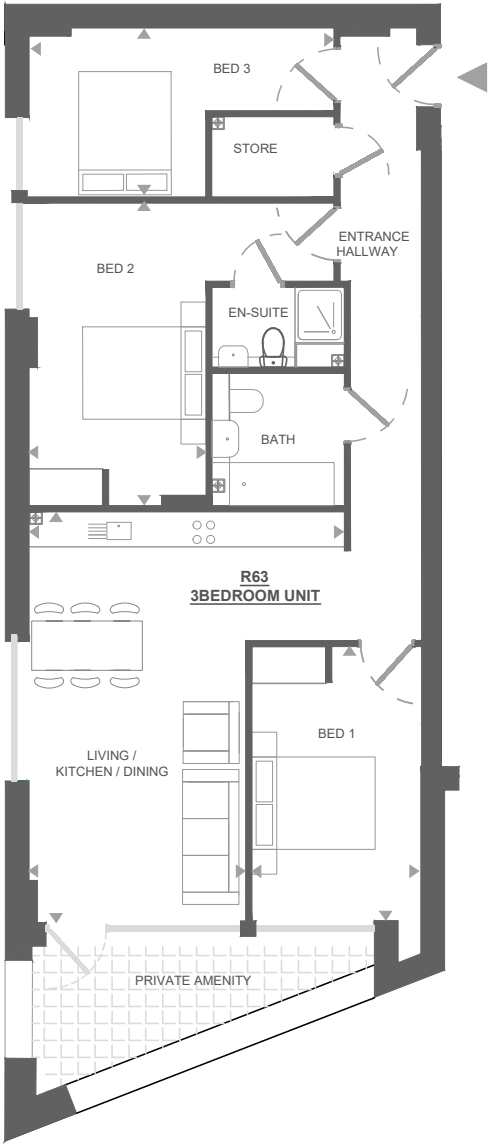


All measurements are approximate and are taken at maximum widths and lengths of rooms. Plans are drawn to scale at a design phase and may vary during build. Kitchens and wardrobes sizes and layouts may differ to those shown. Furniture layouts are indicative only (where they appear). All total sqft and sqm are gross measurements. Window styles and positions may vary. Floorplans are not to scale.

YEO STREET, BOW, LONDON E3 | THEEXCHANGE3.CO.UK



Apartment R63
Core B
Fifth Floor
91.5 sqm / 985 sqft
3 Bedrooms
2 Bathrooms
Terrace



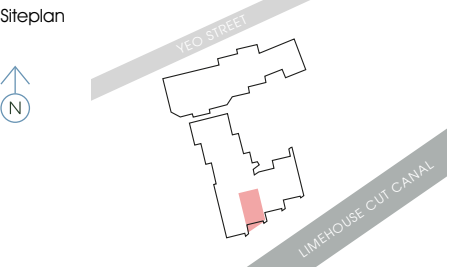
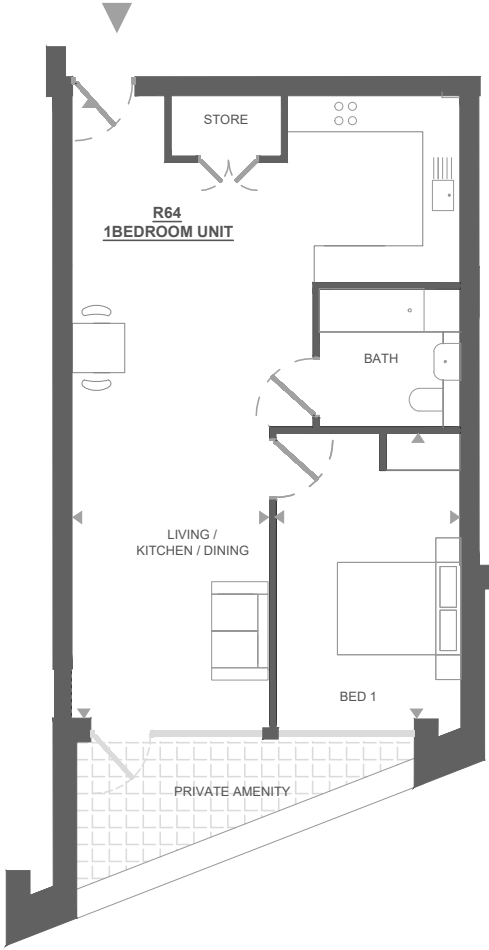
Kitchen/Living/Dining	5.1 × 6.7 m
Bedroom 1	2.8 × 4.5 m
Bedroom 2	5.0 × 4.9 m
Bedroom 3	5.0 × 2.7 m
Total	91.5 sqm
	985 sqft
Outside space	8 sqm
	86 sqft

All measurements are approximate and are taken at maximum widths and lengths of rooms. Plans are drawn to scale at a design phase and may vary during build. Kitchens and wardrobes sizes and layouts may differ to those shown. Furniture layouts are indicative only (where they appear). All total sqft and sqm are gross measurements. Window styles and positions may vary. Floorplans are not to scale.

YEO STREET, BOW, LONDON E3 | THEEXCHANGE3.CO.UK



Apartment R64
Core B
Fifth Floor
63 sqm / 678 sqft
1 Bedroom
1 Bathroom
Terrace



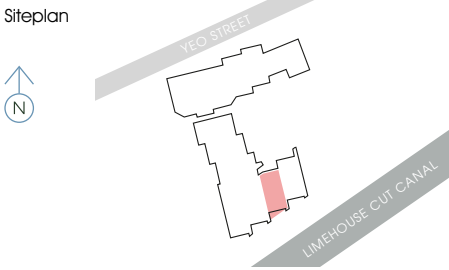
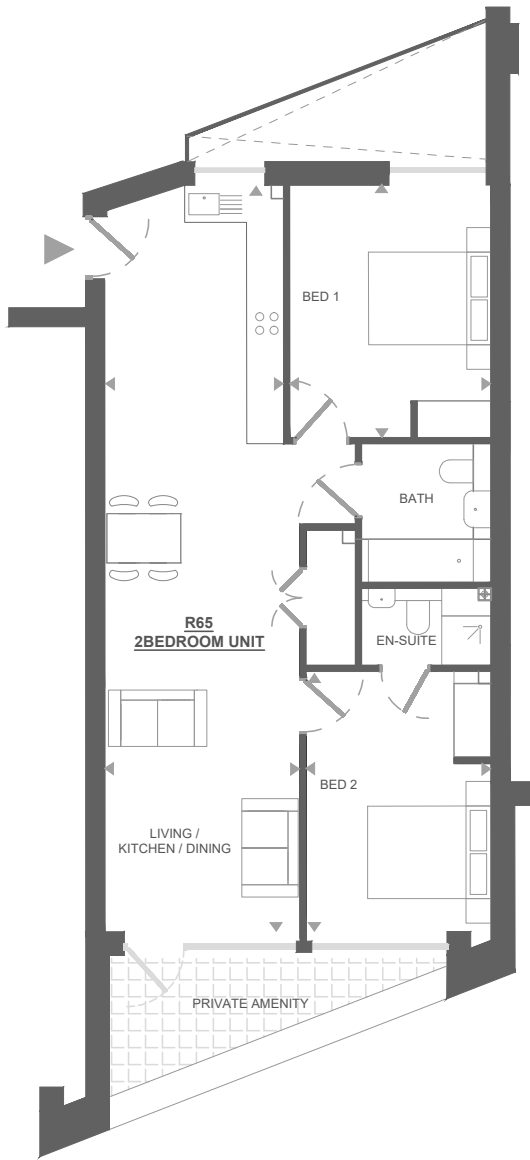
Kitchen/Living/Dining	3.2 × 10.0 m
Bedroom 1	3.0 × 4.6 m
Total	63 sqm
	678 sqft
Outside space	7 sqm
	75 sqft

All measurements are approximate and are taken at maximum widths and lengths of rooms. Plans are drawn to scale at a design phase and may vary during build. Kitchens and wardrobes sizes and layouts may differ to those shown. Furniture layouts are indicative only (where they appear). All total sqft and sqm are gross measurements. Window styles and positions may vary. Floorplans are not to scale.

YEO STREET, BOW, LONDON E3 | THEEXCHANGE3.CO.UK



Apartment R65
Core B
Fifth Floor
75 sqm / 807 sqft
2 Bedrooms
2 Bathrooms
Terrace

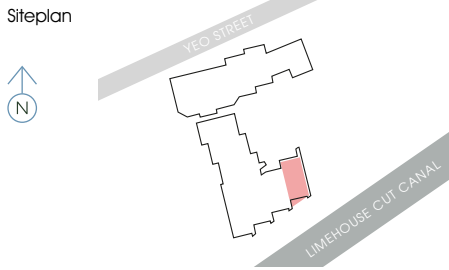
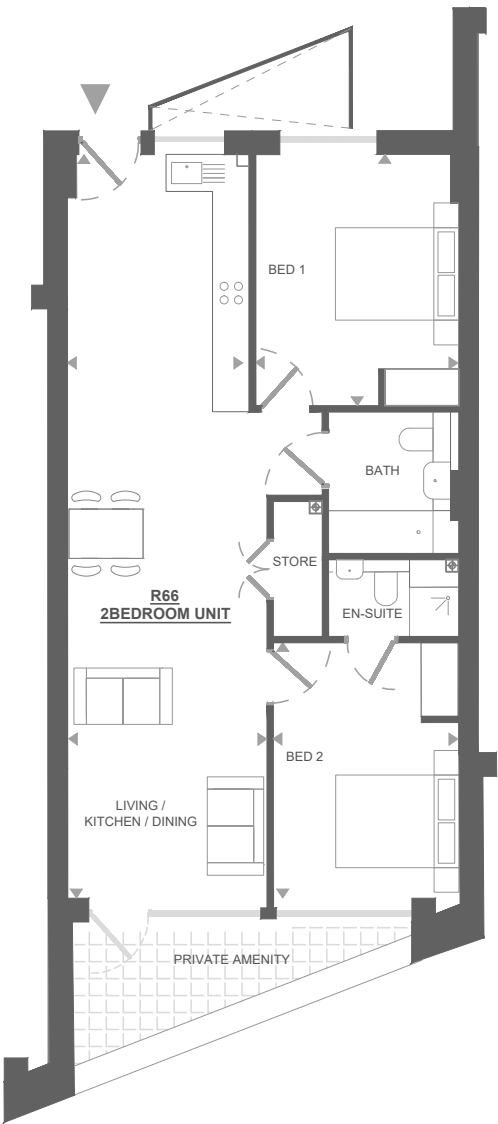


Kitchen/Living/Dining	3.2 × 12.1 m
Bedroom 1	3.3 × 4.1 m
Bedroom 2	3.0 × 4.2 m
Total	75 sqm
	807 sqft
Outside space	7 sqm
	75 sqft

All measurements are approximate and are taken at maximum widths and lengths of rooms. Plans are drawn to scale at a design phase and may vary during build. Kitchens and wardrobes sizes and layouts may differ to those shown. Furniture layouts are indicative only (where they appear). All total sqft and sqm are gross measurements. Window styles and positions may vary. Floorplans are not to scale.



Apartment R66
Core B
Fifth Floor
76.5 sqm / 823 sqft
2 Bedrooms
2 Bathrooms
Terrace

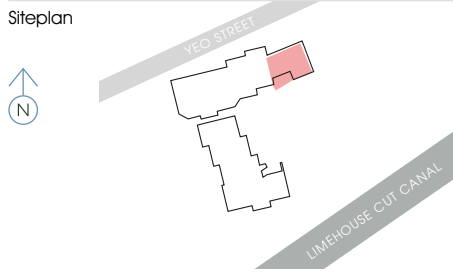
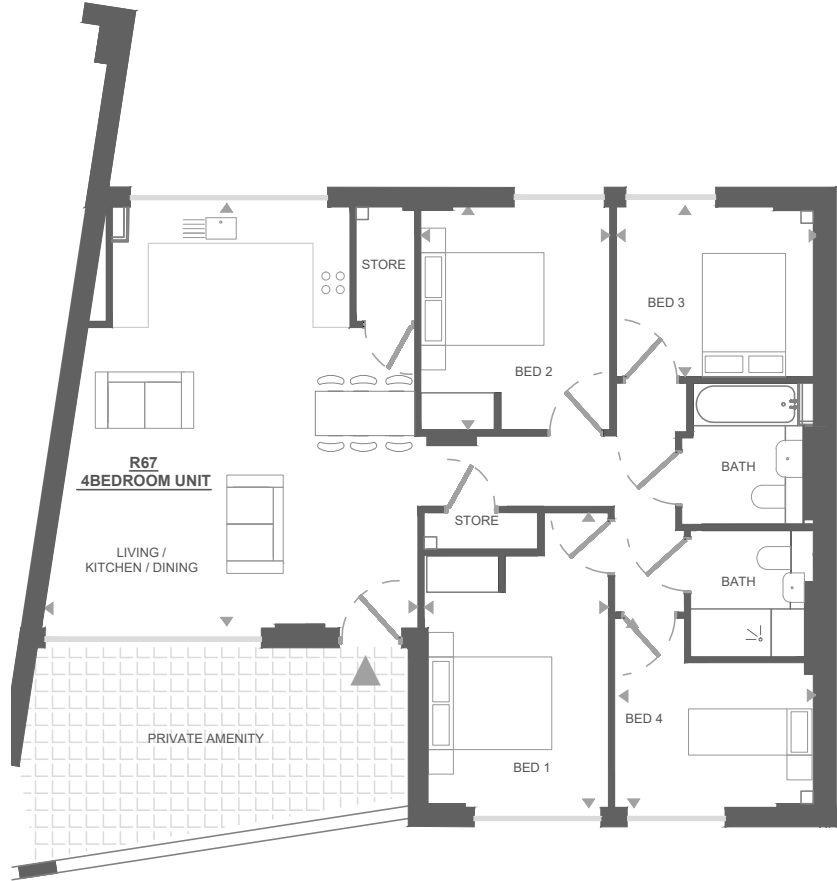


Kitchen/Living/Dining	3.2 × 12.1 m
Bedroom 1	3.3 × 4.1 m
Bedroom 2	3.0 × 4.1 m
Total	76.5 sqm
	823 sqft
Outside space	7 sqm
	75 sqft

All measurements are approximate and are taken at maximum widths and lengths of rooms. Plans are drawn to scale at a design phase and may vary during build. Kitchens and wardrobes sizes and layouts may differ to those shown. Furniture layouts are indicative only (where they appear). All total sqft and sqm are gross measurements. Window styles and positions may vary. Floorplans are not to scale.



Apartment R67
Core A
Sixth Floor
101 sqm / 1,087 sqft
4 Bedrooms
2 Bathrooms
Terrace



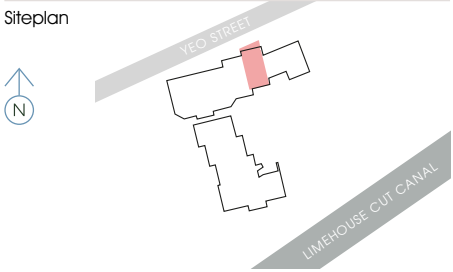
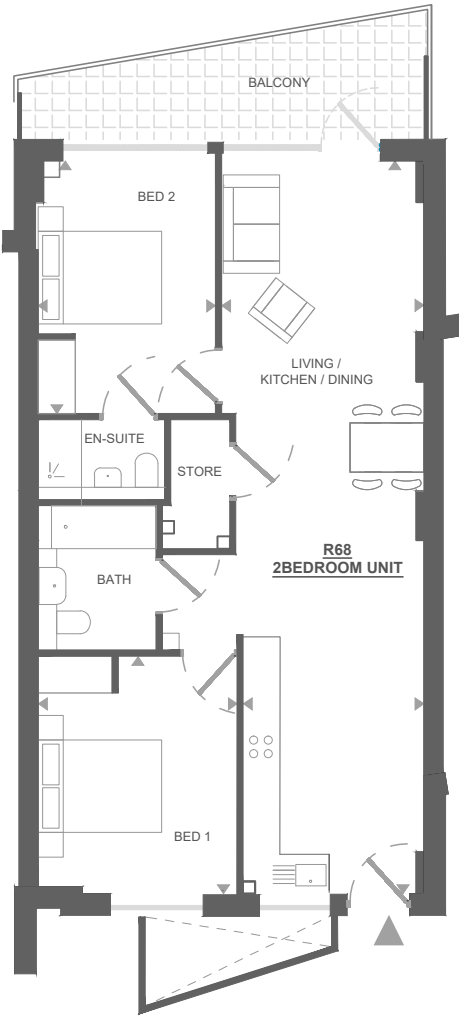
Kitchen/Living/Dining	6.1 × 6.9 m
Bedroom 1	3.0 × 4.8 m
Bedroom 2	3.1 × 3.7 m
Bedroom 3	3.3 × 2.9 m
Bedroom 4	3.3 × 3.1 m
Total	101 sqm
	1,087 sqft
Outside space	17.5 sqm
	188 sqft

All measurements are approximate and are taken at maximum widths and lengths of rooms. Plans are drawn to scale at a design phase and may vary during build. Kitchens and wardrobes sizes and layouts may differ to those shown. Furniture layouts are indicative only (where they appear). All total sqft and sqm are gross measurements. Window styles and positions may vary. Floorplans are not to scale.

YEO STREET, BOW, LONDON E3 | THEEXCHANGE3.CO.UK



Apartment R68
Core A
Sixth Floor
73.5 sqm / 791 sqft
2 Bedrooms
2 Bathrooms
Terrace



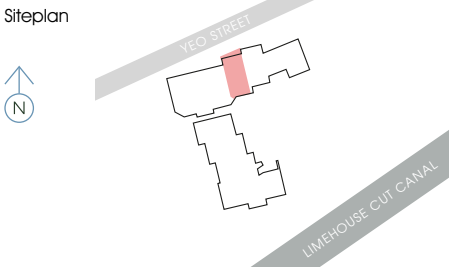
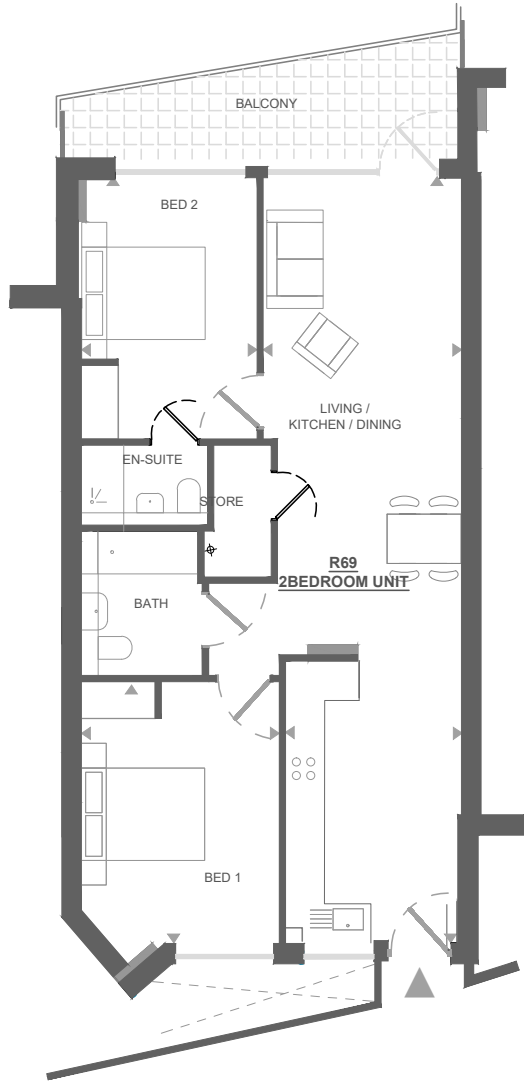
Kitchen/Living/Dining	3.3 × 11.9 m
Bedroom 1	3.3 × 3.9 m
Bedroom 2	2.9 × 4.1 m
Total	73.5 sqm
	791 sqft
Outside space	10 sqm
	108 sqft

All measurements are approximate and are taken at maximum widths and lengths of rooms. Plans are drawn to scale at a design phase and may vary during build. Kitchens and wardrobes sizes and layouts may differ to those shown. Furniture layouts are indicative only (where they appear). All total sqft and sqm are gross measurements. Window styles and positions may vary. Floorplans are not to scale.

YEO STREET, BOW, LONDON E3 | THEEXCHANGE3.CO.UK



Apartment R69
Core A
Sixth Floor
76 sqm / 818 sqft
2 Bedrooms
2 Bathrooms
Terrace

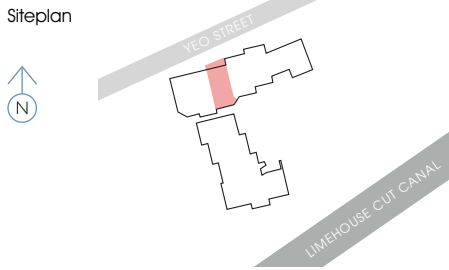
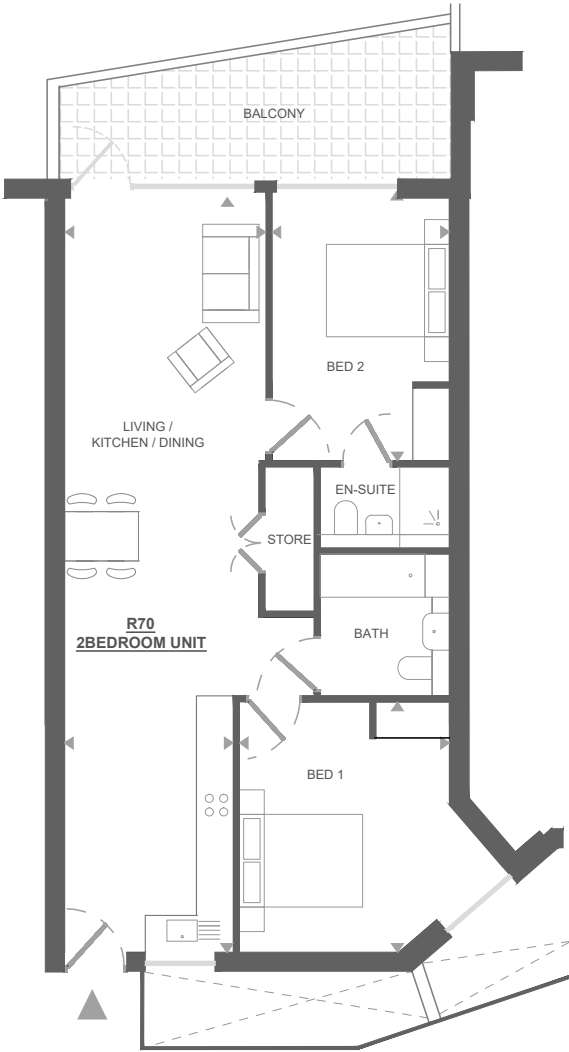


Kitchen/Living/Dining	3.2 × 12.4 m
Bedroom 1	3.2 × 4.2 m
Bedroom 2	2.9 × 4.2 m
Total	76 sqm
	818 sqft
Outside space	9.5 sqm
	102 sqft

All measurements are approximate and are taken at maximum widths and lengths of rooms. Plans are drawn to scale at a design phase and may vary during build. Kitchens and wardrobes sizes and layouts may differ to those shown. Furniture layouts are indicative only (where they appear). All total sqft and sqm are gross measurements. Window styles and positions may vary. Floorplans are not to scale.



Apartment R70
Core A
Sixth Floor
77.5 sqm / 834 sqft
2 Bedrooms
2 Bathrooms
Terrace

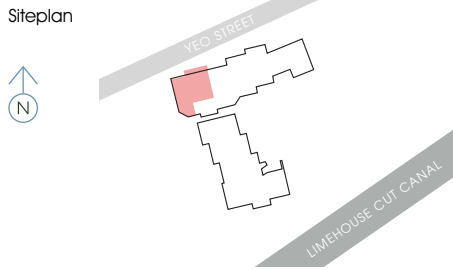
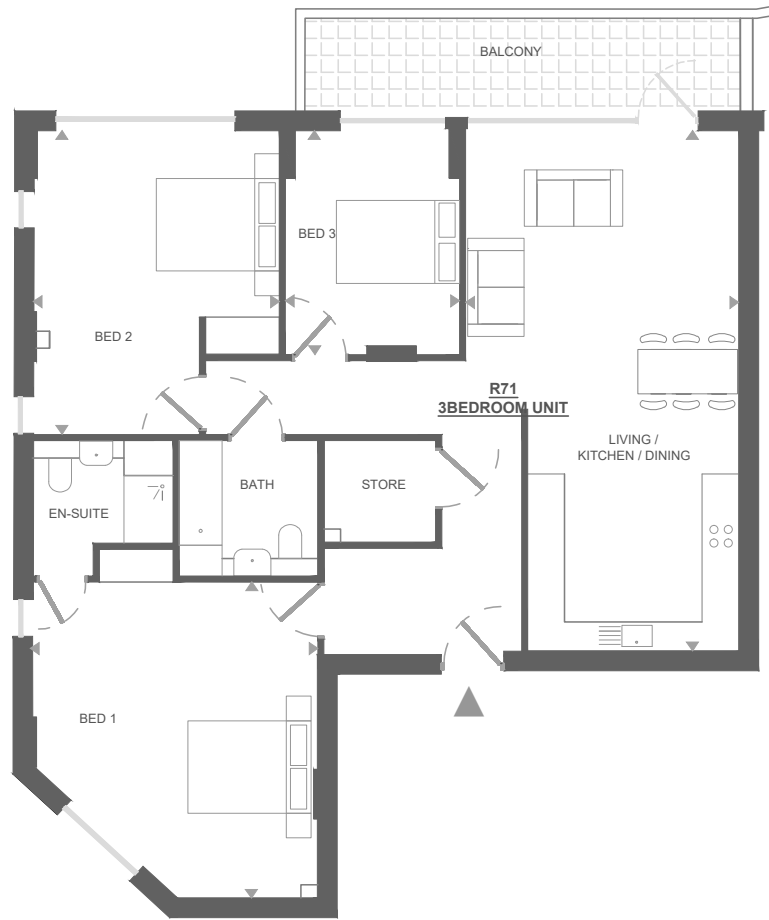


Kitchen/Living/Dining	3.4 × 12.3 m
Bedroom 1	3.4 × 4.1 m
Bedroom 2	2.8 × 4.3 m
Total	77.5 sqm
	834 sqft
Outside space	13 sqm
	140 sqft

All measurements are approximate and are taken at maximum widths and lengths of rooms. Plans are drawn to scale at a design phase and may vary during build. Kitchens and wardrobes sizes and layouts may differ to those shown. Furniture layouts are indicative only (where they appear). All total sqft and sqm are gross measurements. Window styles and positions may vary. Floorplans are not to scale.



Apartment R71
Core A
Sixth Floor
114.3 sqm / 1,230 sqft
3 Bedrooms
2 Bathrooms
Terrace



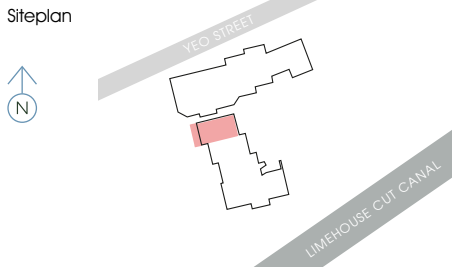
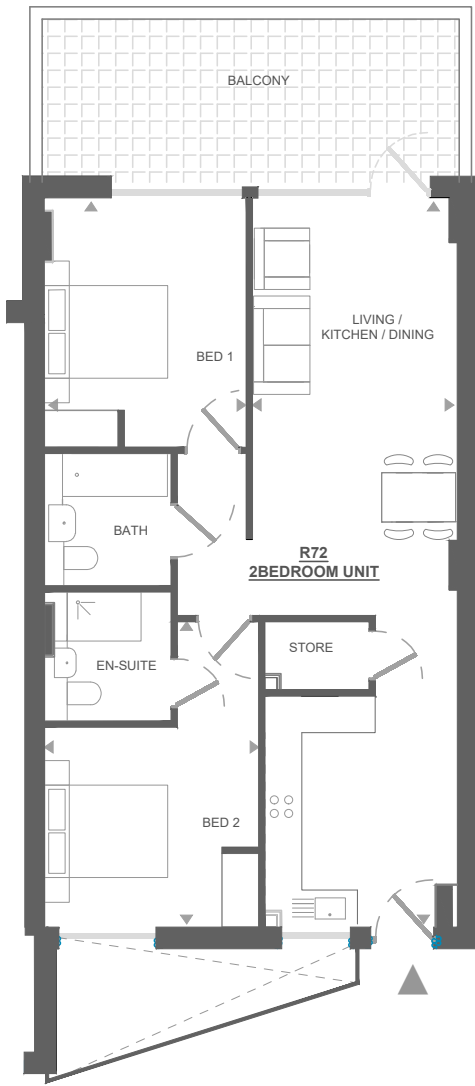
Kitchen/Living/Dining	4.4 × 8.6 m
Bedroom 1	4.7 × 5.0 m
Bedroom 2	4.0 × 5.4 m
Bedroom 3	2.8 × 3.7 m
Total	114.3 sqm
	1,230 sqft
Outside space	10.5 sqm
	113 sqft

All measurements are approximate and are taken at maximum widths and lengths of rooms. Plans are drawn to scale at a design phase and may vary during build. Kitchens and wardrobes sizes and layouts may differ to those shown. Furniture layouts are indicative only (where they appear). All total sqft and sqm are gross measurements. Window styles and positions may vary. Floorplans are not to scale.

YEO STREET, BOW, LONDON E3 | THEEXCHANGE3.CO.UK



Apartment R72
Core B
Sixth Floor
78.5 sqm / 845 sqft
2 Bedrooms
2 Bathrooms
Terrace



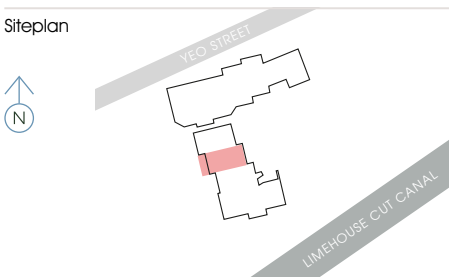
Kitchen/Living/Dining	3.3 × 11.8 m
Bedroom 1	3.3 × 4.1 m
Bedroom 2	3.5 × 5.0 m
Total	78.5 sqm
	845 sqft
Outside space	15 sqm
	161 sqft

All measurements are approximate and are taken at maximum widths and lengths of rooms. Plans are drawn to scale at a design phase and may vary during build. Kitchens and wardrobes sizes and layouts may differ to those shown. Furniture layouts are indicative only (where they appear). All total sqft and sqm are gross measurements. Window styles and positions may vary. Floorplans are not to scale.

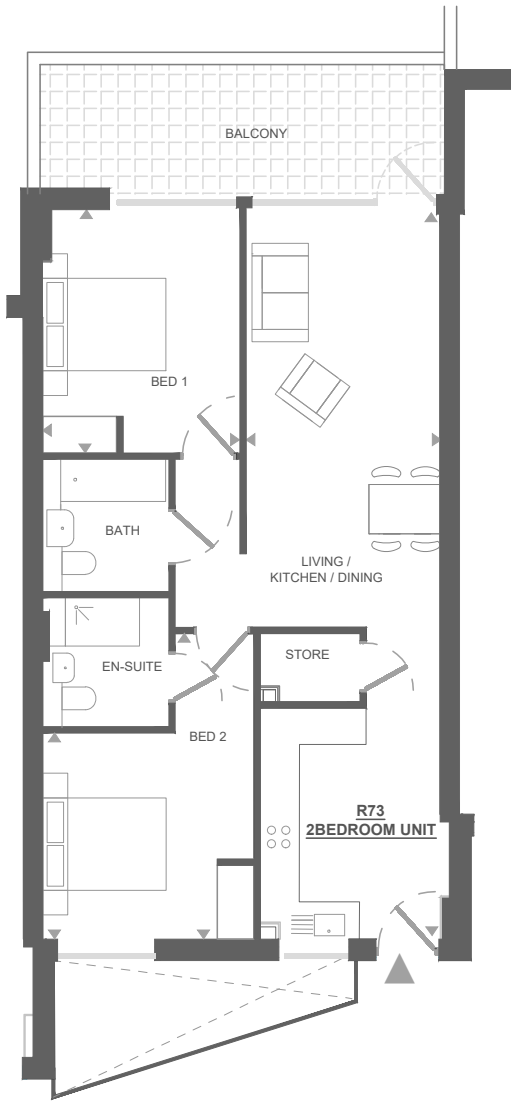
YEO STREET, BOW, LONDON E3 | THEEXCHANGE3.CO.UK



Apartment R73
Core B
Sixth Floor
76 sqm / 818 sqft
2 Bedrooms
2 Bathrooms
Terrace



Kitchen/Living/Dining	3.2 × 11.8 m
Bedroom 1	3.2 × 4.0 m
Bedroom 2	3.4 × 5.0 m
Total	76 sqm
	818 sqft
Outside space	14 sqm
	151 sqft

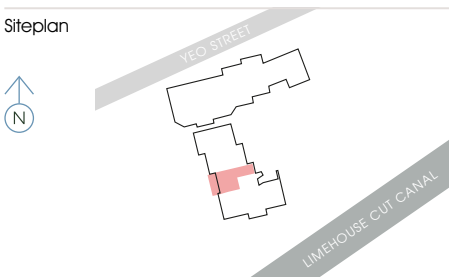


All measurements are approximate and are taken at maximum widths and lengths of rooms. Plans are drawn to scale at a design phase and may vary during build. Kitchens and wardrobes sizes and layouts may differ to those shown. Furniture layouts are indicative only (where they appear). All total sqft and sqm are gross measurements. Window styles and positions may vary. Floorplans are not to scale.

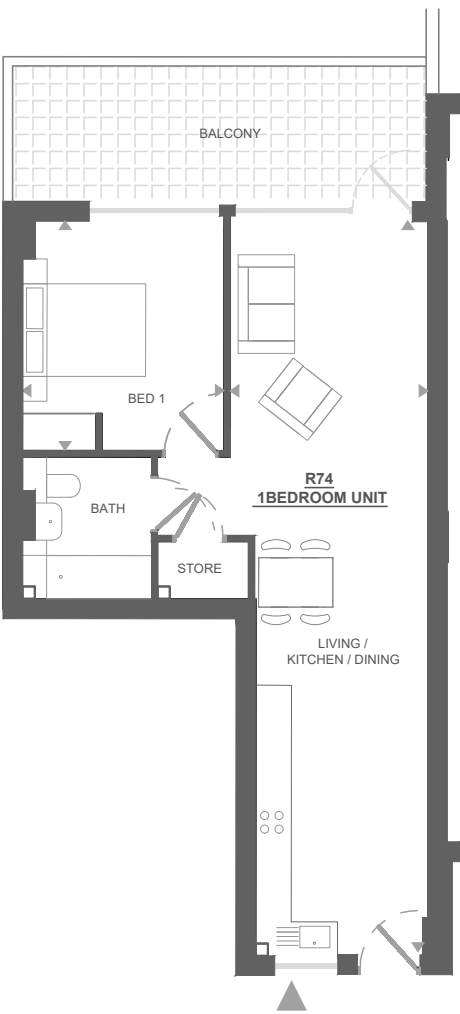
YEO STREET, BOW, LONDON E3 | THEEXCHANGE3.CO.UK



Apartment R74
Core B
Sixth Floor
55 sqm / 592 sqft
1 Bedroom
1 Bathroom
Terrace



Kitchen/Living/Dining	3.1 × 12.0 m
Bedroom 1	3.2 × 3.8 m
Total	55 sqm
	592 sqft
Outside space	14.5 sqm
	156 sqft

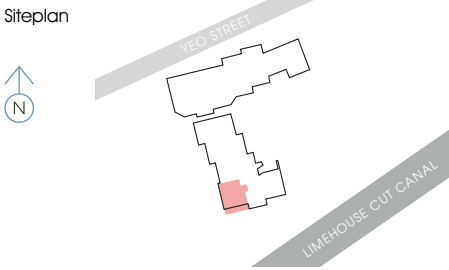
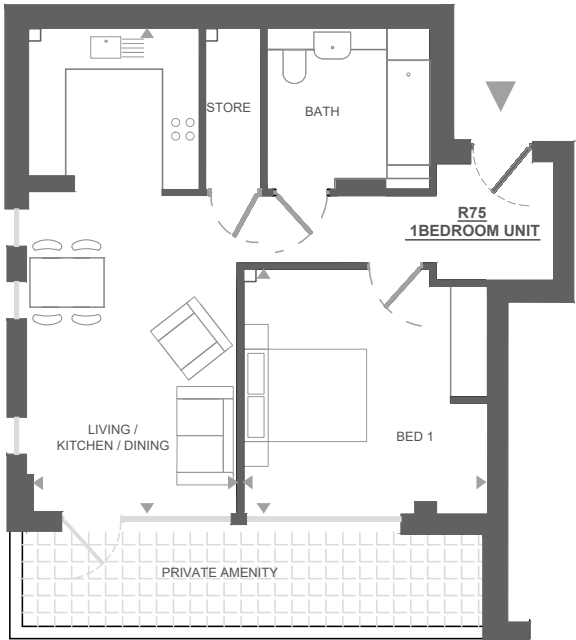


All measurements are approximate and are taken at maximum widths and lengths of rooms. Plans are drawn to scale at a design phase and may vary during build. Kitchens and wardrobes sizes and layouts may differ to those shown. Furniture layouts are indicative only (where they appear). All total sqft and sqm are gross measurements. Window styles and positions may vary. Floorplans are not to scale.

YEO STREET, BOW, LONDON E3 | THEEXCHANGE3.CO.UK

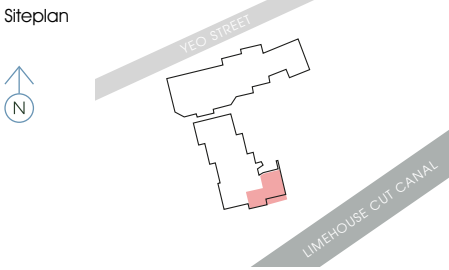


Apartment R75
Core B
Sixth Floor
59 sqm / 635 sqft
1 Bedroom
1 Bathroom
Terrace



Kitchen/Living/Dining	3.4 × 8.0 m
Bedroom 1	3.9 × 4.1 m
Total	59 sqm
	635 sqft
Outside space	12 sqm
	129 sqft

Apartment R76
Core B
Sixth Floor
78 sqm / 840 sqft
2 Bedrooms
2 Bathrooms
Terrace



Kitchen/Living/Dining	6.4 × 8.0 m
Bedroom 1	3.7 × 5.1 m
Bedroom 2	3.3 × 4.1 m
Total	78 sqm
	840 sqft
Outside space	10.3 sqm
	111 sqft



All measurements are approximate and are taken at maximum widths and lengths of rooms. Plans are drawn to scale at a design phase and may vary during build. Kitchens and wardrobes sizes and layouts may differ to those shown. Furniture layouts are indicative only (where they appear). All total sqft and sqm are gross measurements. Window styles and positions may vary. Floorplans are not to scale.

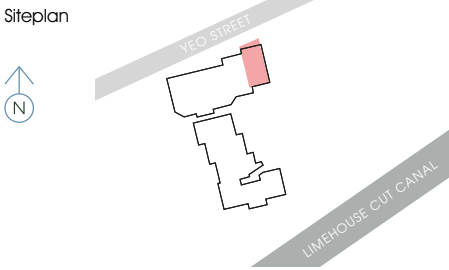
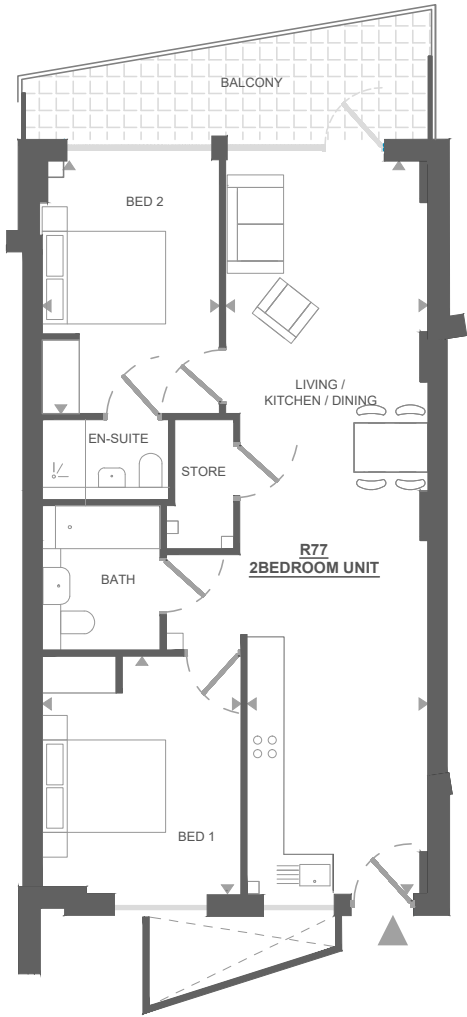
YEO STREET, BOW, LONDON E3 | THEEXCHANGE3.CO.UK



All measurements are approximate and are taken at maximum widths and lengths of rooms. Plans are drawn to scale at a design phase and may vary during build. Kitchens and wardrobes sizes and layouts may differ to those shown. Furniture layouts are indicative only (where they appear). All total sqft and sqm are gross measurements. Window styles and positions may vary. Floorplans are not to scale.

YEO STREET, BOW, LONDON E3 | THEEXCHANGE3.CO.UK

Apartment R77
Core A
Seventh Floor
73.5 SQM / 791 SQFT
2 Bedrooms
2 Bathrooms
Terrace

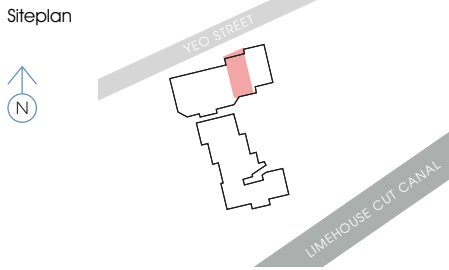
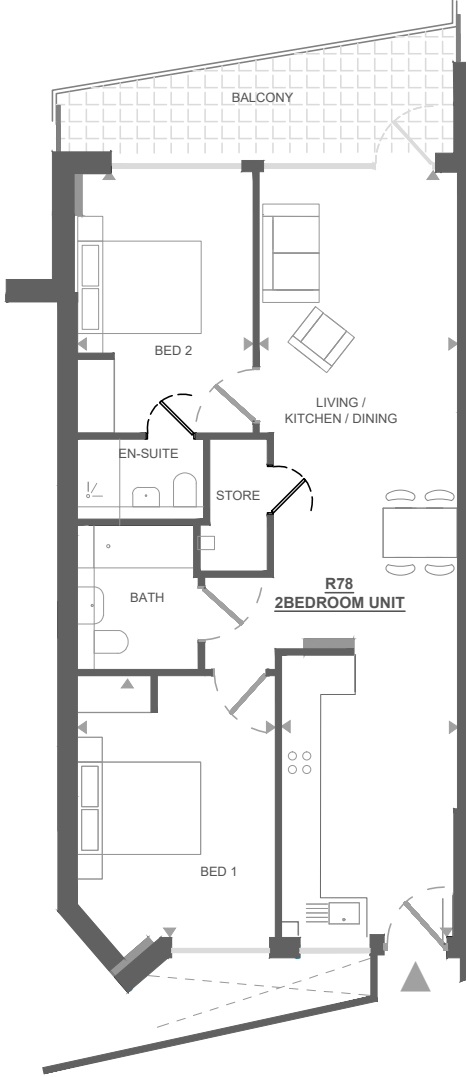


Kitchen/Living/Dining	3.3 × 11.9 m
Bedroom 1	3.3 × 3.9 m
Bedroom 2	2.9 × 4.1 m
Total	73.5 sqm
	791 sqft
Outside space	10 sqm
	108 sqft

All measurements are approximate and are taken at maximum widths and lengths of rooms. Plans are drawn to scale at a design phase and may vary during build. Kitchens and wardrobes sizes and layouts may differ to those shown. Furniture layouts are indicative only (where they appear). All total sqft and sqm are gross measurements. Window styles and positions may vary. Floorplans are not to scale.



Apartment R78
Core A
Seventh Floor
76 SQM / 818 SQFT
2 Bedrooms
2 Bathrooms
Terrace

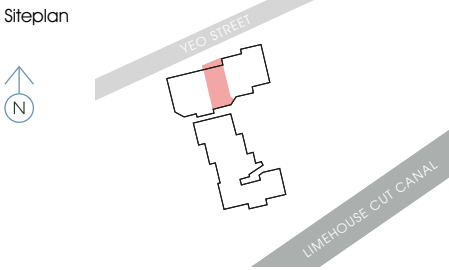
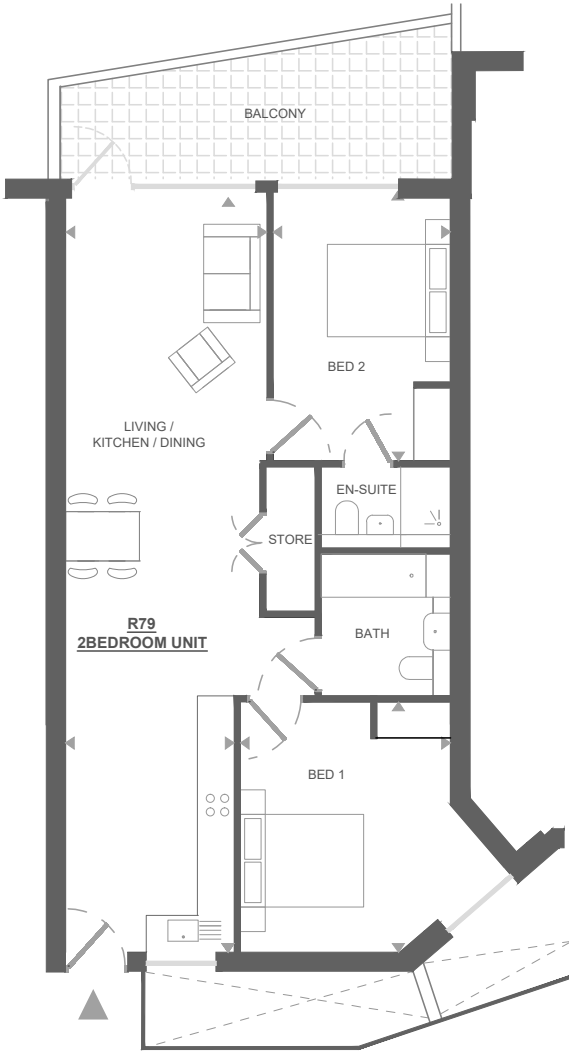


Kitchen/Living/Dining	3.2 × 12.4 m
Bedroom 1	3.2 × 4.2 m
Bedroom 2	2.9 × 4.2 m
Total	76 sqm
	818 sqft
Outside space	9.5 sqm
	102 sqft

All measurements are approximate and are taken at maximum widths and lengths of rooms. Plans are drawn to scale at a design phase and may vary during build. Kitchens and wardrobes sizes and layouts may differ to those shown. Furniture layouts are indicative only (where they appear). All total sqft and sqm are gross measurements. Window styles and positions may vary. Floorplans are not to scale.



Apartment R79
Core A
Seventh Floor
77.5 sqm / 834 sqft
2 Bedrooms
2 Bathrooms
Terrace

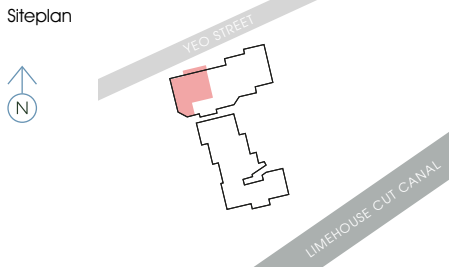
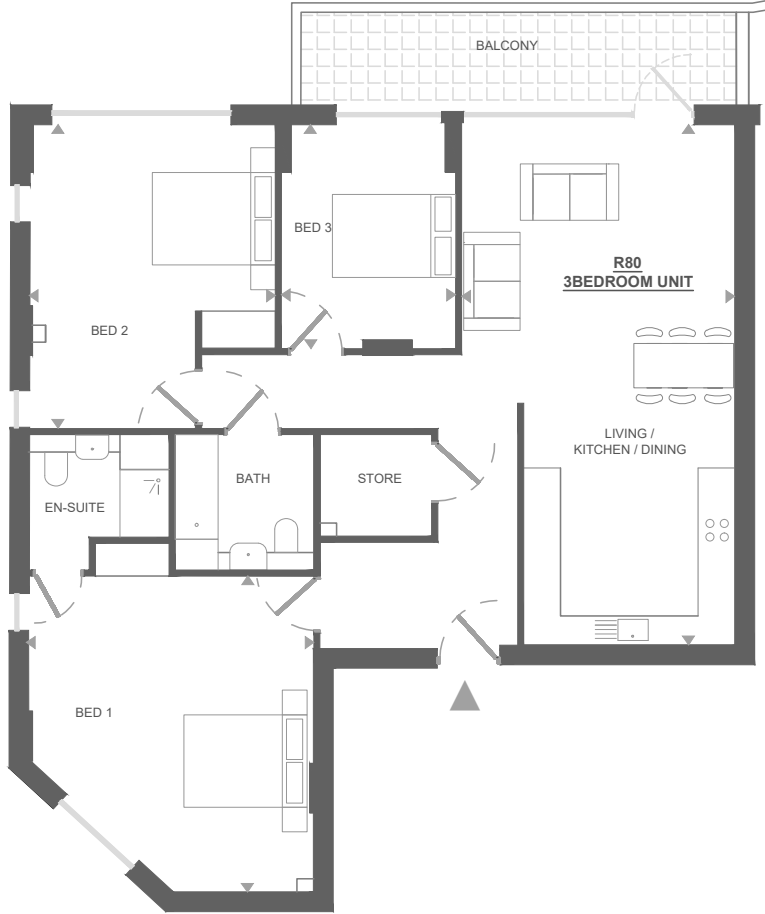


Kitchen/Living/Dining	3.4 × 12.3 m
Bedroom 1	3.4 × 4.1 m
Bedroom 2	2.8 × 4.3 m
Total	77.5 sqm
	834 sqft
Outside space	13 sqm
	140 sqft

All measurements are approximate and are taken at maximum widths and lengths of rooms. Plans are drawn to scale at a design phase and may vary during build. Kitchens and wardrobes sizes and layouts may differ to those shown. Furniture layouts are indicative only (where they appear). All total sqft and sqm are gross measurements. Window styles and positions may vary. Floorplans are not to scale.



Apartment R80
Core A
Seventh Floor
114.5 sqm / 1,233 sqft
3 Bedrooms
2 Bathrooms
Terrace

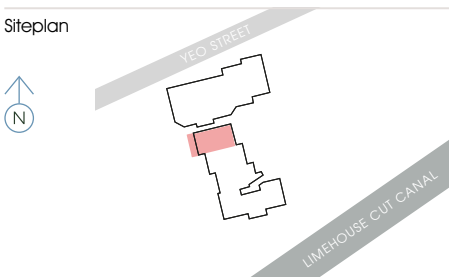


Kitchen/Living/Dining	4.4 × 8.6 m
Bedroom 1	4.7 × 5.0 m
Bedroom 2	4.0 × 5.4 m
Bedroom 3	2.8 × 3.7 m
Total	114.5 sqm
	1,233 sqft
Outside space	10.5 sqm
	113 sqft

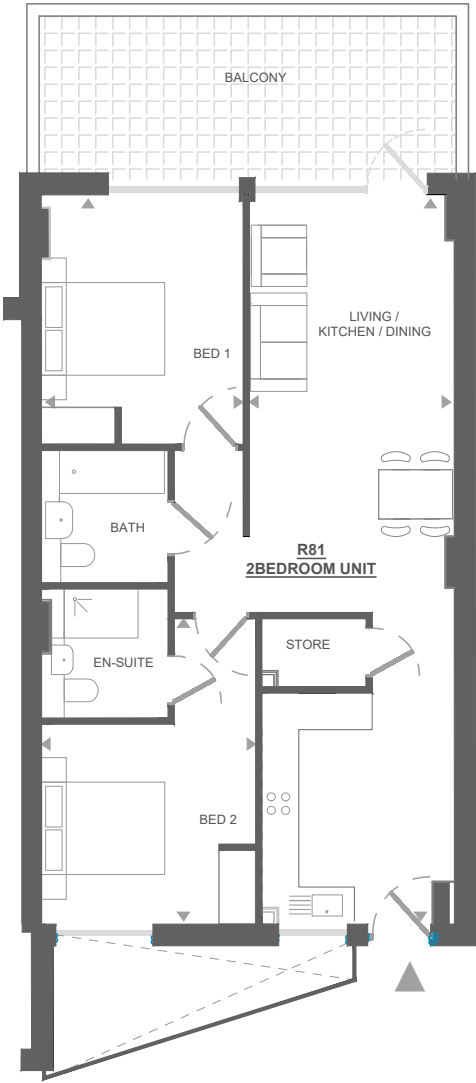
All measurements are approximate and are taken at maximum widths and lengths of rooms. Plans are drawn to scale at a design phase and may vary during build. Kitchens and wardrobes sizes and layouts may differ to those shown. Furniture layouts are indicative only (where they appear). All total sqft and sqm are gross measurements. Window styles and positions may vary. Floorplans are not to scale.



Apartment R81
Core B
Seventh Floor
78.5 sqm / 845 sqft
2 Bedrooms
2 Bathrooms
Terrace



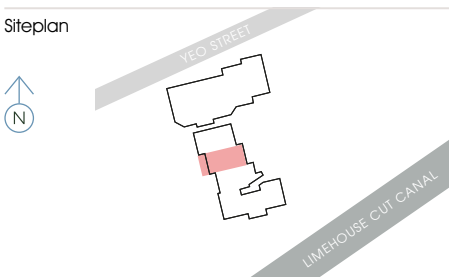
Kitchen/Living/Dining	3.3 × 11.8 m
Bedroom 1	3.3 × 4.1 m
Bedroom 2	3.5 × 5.0 m
Total	78.5 sqm
	845 sqft
Outside space	15 sqm
	161 sqft



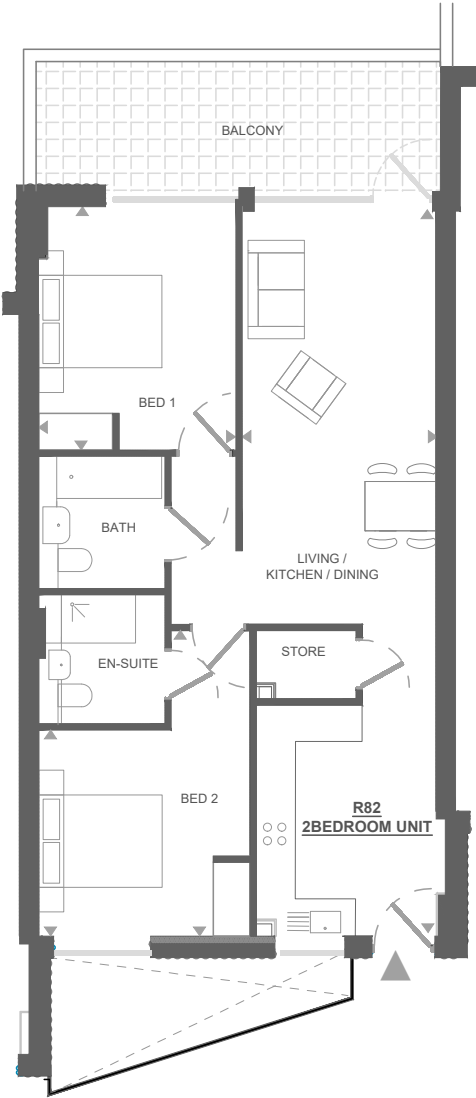
All measurements are approximate and are taken at maximum widths and lengths of rooms. Plans are drawn to scale at a design phase and may vary during build. Kitchens and wardrobes sizes and layouts may differ to those shown. Furniture layouts are indicative only (where they appear). All total sqft and sqm are gross measurements. Window styles and positions may vary. Floorplans are not to scale.



Apartment R82
Core B
Seventh Floor
76 sqm / 818 sqft
2 Bedrooms
2 Bathrooms
Terrace



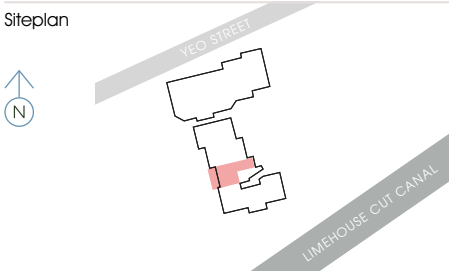
Kitchen/Living/Dining	3.2 × 11.8 m
Bedroom 1	3.2 × 4.0 m
Bedroom 2	3.4 × 5.0 m
Total	76 sqm
	818 sqft
Outside space	14 sqm
	151 sqft



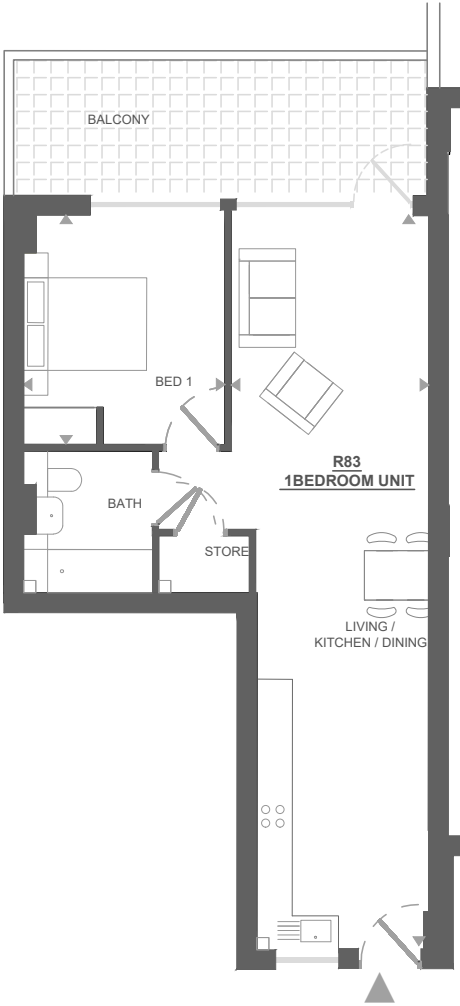
All measurements are approximate and are taken at maximum widths and lengths of rooms. Plans are drawn to scale at a design phase and may vary during build. Kitchens and wardrobes sizes and layouts may differ to those shown. Furniture layouts are indicative only (where they appear). All total sqft and sqm are gross measurements. Window styles and positions may vary. Floorplans are not to scale.



Apartment R83
Core B
Seventh Floor
55 sqm / 592 sqft
1 Bedroom
1 Bathroom
Terrace



Kitchen/Living/Dining	3.1 × 12.0 m
Bedroom 1	3.2 × 3.8 m
Total	55 sqm
	592 sqft
Outside space	14.2 sqm
	153 sqft

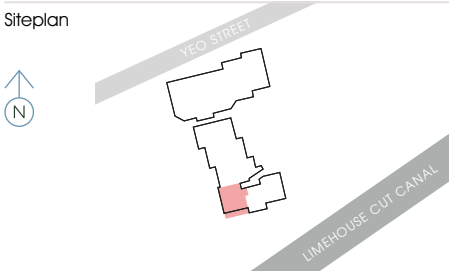


All measurements are approximate and are taken at maximum widths and lengths of rooms. Plans are drawn to scale at a design phase and may vary during build. Kitchens and wardrobes sizes and layouts may differ to those shown. Furniture layouts are indicative only (where they appear). All total sqft and sqm are gross measurements. Window styles and positions may vary. Floorplans are not to scale.

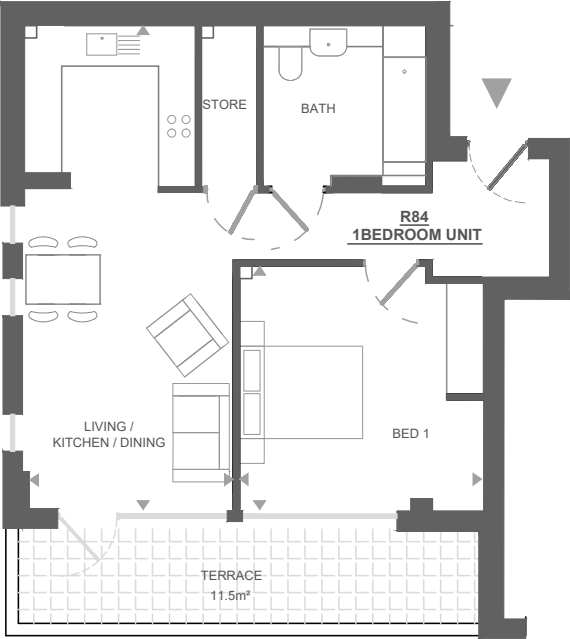
YEO STREET, BOW, LONDON E3 | THEEXCHANGE3.CO.UK



Apartment R84
Core B
Seventh Floor
59 sqm / 635 sqft
1 Bedroom
1 Bathroom
Terrace



Kitchen/Living/Dining	3.4 × 8.0 m
Bedroom 1	3.9 × 4.1 m
Total	59 sqm
	635 sqft
Outside space	12 sqm
	129 sqft

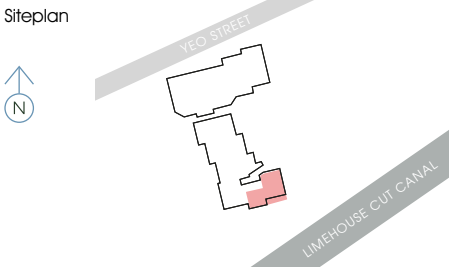
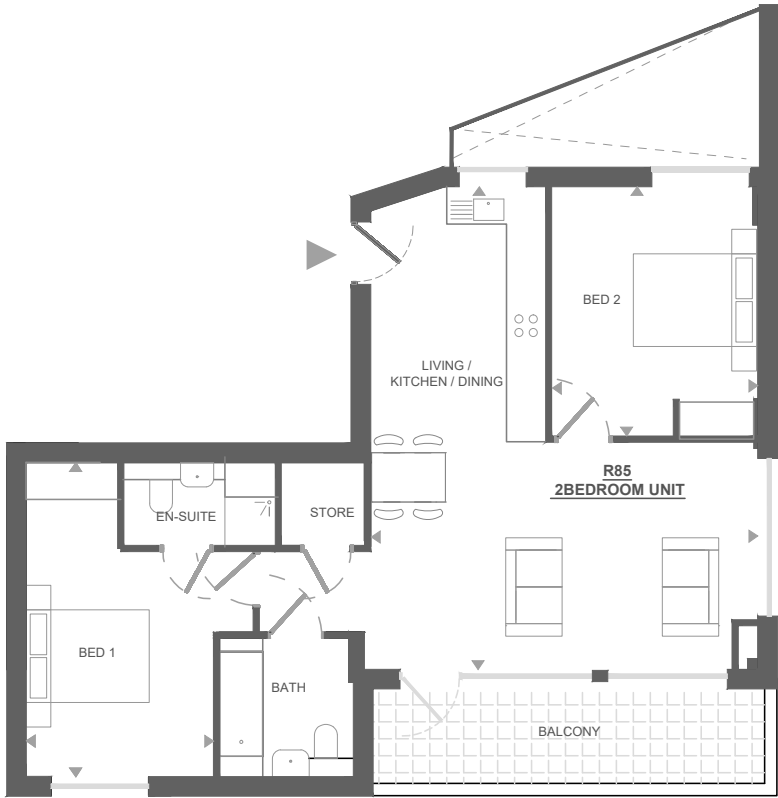


All measurements are approximate and are taken at maximum widths and lengths of rooms. Plans are drawn to scale at a design phase and may vary during build. Kitchens and wardrobes sizes and layouts may differ to those shown. Furniture layouts are indicative only (where they appear). All total sqft and sqm are gross measurements. Window styles and positions may vary. Floorplans are not to scale.

YEO STREET, BOW, LONDON E3 | THEEXCHANGE3.CO.UK



Apartment R85
Core B
Seventh Floor
78 sqm / 840 sqft
2 Bedrooms
2 Bathrooms
Terrace

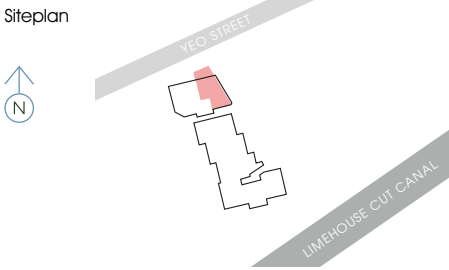
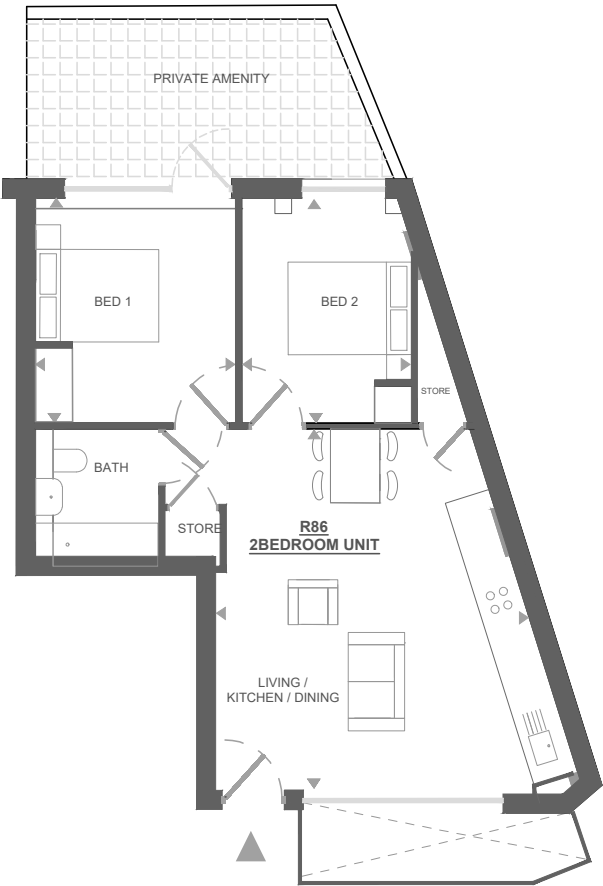


Kitchen/Living/Dining	6.4 × 8.0 m
Bedroom 1	3.7 × 5.1 m
Bedroom 2	3.3 × 4.1 m
Total	78 sqm
	840 sqft
Outside space	10.3 sqm
	111 sqft

All measurements are approximate and are taken at maximum widths and lengths of rooms. Plans are drawn to scale at a design phase and may vary during build. Kitchens and wardrobes sizes and layouts may differ to those shown. Furniture layouts are indicative only (where they appear). All total sqft and sqm are gross measurements. Window styles and positions may vary. Floorplans are not to scale.



Apartment R86
Core A
Eighth Floor
61 sqm / 657 sqft
2 Bedrooms
2 Bathrooms
Terrace

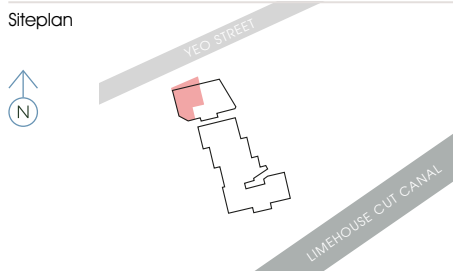


Kitchen/Living/Dining	5.1 × 6.1 m
Bedroom 1	3.3 × 3.6 m
Bedroom 2	2.8 × 3.6 m
Total	61 sqm
	657 sqft
Outside space	12 sqm
	129 sqft

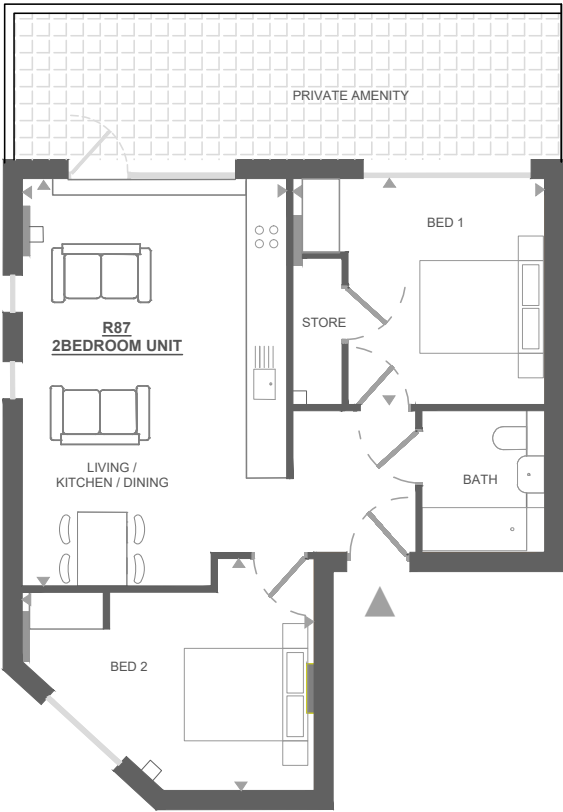
All measurements are approximate and are taken at maximum widths and lengths of rooms. Plans are drawn to scale at a design phase and may vary during build. Kitchens and wardrobes sizes and layouts may differ to those shown. Furniture layouts are indicative only (where they appear). All total sqft and sqm are gross measurements. Window styles and positions may vary. Floorplans are not to scale.



Apartment R87
Core A
Eighth Floor
66 sqm / 710 sqft
2 Bedrooms
1 Bathroom
Terrace



Kitchen/Living/Dining	4.2 × 6.6 m
Bedroom 1	4.2 × 3.6 m
Bedroom 2	4.7 × 3.8 m
Total	66 sqm
	710 sqft
Outside space	18.5 sqm
	199 sqft

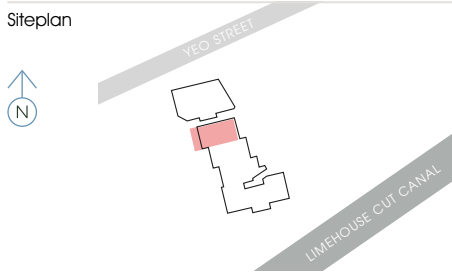


All measurements are approximate and are taken at maximum widths and lengths of rooms. Plans are drawn to scale at a design phase and may vary during build. Kitchens and wardrobes sizes and layouts may differ to those shown. Furniture layouts are indicative only (where they appear). All total sqft and sqm are gross measurements. Window styles and positions may vary. Floorplans are not to scale.

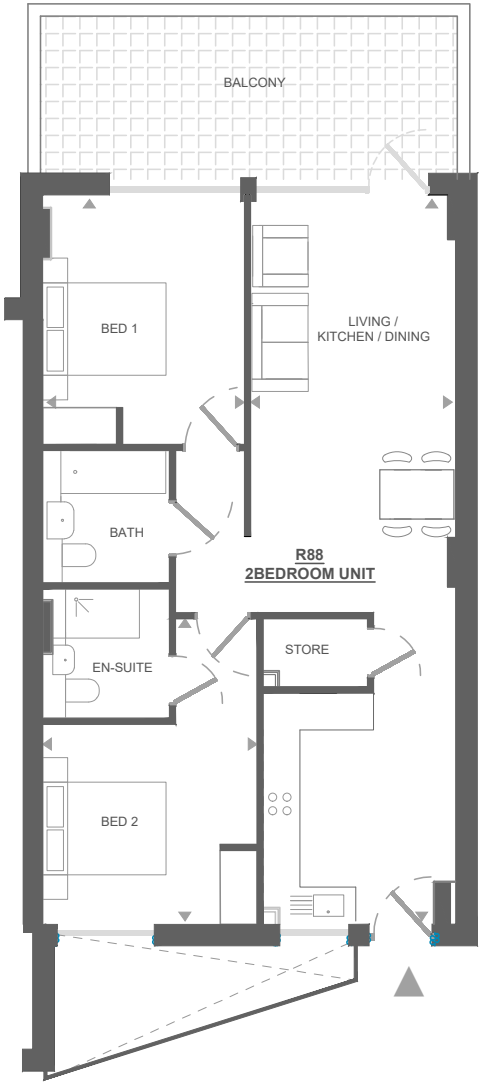
YEO STREET, BOW, LONDON E3 | THEEXCHANGE3.CO.UK



Apartment R88
Core B
Eighth Floor
78.5 sqm / 845 sqft
2 Bedrooms
2 Bathrooms
Terrace



Kitchen/Living/Dining	3.3 × 11.8 m
Bedroom 1	3.3 × 4.1 m
Bedroom 2	3.5 × 5.0 m
Total	78.5 sqm
	845 sqft
Outside space	15 sqm
	161 sqft

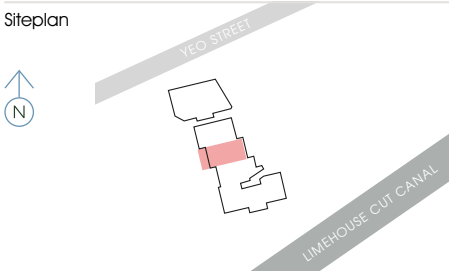


All measurements are approximate and are taken at maximum widths and lengths of rooms. Plans are drawn to scale at a design phase and may vary during build. Kitchens and wardrobes sizes and layouts may differ to those shown. Furniture layouts are indicative only (where they appear). All total sqft and sqm are gross measurements. Window styles and positions may vary. Floorplans are not to scale.

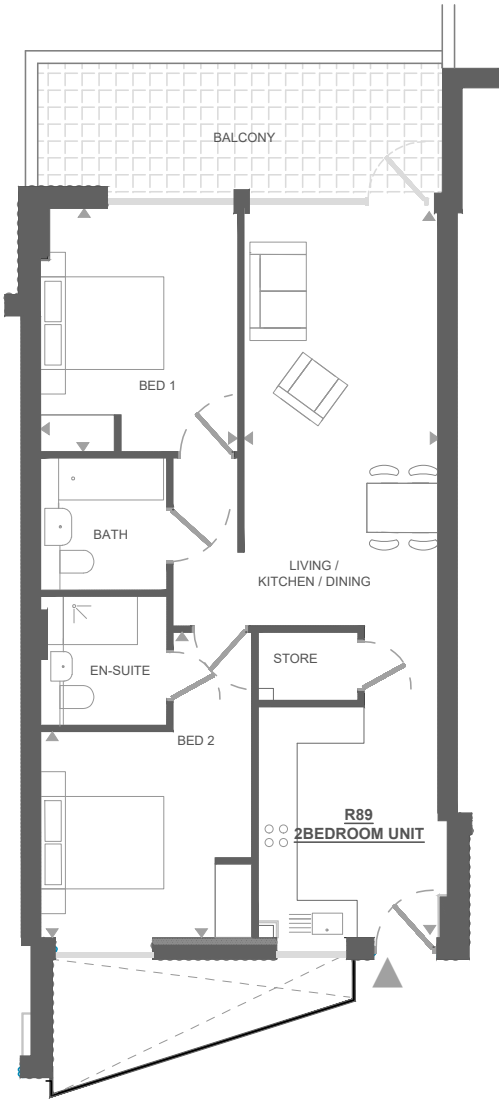
YEO STREET, BOW, LONDON E3 | THEEXCHANGE3.CO.UK



Apartment R89
Core B
Eighth Floor
76 sqm / 818 sqft
2 Bedrooms
2 Bathrooms
Terrace



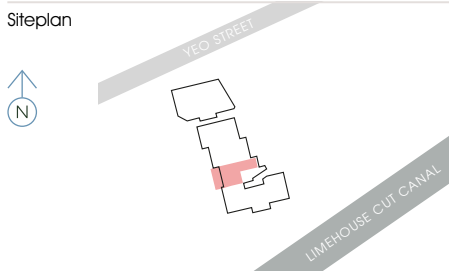
Kitchen/Living/Dining	3.2 × 11.8 m
Bedroom 1	3.2 × 4.0 m
Bedroom 2	3.4 × 5.0 m
Total	76 sqm
	818 sqft
Outside space	14 sqm
	151 sqft



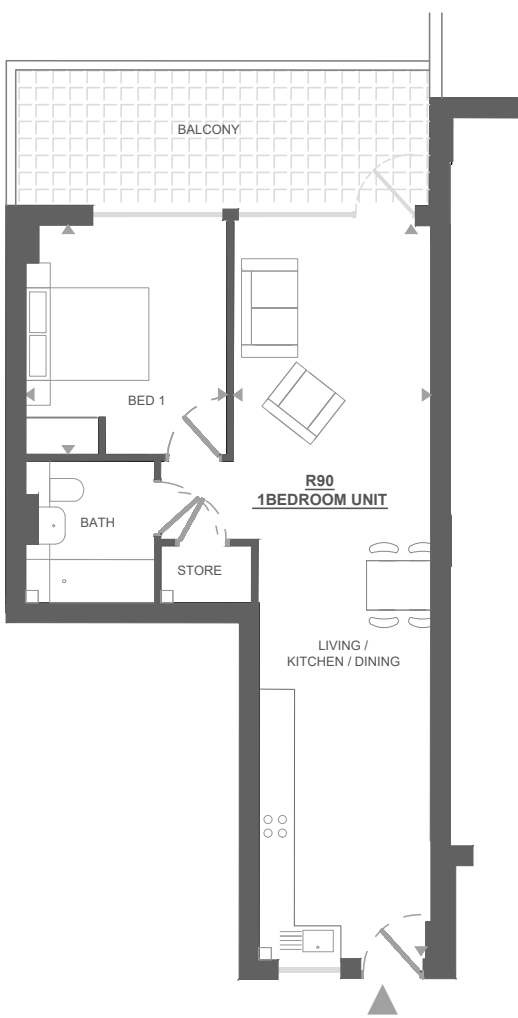
All measurements are approximate and are taken at maximum widths and lengths of rooms. Plans are drawn to scale at a design phase and may vary during build. Kitchens and wardrobes sizes and layouts may differ to those shown. Furniture layouts are indicative only (where they appear). All total sqft and sqm are gross measurements. Window styles and positions may vary. Floorplans are not to scale.



Apartment R90
Core B
Eighth Floor
55 sqm / 592 sqft
1 Bedroom
1 Bathroom
Terrace



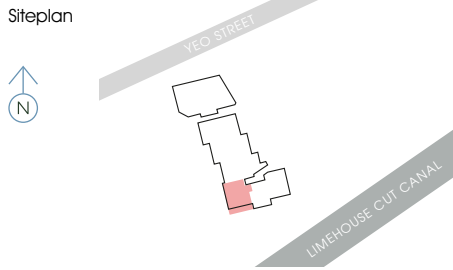
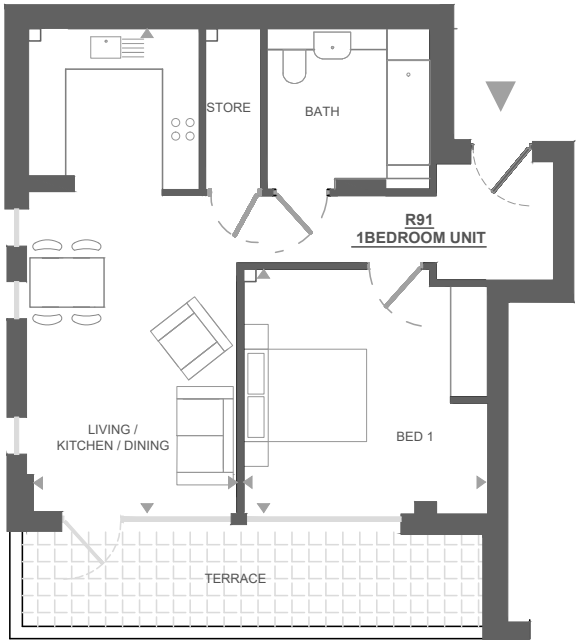
Kitchen/Living/Dining	3.1 × 12.0 m
Bedroom 1	3.2 × 3.8 m
Total	55 sqm
	592 sqft
Outside space	14.2 sqm
	153 sqft



All measurements are approximate and are taken at maximum widths and lengths of rooms. Plans are drawn to scale at a design phase and may vary during build. Kitchens and wardrobes sizes and layouts may differ to those shown. Furniture layouts are indicative only (where they appear). All total sqft and sqm are gross measurements. Window styles and positions may vary. Floorplans are not to scale.



Apartment R91
Core B
Eighth Floor
59 sqm / 635 sqft
1 Bedroom
1 Bathroom
Terrace



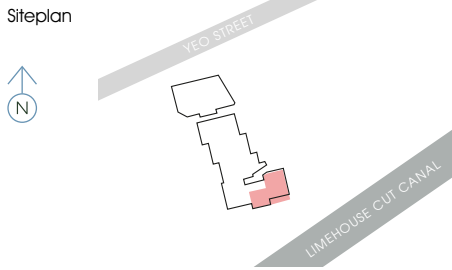
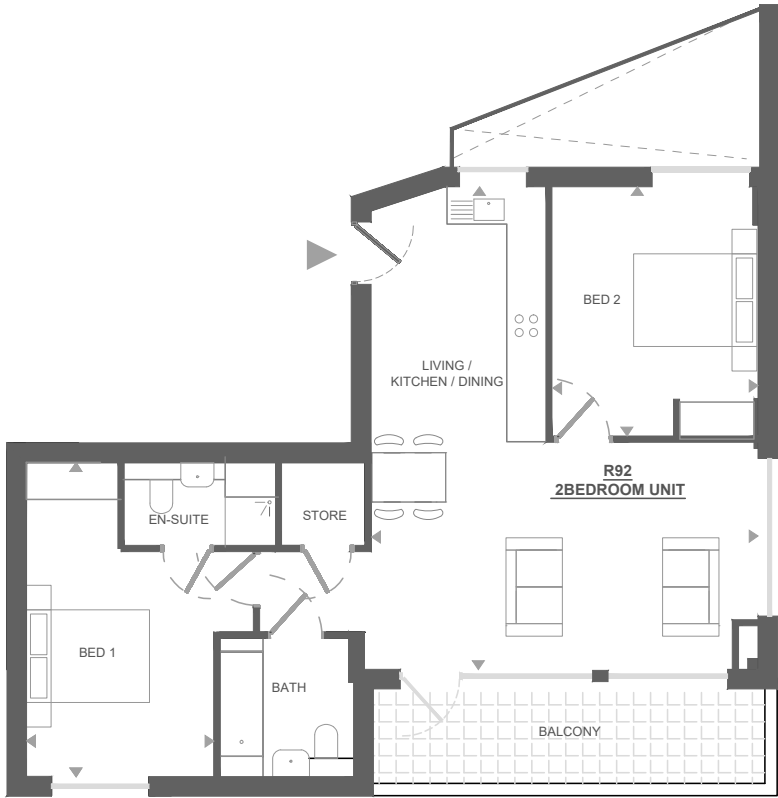
Kitchen/Living/Dining	3.4 × 8.0 m
Bedroom 1	3.9 × 4.1 m
Total	59 sqm
	635 sqft
Outside space	12 sqm
	129 sqft

All measurements are approximate and are taken at maximum widths and lengths of rooms. Plans are drawn to scale at a design phase and may vary during build. Kitchens and wardrobes sizes and layouts may differ to those shown. Furniture layouts are indicative only (where they appear). All total sqft and sqm are gross measurements. Window styles and positions may vary. Floorplans are not to scale.

YEO STREET, BOW, LONDON E3 | THEEXCHANGE3.CO.UK



Apartment R92
Core B
Eighth Floor
78 sqm / 840 sqft
2 Bedrooms
2 Bathrooms
Terrace



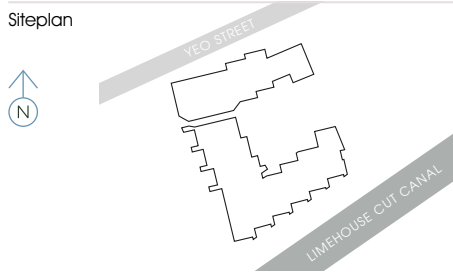
Kitchen/Living/Dining	6.4 × 8.0 m
Bedroom 1	3.7 × 5.1 m
Bedroom 2	3.3 × 4.1 m
Total	78 sqm
	840 sqft
Outside space	10.3 sqm
	111 sqft

All measurements are approximate and are taken at maximum widths and lengths of rooms. Plans are drawn to scale at a design phase and may vary during build. Kitchens and wardrobes sizes and layouts may differ to those shown. Furniture layouts are indicative only (where they appear). All total sqft and sqm are gross measurements. Window styles and positions may vary. Floorplans are not to scale.

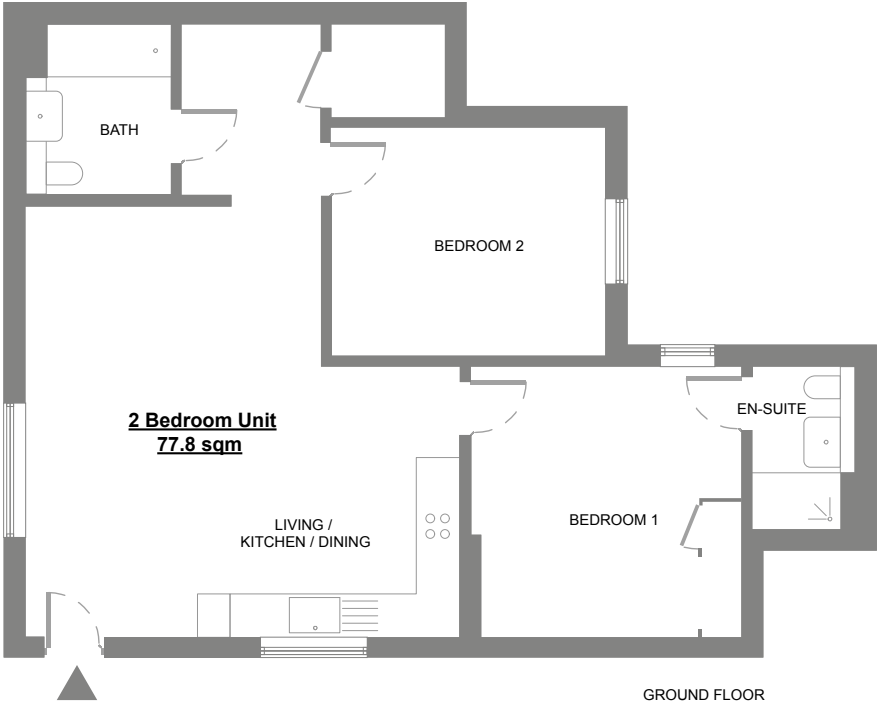
YEO STREET, BOW, LONDON E3 | THEEXCHANGE3.CO.UK



Show Flat
Sample Layout
Ground Floor
77.8 sqm / 837 sqft
2 Bedrooms
2 Bathrooms



Kitchen/Living/Dining	6.11 × 6.06 m
Bedroom 1	3.81 × 3.8 m
Bedroom 2	3.87 × 2.8 m
Total	77.8 sqm
	837 sqft



All measurements are approximate and are taken at maximum widths and lengths of rooms. Plans are drawn to scale at a design phase and may vary during build. Kitchens and wardrobes sizes and layouts may differ to those shown. Furniture layouts are indicative only (where they appear). All total sqft and sqm are gross measurements. Window styles and positions may vary. Floorplans are not to scale.

YEO STREET, BOW, LONDON E3 | THEEXCHANGE3.CO.UK



the
exchange
e3

Disclaimer: While reasonable effort has been made to ensure the accuracy of this document and the information contained within, this cannot be guaranteed and no representation or warranty is made in that regard and all such representations and warranties (whether express, implied or otherwise) are excluded to the extent permitted by law. The specification included herein is the anticipated specification as at the date of this brochure and is designed specifically as a guide and we reserve the right to amend the specification where necessary or desirable and without notice. Computer generated images are indicative of the quality and style of the development and are not intended to represent fully accurate depictions. Apartment and amenity designs, sizes, layouts and other details are indicative only and may be subject to change. Any areas, measurements or distances shown in any text or plan are indicative and for information purposes only and may be different once actually constructed. Any reference to use of the property does not mean that any necessary planning, building regulations or other consent has been obtained. Variances occur between apartment types. Please refer to the sales team for details of a particular apartment. A management company will be appointed to provide building management services. Please note that the design of this development is ongoing and certain items of the specification may be amended to an item of equivalent quality without notice. Plans are not to scale. All measurements are approximate. All furniture and planting is shown for context only, not supplied with the apartment. Prices are subject to change without notice.





020 3967 7567

enquiries@theexchange3.co.uk

dominusnewhomes.co.uk

