



Cotton Avenue, W3

£315,000

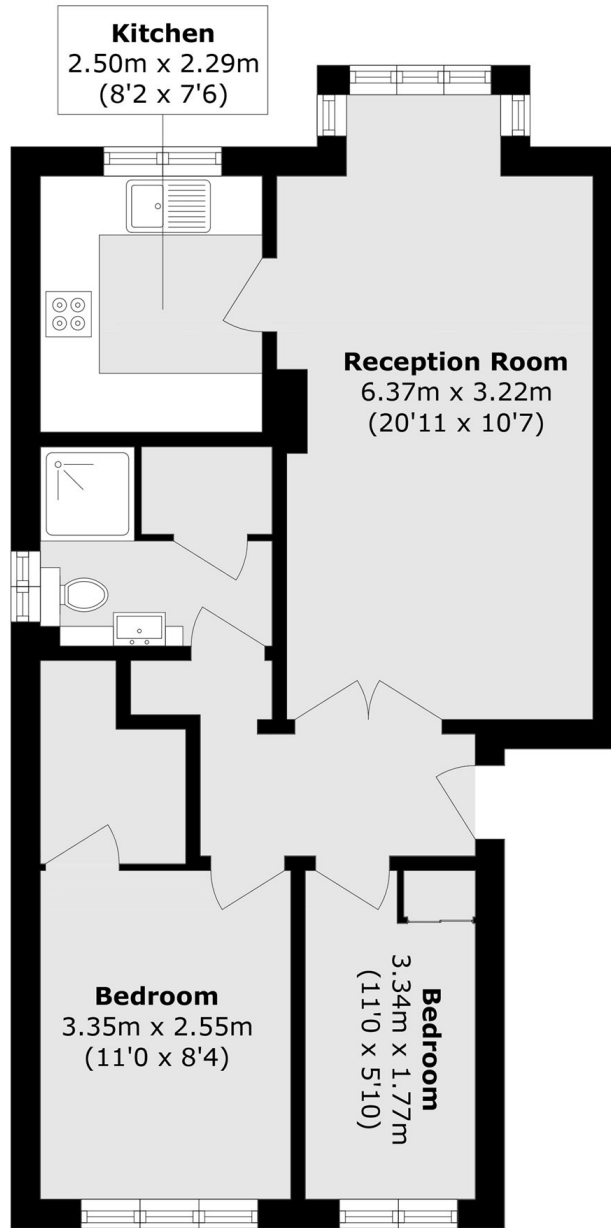
A well-maintained two-bedroom first floor flat apartment in this purpose built building, The property has a separate kitchen and reception room and is flooded with natural light. Additionally there is allocated parking and will be sold with no onward chain,

Just over half a mile from Acton Main Line station (Elizabeth line) and North Acton (Central line) tube station. Local shops are located 650m away.

Features

- Two Bedrooms
- Purpose Built
- Long Lease
- Garden Access
- Allocated Parking
- No Onward Chain

Cotton Avenue,
London, W3



Total area (approx.): 54.1 sq. m (582.3 sq. ft)