



City Tower

3 Limeharbour, E14

£2,750 per month
(£634.62 per week)

Comprising 2 double bedrooms, 2 bathrooms, open plan fully fitted kitchen with reception leading onto a balcony and allocated parking. The development boasts a 24 hour porter and is ideally located close to Cross Harbour DLR.

CHESTERTONS



City Tower

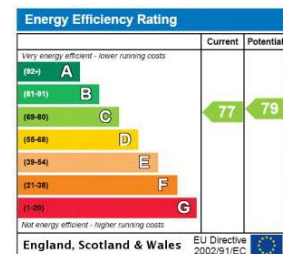
3 Limeharbour, E14

-



Comprising 2 double bedrooms, 2 bathrooms, open plan fully fitted kitchen with reception leading onto a balcony and allocated parking. The development boasts a 24 hour porter and is ideally located close to Cross Harbour DLR.

Minimum Term: months
Deposit Required: £3,173.08
Local Authority: Tower Hamlets
Council Tax Band: E
EPC Rating: C

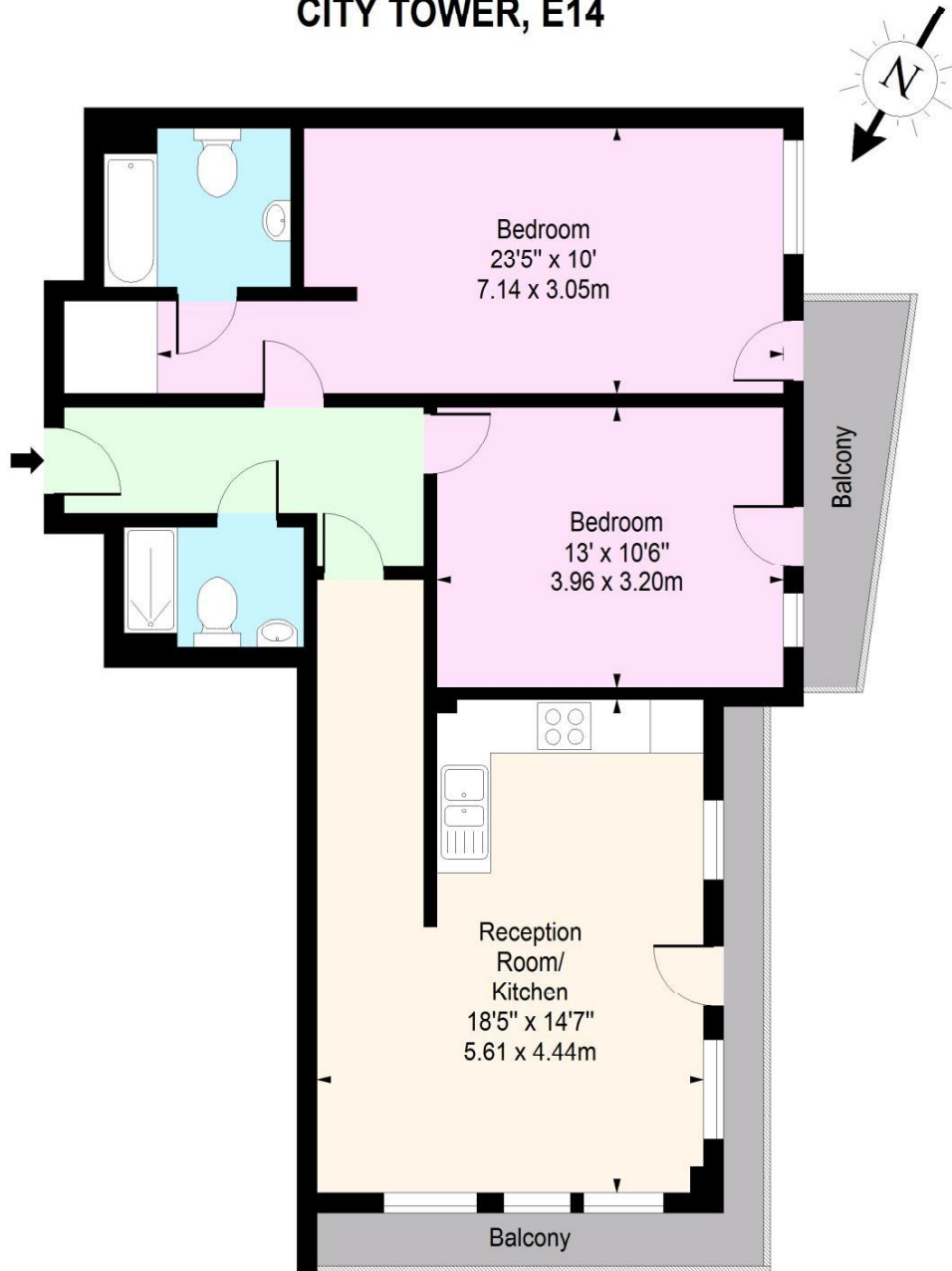


Chestertons Canary Wharf & Greenwich Lettings

Harbour Island
 28 Harbour Exchange Square
 Canary Wharf & Docklands
 London
 E14 9GE
 canarywharflettingsusers@chestertons.co.uk
 02075108310

Additional tenant charges apply (fees apply to non-AST tenancies only)
 Tenancy Agreement Fee: £300
 References per Tenant/Guarantor: £60
 Inventory check (approx. £100 – £250 inc. VAT)
 chestertons.co.uk/property-to-rent/applicable-fees

CITY TOWER, E14



Tenth Floor

Approx. Gross Internal Area 807 Sq Ft - 74.97 Sq M

For Illustrative Purposes Only - Not To Scale

www.lpaplus.com

Chesterton UK Services Limited trading as Chestertons for themselves and for the vendor of this property whose agents they are, give notice that (i) these particulars do not constitute any part of an offer or contract, (ii) all statements contained within these particulars are made without responsibility on the part of Chestertons or the vendor, (iii) whilst made in good faith, none of the statements contained within these particulars are to be relied upon as a statement or representation of fact, (iv) any intending purchasers must satisfy themselves by inspection or otherwise as to the correctness of each of the statements contained within these particulars, (v) the vendor does not make or give either Chestertons or any person in their employment any authority to make or give representation or warranty whatsoever in relation to this property. Wide angle lenses may be used. ©Copyright Chestertons | Chesterton Global Ltd | Registered Office 40 Connaught Street, Hyde Park, London W2 2AB Registered Company Number 05334580.



This paper is
100% recyclable