



**McKeever Close Highbridge Street, Waltham Abbey EN9 1FD**

**welcome to**

## **McKeever Close Highbridge Street, Waltham Abbey**

William H Brown are delighted to bring to the market this stunning three bedroom semi detached family home situated in a lovely location in the heart of Waltham Abbey. An internal viewing is a must!

### **Accommodation Comprises Of: Entrance Hall**

Laminate floor, radiator.

### **Cloakroom**

Double glazed window to side aspect, part tiled walls, tiled floor, wc.

### **Lounge**

14' 11" x 11' 9" ( 4.55m x 3.58m )

Laminate floor, radiator, french doors,

### **Kitchen**

12' 2" x 11' 10" ( 3.71m x 3.61m )

Double glazed window to front aspect, tiled floor, a range of wall and base units with complimenting worktops, radiator, gas hob, integrated oven. integrated fridge freezer, integrated dishwasher, storage cupboard.

### **Bedroom 1**

11' 6" x 11' 1" ( 3.51m x 3.38m )

Double glazed window to front aspect, radiator, storage cupboard.

### **En-Suite**

Shower cubicle, wc, wash hand basin, double glazed window to front aspect, chrome heated radiator, wc.

### **Bedroom 2**

10' 10" x 8' 5" ( 3.30m x 2.57m )

Double glazed window to rear aspect, radiator.

### **Bedroom 3**

7' 10" x 6' 1" ( 2.39m x 1.85m )

Double glazed window to rear aspect, radiator.

### **Bathroom**

Double glazed window to side aspect, chrome

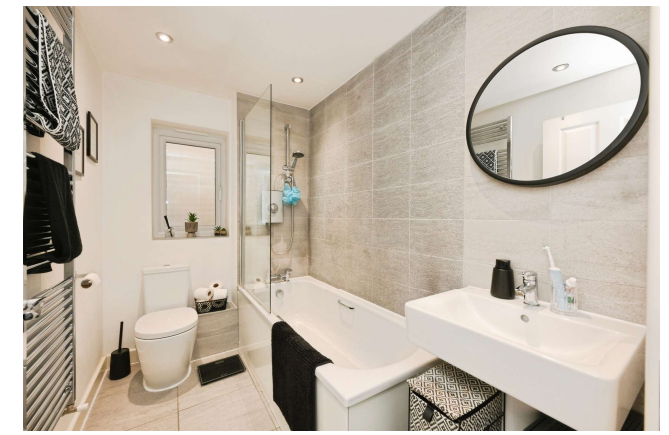
heated radiator, wc, tiled floor, paneled bath, part tiled walls.

### **Exterior Rear Garden**

To the rear of the property is side access, patio area, lawn area, pergola, shed.







***view this property online*** [williamhbrown.co.uk/Property/BRX109561](http://williamhbrown.co.uk/Property/BRX109561)



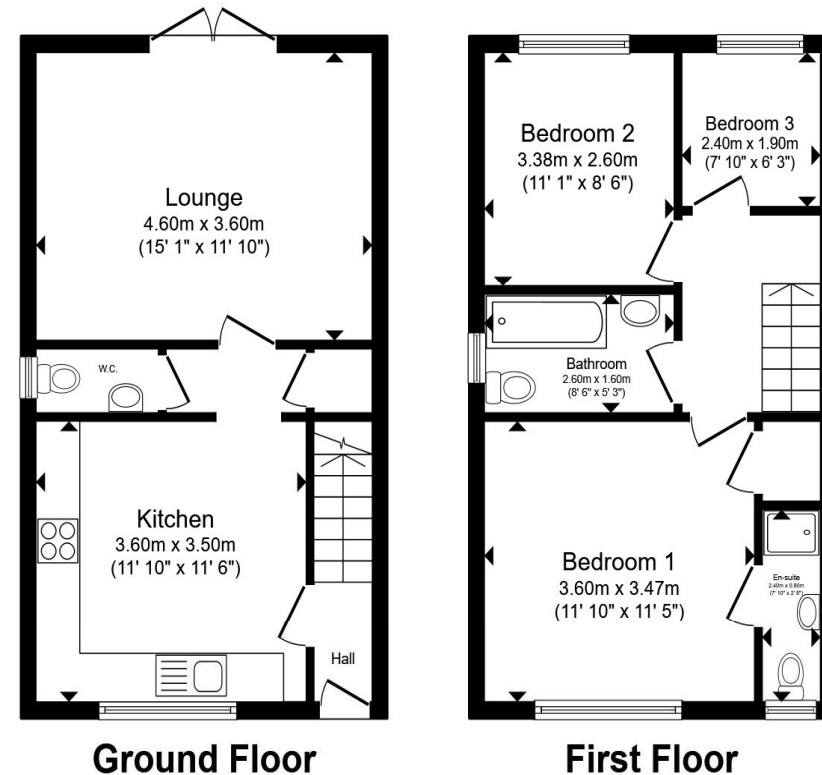
welcome to

**McKeever Close Highbridge Street,  
Waltham Abbey**

- Semi detached
- En-suite, family bathroom and wc
- Modern interior throughout
- Secluded rear garden
- 2 allocated spaces

Tenure: Freehold EPC Rating: B  
Council Tax Band: E

**£479,995**



Total floor area 74.5 m<sup>2</sup> (802 sq.ft.) approx

This floor plan is for illustrative purposes only. It is not drawn to scale. Any measurements, floor areas (including any total floor area), openings and orientation are approximate. No details are guaranteed, they cannot be relied upon for any purpose and they do not form part of any agreement. No liability is taken for any error, omission or misstatement. A party must rely upon its own inspection(s). Powered by [www.propertybox.io](http://www.propertybox.io)

  
william  
h brown

**view this property online** [williamhbrown.co.uk/Property/BRX109561](http://williamhbrown.co.uk/Property/BRX109561)



Property Ref:  
BRX109561 - 0003

1. MONEY LAUNDERING REGULATIONS Intending purchasers will be asked to produce identification documentation at a later stage and we would ask for your co-operation in order that there is no delay in agreeing the sale. 2. These particulars do not constitute part or all of an offer or contract. 3. The measurements indicated are supplied for guidance only and as such must be considered incorrect. Potential buyers are advised to recheck measurements before committing to any expense. 4. We have not tested any apparatus, equipment, fixtures or services and it is in the buyers interest to check the working condition of any appliances. 5. Where an EPC, or a Home Report (Scotland only) is held for this property, it is available for inspection at the branch by appointment. If you require a printed version of a Home Report, you will need to pay a reasonable production charge reflecting printing and other costs. 6. We are not able to offer an opinion either written or verbal on the content of these reports and this must be obtained from your legal representative. 7. Whilst we take care in preparing these reports, a buyer should ensure that his/her legal representative confirms as soon as possible all matters relating to title including the extent and boundaries of the property and other important matters before exchange of contracts.

William H Brown is a trading name of Sequence (UK) Limited which is registered in England and Wales under company number 4268443, Registered Office is Cumbria House, 16-20 Hockliffe Street, Leighton Buzzard, Bedfordshire, LU7 1GN. VAT Registration Number is 500 2481 05.

  
william h brown



**01992 464174**



[Broxbourne@williamhbrown.co.uk](mailto:Broxbourne@williamhbrown.co.uk)



47 High Road, BROXBOURNE, Hertfordshire,  
EN10 7HX



**[williamhbrown.co.uk](http://williamhbrown.co.uk)**





**McKeever Close Highbridge Street, Waltham Abbey EN9 1FD**

**welcome to**

## **McKeever Close Highbridge Street, Waltham Abbey**

William H Brown are delighted to bring to the market this stunning three bedroom semi detached family home situated in a lovely location in the heart of Waltham Abbey. An internal viewing is a must!

### **Accommodation Comprises Of: Entrance Hall**

Laminate floor, radiator.

### **Cloakroom**

Double glazed window to side aspect, part tiled walls, tiled floor, wc.

### **Lounge**

14' 11" x 11' 9" ( 4.55m x 3.58m )

Laminate floor, radiator, french doors,

### **Kitchen**

12' 2" x 11' 10" ( 3.71m x 3.61m )

Double glazed window to front aspect, tiled floor, a range of wall and base units with complimenting worktops, radiator, gas hob, integrated oven. integrated fridge freezer, integrated dishwasher, storage cupboard.

### **Bedroom 1**

11' 6" x 11' 1" ( 3.51m x 3.38m )

Double glazed window to front aspect, radiator, storage cupboard.

### **En-Suite**

Shower cubicle, wc, wash hand basin, double glazed window to front aspect, chrome heated radiator, wc.

### **Bedroom 2**

10' 10" x 8' 5" ( 3.30m x 2.57m )

Double glazed window to rear aspect, radiator.

### **Bedroom 3**

7' 10" x 6' 1" ( 2.39m x 1.85m )

Double glazed window to rear aspect, radiator.

### **Bathroom**

Double glazed window to side aspect, chrome

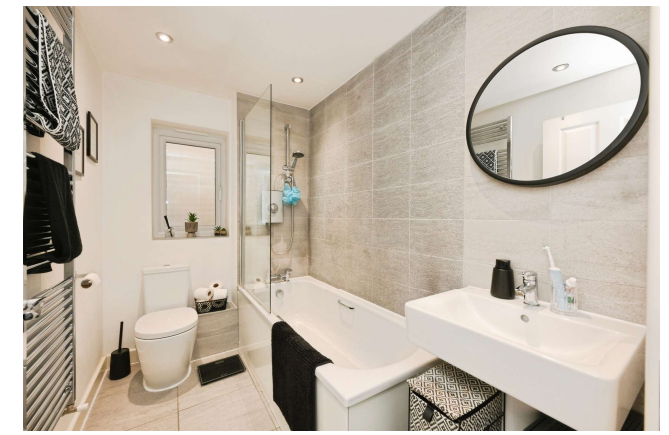
heated radiator, wc, tiled floor, paneled bath, part tiled walls.

### **Exterior Rear Garden**

To the rear of the property is side access, patio area, lawn area, pergola, shed.







***view this property online*** [williamhbrown.co.uk/Property/BRX109561](http://williamhbrown.co.uk/Property/BRX109561)



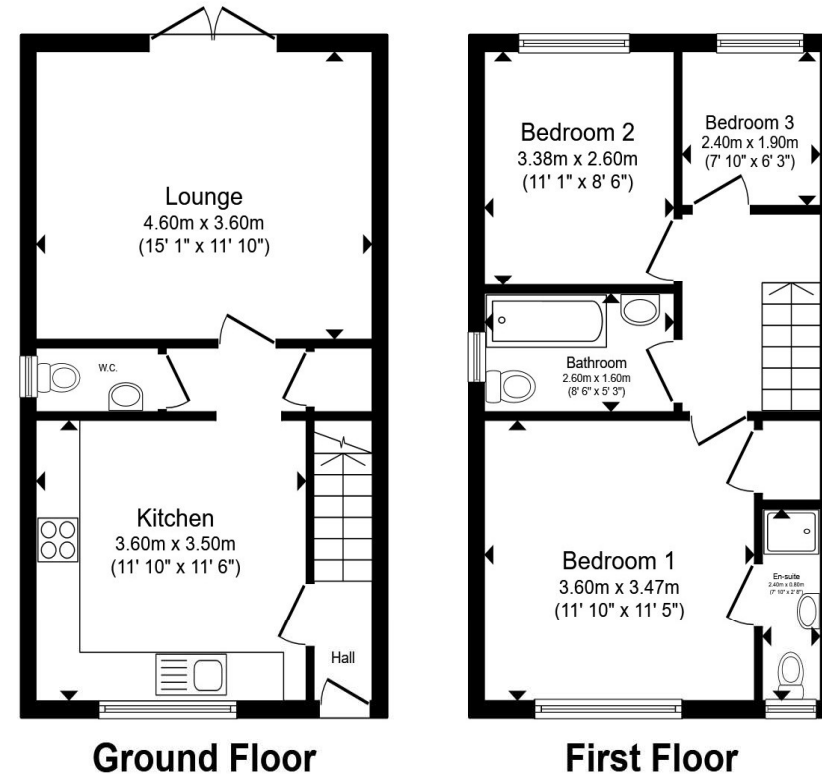
welcome to

**McKeever Close Highbridge Street,  
Waltham Abbey**

- Semi detached
- En-suite, family bathroom and wc
- Modern interior throughout
- Secluded rear garden
- 2 allocated spaces

Tenure: Freehold EPC Rating: B  
Council Tax Band: E

**£479,995**



Total floor area 74.5 m<sup>2</sup> (802 sq.ft.) approx

This floor plan is for illustrative purposes only. It is not drawn to scale. Any measurements, floor areas (including any total floor area), openings and orientation are approximate. No details are guaranteed, they cannot be relied upon for any purpose and they do not form part of any agreement. No liability is taken for any error, omission or misstatement. A party must rely upon its own inspection(s). Powered by [www.propertybox.io](http://www.propertybox.io)

  
william  
h brown

**view this property online** [williamhbrown.co.uk/Property/BRX109561](http://williamhbrown.co.uk/Property/BRX109561)



Property Ref:  
BRX109561 - 0003

1. MONEY LAUNDERING REGULATIONS Intending purchasers will be asked to produce identification documentation at a later stage and we would ask for your co-operation in order that there is no delay in agreeing the sale. 2. These particulars do not constitute part or all of an offer or contract. 3. The measurements indicated are supplied for guidance only and as such must be considered incorrect. Potential buyers are advised to recheck measurements before committing to any expense. 4. We have not tested any apparatus, equipment, fixtures or services and it is in the buyers interest to check the working condition of any appliances. 5. Where an EPC, or a Home Report (Scotland only) is held for this property, it is available for inspection at the branch by appointment. If you require a printed version of a Home Report, you will need to pay a reasonable production charge reflecting printing and other costs. 6. We are not able to offer an opinion either written or verbal on the content of these reports and this must be obtained from your legal representative. 7. Whilst we take care in preparing these reports, a buyer should ensure that his/her legal representative confirms as soon as possible all matters relating to title including the extent and boundaries of the property and other important matters before exchange of contracts.

William H Brown is a trading name of Sequence (UK) Limited which is registered in England and Wales under company number 4268443, Registered Office is Cumbria House, 16-20 Hockliffe Street, Leighton Buzzard, Bedfordshire, LU7 1GN. VAT Registration Number is 500 2481 05.

  
william h brown



**01992 464174**



[Broxbourne@williamhbrown.co.uk](mailto:Broxbourne@williamhbrown.co.uk)



47 High Road, BROXBOURNE, Hertfordshire,  
EN10 7HX



**[williamhbrown.co.uk](http://williamhbrown.co.uk)**





**McKeever Close Highbridge Street, Waltham Abbey EN9 1FD**

**welcome to**

## **McKeever Close Highbridge Street, Waltham Abbey**

William H Brown are delighted to bring to the market this stunning three bedroom semi detached family home situated in a lovely location in the heart of Waltham Abbey. An internal viewing is a must!

### **Accommodation Comprises Of: Entrance Hall**

Laminate floor, radiator.

### **Cloakroom**

Double glazed window to side aspect, part tiled walls, tiled floor, wc.

### **Lounge**

14' 11" x 11' 9" ( 4.55m x 3.58m )

Laminate floor, radiator, french doors,

### **Kitchen**

12' 2" x 11' 10" ( 3.71m x 3.61m )

Double glazed window to front aspect, tiled floor, a range of wall and base units with complimenting worktops, radiator, gas hob, integrated oven. integrated fridge freezer, integrated dishwasher, storage cupboard.

### **Bedroom 1**

11' 6" x 11' 1" ( 3.51m x 3.38m )

Double glazed window to front aspect, radiator, storage cupboard.

### **En-Suite**

Shower cubicle, wc, wash hand basin, double glazed window to front aspect, chrome heated radiator, wc.

### **Bedroom 2**

10' 10" x 8' 5" ( 3.30m x 2.57m )

Double glazed window to rear aspect, radiator.

### **Bedroom 3**

7' 10" x 6' 1" ( 2.39m x 1.85m )

Double glazed window to rear aspect, radiator.

### **Bathroom**

Double glazed window to side aspect, chrome

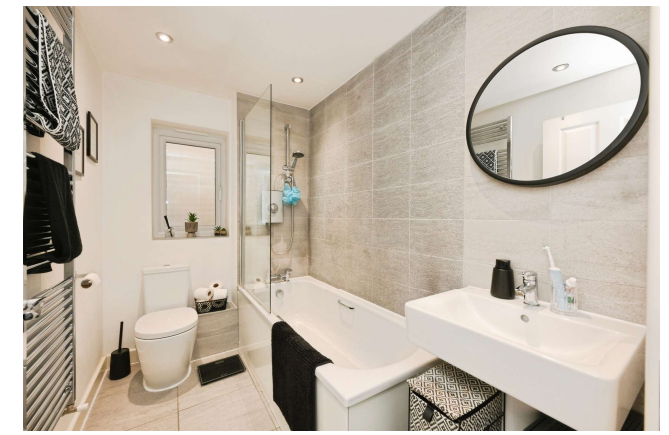
heated radiator, wc, tiled floor, paneled bath, part tiled walls.

### **Exterior Rear Garden**

To the rear of the property is side access, patio area, lawn area, pergola, shed.







***view this property online*** [williamhbrown.co.uk/Property/BRX109561](http://williamhbrown.co.uk/Property/BRX109561)



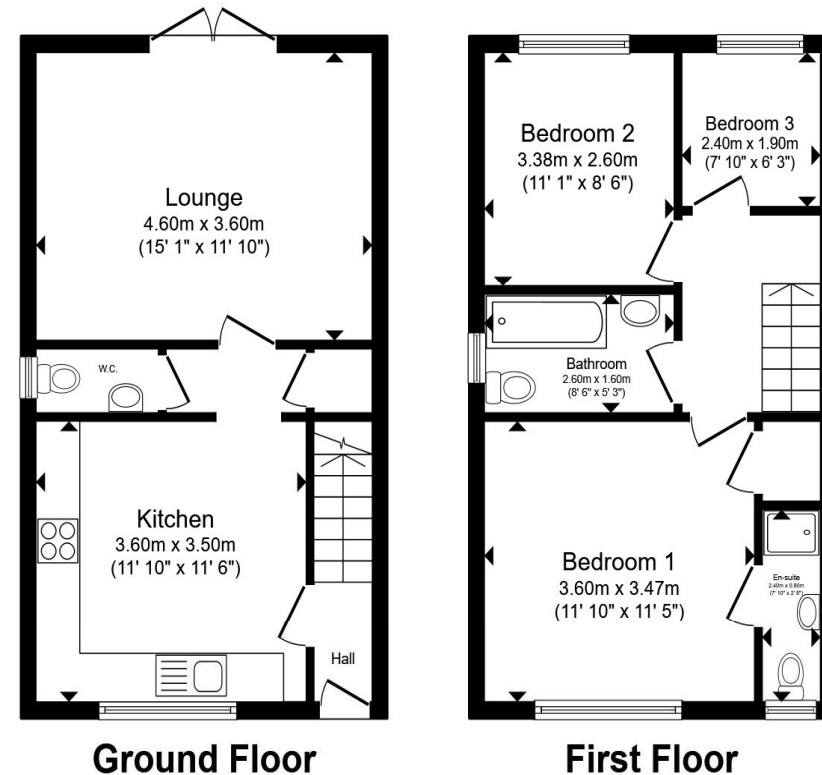
welcome to

**McKeever Close Highbridge Street,  
Waltham Abbey**

- Semi detached
- En-suite, family bathroom and wc
- Modern interior throughout
- Secluded rear garden
- 2 allocated spaces

Tenure: Freehold EPC Rating: B  
Council Tax Band: E

**£479,995**



Total floor area 74.5 m<sup>2</sup> (802 sq.ft.) approx

This floor plan is for illustrative purposes only. It is not drawn to scale. Any measurements, floor areas (including any total floor area), openings and orientation are approximate. No details are guaranteed, they cannot be relied upon for any purpose and they do not form part of any agreement. No liability is taken for any error, omission or misstatement. A party must rely upon its own inspection(s). Powered by [www.propertybox.io](http://www.propertybox.io)

  
william  
h brown

**view this property online** [williamhbrown.co.uk/Property/BRX109561](http://williamhbrown.co.uk/Property/BRX109561)



Property Ref:  
BRX109561 - 0003

1. MONEY LAUNDERING REGULATIONS Intending purchasers will be asked to produce identification documentation at a later stage and we would ask for your co-operation in order that there is no delay in agreeing the sale. 2. These particulars do not constitute part or all of an offer or contract. 3. The measurements indicated are supplied for guidance only and as such must be considered incorrect. Potential buyers are advised to recheck measurements before committing to any expense. 4. We have not tested any apparatus, equipment, fixtures or services and it is in the buyers interest to check the working condition of any appliances. 5. Where an EPC, or a Home Report (Scotland only) is held for this property, it is available for inspection at the branch by appointment. If you require a printed version of a Home Report, you will need to pay a reasonable production charge reflecting printing and other costs. 6. We are not able to offer an opinion either written or verbal on the content of these reports and this must be obtained from your legal representative. 7. Whilst we take care in preparing these reports, a buyer should ensure that his/her legal representative confirms as soon as possible all matters relating to title including the extent and boundaries of the property and other important matters before exchange of contracts.

William H Brown is a trading name of Sequence (UK) Limited which is registered in England and Wales under company number 4268443, Registered Office is Cumbria House, 16-20 Hockliffe Street, Leighton Buzzard, Bedfordshire, LU7 1GN. VAT Registration Number is 500 2481 05.

  
william h brown



**01992 464174**



[Broxbourne@williamhbrown.co.uk](mailto:Broxbourne@williamhbrown.co.uk)



47 High Road, BROXBOURNE, Hertfordshire,  
EN10 7HX



**[williamhbrown.co.uk](http://williamhbrown.co.uk)**





**McKeever Close Highbridge Street, Waltham Abbey EN9 1FD**

**welcome to**

## **McKeever Close Highbridge Street, Waltham Abbey**

William H Brown are delighted to bring to the market this stunning three bedroom semi detached family home situated in a lovely location in the heart of Waltham Abbey. An internal viewing is a must!

### **Accommodation Comprises Of: Entrance Hall**

Laminate floor, radiator.

### **Cloakroom**

Double glazed window to side aspect, part tiled walls, tiled floor, wc.

### **Lounge**

14' 11" x 11' 9" ( 4.55m x 3.58m )

Laminate floor, radiator, french doors,

### **Kitchen**

12' 2" x 11' 10" ( 3.71m x 3.61m )

Double glazed window to front aspect, tiled floor, a range of wall and base units with complimenting worktops, radiator, gas hob, integrated oven. integrated fridge freezer, integrated dishwasher, storage cupboard.

### **Bedroom 1**

11' 6" x 11' 1" ( 3.51m x 3.38m )

Double glazed window to front aspect, radiator, storage cupboard.

### **En-Suite**

Shower cubicle, wc, wash hand basin, double glazed window to front aspect, chrome heated radiator, wc.

### **Bedroom 2**

10' 10" x 8' 5" ( 3.30m x 2.57m )

Double glazed window to rear aspect, radiator.

### **Bedroom 3**

7' 10" x 6' 1" ( 2.39m x 1.85m )

Double glazed window to rear aspect, radiator.

### **Bathroom**

Double glazed window to side aspect, chrome

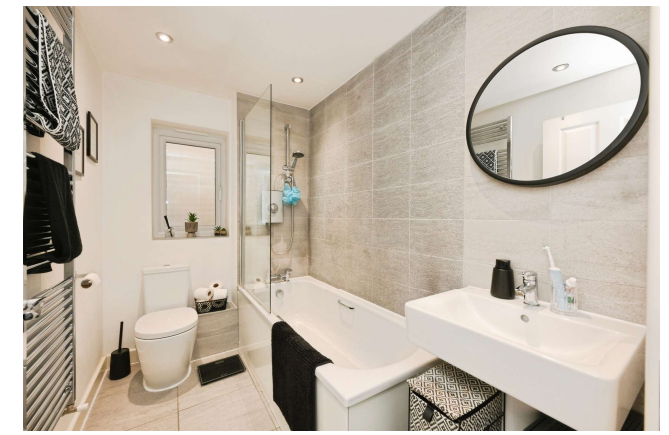
heated radiator, wc, tiled floor, paneled bath, part tiled walls.

### **Exterior Rear Garden**

To the rear of the property is side access, patio area, lawn area, pergola, shed.







***view this property online*** [williamhbrown.co.uk/Property/BRX109561](http://williamhbrown.co.uk/Property/BRX109561)



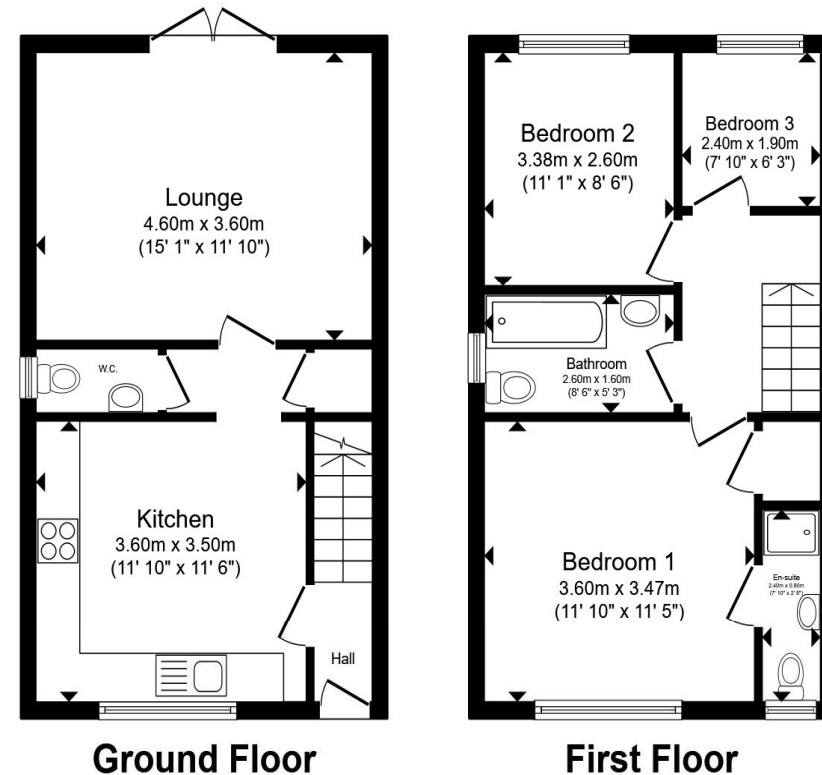
welcome to

**McKeever Close Highbridge Street,  
Waltham Abbey**

- Semi detached
- En-suite, family bathroom and wc
- Modern interior throughout
- Secluded rear garden
- 2 allocated spaces

Tenure: Freehold EPC Rating: B  
Council Tax Band: E

**£479,995**



Total floor area 74.5 m<sup>2</sup> (802 sq.ft.) approx

This floor plan is for illustrative purposes only. It is not drawn to scale. Any measurements, floor areas (including any total floor area), openings and orientation are approximate. No details are guaranteed, they cannot be relied upon for any purpose and they do not form part of any agreement. No liability is taken for any error, omission or misstatement. A party must rely upon its own inspection(s). Powered by [www.propertybox.io](http://www.propertybox.io)

  
william  
h brown

**view this property online** [williamhbrown.co.uk/Property/BRX109561](http://williamhbrown.co.uk/Property/BRX109561)



Property Ref:  
BRX109561 - 0003

1. MONEY LAUNDERING REGULATIONS Intending purchasers will be asked to produce identification documentation at a later stage and we would ask for your co-operation in order that there is no delay in agreeing the sale. 2. These particulars do not constitute part or all of an offer or contract. 3. The measurements indicated are supplied for guidance only and as such must be considered incorrect. Potential buyers are advised to recheck measurements before committing to any expense. 4. We have not tested any apparatus, equipment, fixtures or services and it is in the buyers interest to check the working condition of any appliances. 5. Where an EPC, or a Home Report (Scotland only) is held for this property, it is available for inspection at the branch by appointment. If you require a printed version of a Home Report, you will need to pay a reasonable production charge reflecting printing and other costs. 6. We are not able to offer an opinion either written or verbal on the content of these reports and this must be obtained from your legal representative. 7. Whilst we take care in preparing these reports, a buyer should ensure that his/her legal representative confirms as soon as possible all matters relating to title including the extent and boundaries of the property and other important matters before exchange of contracts.

William H Brown is a trading name of Sequence (UK) Limited which is registered in England and Wales under company number 4268443, Registered Office is Cumbria House, 16-20 Hockliffe Street, Leighton Buzzard, Bedfordshire, LU7 1GN. VAT Registration Number is 500 2481 05.

  
william h brown



**01992 464174**



[Broxbourne@williamhbrown.co.uk](mailto:Broxbourne@williamhbrown.co.uk)



47 High Road, BROXBOURNE, Hertfordshire,  
EN10 7HX



**[williamhbrown.co.uk](http://williamhbrown.co.uk)**





**McKeever Close Highbridge Street, Waltham Abbey EN9 1FD**

**welcome to**

## **McKeever Close Highbridge Street, Waltham Abbey**

William H Brown are delighted to bring to the market this stunning three bedroom semi detached family home situated in a lovely location in the heart of Waltham Abbey. An internal viewing is a must!

### **Accommodation Comprises Of: Entrance Hall**

Laminate floor, radiator.

### **Cloakroom**

Double glazed window to side aspect, part tiled walls, tiled floor, wc.

### **Lounge**

14' 11" x 11' 9" ( 4.55m x 3.58m )

Laminate floor, radiator, french doors,

### **Kitchen**

12' 2" x 11' 10" ( 3.71m x 3.61m )

Double glazed window to front aspect, tiled floor, a range of wall and base units with complimenting worktops, radiator, gas hob, integrated oven. integrated fridge freezer, integrated dishwasher, storage cupboard.

### **Bedroom 1**

11' 6" x 11' 1" ( 3.51m x 3.38m )

Double glazed window to front aspect, radiator, storage cupboard.

### **En-Suite**

Shower cubicle, wc, wash hand basin, double glazed window to front aspect, chrome heated radiator, wc.

### **Bedroom 2**

10' 10" x 8' 5" ( 3.30m x 2.57m )

Double glazed window to rear aspect, radiator.

### **Bedroom 3**

7' 10" x 6' 1" ( 2.39m x 1.85m )

Double glazed window to rear aspect, radiator.

### **Bathroom**

Double glazed window to side aspect, chrome

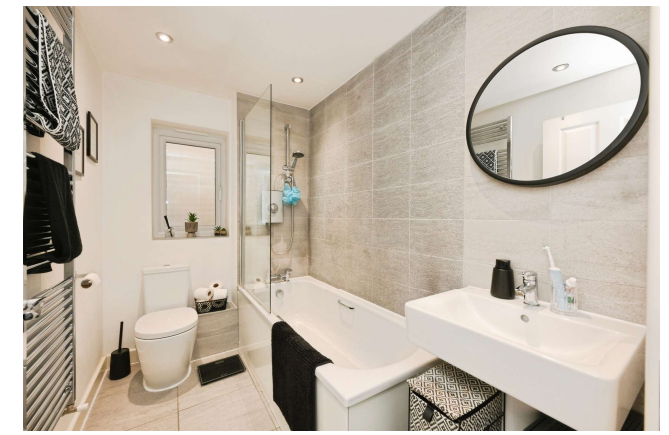
heated radiator, wc, tiled floor, paneled bath, part tiled walls.

### **Exterior Rear Garden**

To the rear of the property is side access, patio area, lawn area, pergola, shed.







***view this property online*** [williamhbrown.co.uk/Property/BRX109561](http://williamhbrown.co.uk/Property/BRX109561)



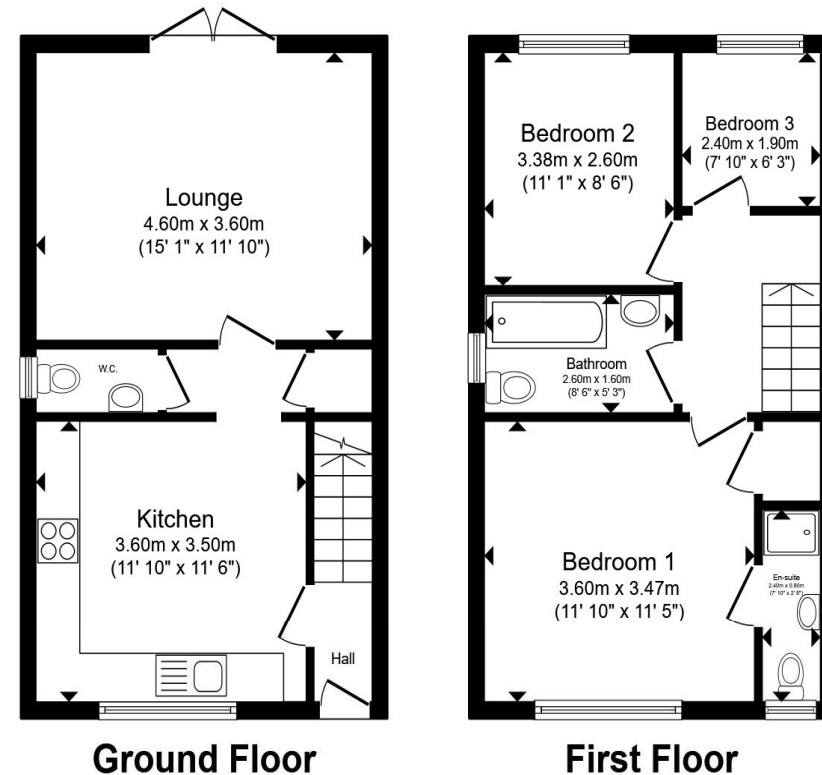
welcome to

**McKeever Close Highbridge Street,  
Waltham Abbey**

- Semi detached
- En-suite, family bathroom and wc
- Modern interior throughout
- Secluded rear garden
- 2 allocated spaces

Tenure: Freehold EPC Rating: B  
Council Tax Band: E

**£479,995**



Total floor area 74.5 m<sup>2</sup> (802 sq.ft.) approx

This floor plan is for illustrative purposes only. It is not drawn to scale. Any measurements, floor areas (including any total floor area), openings and orientation are approximate. No details are guaranteed, they cannot be relied upon for any purpose and they do not form part of any agreement. No liability is taken for any error, omission or misstatement. A party must rely upon its own inspection(s). Powered by [www.propertybox.io](http://www.propertybox.io)

  
william  
h brown

**view this property online** [williamhbrown.co.uk/Property/BRX109561](http://williamhbrown.co.uk/Property/BRX109561)



Property Ref:  
BRX109561 - 0003

1. MONEY LAUNDERING REGULATIONS Intending purchasers will be asked to produce identification documentation at a later stage and we would ask for your co-operation in order that there is no delay in agreeing the sale. 2. These particulars do not constitute part or all of an offer or contract. 3. The measurements indicated are supplied for guidance only and as such must be considered incorrect. Potential buyers are advised to recheck measurements before committing to any expense. 4. We have not tested any apparatus, equipment, fixtures or services and it is in the buyers interest to check the working condition of any appliances. 5. Where an EPC, or a Home Report (Scotland only) is held for this property, it is available for inspection at the branch by appointment. If you require a printed version of a Home Report, you will need to pay a reasonable production charge reflecting printing and other costs. 6. We are not able to offer an opinion either written or verbal on the content of these reports and this must be obtained from your legal representative. 7. Whilst we take care in preparing these reports, a buyer should ensure that his/her legal representative confirms as soon as possible all matters relating to title including the extent and boundaries of the property and other important matters before exchange of contracts.

William H Brown is a trading name of Sequence (UK) Limited which is registered in England and Wales under company number 4268443, Registered Office is Cumbria House, 16-20 Hockliffe Street, Leighton Buzzard, Bedfordshire, LU7 1GN. VAT Registration Number is 500 2481 05.

  
william h brown



**01992 464174**



[Broxbourne@williamhbrown.co.uk](mailto:Broxbourne@williamhbrown.co.uk)



47 High Road, BROXBOURNE, Hertfordshire,  
EN10 7HX



**[williamhbrown.co.uk](http://williamhbrown.co.uk)**