



CHATSWORTH COURT, W8

£750,000

Two Bedroom
Separate Kitchen
Raised Ground Floor
Communal Garden
Share of Freehold
Porter

@marshandparsons
marshandparsons.co.uk

MARSH &
PARSONS



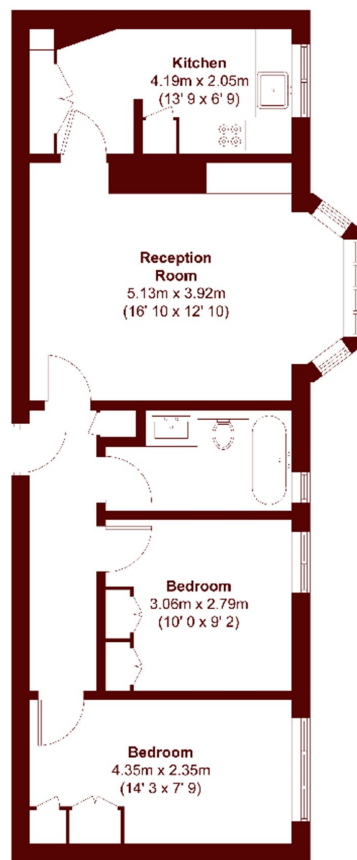
ABOUT THE PROPERTY

This well-presented two bedroom apartment features wooden flooring throughout, a modern separate kitchen with gloss-finish units and integrated appliances, and a generous reception room with space for dining. Both bedrooms are well-proportioned doubles, and the bathroom is finished to a modern standard.

Chatsworth Court is moments from the shops, bars and restaurants of Kensington High Street (District line & Circle line) and ideally located for the transport links at Earls Court (District line & Piccadilly line).



STEP INSIDE CHATSWORTH COURT



Ground Floor

APPROX. GROSS INTERNAL FLOOR AREA
639 SQFT / 59.4 SQM

Kensington
020 7368 4450

Energy Rating: C We aim to make our particulars both accurate and reliable. However, they are not guaranteed; nor do they form part of an offer or contract. If you require clarification on any points then please contact us, especially if you're traveling some distance to view. Please note that appliances and heating systems have not been tested and therefore no warranties can be given as to their good working order

**MARSH &
PARSONS**