



*jordan fishwick*

ALTRINCHAM  
Townfield Road





**Townfield Road,  
Altrincham, WA14 4DT**

**Offers In The Region Of  
£250,000**



## The Property

NO ONWARD CHAIN. Jordan Fishwick are pleased to present for sale this impressive apartment which occupies the second floor of the development, and features picturesque views out towards the communal gardens and fields from the south facing balcony. Walking distance into the Town Centre and Train/Metrolink station.

Accommodation briefly comprises; Entrance hall with two handy storage/cloaks cupboards, welcoming hallway, well-appointed fitted kitchen, and a fabulous dual-aspect living/dining room with door opening to the private balcony. There are 2 well-presented double bedrooms, and a superb four piece bathroom.

Externally there is residents parking, and the development sits within well established and beautifully maintained communal gardens.

Garages are available to rent from the management company, subject to availability.

## Directions

**WA14 4DT**





- No Onward Chain
- Leasehold - 952 years remaining
- £25 p.a. Ground Rent
- £2,400 p.a. Service Charge
- Immaculately presented
- Second Floor Apartment
- South Facing Balcony Overlooking Communal Grounds and Fields
- Private Parking
- Garaging Available to Rent Subject to Availability
- Walking Distance to Altrincham Town Centre

Postcode - WA14 4DT

EPC Rating -

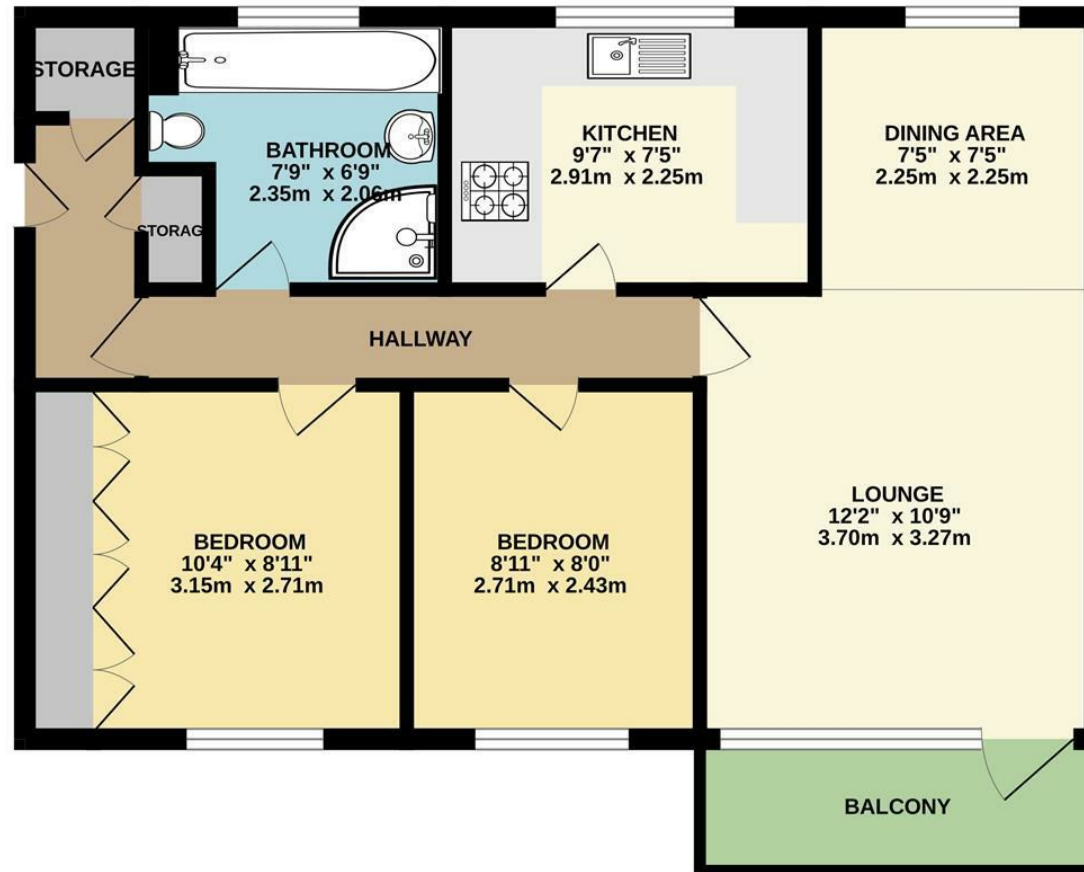
Floor Area - 608.00 sq ft

Local Authority - Trafford

Council Tax - C



## SECOND FLOOR 608 sq.ft. (56.5 sq.m.) approx.



TOTAL FLOOR AREA : 608 sq.ft. (56.5 sq.m.) approx.

Whilst every attempt has been made to ensure the accuracy of the floorplan contained here, measurements of doors, windows, rooms and any other items are approximate and no responsibility is taken for any error, omission or mis-statement. This plan is for illustrative purposes only and should be used as such by any prospective purchaser. The services, systems and appliances shown have not been tested and no guarantee as to their operability or efficiency can be given.  
Made with Metropix ©2025



These particulars are believed to be accurate but they are not guaranteed and do not form a contract. Neither Jordan Fishwick nor the vendor or lessor accept any responsibility in respect of these particulars, which are not intended to be statements or representations of fact and any intending purchaser or lessee must satisfy himself by inspection or otherwise as to the correctness of each of the statements contained in these particulars. Any floorplans on this brochure are for illustrative purposes only and are not necessarily to scale.

Offices at: Chorlton, Didsbury, Disley, Hale, Glossop, Macclesfield, Manchester Deansgate, Manchester Whitworth Street, New Mills, Sale, Wilmslow and Withington

0161 929 9797

hale@jordanfishwick.co.uk  
www.jordanfishwick.co.uk