



Beardall Street
Hucknall Nottingham

burchell
edwards

Beardall Street Hucknall Nottingham NG15 7RP

for sale offers over
£165,000



Property Description

This spacious and well-presented home offers modern living across three floors and is ready to move straight into.

On the ground floor, you're welcomed by a bright and comfortable lounge leading through to a separate dining room, which flows seamlessly into a fully fitted modern kitchen-perfect for entertaining or family life.

The first floor features two generously sized bedrooms along with a contemporary family bathroom.

Heading up to the second floor, the loft room provides a versatile additional space complete with its own ensuite shower room, ideal as a master bedroom, guest suite, or home office.

Outside, the property benefits from a low-maintenance rear yard and on-street parking.

This lovely home is perfect for first-time buyers, growing families, or investors alike.

Lounge

Accessed via composite door into the lounge with a radiator and cupboard housing the meter.

Lobby Area

Having access to the dining room and storage cupboard.

Dining Room

Having french doors to the rear, a door to the strairs, a radiator, and being open plan to the kitchen

Kitchen

Having windows to the side and rear elevation, wall and base units with work surfaces over, tiled flooring, sink and drainer, a radiator, electric oven, induction hob with extractor, space and plumbing for washing machine and tumble dryer.

First Floor

Bedroom Two

Having window to the front elevation, a radiator and storage cupboard.

Bedroom Three

Having window to the rear elevation and a radiator.

Bathroom

Having bath with mains fed shower over, vanity wash hand basin, window to the rear elevation, low level W.C, chrome heated towel rail and tiled flooring.

Second Floor

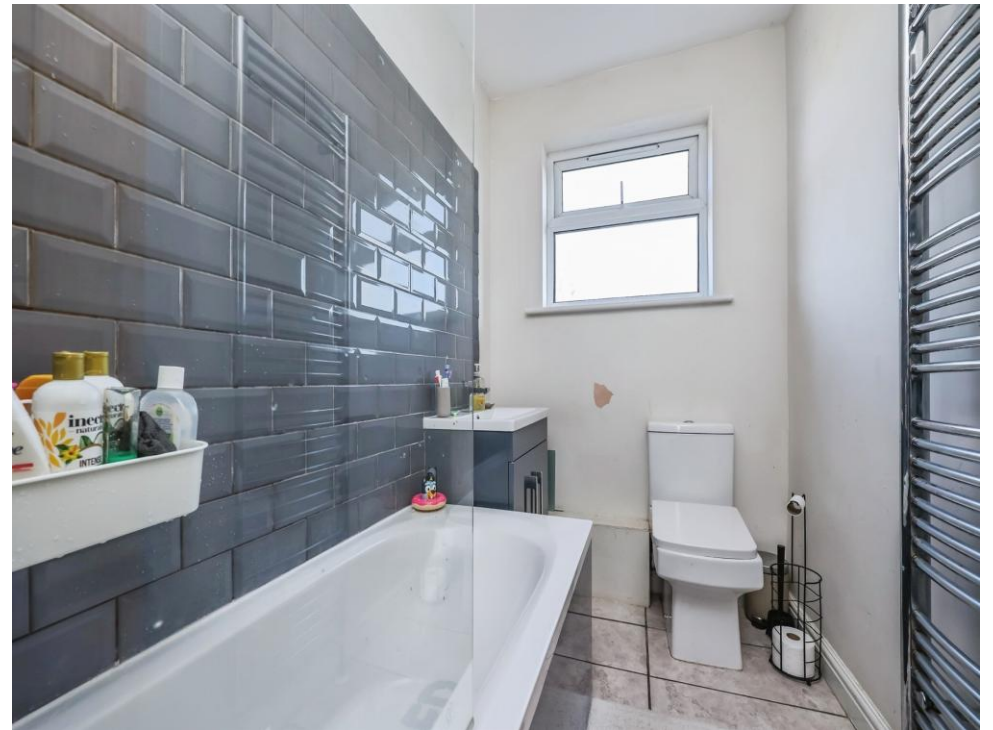
Loft Room

Having velux window to the front elevation, a radiator and eaves storage.

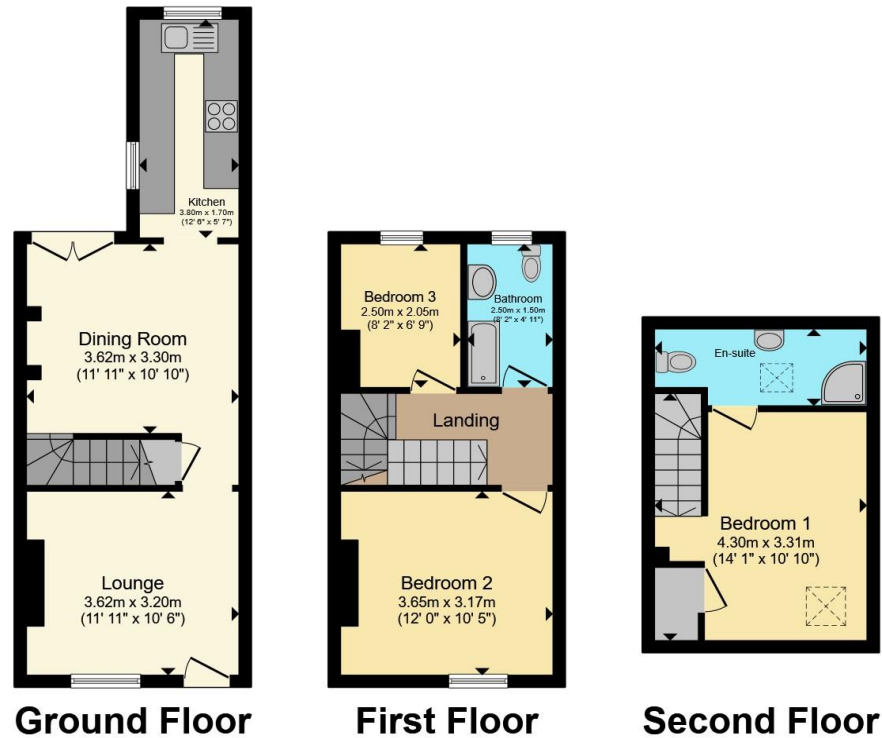
En Suite

Having velux style window to the rear elevation, W.C, wash hand basin with mixer tap, tiled flooring, chrome heated towel rail, mains fed corner shower cubicle, spot lights and extractor fan.









Total floor area 80.5 m² (867 sq.ft.) approx

This floor plan is for illustrative purposes only. It is not drawn to scale. Any measurements, floor areas (including any total floor area), openings and orientation are approximate. No details are guaranteed, they cannot be relied upon for any purpose and they do not form part of any agreement. No liability is taken for any error, omission or misstatement. A party must rely upon its own inspection(s). Powered by www.propertybox.io



To view this property please contact Burchell Edwards on

T 0115 968 0528
E hucknall@burchelledwards.co.uk

64 High Street Hucknall
 NOTTINGHAM NG15 7AX

EPC Rating: E Council Tax
 Band: A

Tenure: Freehold

view this property online burchelledwards.co.uk/Property/HUK104945



1. MONEY LAUNDERING REGULATIONS Intending purchasers will be asked to produce identification documentation at a later stage and we would ask for your co-operation in order that there will be no delay in agreeing the sale. 2. These particulars do not constitute part or all of an offer or contract. 3. The measurements indicated are supplied for guidance only and as such must be considered incorrect. Potential buyers are advised to recheck measurements before committing to any expense. 4. We have not tested any apparatus, equipment, fixtures, fittings or services and it is in the buyers interest to check the working condition of any appliances.

Burchell Edwards is a trading name of Connells Residential which is registered in England and Wales under company number 1489613, Registered Office is Cumbria House, 16-20 Hockliffe Street, Leighton Buzzard, Bedfordshire, LU7 1GN. VAT Registration Number is 500 2481 05.

See all our properties at www.burchelledwards.co.uk | www.rightmove.co.uk | www.zoopla.co.uk

Property Ref: HUK104945 - 0007