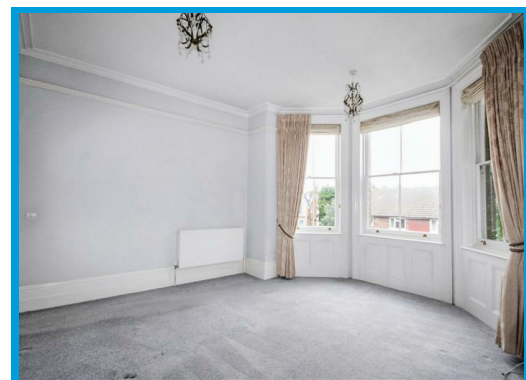
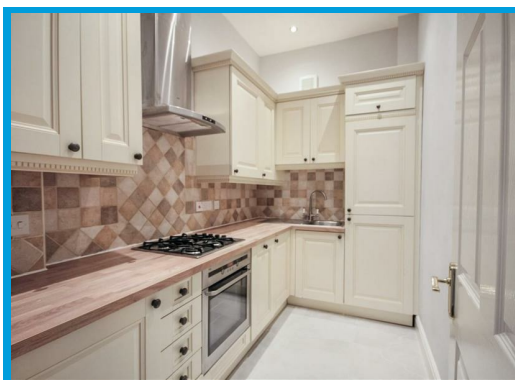
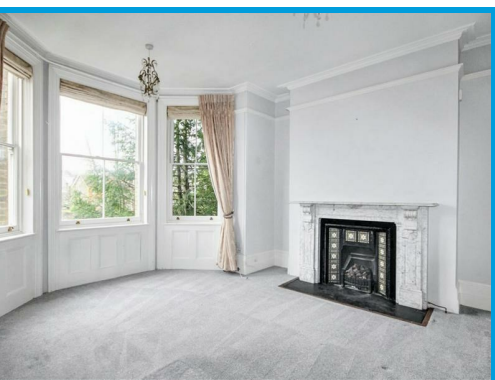




Hunter Road, Guildford, Surrey GU1 3LH

Guide Price £375,000

****GARDEN FLAT****- A two bedroom garden flat located in the heart of Guildford town centre offering spacious and well presented accommodation throughout with a modern kitchen and bathrooms. The property also benefits from allocated parking and a garage.



Description

NO ONWARD CHAIN Located just moments' walk from Guildford High Street, this beautifully presented two-bedroom apartment offers spacious and well-appointed accommodation throughout, along with the rare benefit of its own private garden.

Accessed via a secure entry phone system, the property comprises an entrance hall leading to a large lounge featuring a bay window and attractive fireplace, a modern kitchen with integrated appliances, and a family bathroom with shower. The accommodation further includes a generous master bedroom with built-in wardrobes and en-suite shower room, as well as a second bedroom.

Additional benefits include a private garden, ample built-in storage, high ceilings, and charming character features throughout. The property also offers allocated parking and a garage, making it an ideal purchase for a range of buyers seeking convenience and style in a prime location.

