

## John Islip Street, SW1P

£1,400 Per week

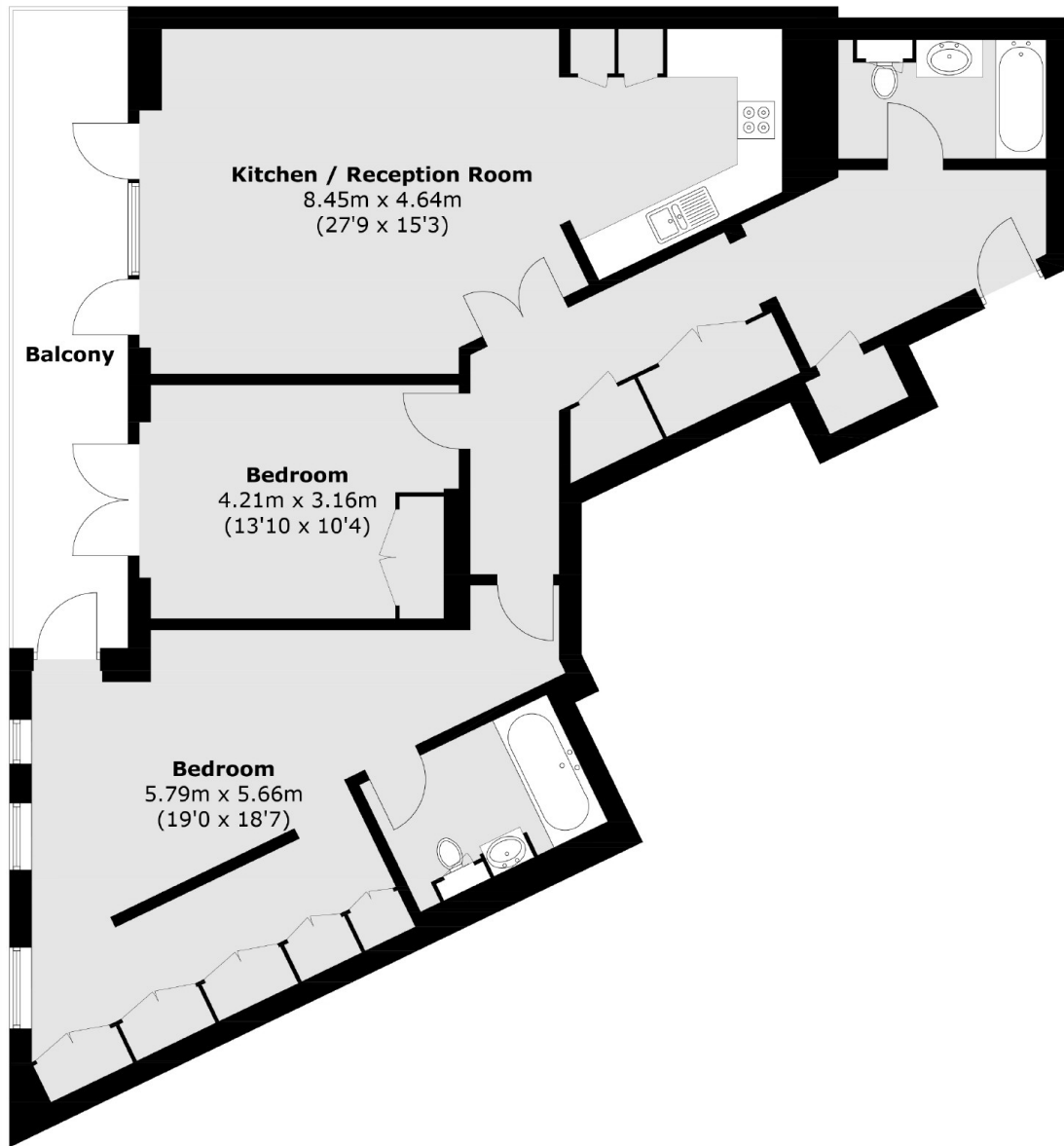
A fantastic two double bedroom apartment with two bathroom finished to a high specification with a private balcony, set over one floor in the exceptional Abell house, located close to St James's Park and all the amenities of Westminster and Victoria.

Abell House enjoys easy access to a number of transport stations, with Victoria, St James Park & Pimlico underground stations being close by (Circle, District & Victoria Lines).

### Features

- Two Bedroom Apartment
- Two Bathrooms
- High Specification
- Leisure Facilities
- Excellent Location
- 24/7 Concierge
- Private Balcony

# John Islip Street, London, SW1P



## Third Floor

Total area (approx.): 109.9 sq. m (1,182.9 sq. ft)  
Balcony area (approx.): 13.3 sq. m (143.2 sq. ft)