



Northumberland
Properties

3 Albion Close, Warkworth
£450,000





3 Albion Close

Warkworth, Morpeth

Council Tax band: D

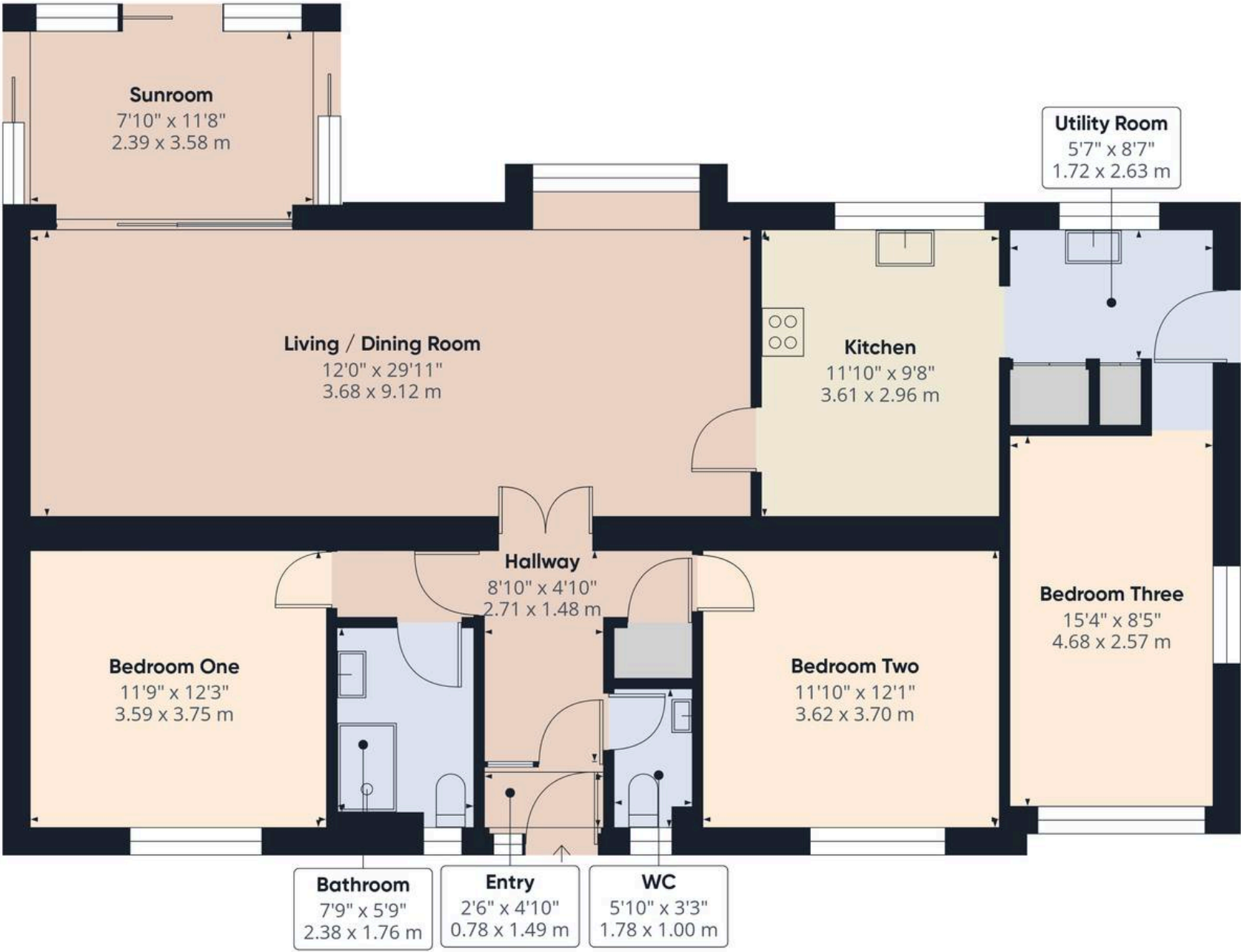
Tenure: Freehold

EPC Energy Efficiency Rating: D

EPC Environmental Impact Rating: D

- Detached three-bedroom bungalow offering true single-storey living within a highly sought-after Warkworth setting
- Positioned on a generous, mature plot providing a strong sense of privacy
- Spacious lounge and dining area opening into a light-filled sunroom with garden outlook
- Three well-proportioned double bedrooms, including a principal with fitted wardrobes
- Contemporary family bathroom with large walk-in shower and additional separate WC
- Ample driveway parking for multiple vehicles, set back within the plot
- Established wraparound gardens with mature planting
- Walking distance to the coastline, with access to sandy beaches and coastal walks





Approximate total area⁽¹⁾
1223 ft²
113.7 m²

(1) Excluding balconies and terraces

Calculations reference the RICS IPMS 3C standard. Measurements are approximate and not to scale. This floor plan is intended for illustration only.









What truly elevates this home is its setting. Warkworth is widely regarded as one of Northumberland's most sought-after villages, anchored by the iconic Warkworth Castle and set along the banks of the River Coquet. The village offers a carefully curated mix of independent boutiques, cafés and traditional pubs, all contributing to a lifestyle that feels both established and quietly vibrant. Beyond the village, the coastline is quite literally on your doorstep. Expansive sandy beaches, coastal walks and far-reaching sea views sit just a short distance away, while nearby Alnmouth provides mainline rail connections for access further afield, making this an ideal location for both full-time living and those seeking a refined coastal retreat.

Utilities

Heating: Gas Central Heating

Electricity: National Grid

Water: Direct Main Water

Sewerage: Standard UK Domestic



Northumberland Properties

12 Market Street, Alnwick - NE66 1TL

01665660910 • info@northumberlandproperties.co.uk • <http://northumberlandproperties.co.uk>



Northumberland
Properties