



jordan fishwick

Lodge Farm Fanshawe Lane, SK11 9PL
Guide Price £2,195,000



Fanshawe Lane Henbury SK11 9PL

Guide Price £2,195,000




A beautiful and totally private farm complex set within approximately 20 acres of pasture land, woodland and lake, just off Fanshawe Lane near Redesmere Lake in Henbury, Cheshire. The complex comprises a spacious three bedroom, four reception detached farmhouse, offering many characterful features such as latch & brace doors, inglenook fireplace with wood burning stove, AGA, solid oak staircase, and timber framed garden room with stunning views to the rear over the lake. There's a detached one bedroom cottage, and a superb range of outbuildings. The current owners use the property for equestrian purposes, as such one of the barns (61ft x 29ft) houses 8 monarch stalls a tack room and wc, another barn (49ft x 30ft) is currently being used for storage, and there's a triple garage, steel portal 4 vehicle car port, 98ft x 71ft Agricultural building, and a ménage. The approach, gardens and grounds are a delight, this truly is the rural idyll, yet is only a 10 minute drive from Alderley, Congleton and Macclesfield, and a 20 minute drive from Manchester International Airport.





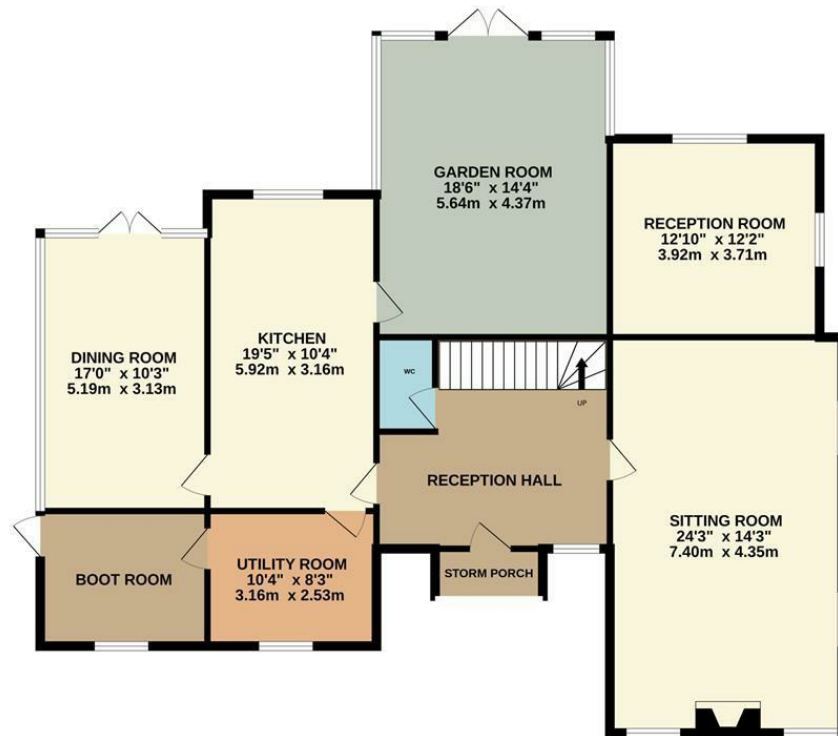
- Characterful Period Farm House
- Separate Detached Cottage
- Approximately 20 Acres
- Equestrian Facilities
- Outbuildings, Garages and Barns
- Secluded and Private



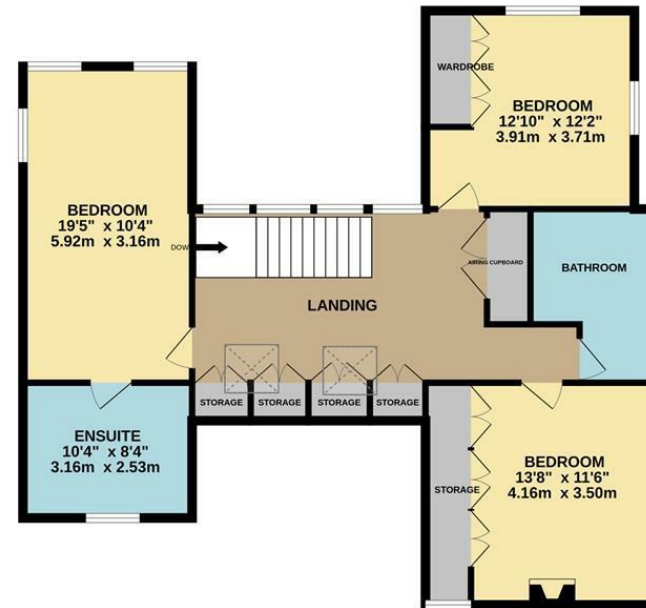
Energy Efficiency Rating		
	Current	Potential
Very energy efficient - lower running costs		
(92 plus) A		
(81-91) B		
(69-80) C		72
(55-68) D		
(39-54) E	47	
(21-38) F		
(1-20) G		
Not energy efficient - higher running costs		
England & Wales	EU Directive 2002/91/EC 	



GROUND FLOOR
1514 sq.ft. (140.6 sq.m.) approx.



1ST FLOOR
972 sq.ft. (90.3 sq.m.) approx.



TOTAL FLOOR AREA : 2486 sq.ft. (230.9 sq.m.) approx.
Measurements are approximate. Not to scale. Illustrative purposes only
Made with Metropix ©2026



These particulars are believed to be accurate but they are not guaranteed and do not form a contract. Neither Jordan Fishwick nor the vendor or lessor accept any responsibility in respect of these particulars, which are not intended to be statements or representations of fact and any intending purchaser or lessee must satisfy himself by inspection or otherwise as to the correctness of each of the statements contained in these particulars. Any floorplans on this brochure are for illustrative purposes only and are not necessarily to scale.

Offices at: Chorlton, Didsbury, Disley, Hale, Glossop, Macclesfield, Manchester Deansgate, Manchester Whitworth Street, New Mills, Sale, Wilmslow and Withington

36-38 Alderley Road, Wilmslow SK91JX
01625 532000

wilmslow@jordanfishwick.co.uk
www.jordanfishwick.co.uk