



## Schooner Road, E16

£3,450 Per week

An immaculately presented three bedroom apartment with an allocated parking space, set on a high-floor, boasting a large living space, wrap-around terrace and direct river views.

Pinnacle House is situated within the purpose built suburb of Royal Wharf. Residents enjoy a 24/7 concierge service, roaming security, plus access to the exclusive on-site Health Club (gymnasium, pools & spa facilities).

### Features

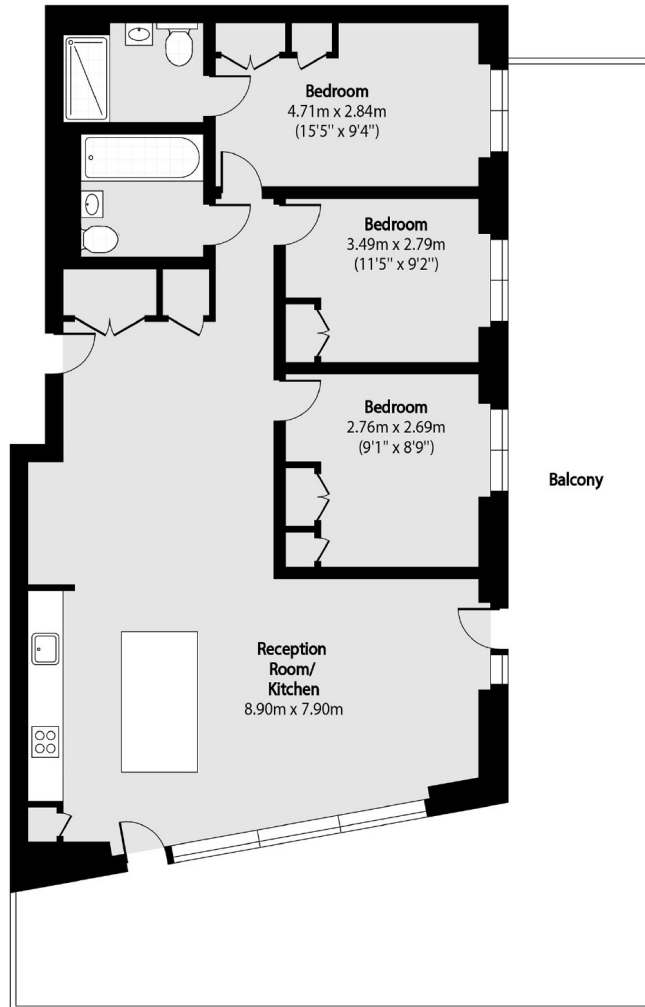
- Over 100sqm
- Immaculate Condition
- Three Double Bedrooms
- Wrap-Around Terrace
- Allocated Parking
- On-Site Resident Facilities



**Schooner Road, E16**



# Schooner Road, London, E16



Total area (approx): 103.06 sq m (1109 sq. ft)

Balcony total area (approx): 60.73 sq m (654 sq. ft)