



# Barnes High Street

Barnes, SW13

£2,000 per month  
(£461.54 per week)

A well-proportioned upper floor flat located in the heart of Barnes Village. The property boasts a prime position on the High Street, a secure entry system and two lifts.

Accommodation comprises a spacious reception room with far-reaching views, a well-appointed fitted kitchen, a generous double bedroom with built-in wardrobes and a bathroom.

The property is offered furnished or part-furnished.

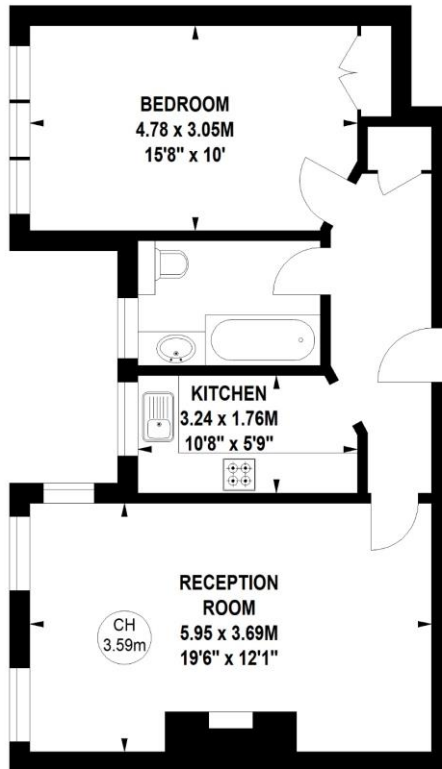
**CHESTERTONS**

# Seaforth Lodge, Barnes High Street, London, SW13

Approximate gross internal area

Key :  
CH - Ceiling Height

56.85 sq m / 612 sq ft



## Fifth Floor

Not to scale, for guidance only and must not be relied upon as a statement of fact.  
All measurements and areas are approximate only

**Minimum Term:** 12 months  
**Deposit Required:** five weeks (£2,307.70)  
**Local Authority:** London Borough of Richmond upon Thames  
**Council Tax Band:** D  
**EPC Rating:** E  
**Furnished / Part-Furnished**

Energy Efficiency Rating		
	Current	Potential
Very energy efficient - lower running costs		
(92+) A		
(81-91) B		
(69-80) C		
(55-68) D		
(39-54) E		
(21-38) F		
(1-20) G		
Not energy efficient - higher running costs		
England, Scotland & Wales		
EU Directive 2002/91/EC		

## Chestertons Barnes Lettings

68-69 Barnes High Street  
Barnes  
London  
SW13 9LD  
barnes@chestertons.co.uk  
020 8748 7733  
chestertons.co.uk

Additional tenant charges apply (fees apply to non-AST tenancies only)  
Tenancy Agreement Fee: £300  
References per Tenant/Guarantor: £60  
Inventory Check: Approx. £100-£250 (inc. VAT)  
chestertons.co.uk/property-to-rent/applicable-fees

Chesterton Global Ltd trading as Chestertons for themselves and for the vendor of this property whose agents they are, give notice that (i) these particulars do not constitute any part of an offer or contract, (ii) all statements contained within these particulars are made without responsibility on the part of Chestertons or the vendor, (iii) whilst made in good faith, none of the statements contained within these particulars are to be relied upon as a statement or representation of fact, (iv) any intending purchasers must satisfy themselves by inspection or otherwise as to the correctness of each of the statements contained within these particulars, (v) the vendor does not make or give either Chestertons or any person in their employment any authority to make or give representation or warranty whatsoever in relation to this property. Wide angle lenses may be used. ©Copyright Chestertons | Chesterton Global Ltd | Registered Office 40 Connaught Street, Hyde Park, London W2 2AB Registered Company Number 05334580.



This paper is  
100% recyclable