



Strathblaine Road, SW11
£700,000

Dexters



Strathblaine Road, SW11

An exceptional, fully extended ground floor garden flat presented in immaculate order throughout. Comprising a large open plan reception/kitchen and dining room, two double bedrooms, family bathroom and private garden. The property also benefits from a large cellar for ample storage and has a share of the freehold.

At the front, a bay-fronted principal bedroom offers a bright and generous retreat, complemented by a second double bedroom opening onto a private patio. The real standout is the fully extended kitchen/dining and living space at the rear. Flooded with natural light, it features bifold doors that open directly onto the private garden, creating a seamless inside-outside flow perfect for entertaining, relaxing, or family life. A useful cellar provides additional storage, ensuring practicality matches the lifestyle appeal.

Strathblaine Road is ideally situated for all the popular amenities located on Northcote Road, Battersea Rise, St. John's Road & St. John's Hill. The green open spaces of both Wandsworth and Clapham Commons are close by. Clapham Junction station is literally around the corner and couldn't be easier for commuters.

Features

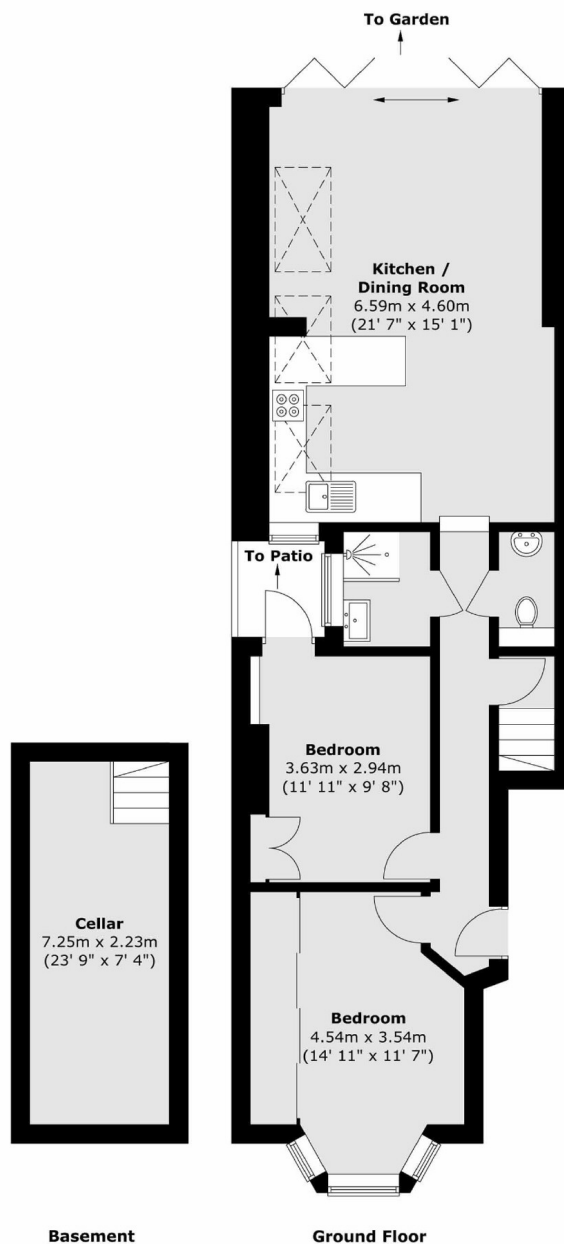
- Fully Extended Garden Flat
- Open Plan Reception/Kitchen
- Two Double Bedrooms
- Family Bathroom
- Private Garden
- Share Of Freehold







Strathblaine Road, London, SW11



Total area (approx.) : 84 sq. m (904 sq. ft)
Total patio area (approx.) : 2.3 sq. m (25 sq. ft)
(Including Basement)

Dexters

Northcote Road
93 St. John's Road
London
SW11 1QY
Sales
020 7483 6333

Energy Rating: C. We aim to make our particulars both accurate and reliable. However they are not guaranteed; nor do they form part of an offer or contract. If you require clarification on any points then please contact us, especially if you're traveling some distance to view. Please note that appliances and heating systems have not been tested and therefore no warranties can be given as to their good working order.

 **RICS** | Regulated
Estate Agent
and Letting Agent

[dexters.co.uk](https://www.dexters.co.uk)