



**Price**  
**£365,000**

**Freehold**

2x  1x  1x 

**The Pasture, Pound Hill,  
Crawley, West Sussex,  
RH10**

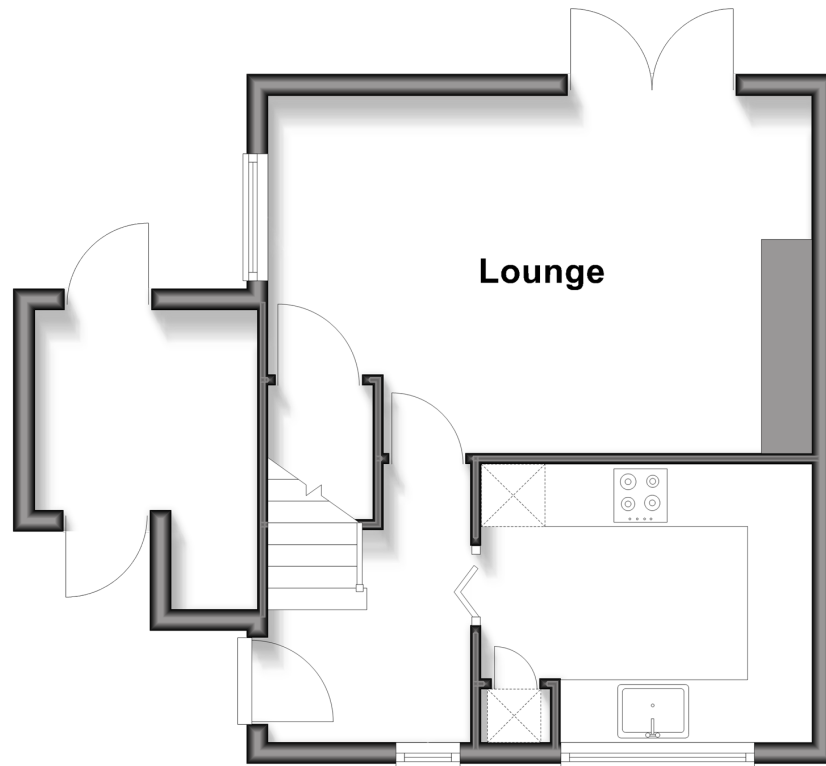
**OVER 60?**

Secure this property  
for up to **59% less!**

**cubitt & west**  
Helping you move forwards

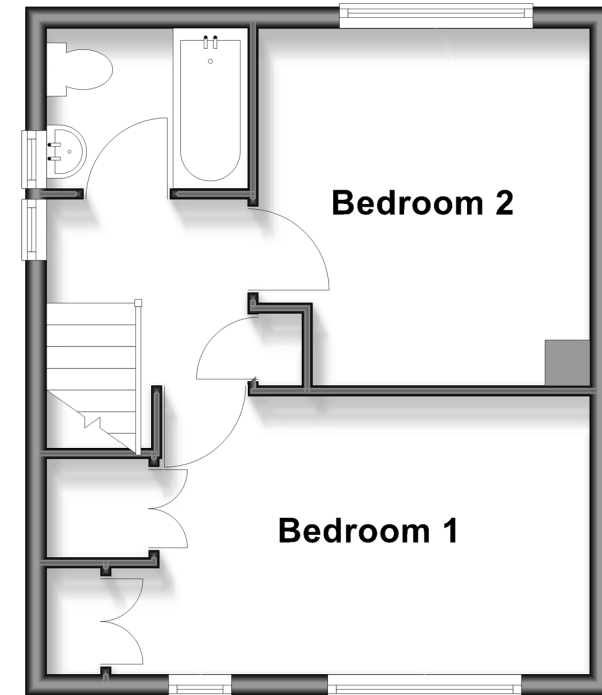
## Ground Floor

Approx. 35.8 sq. metres (385.6 sq. feet)



## First Floor

Approx. 30.9 sq. metres (332.4 sq. feet)



## Accommodation

### GROUND FLOOR

Entrance Hall

Lounge: 16'7 x 11'1 (5.06m x 3.38m)

Kitchen : 10'1 x 8'6 (3.08m x 2.59m)

### FIRST FLOOR

Landing

Bedroom 1: 13'2 x 8'9 (4.02m x 2.67m)

Bedroom 2: 11'7 x 10'3 (3.53m x 3.13m)

Bathroom

### OUTSIDE

Front Garden

Cabin

Rear Garden



## Main features

- Good size semi detached house in Three Bridges
- Potential for driveway subject to permission
- Re fitted kitchen
- Larger than average garden with cabin which is currently used as a gym
- Great location giving easy access to local school and Three Bridges mainline

### Nearest Schools

Primary Schools: Pound Hill Junior School, Crawley 0.2 miles, Maidenbower Junior School 0.5 miles, St Andrew's CofE Primary 0.7 miles

Secondary Schools: Oriel High School 0.6 miles

### Transport Information

Train Stations: Three Bridges 0.3 miles, Crawley 1.3 miles, Ifield 2.5 miles

### Address

The Pasture, Pound Hill, Crawley, West Sussex, RH10

### Directions

For directions to this property please contact us.



**cubitt&west**  
Helping you move forwards

Call Crawley Branch 01293 522233 ■ [cubittandwest.co.uk](http://cubittandwest.co.uk)



■ Through a Homewise Home For Life Plan people aged 60+ can secure this property for up to 59% less, by purchasing a Lifetime Lease



20420770/20260401/SS/NH1