



## Percy Road, TW12

### £530,000

This is a large three bedroom, split level maisonette that comes with a modern kitchen, two bathrooms and allocated parking. Further benefits include tons of light through large windows and no onward chain.

Percy Road is centrally located within Hampton village, moments from the train station, local shops and cafés, Bushy Park, Hampton Court Palace and the Thames. There is also a great choice of outstanding state and private schools close by.

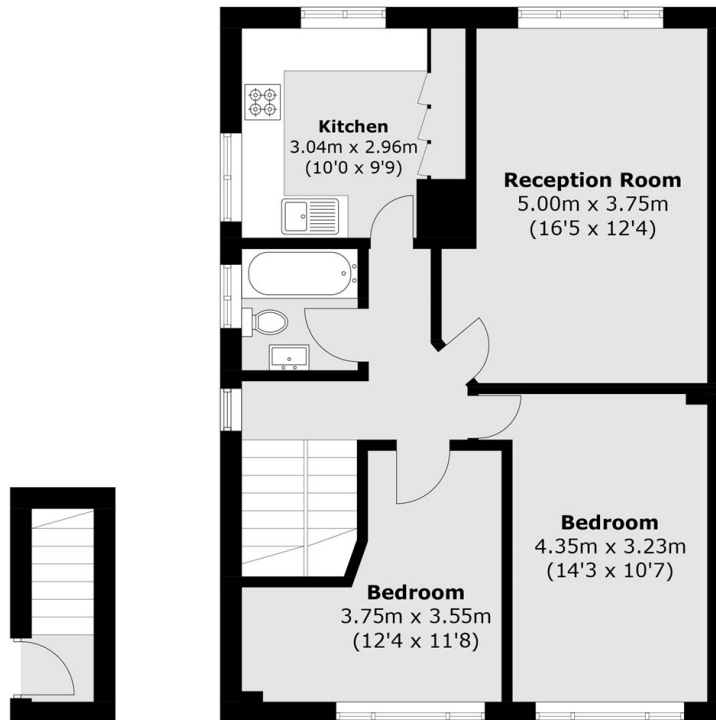
### Features

- Three Bedrooms
- Split Level
- Maisonette
- Allocated Parking
- Off Street Parking
- Communal Gardens

# Percy Road, Hampton, TW12



## Second Floor



## Ground Floor

## First Floor

Total area (approx.): 105.3 sq. m (1,133.3 sq. ft)