



Heol Senni

Guide Price £370,000 to £380,000

- Beautifully Presented Four-Bedroom Detached Home
- Superb Open-Plan Kitchen/Dining/Living Area
- EV Charging Point
- Detached Garage
- Fitted Sonos Sound System
- EPC Rating: C



 4  2  2

Pinkmove

01633 746088
team@pinkmove.co.uk



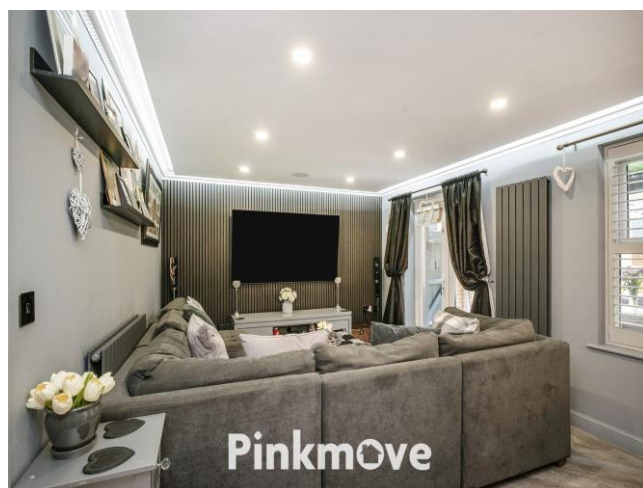
About the property

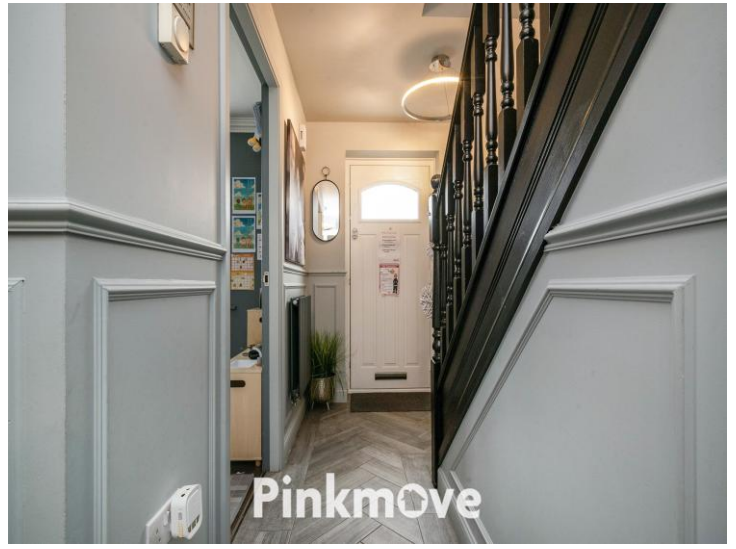
Situated within a quiet modern development in a highly convenient and sought after location is this beautifully presented four-bedroom detached family home. The property is ideally positioned close to local amenities, well regarded schools, bus routes, and the Monmouthshire & Brecon Canal, while also offering easy access to Junctions 25A and 26 of the M4 and Newport City Centre-making it an excellent choice for commuters.

The well-appointed accommodation comprises, on the ground floor: a welcoming entrance hallway, spacious living room, cloakroom, utility room, window shutters throughout and a superb contemporary open plan kitchen/dining/living space with a fitted Sonos sound system. The kitchen has been thoughtfully redesigned by removing the original internal wall to create a bright, generous, and versatile open plan area with direct access to the enclosed rear garden.

To the first floor are four bedrooms, including three doubles, with the master bedroom benefiting from a modern en suite shower room, along with a stylish family bathroom.

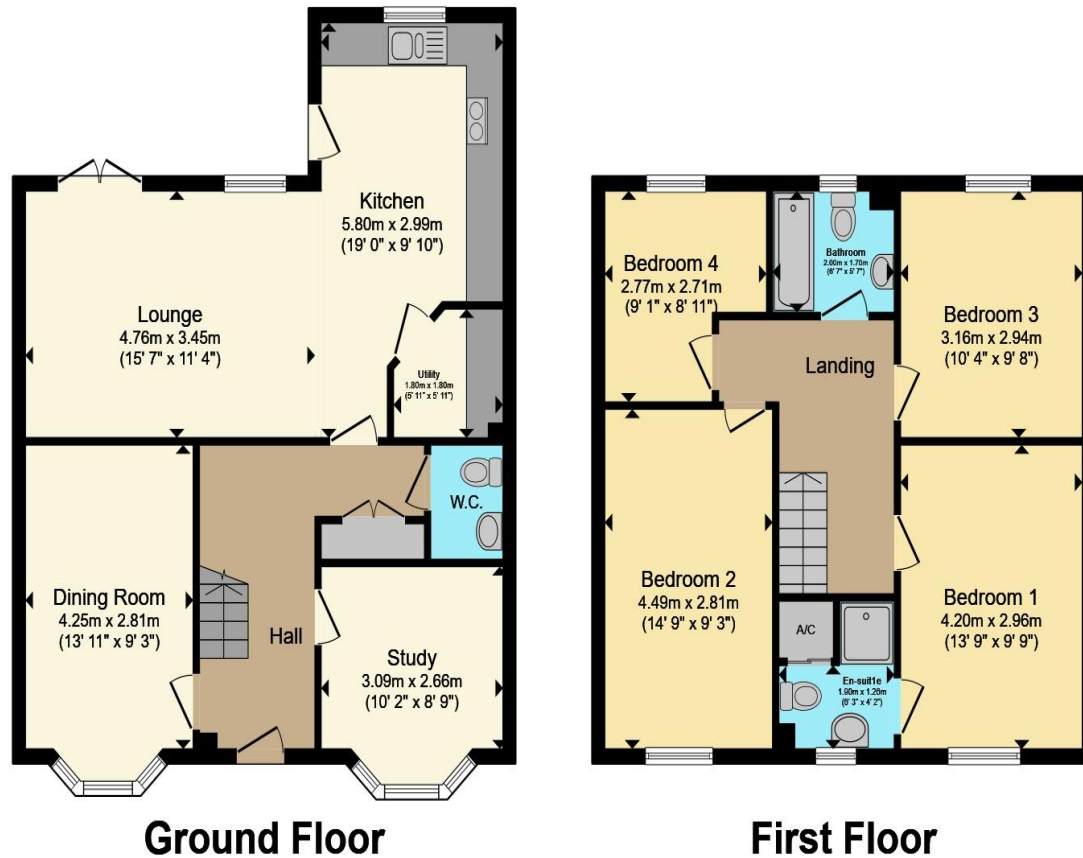
Outside, the property features a pathway to the front entrance, driveway and parking for two cars to the side, an electric car charging point, and a detached garage equipped with power and lighting. The rear garden offers a private, low maintenance space with composite decking and artificial lawn, backing onto peaceful woodland.





Accommodation

Floorplan



Total floor area 130.8 sq.m. (1,408 sq.ft.) approx

This floor plan is for illustrative purposes only. It is not drawn to scale. Any measurements, floor areas (including any total floor area), openings and orientation are approximate. No details are guaranteed, they cannot be relied upon for any purpose and they do not form part of any agreement. No liability is taken for any error, omission or misstatement. A party must rely upon its own inspection(s). Powered by www.focalagent.com

Important Information

Note while we endeavour to make our sales details accurate and reliable, if there is any point which is of particular interest to you, please contact the office and we will be pleased to confirm the position for you. We have not personally tested any apparatus, equipment, fixtures, fittings or services and cannot verify they are in working order or fit for their purposes. Nothing in these particulars is intended to indicate that carpets or curtains, furnishings or fittings, electrical goods (whether wired or not). Gas fires or light fittings or any other fixtures not expressly included form part of the property offered for sale. This computer generated Floorplan, if applicable, is intended as a general guide to the layout and design of the property. It is not to scale and should not be relied upon for dimensions. Tenure: We cannot confirm the tenure of the property as we have not had access to the legal documents. The buyer is advised to obtain verification from their solicitor or surveyor.

Peter Alan Limited is registered in England and Wales under company number 2073153. Registered Office is Cumbria House, 16-20 Hockliffe Street, Leighton Buzzard, Bedfordshire, LU7 1GN. VAT Registration Number is 500 2481 05. For activities relating to regulated mortgages and non-investment insurance contracts, Peter Alan Limited is an appointed representative of Connells Limited which is authorised and regulated by the Financial Conduct Authority. Connells Limited's Financial Services Register number is 302221. Most buy-to-let