



St. Davids Square, E14

£850 Per week

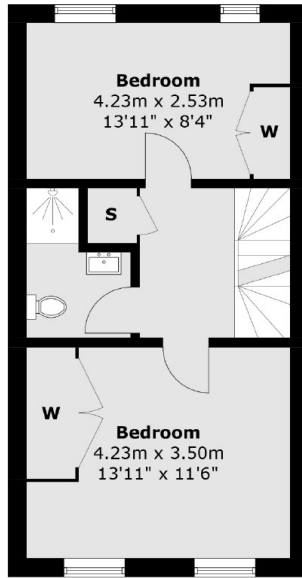
A well presented four bedroom house set within this riverside development. Arranged over four floors, this house has a separate kitchen, two private balconies and access to a residents gym and concierge.

St David's Square is a gated riverside development moments from Mudchute Park and the popular Kinkao Thai Restaurant.

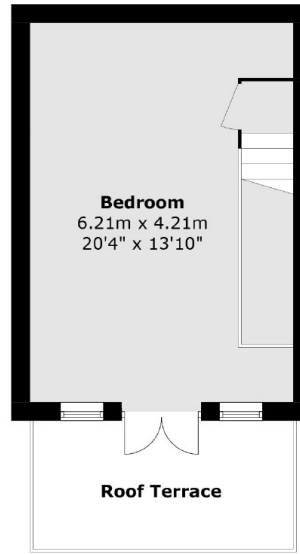
Features

- Four Bedrooms
- Two Bedrooms
- Townhouse
- Residents Leisure Facilities
- Concierge
- Off Street Parking

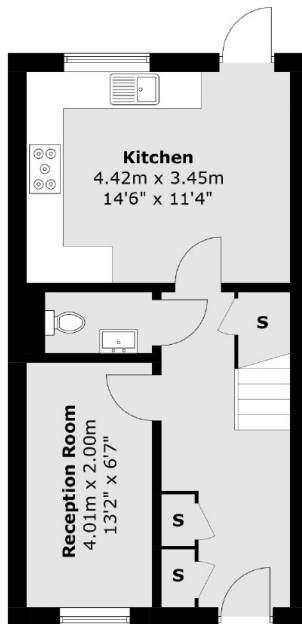
St. Davids Square, London, E14



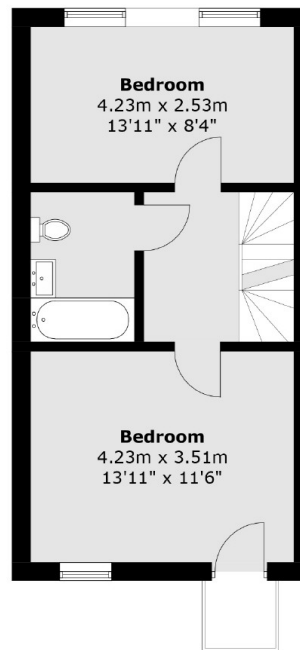
Second Floor



Third Floor



Ground Floor



First Floor

Total area (approx.): 140.1 sq. m (1,507.8 sq. ft)
External Area / Roof Terrace : 10.2 sq. m (109.7 sq. ft)