



Price
£425,000

Freehold

3x  1x  1x 

**Lewis Road, Istead Rise,
Kent, DA13**

OVER 60?

Secure this property
for up to **59% less!**

Wards
Helping you move forwards



Main features

- Conveniently positioned close to amenities and everyday essentials
- Walking distance to well regarded schools, ideal for families
- Off road parking and garage providing secure storage
- Low maintenance rear garden
- Good size lounge/diner offering flexible, comfortable living space

Accommodation

GROUND FLOOR

- Porch: 6'7 x 5'5 (2.01m x 1.65m)
- Hallway: 12'5 x 5'6 (3.79m x 1.68m)
- Lounge/Diner: 26'6 x 8'10 (8.08m x 2.69m)
- Kitchen: 11'6 x 7'7 (3.51m x 2.31m)
- Conservatory: 8'0 x 7'8 (2.44m x 2.34m)

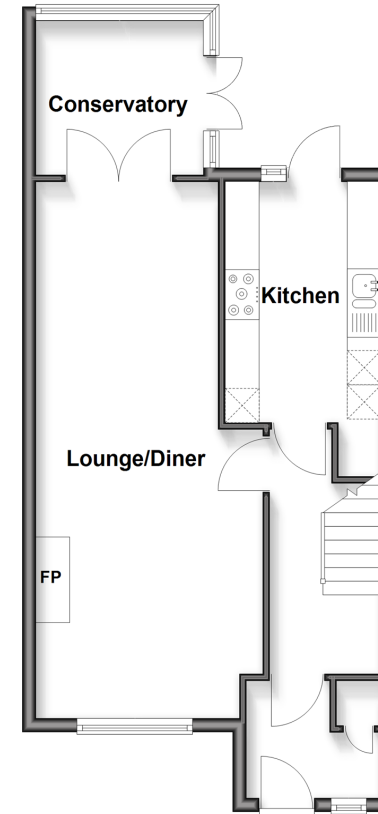
FIRST FLOOR

- Landing
- Bedroom 1: 13'6 x 9'6 (4.12m x 2.90m)
- Bedroom 2: 11'11 x 9'6 (3.63m x 2.90m)
- Bedroom 3: 9'11 x 7'0 (3.02m x 2.14m)
- Bathroom: 7'5 x 5'9 (2.26m x 1.75m)

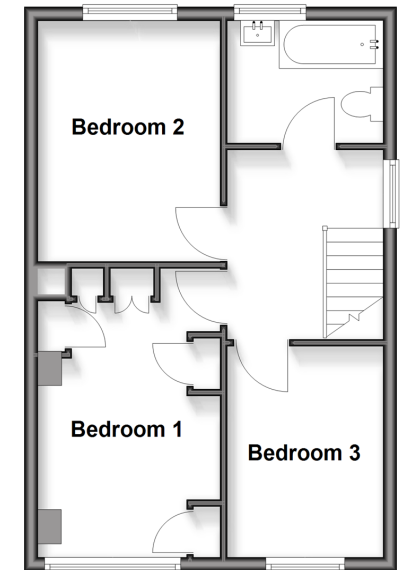
OUTSIDE

- Front Private Parking Area
- Shared Drive to Side
- Garage to Rear: 17'0 x 8'2 (5.19m x 2.49m)
- Rear Garden

Ground Floor
Approx. 47.8 sq. metres (514.5 sq. feet)



First Floor
Approx. 40.4 sq. metres (434.4 sq. feet)



Call Meopham - 01474 813100 ■ wardsokent.co.uk

- If buying to rent, please check if Local Authority licensing schemes apply before proceeding
- Through a Homewise Home For Life Plan people aged 60+ can secure this property for up to 59% less, by purchasing a Lifetime Lease



901420BY/20260617/SB/JJ