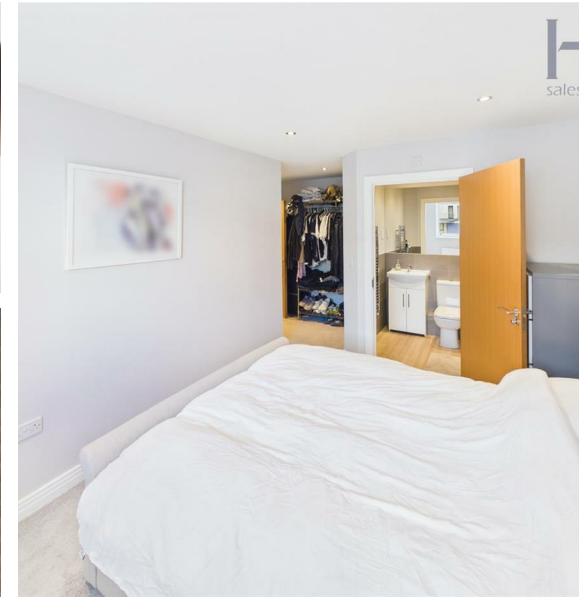


Swingate, Stevenage, SG1 1AX

£1,550 Per Month



Two Bedroom modern apartment located in the heart of Stevenage town centre, offering contemporary open-plan living with a sleek fitted kitchen and spacious lounge area. The property features a generous master bedroom with en-suite, a second double bedroom, and a modern family bathroom. Further benefits include allocated parking and excellent transport links, with the train station just a short walk away—ideal for commuters.



86 High Street
Stevenage
Hertfordshire
SG1 3DW
01438 728444

stevenage@homesandmortgages.co.uk

Energy Efficiency Rating

	Current	Potential
Very energy efficient - lower running costs		
(92 plus) A		
(81-91) B		
(69-80) C	73	74
(55-68) D		
(39-54) E		
(21-38) F		
(1-20) G		
Not energy efficient - higher running costs		
England & Wales	EU Directive 2002/91/EC 