



Price
£750,000

Freehold

4x  2x  2x 

**Mitchley Avenue, Purley,
Surrey, CR8**

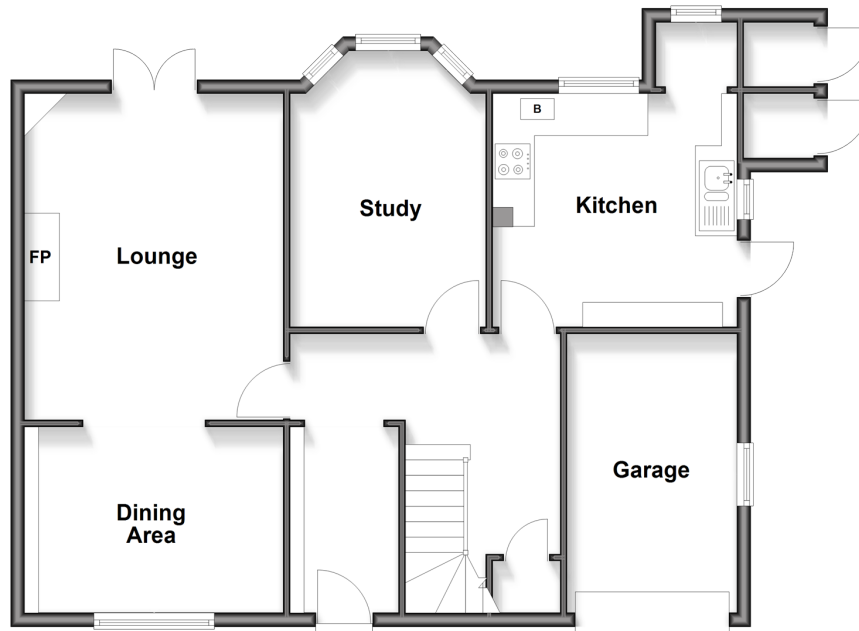
OVER 60?

Secure this property
for up to **59% less!**

cubitt&west
Helping you move forwards

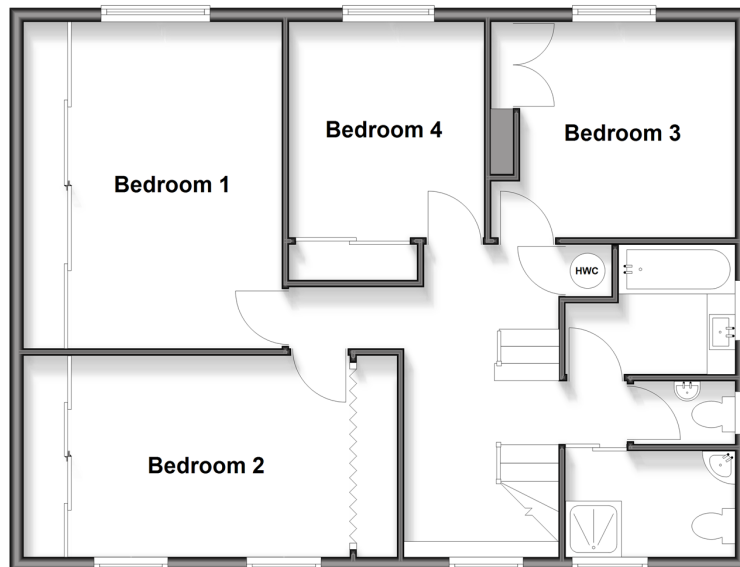
Ground Floor

Approx. 79.8 sq. metres (858.9 sq. feet)



First Floor

Approx. 77.6 sq. metres (835.6 sq. feet)



Accommodation

GROUND FLOOR

Entrance Hall

Lounge: 15'1 x 11'4 (4.60m x 3.46m)

Dining Area: 14'7 x 9'1 (4.45m x 2.77m)

Study: 12'2 x 8'7 (3.71m x 2.62m)

Kitchen: 11'2 x 10'5 (3.41m x 3.18m)

FIRST FLOOR

Landing

Bedroom 1: 15'6 x 8'8 (4.73m x 2.64m)

Bedroom 2: 15'5 x 9'2 up to fitted wardrobes (4.70m x 2.80m)

Bedroom 3: 10'5 x 10'2 (3.18m x 3.10m)

Bedroom 4: 10'2 x 9'2 (3.10m x 2.80m)

Shower Room

Bathroom

Separate Toilet

OUTSIDE

Driveway

Garage

Front Garden

Rear Garden



Main features

- Chain free large detached house in popular Riddlesdown area
- Great size bedrooms with family bathroom & separate shower room
- Garage and driveway for several cars, beautiful views from rear garden
- Walking distance to 3 train stations - ideal if you commute
- Catchment area for Riddlesdown Collegiate



Nearest Schools

Primary Schools: Harris Primary 0.3 miles, Beaumont Primary 0.9 miles, Christ Church CofE Primary (Purley) 0.9 miles
Secondary Schools: Riddlesdown Collegiate 0.6 miles, Thomas More Catholic School 1.2 miles, Tudor Lodge School 1.5 miles



Transport Information

Train Stations: Riddlesdown 0.1 miles, Kenley 0.4 miles, Purley 0.7 miles



Address

Mitchley Avenue, Purley, Surrey, CR8



Directions

For directions to this property please contact us.



cubitt&west
Helping you move forwards

Call Purley Branch 020 8660 8882 ■ cubittandwest.co.uk



■ If buying to let, the energy rating will need to be improved to at least 'E' rating before you can let the property
■ Appliances & services are untested, dimensions are approximate and floor plans are not to scale

■ Legal advice should be taken to verify fixtures/fittings, planning, alterations and/or lease details
■ Through a Homewise Home For Life Plan people aged 60+ can secure this property for up to 59% less, by purchasing a Lifetime Lease

21511865/20260124/DI/KV