



Telfords Yard, E1W

£2,250,000

 3  1  2  B

- Renovated Throughout
- Allocated Parking
- Chain Free

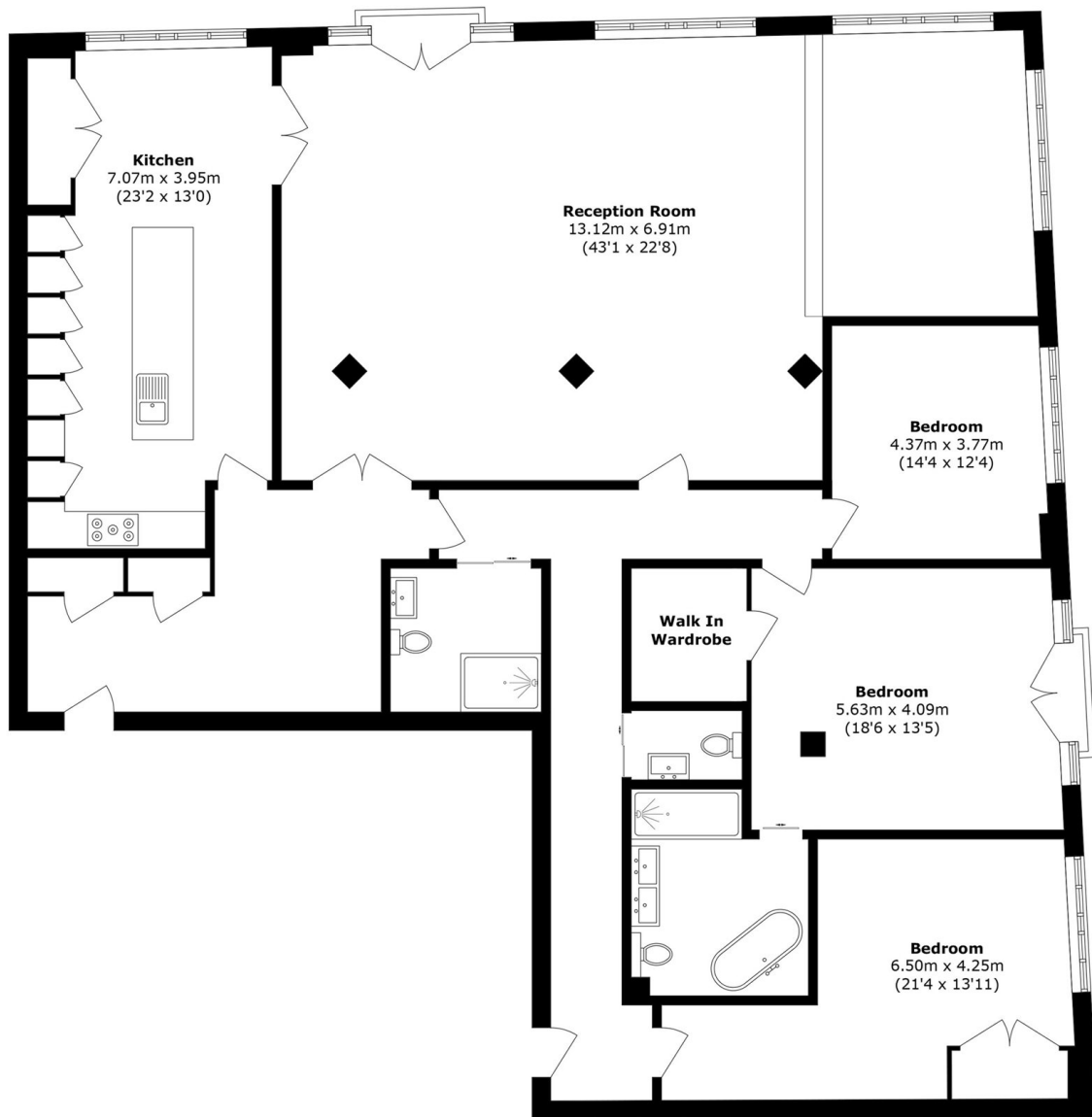
- Warehouse Conversion
- Gated Development
- Concierge



Nestled within the highly sought-after Warehouse gated conversion, Telfords Yard, is this exceptional three bedroom home offering over 2,566 square feet. The home has been renovated throughout to a high standard, has an allocated parking space, concierge service and offered on a chain free basis. Originally built in the early 1800s Telfords Yard is a beautiful converted Victorian era Warehouse that used to house wool. Original features include high ceilings, exposed brick walls and warehouse doors. The property is perfect for entertaining guests and cosy nights in.

The warehouse is ideally located close to St Katharine's Docks with a wide selection of pubs, bars, restaurants and cafes nearby. Only a short walk from Tower Hill stations, DLR links, Wapping Overground Station, and buses right around the corner for an easy access to the City, London Bridge, Canary Wharf or Shoreditch.





Total area (approx.): 238.4 sq. m (2566.1 sq. ft)

35A Wapping High Street,
 London, E1W 1NR
 020 7665 5589
 ea2group.com



Energy Rating: B We aim to make our particulars both accurate and reliable. However they are not guaranteed; nor do they form part of an offer or contract. If you require clarification on any points then please contact us, especially if you're travelling some distance to view. Please note that appliances and heating systems have not been tested and therefore no warranties can be given as to their good working order.