



9 Boddington Road
Kettering, NN15 6DZ



Simpson & Partners

Located to the Southern side of Kettering is this delightful three bedroom terrace property that offers a perfect blend of comfort and convenience.

One of the standout features of this home is its expansive rear garden providing ample space for outdoor relaxation and entertainment. The garden also boasts pedestrian rear access, adding an extra layer of convenience.

The property's location is nothing short of exceptional. It is situated within walking distance of Kettering's renowned Wicksteed Park, a beloved local attraction that offers endless hours of fun and recreation for the entire family. Additionally, the bustling town centre and the Kettering Mainline station are conveniently located nearby, making commuting and exploring the surrounding areas a breeze.

benefitting from upvc double glazing throughout, ensuring optimal insulation and energy efficiency. The gas radiator heating system provides a cozy and comfortable atmosphere, perfect for those chilly evenings.

The heart of the home is undoubtedly the 14' fitted kitchen, which is equipped with all the storage space to make meal preparation a joyful experience. The sitting/dining room is a true gem, featuring French doors that lead directly onto the rear garden, creating a seamless transition between indoor and outdoor living.

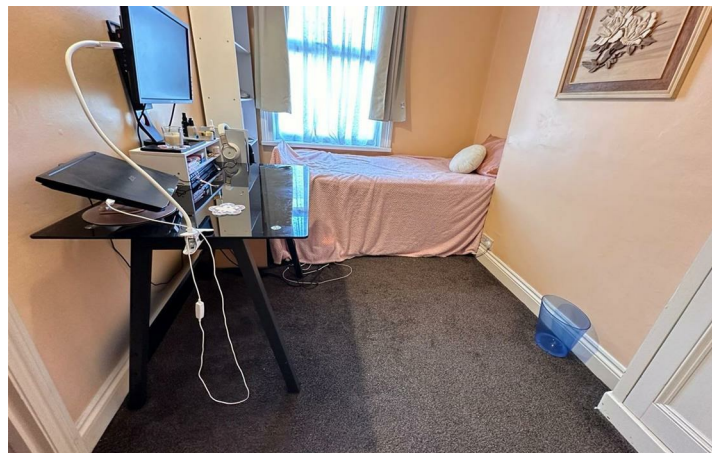
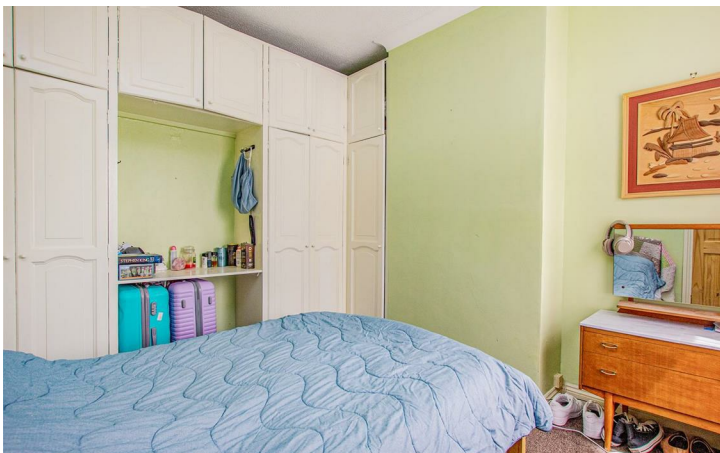
Ascend the stairs to the upper level, where you'll find three bedroom and a bathroom. Bedroom one is particularly noteworthy, boasting fitted wardrobes that offer both style and practicality. The white three-piece bathroom suite is a picture of elegance, complete with a 'P' shaped bath that comes with a shower over, providing the perfect space to unwind and rejuvenate after a long day.

To fully appreciate the charm and potential of this exceptional property, an internal viewing is highly recommended. Don't miss out on the opportunity to make this terrace home your own, as it is sure to captivate and delight all who step inside.

Council Tax :A
Energy Rating D/66

Price £189,995

 3  1  2



GROUND FLOOR

1ST FLOOR



Whilst every attempt has been made to ensure the accuracy of the floor plan contained here, measurements of doors, windows, rooms and any other items are approximate and its responsibility is taken for any error, omission, or misstatement. The plan is copyright to Simpson and Partners and is for illustrative purposes and should only be used in conjunction with any prospective purchase. The services, systems and appliances shown have not been tested and no guarantee as to their operability can be given.
Made with Metreplan 12/02



Energy Efficiency Rating

	Current	Potential
Very energy efficient - lower running costs		
(92 plus) A		
(81-91) B		85
(69-80) C		
(55-68) D	66	
(39-54) E		
(21-38) F		
(1-20) G		
Not energy efficient - higher running costs		
England & Wales	EU Directive 2002/91/EC	



When you buy with Simpson and Partners, you know **you'll be in safe hands**. From the moment you walk through our doors, we'll make you **feel truly welcome**. Our sales consultants and financial advisors will take you through **every step of the process**, offering **free expert advice** along the way, from help choosing the right mortgage and insurance through to finding your conveyancer. And if you need help selling your home too, **with over 20 years of local experience, you can trust us to get you moving**.



**Simpson
& Partners**

Making Every
Journey Personal



01536 518200

kettering@simpsonandpartners.co.uk

<https://www.simpsonandpartners.co.uk/>

1 Silver Street, Kettering, Northants, NN16 0BN