



High Corrie, Letton Close, Blandford Forum, Dorset, DT11 7SS





**A rare opportunity to purchase this impressive and versatile family home currently used as a one-bedroom ground floor apartment, with a 3-bedroom secondary apartment occupying the first and second floor. This property would suit a family looking for SEPARATE and MULTIGENERATIONAL living all under**

A rare opportunity to purchase this impressive and versatile family home boasting a charming outlook towards the surrounding countryside and offering great flexibility for multi generational living. This property lends itself to buyers that are seeking an adaptable family home, by use of a one bedroom ground floor apartment, with a 3-bedroom secondary apartment occupying the first and second floor, or simply a spacious 'all in one' residence. This property must be viewed in order to be fully appreciated.

High Corrie was constructed in 1965 and then further extended in 1972, the house offers flexible accommodation having been greatly improved by the current owners.

It is unique in offering outstanding views and the flexibility to be a two-family residence with the square footage on offer.

The ground floor accommodation can be used in a multitude of ways, with it comprising a spacious fully fitted modern purpose made kitchen with worktops and integrated appliances and an adjoining family room with a wood burning stove. Good sized living room, garden room & a double bedroom with ensuite shower room/utility which also has access from the hall.

A solid Ash staircase leads to the first floor which can also be accessed by an external staircase from a side gate, the rear side rooms enjoy stunning countryside views.

A second kitchen with modern, purpose made furniture and integrated appliances, large living room/potential bedroom, 2 double bedrooms with built in wardrobes and an adjoining study, finally a good sized bathroom with spa and separate shower.

The second floor is a light filled master bedroom suite, with panoramic views from the array of Velux windows to the front and rear of the property. There is a large sitting area combined with the bedroom, and an en suite bathroom with separate shower enclosure. Adjoining the bedroom is a dressing room with a utility cupboard for washing machine and tumble drier.

The house is approached by a private road - Letton Close off of the A354. A 5-bar gate leads into a brick paved drive with ample parking and a turning space in front of the double garage. This area would comfortably house a caravan or motorhome.

The gardens are surrounded by dense hedging offering complete privacy from the neighbouring properties.

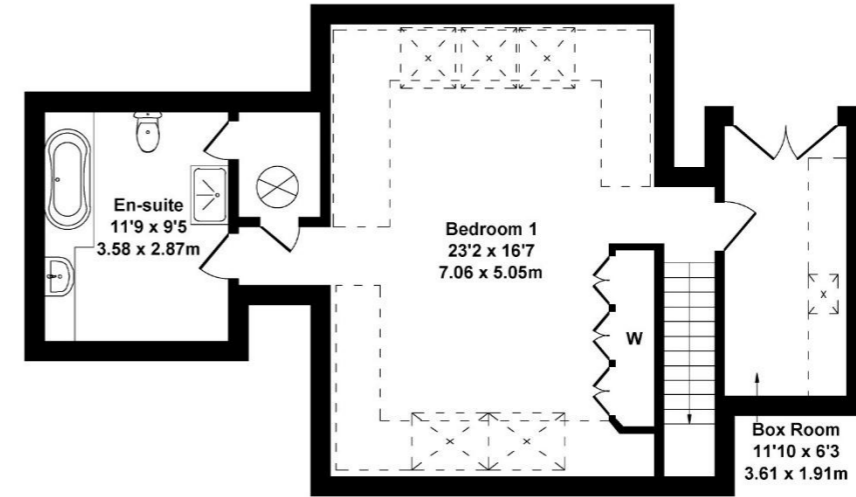
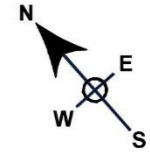
The front garden is home to well established trees and plants, 2 ponds linked by waterfalls and a stream. Various seating areas, specimen trees and beds filled with flowers.

The rear garden has breath-taking views over Pimperne and out towards Win Green and the top of Spread Eagle Hill.

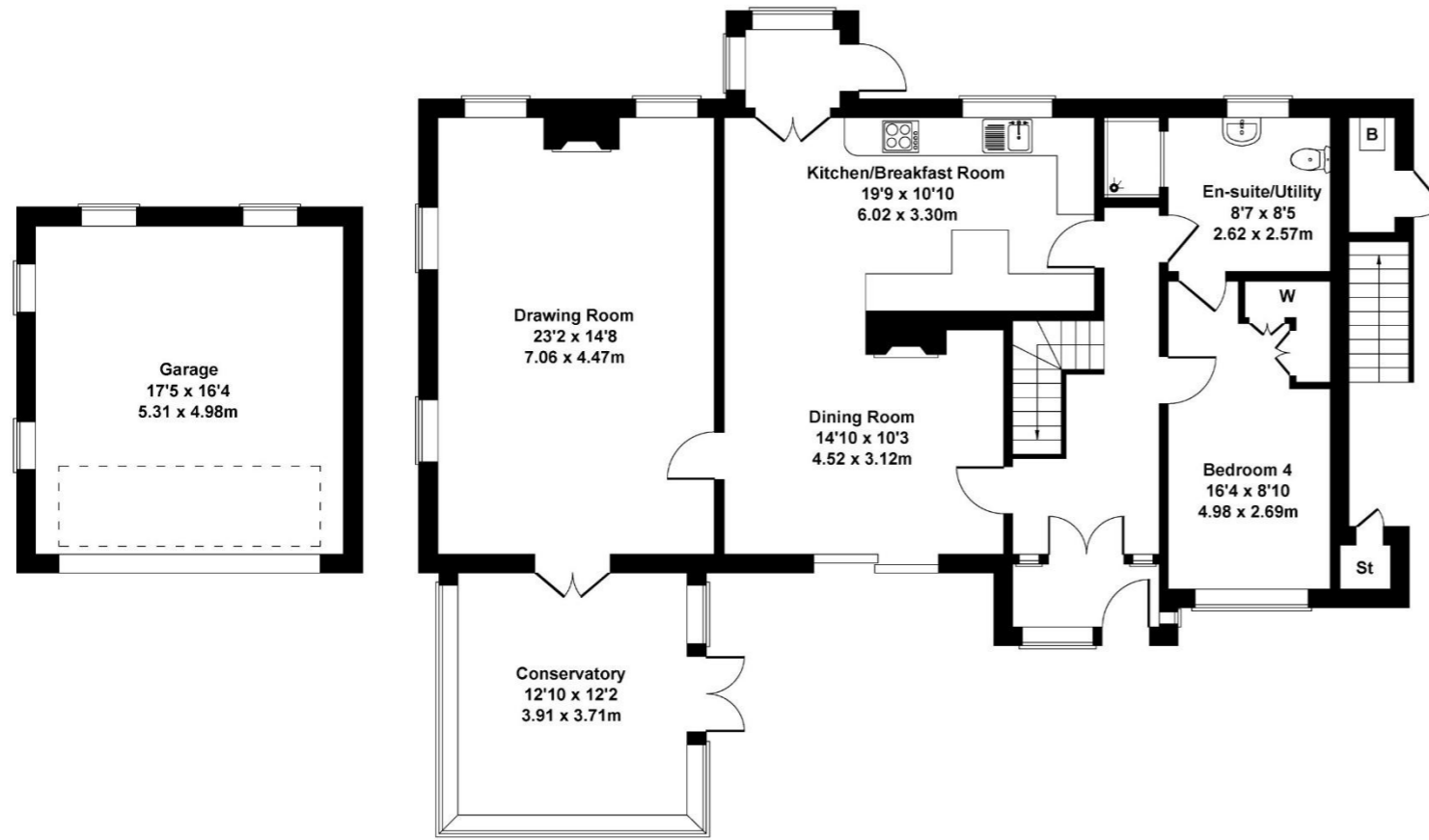
£800,000 Freehold

# High Corrie

Approximate Gross Internal Area  
3460 sq ft - 321 sq m

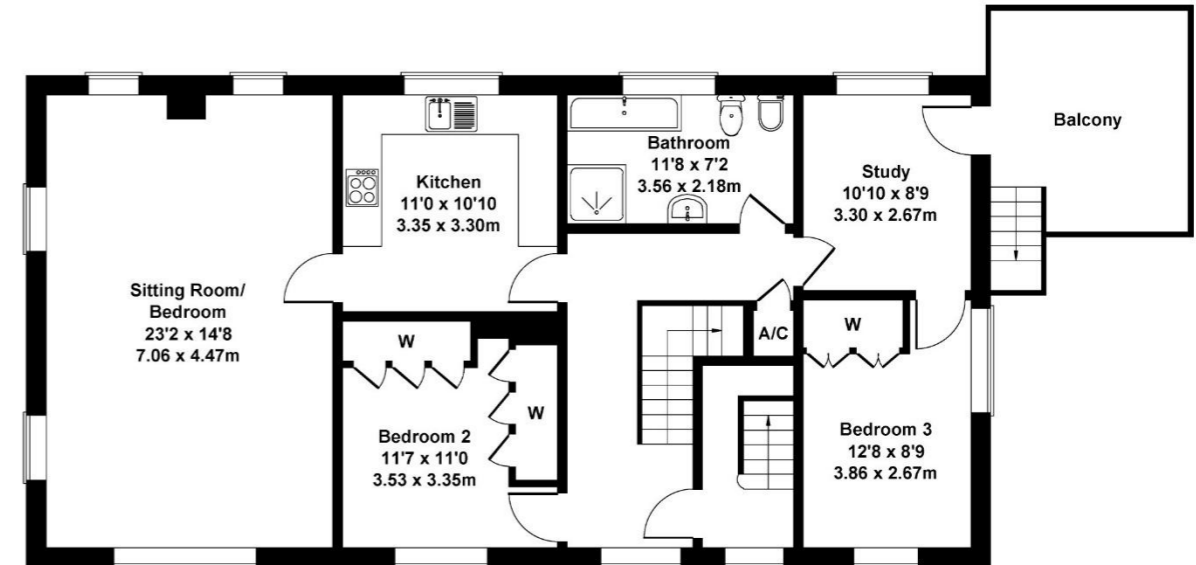


SECOND FLOOR



GARAGE

GROUND FLOOR



FIRST FLOOR

Not to Scale. Produced by The Plan Portal 2024  
For Illustrative Purposes Only.

Please note Forum Sales & Lettings and their client give notice that:

1. They have no authority to make or give any representation or warranties in relations to the property. These particulars do not form part of any offer or contract and must not be relied upon as statements or representations of fact.

2. Any areas, common measurements or distances are approximate. The text, photographs and plans are for guidance only and are not necessarily comprehensive. It should not be assumed that the property has all necessary Planning, Building Regulations or other consents and Forum Sales and Lettings have not tested any services, equipment or facilities. Purchasers must satisfy themselves by inspection or otherwise.

EPC Rating - C

Viewing Arrangements - Strictly by appointment with Forum Sales & Lettings

15 Salisbury Street, Blandford Forum, Dorset, DT11 7AU

Tel: 01258 459600

