



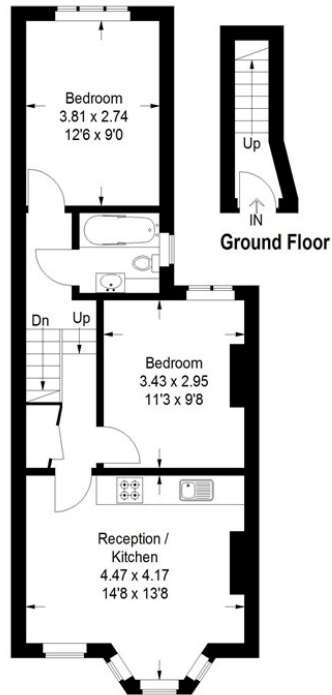
PCM

£2,000 PCM
Dayton Grove
London, SE15 2NX

GARETH
JAMES

Dayton Grove, SE15

Approximate Gross Internal Area
 Ground Floor = 2.6 sq m / 28 sq ft
 First Floor = 48.7 sq m / 524 sq ft
 Total = 51.3 sq m / 552 sq ft



First Floor

This plan is for layout guidance only. Not drawn to scale unless stated. Windows and door openings are approximate. Whilst every care is taken in the preparation of this plan, please check all dimensions, shapes and compass bearings before making any decisions reliant upon them. (ID404922)



Energy Efficiency Rating		Current	Potential
Very energy efficient - lower running costs			
(92 plus)	A		
(81-91)	B		
(69-80)	C		
(55-68)	D		
(39-54)	E		
(21-38)	F		
(1-20)	G		
Not energy efficient - higher running costs			
England & Wales		EU Directive 2002/91/EC	

Agents Note: Whilst every care has been taken to prepare these particulars, they are for guidance purposes only. All measurements are approximate and are for general guidance purposes only and whilst every care has been taken to ensure their accuracy, they should not be relied upon and potential buyers/tenants are advised to recheck the measurements

GARETH JAMES

OFFICE ADDRESS
 129 Bellenden Road
 London
 SE15 4QY

OFFICE DETAILS
 02077324330
 lettings@garethjames.com
<https://www.garethjames.com/>